



United States Capitol Visitor Center Weekly Construction Summary



Prepared by the Capitol Visitor Center Project Office, Architect of the Capitol

January 3, 2005

East Front Plaza Ready to Support Inaugural



This aerial view of the East Front Plaza taken December 22, 2004, shows most of the 160,000 granite paving stones that are now in place on the Plaza deck. Also visible are the grass beds and new skylights near the face of the Capitol. Clean-up activities will occur throughout the Plaza over the next two weeks to prepare the area for the arrival of the presidential motorcade and to accommodate other ceremonial activities. Below the Plaza deck, all major structural work is substantially complete with only minor concrete placements and waterproofing activities left to occur.

This Week – Ongoing Work – 1/03/05 through 1/07/05

CVC and East Front Plaza Highlights:

- East Front Plaza work is now complete at a level sufficient to support inaugural activities, including motorcade access.
- All major structural work for the CVC has been completed, including concrete placements for the roof deck and interior slabs. Work on the Library of Congress tunnel will be completed in late January 2005.
- Sequence 2 (build-out and finishes) workers are now fireproofing structural elements throughout the site.
- Stone masons have now placed more than 162,000 granite pavers on the CVC roof deck.
- Crews are installing storm water drain pipes in the eastern half of the site where the ground slopes to the CVC entrances and other workers have begun assembling the formwork for the pedestrian paths in this zone.
- Sequence 2 workers continue to install mechanical, electrical and plumbing systems and erect interior block work.

East Front Extension

- All major steel erection and demolition activities are complete inside the East Front. However, some minor pockets of demolition activity will still occur and cause temporary noise disturbances to adjacent offices. Sequence 2 contractors will continue installing mechanical systems and utilities in this zone.



A view of the south staircase leading into the Great Hall. All major structural work is now complete.

Truck Tunnel Construction

- The truck tunnel is open to trucks delivering materials in support of the Sequence 2 contract.
- Crews have completed placing the asphalt necessary to restore Northwest Drive and the traffic lanes at the North Barricade Entrance. Striping and other finishing activities will occur over the next two weeks and will be completed prior to the inaugural on January 20, 2005.

Library of Congress (LOC) Tunnel

- Asphalt paving and restoration work continues along First Street near the tunnel zone. Both sides of First Street are now open to traffic. The sidewalk on the east side of First Street is expected to be fully restored before the end of this week.
- Concrete placements still need to be completed for the steps and ramp inside the tunnel at the eastern-most end.

Next Week – 1/10/04 – 1/14/05

CVC and East Front Plaza Work

- Workers will continue placing the granite paving stones on the CVC roof deck between the two large skylights and in other areas on the eastern half of the roof deck.
- Crews will continue to install utilities, build mechanical spaces, place concrete, erect blockwork, and backfill the zones near the CVC entrances.

East Front Extension

- Removal of temporary shoring and minor demolition activities will continue. All major steel erection and demolition activities have been completed.
- Installation of mechanical systems and utilities will continue.



Workers place a waterproofing membrane at the CVC entrance zone.

Truck Tunnel Construction

- Restoration of Northwest Drive and the Senate Plaza will continue, including the removal of fences, placement of pavers, striping, and the restoration of sidewalks and landscaped areas.

Library of Congress (LOC) Tunnel

Final concrete placements are expected to occur at the eastern-most end of the tunnel within the LOC grounds.

If you have any questions about the Capitol Visitor Center Project, please contact Tom Fontana, CVC project communications officer, at (202) 228-1310, or by e-mail at tfontana@aoc.gov. You can read this document and previous editions on the CVC web site at www.aoc.gov.



United States Capitol Visitor Center Weekly Construction Summary



Prepared by the Capitol Visitor Center Project Office, Architect of the Capitol

January 10, 2005



This aerial view taken December 22, 2004, shows the entire CVC project area. As the aerial photo in last week's summary showed, the western half of the Plaza deck (nearest the Capitol building) has been completed to a level sufficient to support inaugural activities. Clean-up activities will occur through next Wednesday, Jan. 19, to prepare the site for the arrival of the presidential motorcade, a troop review and other ceremonial activities. Meanwhile, interior spaces have been turned over to the Sequence 2 contractor, who is now applying a fireproofing material on all steel throughout the structure and continues to install mechanical, electrical and plumbing systems in all areas of the facility.

This Week – Ongoing Work – 1/10/05 through 1/14/05

CVC and East Front Plaza Highlights:

- East Front Plaza work is now complete at a level sufficient to support inaugural activities, including motorcade access.
- All major structural work for the CVC has been completed, including concrete placements for the roof deck and interior slabs. Work on the Library of Congress tunnel will be completed in late January 2005.
- Sequence 2 (build-out and finishes) workers continue to fireproof structural elements throughout the site.
- Stone masons have now placed more than 175,000 granite pavers on the CVC roof deck.
- Crews continue assembling the formwork for the pedestrian paths that slope down to the CVC entrance from First St..
- Sequence 2 workers continue to install mechanical, electrical and plumbing systems and erect interior block work.

East Front Extension

- All major steel erection and demolition activities are complete inside the East Front. However, some minor pockets of demolition activity will still occur and may cause temporary noise disturbances to adjacent offices. Sequence 2 contractors will continue installing mechanical systems and utilities in this zone.

Truck Tunnel Construction

- The truck tunnel is open to trucks delivering materials in support of the Sequence 2 contract.



CVC crews continue preparing the East Front Plaza for the Inauguration next week. Inset: Stone masons install pavers in the middle of the Plaza.

Library of Congress (LOC) Tunnel

- Paving and sidewalk restoration work is complete along First Street SE.
- Waterproofing, backfilling and other finishing work at the easternmost end of the tunnel will continue.

Next Week – 1/17/04 – 1/21/05

Construction note: All work on the project will cease at 1:00 P.M. on Wednesday, Jan. 19, for Inauguration security preparations. Work will resume Friday, Jan. 21.

CVC and East Front Plaza Work

- Workers will continue placing the granite paving stones on the CVC roof in the central and eastern portions of the site.
- Sequence 2 crews will continue to install utilities, build mechanical spaces, place concrete, erect blockwork, and backfill and grade the zones near the CVC entrances.
- Sequence 1 crews will continue demobilizing equipment and trailers from the House and Senate eggs including the cement mixing plant (*photo right*).

East Front Extension

- Some minor demolition activities may occur.
- Crews will continue to install mechanical systems and utilities and begin restoration of the existing East Front elevators.

Truck Tunnel Construction

- Clean-up and finishing work will continue along Northwest Drive in preparation for the Inauguration.

Library of Congress (LOC) Tunnel

- Final concrete placements are expected to occur at the easternmost end of the tunnel within the LOC grounds.



A crane continues to disassemble the concrete mixing plant on the south side of the CVC site. The on-site plant ensured the efficient delivery of concrete throughout the project area and kept approximately 30 cement trucks off the roads each day.

If you have any questions about the Capitol Visitor Center Project, please contact Tom Fontana, CVC project communications officer, at (202) 228-1310, or by e-mail at tfontana@aoc.gov. You can read this document and previous editions on the CVC web site at www.aoc.gov.

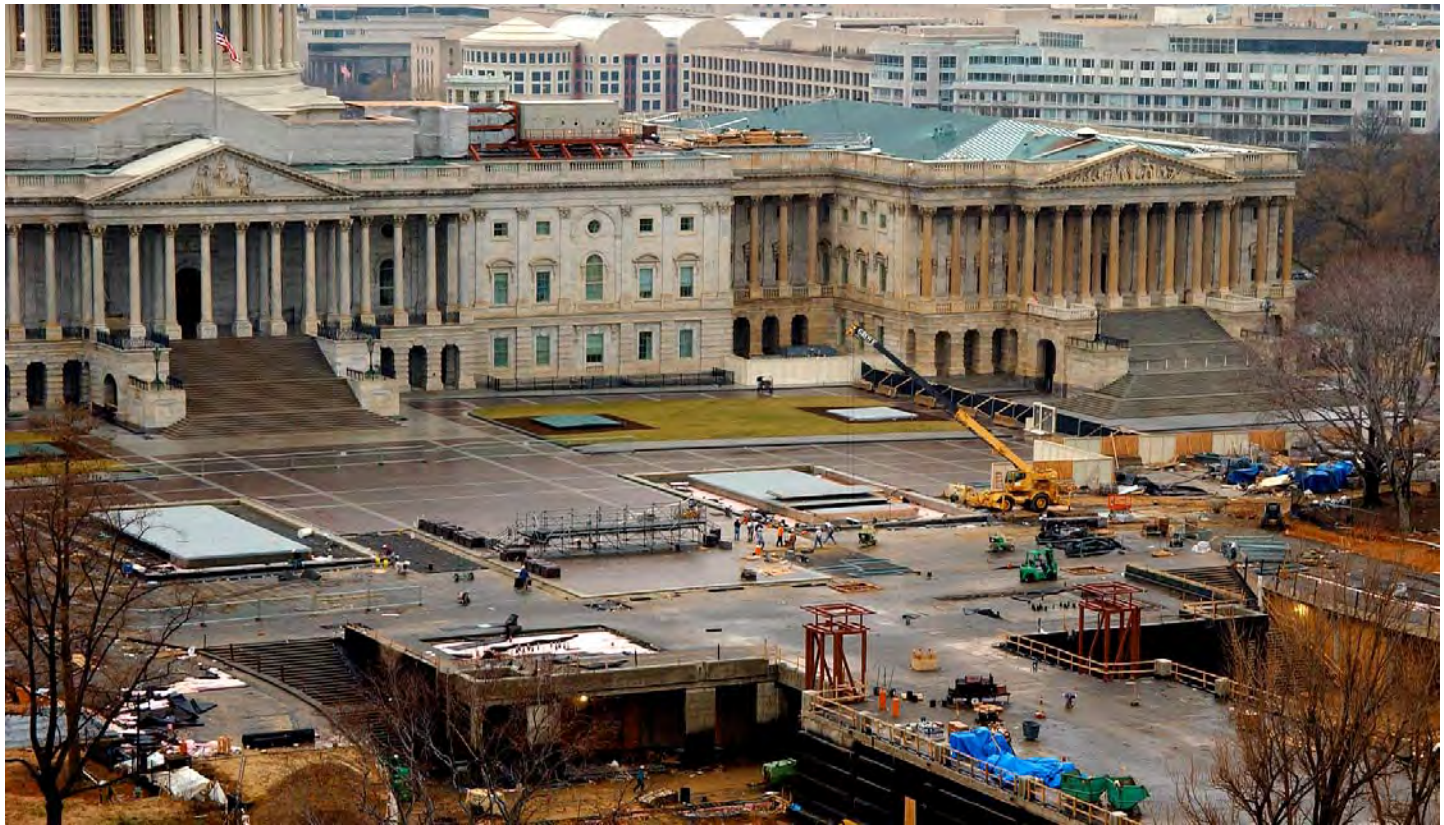


United States Capitol Visitor Center Weekly Construction Summary



Prepared by the Capitol Visitor Center Project Office, Architect of the Capitol

January 18, 2005



On a rainy day last Thursday, Jan. 13, this view of the East Front Plaza, as seen from the Library of Congress dome, shows laborers installing paving stones near the Great Hall skylights, which have been covered to help secure the Plaza for inaugural activities and to maintain above-freezing temperatures in the facility below. The scaffolding in the center of the Plaza will serve as a temporary media stand.

This Week – Ongoing Work – 1/17/05 through 1/21/05

CVC and East Front Plaza Highlights:

- East Front Plaza work is ready to support inaugural activities, including motorcade access and troop reviews.
- All work on the project will cease at 1:00 P.M. on Wednesday, Jan. 19, for security preparations. Work will resume Friday, Jan. 21.
- Sequence 2 (build-out and finishes) workers continue to fireproof structural elements throughout the site.
- Stone masons have now placed more than 178,000 granite pavers on the CVC roof deck.
- Crews continue assembling the formwork for the pedestrian paths that slope down to the CVC entrance from First St..
- Workers continue to install mechanical, electrical and plumbing systems and erect interior block work.

East Front Extension

- All major steel erection and demolition activities are complete inside the East Front. However, some minor pockets of demolition activity will still occur and may cause temporary noise disturbances to adjacent offices. Sequence 2 contractors will continue installing mechanical systems and utilities in this zone.

East Capitol Street Utility Tunnel

- Materials and equipment are being mobilized to East Capitol Street in preparation for the construction of the primary CVC utility tunnel. In order for this work to occur as expeditiously as possible and to minimize safety hazards, East Capitol Street, between First and Second Streets, will be closed to vehicular traffic beginning Saturday, January 22, 2005, through October 15, 2005.



A worker welds the joint of a utility line in the CVC service level. Work on the primary CVC utility tunnel begins this Saturday, Jan. 22.

- Pedestrian and wheelchair access will be maintained at all times along the south side of East Capitol Street. Access to the Metro bus stops on the north and south sides of East Capitol Street will be maintained until further notice.

Library of Congress (LOC) Tunnel

- Paving and sidewalk restoration work is complete along First Street SE.
- Final backfilling and other finishing work at the easternmost end of the tunnel will continue into next week.

Next Week – 1/24/04 – 1/28/05

CVC and East Front Plaza Work

- Workers will continue placing the granite paving stones on the CVC roof in the eastern half of the site.
- Sequence 2 crews will continue to install utilities, build mechanical spaces, place concrete, erect blockwork, and backfill and grade the zones near the CVC entrances.
- Sequence 1 crews will continue demobilizing equipment and trailers from the House and Senate eggs.

East Front Extension

- Some minor demolition activities may occur.
- Crews will continue to install mechanical systems and utilities.

East Capitol Street Utility Tunnel

- The street will be closed between First and Second Streets. Pedestrian and wheelchair access will be maintained.

Library of Congress (LOC) Tunnel

- Landscape restoration work is expected to occur above the easternmost end of the tunnel within the LOC grounds.



A worker installs air handling ductwork in the CVC.

If you have any questions about the Capitol Visitor Center Project, please contact Tom Fontana, CVC project communications officer, at (202) 228-1310, or by e-mail at tfontana@aoc.gov. You can read this document and previous editions on the CVC web site at www.aoc.gov.



United States Capitol Visitor Center Weekly Construction Summary



Prepared by the Capitol Visitor Center Project Office, Architect of the Capitol

January 24, 2005



Before leaving the Capitol following his inauguration, President George W. Bush stood on the East Front center steps to review the procession of troops as they marched across new granite paving stones that now cover the western half of the East Front Plaza. CVC contractors worked aggressively during the last several months to prepare the plaza for inaugural activities. The plaza has been closed again to accommodate CVC construction.

This Week – Ongoing Work – 1/24/05 through 1/28/05

CVC and East Front Plaza Highlights:

- The East Front Plaza has been secured again (following temporary access for the inauguration) to accommodate CVC activities, including skylight installation, material deliveries, and continuing work to install granite pavers.
- East Capitol Street, between First and Second Streets, was closed Saturday, Jan. 22, for utility work (see category below).
- Sequence 2 (build-out and finishes) workers continue to fireproof steel structural elements throughout the site.
- Crews continue assembling the formwork for the pedestrian paths that lead to the CVC entrance from First Street.
- Workers continue to install mechanical, electrical and plumbing systems and erect interior masonry block work.

East Front Extension

- All major steel erection and demolition activities are complete inside the East Front. However, some minor pockets of demolition activity will still occur and may cause temporary noise disturbances to adjacent offices. Sequence 2 contractors will continue installing mechanical systems and utilities in this zone.

East Capitol Street Utility Tunnel

- Materials and equipment continue to be mobilized to East Capitol Street in preparation for the construction of the primary CVC utility tunnel. In order for this work to occur as expeditiously as possible and to minimize safety hazards, East Capitol Street, between First and Second Streets, has been closed to vehicular traffic and will remain closed through October 15, 2005.
- Pedestrian and wheelchair access will be maintained at all times along the south side of East Capitol Street. Access to the Metro bus stops on the north and south sides of East Capitol Street will be maintained until further notice.



A view of the East Front Plaza as it appeared Wednesday, Jan. 19, 2005, the afternoon before the Presidential Inauguration. Crews worked diligently to remove tons of snow from both the East and West Fronts of the Capitol to clear the way for inaugural activities.

Library of Congress (LOC) Tunnel

- All concrete for the tunnel has been placed.
- Pending dry weather, final waterproofing and backfilling work will be completed at the easternmost end of the tunnel. Final grading and landscaping work to restore the zone will be completed over the next few weeks.

Next Week – 1/31/04 – 2/04/05

CVC and East Front Plaza Work

- Workers will continue placing the granite paving stones on the CVC roof in the eastern half of the site.
- Sequence 2 crews will continue to install utilities, build mechanical spaces, place concrete, erect blockwork, and backfill and grade the zones near the CVC entrances. Skylight installation may resume.
- Sequence 1 crews will continue demobilizing equipment and trailers from the House and Senate eggs.

East Front Extension

- Some minor demolition activities may occur related to “punchlist” items.
- Crews will continue to install mechanical systems and utilities.

East Capitol Street Utility Tunnel

- Crews will continue to stage materials and equipment along the street. Pedestrian and wheelchair access will be maintained along the south side of the street.

Library of Congress (LOC) Tunnel

- Landscape restoration work is expected to begin above the easternmost end of the tunnel within the LOC grounds.

If you have any questions about the Capitol Visitor Center Project, please contact Tom Fontana, CVC project communications officer, at (202) 228-1310, or by e-mail at tfontana@aac.gov. You can read this document and previous editions on the CVC web site at www.aac.gov.



United States Capitol Visitor Center Weekly Construction Summary



Prepared by the Capitol Visitor Center Project Office, Architect of the Capitol

January 31, 2005

This Week – Ongoing Work – 1/31/05 through 2/04/05

CVC and East Front Plaza Highlights:

- Sequence 2 workers continue to fireproof steel structural elements throughout the site.
- Crews continue assembling the formwork for trench drains along the pedestrian paths that lead to the CVC entrance from First Street.
- Workers continue to install mechanical, electrical and plumbing systems and erect interior masonry block work.
- Weather permitting, workers will resume installation of the granite paving stones on the East Front Plaza.

East Front Extension

- All major steel erection and demolition activities are complete inside the East Front. However, some minor pockets of demolition activity will still occur and may cause temporary noise disturbances to adjacent offices.
- Crews will continue installing mechanical systems and utilities in this zone.

East Capitol Street Utility Tunnel

- Materials and equipment continue to be mobilized to East Capitol Street in preparation for the construction of the primary CVC utility tunnel. In order for this work to occur as expeditiously as possible and to minimize safety hazards, East Capitol Street, between First and Second Streets, has been closed to vehicular traffic and will remain closed through October 15, 2005. Pedestrian and wheelchair access will be maintained at all times along the south side of East Capitol Street.
- Utility survey work is complete and crews will begin saw-cutting through the asphalt to clear the way for excavation.



In the lower level of the CVC, a stone mason installs a marble base stone, the first finish stone to appear inside the CVC.



Library of Congress (LOC) Tunnel

- All structural work for the tunnel is complete. The transition zone between the tunnel and the LOC will be executed later this year under a separate contract.
- Sequence 2 crews are now installing utility conduit inside the tunnel.
- Weather permitting, final grading and landscaping work will occur this week and next to restore the grounds near the face of the LOC building.

Left: During the next few months, masonry block walls will rise to define interior spaces throughout all three levels of the CVC.



Eventually, this zone that leads to the CVC entrance on the north side of the site will be marked by a curved and gently sloping path along the retaining wall at left. On the right, (where the snow is) two rows of trees will provide a canopy over a stepped walkway. The area between the walkways will be landscaped with grass and trees. Formwork for a trench drain can be seen in the center of the photo.

Next Week – 2/07/04 – 2/11/05

CVC and East Front Plaza Work

- Workers will continue placing the granite paving stones on the CVC roof in the eastern half of the site.
- Crews will continue to install utilities, build mechanical spaces, place concrete, erect blockwork, and backfill and grade the zones near the CVC entrances.
- Installation of the smaller skylights near the face of the Capitol will continue.
- Sequence 1 crews will continue demobilizing equipment and trailers from the House and Senate eggs.

East Front Extension

- Some minor demolition activities may occur related to “punchlist” items.
- Crews will continue to install mechanical systems and utilities.

East Capitol Street Utility Tunnel

- Crews will continue to stage materials and equipment along the street. Saw-cutting through the asphalt will continue. Pedestrian and wheelchair access will be maintained along the south side of the street.

Library of Congress (LOC) Tunnel

- Landscape restoration work is expected to continue above the easternmost end of the tunnel.
- Utility installation will continue inside the tunnel.



A worker uses a blow torch to seal a connection between two water pipes. Installation of utilities and masonry blockwork will be the dominant activities during the next several months.

If you have any questions about the Capitol Visitor Center Project, please contact Tom Fontana, CVC project communications officer, at (202) 228-1310, or by e-mail at tfontana@aac.gov. You can read this document and previous editions on the CVC web site at www.aac.gov.



United States Capitol Visitor Center Weekly Construction Summary



Prepared by the Capitol Visitor Center Project Office, Architect of the Capitol

February 7, 2005



A worker applies a fireproofing material to the steel structural elements on the upper level of the CVC.

This Week – Ongoing Work – 2/07/05 through 2/11/05

CVC and East Front Plaza:

- Workers continue to fireproof steel structural elements throughout the site.
- Workers continue to install mechanical, electrical and plumbing systems, erect interior masonry block work, and install finish stone on the lower level.
- Stone and glass contractors continue installation of the smaller skylights near the face of the Capitol.
- Crews continue assembling the formwork for trench drains along the sloping pedestrian paths that lead to the CVC entrance from First Street.
- Stone masons have resumed installation of the granite paving stones on the East Front Plaza.

East Front Extension

- All major steel erection and demolition activities are complete inside the East Front.
- Crews will continue installing mechanical systems and utilities in this zone.

East Capitol Street Utility Tunnel

- East Capitol Street, between First and Second Streets, has been closed to vehicular traffic and will remain closed through October 15, 2005. Pedestrian and wheelchair access will be maintained at all times.
- Crews have completed saw-cutting through the asphalt and have begun demolishing the road bed.

Library of Congress (LOC) Tunnel

- All structural work for the tunnel is complete. The transition zone between the tunnel and the LOC will be executed later this year under a separate contract.
- Sequence 2 crews continue installing utility conduit inside the tunnel.
- Final grading and landscaping work will occur this week and next to restore the grounds near the face of the LOC building.

Next Week – 2/14/04 – 2/18/05

CVC and East Front Plaza Work

- Workers will continue placing the granite paving stones on the CVC roof in the eastern half of the site.
- Crews will continue to install utilities, build mechanical spaces, place concrete, erect blockwork, and backfill and grade the zones near the CVC entrances.
- Installation of the smaller skylights near the face of the Capitol will continue.
- Sequence 1 crews will continue demobilizing equipment and trailers from the House and Senate eggs.



Workers secure sandstone to the walls of a skylight that is situated above a stairwell atrium located in the north end of the CVC.

East Front Extension

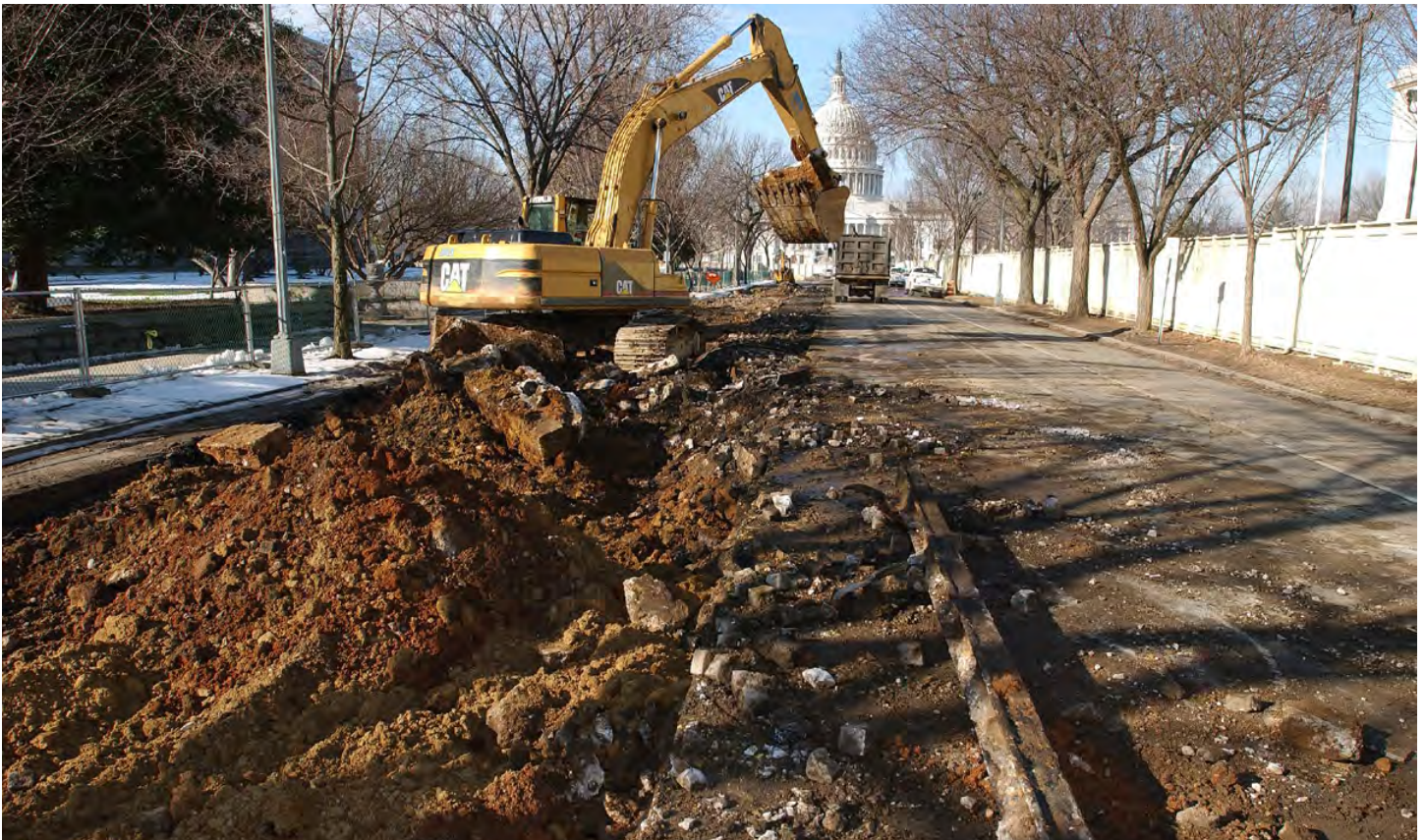
- Some minor demolition activities may occur.
- Crews will continue to install mechanical systems and utilities.

East Capitol Street Utility Tunnel

- Demolition of the road bed will continue.
- Pedestrian and wheelchair access will be maintained along the south side of the street. Changes may occur this week to the traffic light sequencing at Second Street and Constitution Ave. to minimize delays at that intersection.

Library of Congress (LOC) Tunnel

- Landscape restoration work is expected to continue above the easternmost end of the tunnel.
- Utility installation will continue inside the tunnel.



A back-hoe removes asphalt along East Capitol Street to clear the way for excavation of the primary utility trench for the CVC.

If you have any questions about the Capitol Visitor Center Project, please contact Tom Fontana, CVC project communications officer, at (202) 228-1310, or by e-mail at tfontana@oc.gov. You can read this document and previous editions on the CVC web site at www.oc.gov.



United States Capitol Visitor Center Weekly Construction Summary



Prepared by the Capitol Visitor Center Project Office, Architect of the Capitol

February 14, 2005



A maze of ductwork occupies much of the overhead space in the CVC service level. Inset: Sparks fly as a sheet metal worker welds a seam between two pieces of air duct.

This Week – Ongoing Work – 2/14/05 through 2/18/05

CVC and East Front Plaza:

- Workers continue to fireproof steel structural elements throughout the site.
- Workers continue to install mechanical, electrical and plumbing systems, erect interior masonry block work, and install finish stone on the lower level.
- Stone and glass contractors continue installation of the smaller skylights near the face of the Capitol and will begin installing the stone anchors around the larger skylight at the south end of the Great Hall.
- Crews continue assembling the formwork for trench drains along the sloping pedestrian paths that lead to the CVC entrance from First Street.
- Stone masons have resumed installation of the granite paving stones on the East Front Plaza.

East Front Extension

- Crews will continue installing mechanical systems and utilities in this zone.

East Capitol Street Utility Tunnel

- East Capitol Street, between First and Second Streets, has been closed to vehicular traffic and will remain closed through October 15, 2005. Pedestrian and wheelchair access will be maintained at all times.
- Crews have completed saw-cutting through the asphalt and demolishing the road bed. Excavation /drilling has begun.

Library of Congress (LOC) Tunnel

- All structural work for the tunnel is complete. The transition zone between the tunnel and the LOC will be executed later this year under a separate contract.
- Sequence 2 crews have completed installation of security and telecommunications conduit in the tunnel.
- Weather permitting, final grading and landscaping work will continue this week to restore the grounds near the face of the LOC building.

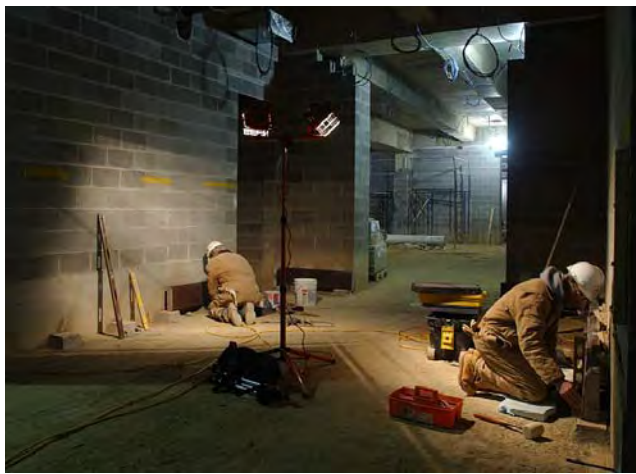


A sprinkler fitter installs a sprinkler system valve.

Next Week – 2/21/04 – 2/25/05

CVC and East Front Plaza Work

- Workers will continue placing the granite paving stones on the CVC roof in the eastern half of the site.
- Crews will continue to fireproof steel elements, install utilities, build mechanical spaces, place concrete, erect block-work, install finish stone, and backfill and grade the zones near the CVC entrances.
- Installation of the smaller skylights near the face of the Capitol will continue.
- Sequence 1 crews will continue demobilizing equipment and trailers from the House and Senate eggs.



Stone masons continue installation of a marble base stone in the lower level of the CVC in a corridor near the cafeteria.

East Front Extension

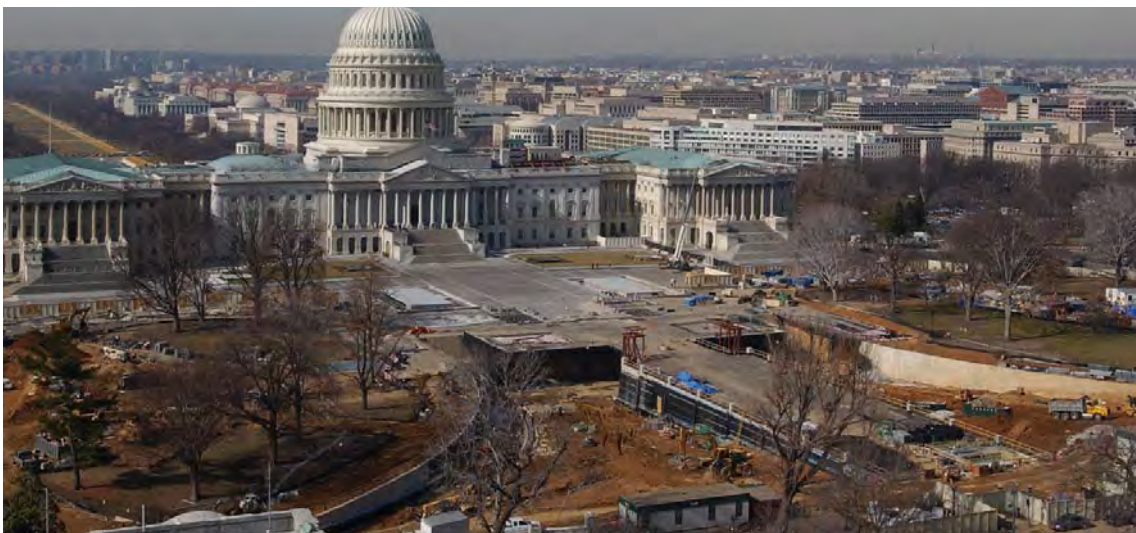
- Some minor demolition activities may occur.
- Crews will continue to install mechanical systems and utilities, and continue elevator work.

East Capitol Street Utility Tunnel

- Excavation will continue.
- Pedestrian and wheelchair access will be maintained along the south side of the street. Changes may occur this week to the traffic light sequencing at Second Street and Constitution Ave. to minimize delays at that intersection.

Library of Congress (LOC) Tunnel

- Landscape restoration work is expected to continue above the easternmost end of the tunnel.
- Utility installation is complete inside the tunnel.



With major structural work complete, most work on the CVC is now occurring below the roof deck. All but two of the Sequence 1 trailers have been removed from the site while Sequence 2 manpower will gradually ramp up to more than 500 workers over the next few months. In the center foreground, bulldozers and back-hoes continue to grade the soil to achieve the gentle slope of the CVC entrance zones.

If you have any questions about the Capitol Visitor Center Project, please contact Tom Fontana, CVC project communications officer, at (202) 228-1310, or by e-mail at tfontana@aoc.gov. You can read this document and previous editions on the CVC web site at www.aoc.gov.



United States Capitol Visitor Center Weekly Construction Summary



Prepared by the Capitol Visitor Center Project Office, Architect of the Capitol

February 22, 2005



Last week, stone masons began to install the first sandstone in the lower level of the CVC in a corridor near the cafeteria.

This Week – Ongoing Work – 2/21/05 through 2/25/05

CVC and East Front Plaza:

- Workers continue to fireproof steel structural elements throughout the site.
- Workers continue to install mechanical, electrical and plumbing systems, erect interior masonry block work, and install finish stone, which now includes sandstone, on the lower level near the CVC cafeteria.
- Stone and glass contractors continue installation of the smaller skylights near the face of the Capitol and will continue installing the stone anchors around the larger skylight at the south end of the Great Hall.
- Crews continue assembling the formwork for trench drains along the south side pedestrian path that leads to the CVC entrance from First Street.
- Stone masons continue installation of the granite paving stones on the East Front Plaza.

East Front Extension

- Crews will continue installing mechanical systems and utilities in this zone.

East Capitol Street Utility Tunnel

- With demolition complete, a drill rig has begun to auger piles that will eventually support the utility tunnel trench walls.

Library of Congress (LOC) Tunnel

- All structural work for the tunnel is complete.
- Weather permitting, final grading and landscaping work will continue this week to restore the grounds near the face of the LOC building.



A glass installation crew guides a pane of glass into position for a skylight situated above a stairwell that leads to Senate expansion space.

Next Week – 2/28/04 – 3/04/05

CVC and East Front Plaza Work

- Workers will continue placing the granite paving stones on the CVC roof in the eastern half of the site.
- Crews will continue to fireproof steel elements, install utilities, build mechanical spaces, place concrete, erect block-work, install finish stone, and backfill and grade the zones near the CVC entrances.
- Installation of the smaller skylight near the face of the Capitol on the south side will continue.

East Front Extension

- Some minor demolition activities may occur.
- Crews will continue to install mechanical systems and utilities, and continue elevator work.

East Capitol Street Utility Tunnel

- A drill rig will continue to auger piles that will eventually support the utility tunnel trench walls.

Library of Congress (LOC) Tunnel

- Landscape restoration work is expected to continue above the easternmost end of the tunnel near the face of the LOC.
- Installation of security and telecommunications conduit is complete inside the tunnel.



On a recent tour with Senator Michael Enzi (R-WY) and his wife, Architect of the Capitol Alan Hantman (right) points out the view of the Capitol that will greet visitors just before they enter the north side CVC entrance.



United States Capitol Visitor Center Weekly Construction Summary



Prepared by the Capitol Visitor Center Project Office, Architect of the Capitol

February 28, 2005



A worker welds a portion of a catwalk to a steel beam that supports the roof of the Congressional Auditorium.

This Week – Ongoing Work – 2/28/05 through 3/04/05

CVC and East Front Plaza:

- Workers continue to fireproof steel structural elements throughout the site.
- Workers continue to install mechanical, electrical and plumbing systems, erect interior masonry block work, and install finish stone, which now includes sandstone, on the lower level near the CVC cafeteria.
- Stone and glass contractors will resume installation of the skylight near the face of the Capitol on the House side and will continue installing the stone anchors around the larger skylight at the south end of the Great Hall.
- Crews will place concrete for a trench drain along the south side pedestrian path that leads to the CVC entrance.
- Weather permitting, stone masons will continue installation of the granite paving stones on the East Front Plaza.

East Front Extension

- Crews will continue installing mechanical systems and utilities.

East Capitol Street Utility Tunnel

- A drill rig continues to auger piles that will eventually support the utility tunnel trench walls (*see photo at right*).

Workers guide a steel pile into place along East Capitol Street. Wood planks (lagging) will be placed between the piles to create a wall that will facilitate excavation of a trench for a new utility tunnel.





With the help of a mobile scaffold, workers apply a fireproofing membrane on the steel columns and beams inside the CVC entrance zone.

Library of Congress (LOC) Tunnel

- All structural work for the tunnel is complete.
- Weather permitting, final grading and landscaping work will continue this week to restore the grounds near the face of the LOC building.

Next Week – 3/07/04 – 3/11/05

CVC and East Front Plaza Work

- Workers will continue placing the granite paving stones on the CVC roof in the eastern half of the site.
- Crews will continue to fireproof steel elements, install utilities, build mechanical spaces, place concrete, erect blockwork, install finish stone, and backfill and grade the zones near the CVC entrances.
- A crew will continue installation of the smaller skylight near the face of the Capitol on the south side.

East Front Extension

- Some minor demolition activities may occur.
- Crews will continue to install mechanical systems and utilities, and continue elevator work.

East Capitol Street Utility Tunnel

- A drill rig will continue to auger piles that will help support the utility tunnel trench walls (*see bottom photo opposite page*).

Library of Congress (LOC) Tunnel

- Landscape restoration work may continue above the easternmost end of the tunnel near the face of the LOC.
- Installation of security and telecommunications conduit is complete inside the tunnel.



Tons of sandstone have been stockpiled on the floor of the Great Hall inside the CVC. Stone masons are currently working in the corridors that connect the Great Hall to the CVC dining facility.



United States Capitol Visitor Center Weekly Construction Summary



Prepared by the Capitol Visitor Center Project Office, Architect of the Capitol

March 7, 2005



On a scaffold at left, masonry workers build a masonry block column adjacent to one of the steel columns inside the Great Hall of the CVC.

This Week – Ongoing Work – 3/07/05 through 3/11/05

CVC and East Front Plaza:

- Workers continue to fireproof steel structural elements throughout the site.
- Workers continue to install mechanical, electrical and plumbing systems, erect interior masonry block work, and install finish stone, which now includes sandstone, on the lower level.
- Stone and glass contractors will continue installation of the skylight near the face of the Capitol on the House side and will continue installing the stone anchors around the larger skylight at the south end of the Great Hall.
- A crew is backfilling soil along a concrete trench drain that flanks the south side pedestrian path.
- Weather permitting, stone masons will continue installation of the granite paving stones on the East Front Plaza.

East Front Extension

- Crews will continue installing mechanical systems and utilities.

East Capitol Street Utility Tunnel

- A drill rig has completed augering piles that will eventually support the utility tunnel trench walls. Excavation is ongoing.



Sparks fly as a worker cuts through a steel plate in a stairwell wall on the north side of the CVC.



Workers secure a plastic tarp below a skylight to protect it from the fireproofing material that will be applied to the surrounding steel structure.

Library of Congress (LOC) Tunnel

- All structural work for the tunnel is complete. Utility work and interior plaster and stonework will occur later this year. Installation of security and telecommunications conduit is complete inside the tunnel.
- The connection to the Library of Congress building interior will be completed through a separate contract to be executed later in 2005.

Next Week – 3/14/04 – 3/18/05

CVC and East Front Plaza Work

- Workers will continue placing the granite paving stones on the CVC roof in the eastern half of the site.
- Crews will continue to fireproof steel elements, install utilities, build mechanical spaces, place concrete, erect blockwork, install finish stone, and backfill and grade the zones near the CVC entrances.
- A crew will continue installation of the smaller skylight near the face of the Capitol on the south side.
- Installation of new air handling units will begin.

East Front Extension

- Some minor demolition activities may occur.
- Crews will continue to install mechanical systems and utilities, and continue elevator work.

East Capitol Street Utility Tunnel

- Excavation of the utility trench will continue. Lagging (wood planks) will be inserted between steel piles that will support the trench as excavation continues.



Sandstone now rises close to ten feet in a CVC corridor.



United States Capitol Visitor Center Weekly Construction Summary



Prepared by the Capitol Visitor Center Project Office, Architect of the Capitol

March 14, 2005



Large return fans, part of the CVC air handling system, are currently being installed in the service level.

This Week – Ongoing Work – 3/14/05 through 3/18/05

CVC and East Front Plaza:

- Fireproofing is nearly complete on the upper level.
- Workers continue to install mechanical, electrical and plumbing systems, erect interior masonry block work, and install marble and sandstone on the lower level.
- A glass contractor will begin installation of the skylight near the face of the Capitol on the House side.
- Crews continue to backfill soil in the eastern half of the site to achieve the final slope for the CVC entrance zones.
- Stone masons will continue installation of pavers on the East Plaza.
- Installation of air handling units will begin.

East Front Extension

- Crews will continue installing mechanical systems and utilities.

East Capitol Street Utility Tunnel

- Steel support piles are in place and excavation is ongoing.

Library of Congress (LOC) Tunnel

- All structural work for the tunnel is complete. Utility work and interior plaster and stonework will occur later this year.
- The connection to the Library of Congress building interior will be completed through a separate contract to be executed later in 2005.



Stone masons install sandstone around a CVC skylight.

Next Week – 3/21/04 – 3/25/05

CVC and East Front Plaza Work

- Workers will continue placing the granite paving stones on the CVC roof in the eastern half of the site.
- Crews will continue to fireproof steel elements, install utilities, build mechanical spaces, place concrete, erect blockwork, install finish stone, and backfill and grade the zones near the CVC entrances.
- A crew may need to continue installation of the smaller skylight near the face of the Capitol on the south side.
- Installation of new air handling units will continue.



A worker grinds down a steel pipe in the CVC service level.

East Front Extension

- Some minor demolition activities may occur.
- Crews will continue to install mechanical systems and utilities, and continue elevator work.

East Capitol Street Utility Tunnel

- Excavation of the utility trench will continue. Lagging (wood planks) will be inserted between steel piles that, together, will support the trench as excavation continues (see photo below right).



Above: Workers install one of several hundred door jams that are included in the CVC floor plans.

Right: Excavation continues along East Capitol Street, between First and Second Streets, for the primary CVC utility trench. Here, a backhoe suspended over a temporary bridge removes soils from a trench that will eventually reach a depth of 20 feet.



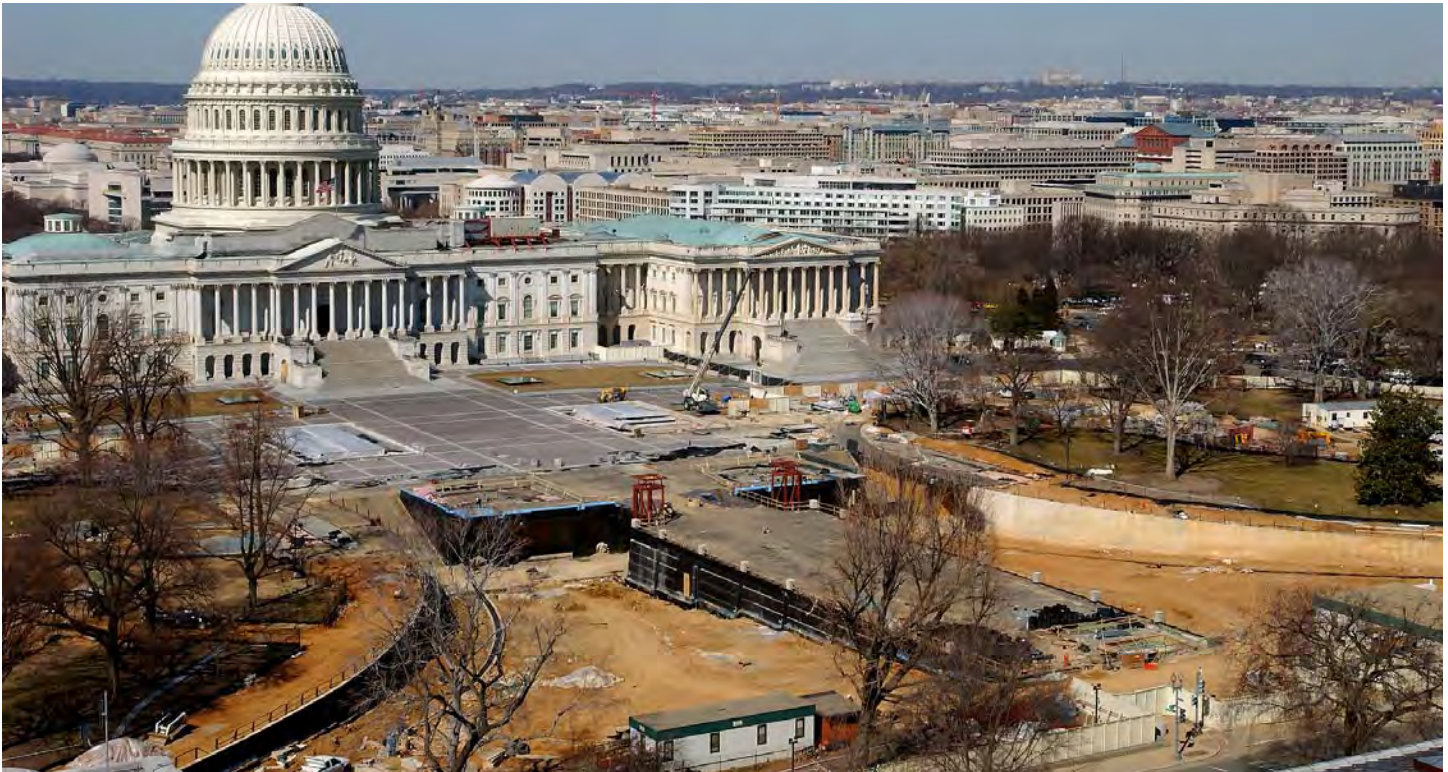


United States Capitol Visitor Center Weekly Construction Summary



Prepared by the Capitol Visitor Center Project Office, Architect of the Capitol

March 21, 2005



A view of the East Front Plaza, as seen from the Library of Congress dome last week, shows the CVC entrance zones (foreground), which gently slope down 18 feet from First Street NE/SE. The red steel structures for two elevator towers can be seen in the center of the photo. Over the next few months, crews will be assembling formwork and placing concrete for the pedestrian ramps and stepped walkways that lead to the CVC entrances.

This Week – Ongoing Work – 3/21/05 through 3/25/05

CVC and East Front Plaza:

- Fireproofing continues on all three levels inside the CVC, and within the Congressional Auditorium.
- Workers continue to install mechanical, electrical and plumbing systems, erect interior masonry block work, and install marble and sandstone on the lower level. More stone masons will be added to the work crew by the end of the week.
- All four skylights near the face of the Capitol have been installed.
- Crews continue to backfill soil in the eastern half of the site to achieve the final slope for the CVC entrance zones. Installation of additional drainage elements and structural foundation work will begin in April to prepare the entrance zone for the pedestrian ramps and stepped paths that slope down to the CVC entrances from First Street NE/SE.
- Stone masons will begin installing curb stones around the House and Senate eggs and across the center of the Plaza near the monumental stairs at the CVC entrances.

East Front Extension

- Crews will continue installing mechanical systems related to the elevators on the south side of this zone.

East Capitol Street Utility Tunnel

- Steel support piles are in place and excavation is ongoing. Most of the excavation is half-way down to its final depth of 20 feet, and within two feet of the bottom in some locations. Pre-case concrete tunnel sections may arrive in early May.



In the lower level of the CVC, a worker sets one of the 750,000 masonry blocks that will help define the interiors spaces within the CVC.



A stone mason installs sandstone blocks along one of the corridor walls near the CVC food service area on the lower level.

Library of Congress (LOC) Tunnel

- All structural work for the tunnel is complete. Utility work and interior plaster and stonework will begin later this spring.
- The connection to the Library of Congress building interior will be completed through a separate contract to be executed later in 2005.

Next Week – 3/28/04 – 4/01/05

CVC and East Front Plaza Work

- Workers will continue placing the granite curb stones on the East Plaza in the eastern have of the CVC site.
- Crews will continue to fireproof steel elements, install utilities, build mechanical spaces, place concrete, erect blockwork, install finish stone, and prepare the CVC entrance zones for the construction of paths and steps.
- A crew may need to continue installation of the smaller skylight near the face of the Capitol on the south side.
- Installation of new air handling units will continue.



Workers have completed the installation of glass panes for the last of four skylights that lie along the East face of the Capitol.

East Front Extension

- Some minor demolition activities may occur.
- Fireproofing of steel elements is expected to begin in this zone.
- Crews will continue to install mechanical systems and utilities, and continue elevator work.

East Capitol Street Utility Tunnel

- Excavation of the utility trench will continue. Lagging (wood planks) will be inserted between steel piles that, together, will support the trench as excavation continues to a depth of 20 feet.

If you have any questions about the Capitol Visitor Center Project, please contact Tom Fontana, CVC project communications officer, at (202) 228-1310, or by e-mail at tfontana@oc.gov. You can read this document and previous editions on the CVC web site at www.aoc.gov.



United States Capitol Visitor Center Weekly Construction Summary



Prepared by the Capitol Visitor Center Project Office, Architect of the Capitol

March 28, 2005



Above is an aerial view of the Capitol and the East Capitol Grounds taken Thursday, March 24, 2005. Most of the work on the CVC is occurring below the roof deck on all three levels of the facility. Above ground, all of the four skylights near the face of the Capitol are in place. Meanwhile, a crane was used to remove some of the temporary cover panels on one of the two large skylights in the center of the Plaza (center of photo) to facilitate installation of the glass panel anchoring system within the skylight's sandstone border (see photo on second page). In April, workers will begin assembling formwork for the pedestrian ramps and stepped walkways that slope down from First Street NE/SE. As weather turns drier later this week, stone masons are expected to resume installation of granite pavers and curb stones on the East Plaza.

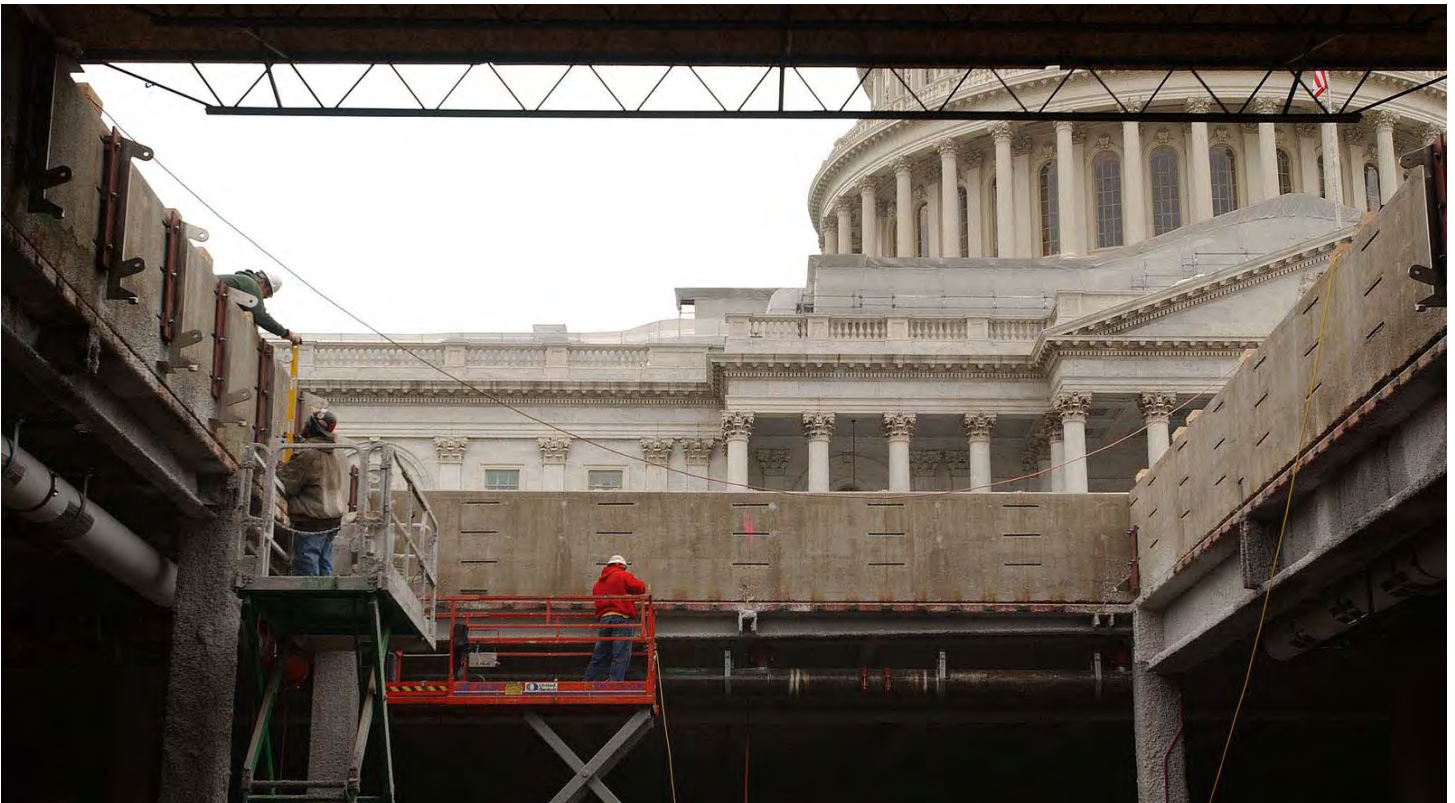
This Week – Ongoing Work – 3/28/05 through 4/01/05

CVC and East Front Plaza:

- Fireproofing continues on all three levels inside the CVC, and within the Congressional Auditorium.
- Workers continue to install mechanical, electrical and plumbing systems, erect interior masonry block work, and install marble and sandstone on the lower level. All four skylights near the face of the Capitol have been installed.
- Crews continue to backfill soil in the eastern half of the site to achieve the final slope for the CVC entrance zones. Installation of additional drainage elements and structural foundation work will begin in April to prepare the entrance zone for the pedestrian ramps and stepped paths that slope down to the CVC entrances from First Street NE/SE.
- Later this week, stone masons are expected to resume installation of curb stones around the House and Senate eggs and across the center of the Plaza near the monumental stairs at the CVC entrances.



Workers use shovels to facilitate the insertion of a wood plank that will help maintain the north wall of the East Capitol St. utility trench.



Within the sandstone border of one of the two Great Hall skylights, workers insert steel anchors that will help support the glass panels.

East Front Extension

- Crews will continue installing mechanical systems related to the elevators on the south side of this zone.

East Capitol Street Utility Tunnel

- Steel support piles are in place and excavation is ongoing. Most of the excavation is half-way down to its final depth of 20 feet. Pre-cast concrete tunnel sections are expected to arrive in early May.

Library of Congress (LOC) Tunnel

- All structural work for the tunnel is complete. Utility work and interior plaster and stonework will begin later this spring.

Next Week – 4/04/04 – 4/08/05

CVC and East Front Plaza Work

- Workers will continue placing the granite curb stones on the East Plaza in the eastern half of the CVC site.
- Crews will continue to fireproof steel elements, install utilities, build mechanical spaces, place concrete, erect blockwork, install finish stone, and prepare the CVC entrance zones for the construction of paths and steps.
- Installation of new air handling units will continue.

East Front Extension

- Some minor demolition activities may occur.
- Crews will continue to install mechanical systems and utilities, and continue elevator work in the southern half of this zone.

East Capitol Street Utility Tunnel

- Excavation of the utility trench will continue. Lagging (wood planks) will be inserted between steel piles that, together, will support the trench as excavation continues to a depth of 20 feet (see bottom photo on first page).



A worker installs thermal insulation around ductwork in the lower level of the CVC.

If you have any questions about the Capitol Visitor Center Project, please contact Tom Fontana, CVC project communications officer, at (202) 228-1310, or by e-mail at tfontana@oc.gov. You can read this document and previous editions on the CVC web site at www.oc.gov.



United States Capitol Visitor Center Weekly Construction Summary



Prepared by the Capitol Visitor Center Project Office, Architect of the Capitol

April 4, 2005



Workers install a storm drain pipe in the sloping ground leading to the CVC entrance on the south side of the site. The pipe is part of an elaborate drainage system that will intercept water before it reaches the CVC entrances and monumental stairs at the base of the slope (center right).

This Week – Ongoing Work – 4/04/05 through 4/08/05

CVC and East Front Plaza:

- Fireproofing continues on all three levels inside the CVC, and within the Congressional Auditorium.
- Workers continue to install mechanical, electrical and plumbing systems, erect interior masonry block work, and install marble and sandstone on the lower level. All four skylights near the face of the Capitol have been installed.
- Installation of additional drainage elements and structural foundation work will begin in April to prepare the entrance zone for the pedestrian ramps and stepped paths that slope down to the CVC entrances from First Street NE/SE.
- Later this week, stone masons are expected to resume installation of curb stones around the House and Senate eggs and across the center of the Plaza near the monumental stairs at the CVC entrances.

East Front Extension

- Crews will continue installing mechanical systems related to the elevators on the south side of this zone.

East Capitol Street Utility Tunnel

- Steel support piles are in place and excavation will resume later this week once water from the recent heavy rains is pumped out. Most of the excavation is half-way down to its final depth of 20 feet. Pre-cast concrete tunnel sections are expected to arrive in early May.

Library of Congress (LOC) Tunnel

- All structural work for the tunnel is complete. Utility work and interior plaster and stonework will begin later this spring.



In the lower level of the CVC a worker pumps air at high pressure into a portion of ductwork to test the seals that connect the ductwork sections.

Next Week – 4/11/04 – 4/15/05

CVC and East Front Plaza Work

- Workers will continue placing the granite curb stones on the East Plaza in the eastern half of the CVC site.
- Crews will continue to fireproof steel elements, install utilities, build mechanical spaces, place concrete, erect blockwork, install finish stone, and prepare the CVC entrance zones for the construction of paths and steps.
- Installation of new air handling units will continue.

East Front Extension

- Some minor demolition activities may occur.
- Crews will continue to install mechanical systems and utilities, and continue elevator work in the southern half of this zone.

East Capitol Street Utility Tunnel

- Excavation of the utility trench will continue. Wood planks are being inserted between steel piles that, together, support the trench as excavation continues to a depth of 20 feet. The pre-cast concrete sections of the utility tunnel are expected to arrive in early May.



A truck exits the new truck service tunnel on the north side of Constitution Avenue. Between 50-60 trucks use the tunnel each week to deliver materials for the Sequence 2 contract (build-out and finishes).

If you have any questions about the Capitol Visitor Center Project, please contact Tom Fontana, CVC project communications officer, at (202) 228-1310, or by e-mail at tfontana@oc.gov. You can read this document and previous editions on the CVC web site at www.oc.gov.



United States Capitol Visitor Center Weekly Construction Summary



Prepared by the Capitol Visitor Center Project Office, Architect of the Capitol

April 11, 2005



Workers prepare the base of the front wall in one of the CVC's two orientation theaters. Eventually, the wall will rise thirty feet to the roof of the CVC and will accommodate a screen 20 feet high and nearly 35 feet across. At peak capacity, 250 visitors at a time will view a 12-minute film about the Capitol and the Congress, three times per hour in each theater, before beginning their tour of the Capitol building.

This Week – Ongoing Work – 4/11/05 through 4/15/05

CVC and East Front Plaza:

- Workers continue to install mechanical, electrical and plumbing systems, erect interior masonry block work, and install interior marble and sandstone in the eastern half of the facility, including portions of the Great Hall.
- Fireproofing continues on all three levels inside the CVC, and fireproofing cleanup will continue within the Congressional Auditorium.
- Stone masons will resume installation of curb stones around the House and Senate eggs and across the center of the Plaza near the monumental stairs at the CVC entrances.

East Front Extension

- Crews will continue installing mechanical systems related to the elevators on the south side of this zone.

East Capitol Street Utility Tunnel

- Steel support piles are in place and excavation will continue with some areas reaching the final depth of 20 feet. Pre-cast concrete tunnel sections are expected to arrive in early May.
- First Street, at its intersection with East Capitol Street, will be constricted to accommodate the placement of a temporary bridge across First Street at that location. One lane of traffic will be maintained in each direction at all times.

Library of Congress (LOC) Tunnel

- All structural work for the tunnel is complete. Utility work and interior plaster and stonework will begin later this spring.

Next Week – 4/18/04 – 4/22/05

CVC and East Front Plaza Work

- Workers will continue placing the granite curb stones on the East Plaza in the eastern half of the CVC site.
- Granite paving installation will resume, as well as the inspection of those pavers already installed.
- Crews will continue to fireproof steel elements, install utilities, build mechanical spaces, place concrete, erect blockwork, install finish stone, and prepare the CVC entrance zones for the construction of paths and steps.
- Installation of new air handling units will continue.
- Installation of additional drainage elements and structural foundation work will continue in May to prepare the entrance zones for the pedestrian ramps and stepped paths that slope down to the CVC entrances.



Architect of the Capitol Alan Hantman, right, discusses interior construction activities with House Appropriations Chairman Jerry Lewis (R-CA) during a CVC site walk on April 8, 2005.

East Front Extension

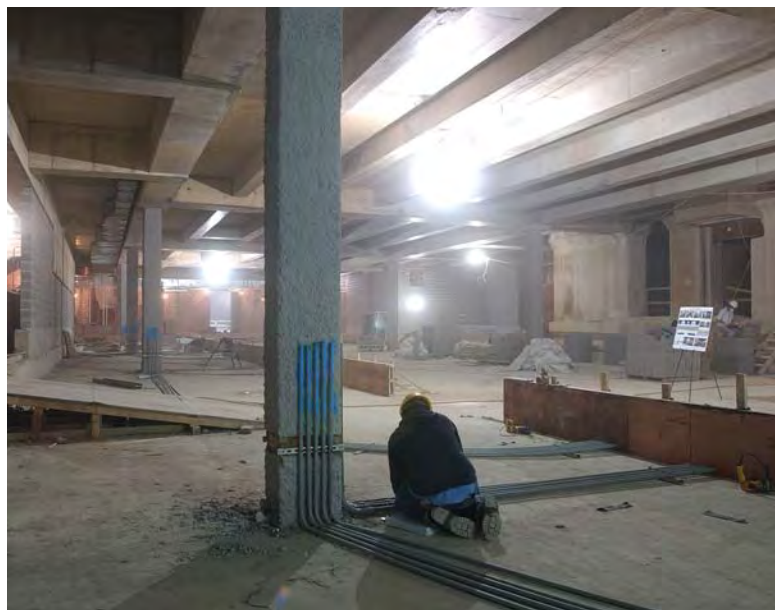
- Some minor demolition activities may occur.
- Crews will continue to install mechanical systems and utilities, and continue elevator work in the southern half of this zone, including the start of masonry blockwork installation for the elevator shafts.

East Capitol Street Utility Tunnel

- Excavation of the utility trench will continue. Lane constrictions along First street will continue for several months.



Along East Capitol Street, excavation work continues in a utility trench that, eventually, will reach a depth of 20 feet.



A worker lays conduit in the floor of the Exhibition Gallery. The floor will be raised to allow some portions of the gallery to be illuminated from below.



United States Capitol Visitor Center Weekly Construction Summary



Prepared by the Capitol Visitor Center Project Office, Architect of the Capitol

April 18, 2005



A CVC worker applies grout between masonry blocks at the south end of the Great Hall. An escalator bank will lie on the other side of the wall.

This Week – Ongoing Work – 4/18/05 through 4/22/05

CVC and East Front Plaza:

- Workers continue to install mechanical, electrical and plumbing systems, erect masonry block work, and install interior marble and sandstone in the eastern half of the facility, including portions of the Great Hall.
- Fireproofing continues on all three levels inside the CVC. Fireproofing is complete within the Congressional Auditorium.
- Stone masons will continue installation of curb stones around the House and Senate eggs and across the center of the Plaza near the monumental stairs at the CVC entrances.
- Granite paving installation will resume, as well as the inspection of those pavers already installed.

East Front Extension

- Crews will continue installing mechanical systems related to the elevators on the south side of this zone and they are expected to complete installation of the vertical rails within the elevator shafts.



A worker prepares a scaffold for utility installation work that will occur along the ceiling within one of the CVC's two orientation theaters.

East Capitol Street Utility Tunnel

- Excavation of the trench between First Street and Second Street is complete. A crew will continue to place a concrete slab at the base of the trench. The slab will support the pre-cast concrete tunnel sections, which are expected to arrive in early May.
- First Street continues to be constricted to clear the way for utility work and the placement of a temporary bridge across First Street at its intersection with East Capitol Street. One lane of traffic will be maintained in each direction at all times. Pedestrian access is available across East Capitol on the west side of First Street.

Next Week – 4/25/04 – 4/29/05

CVC and East Front Plaza Work

- Crews will continue to fireproof steel elements, install utilities, build mechanical spaces, place concrete, erect blockwork, and install finish stone.
- Installation of additional drainage elements and structural foundation work will continue in May to prepare the entrance zones for the pedestrian ramps and stepped paths that slope down to the CVC entrances.
- Workers will continue placing the granite curb stones on the East Plaza in the eastern half of the CVC site. Granite paving installation will continue, as well as the inspection of those pavers already installed.

East Front Extension

- Some minor demolition activities may occur.
- Crews will continue to install mechanical systems and utilities, and continue elevator work.

East Capitol Street Utility Tunnel

- Work will continue on the utility trench to prepare it for the delivery of pre-cast concrete sections, which will arrive in May. Lane constrictions along First Street NE/SE will continue for several months.

If you have any questions about the Capitol Visitor Center Project, please contact Tom Fontana, CVC project communications officer, at (202) 228-1310, or by e-mail at tfontana@aac.gov. You can read this document and previous editions on the CVC web site at www.aoc.gov.



United States Capitol Visitor Center Weekly Construction Summary



Prepared by the Capitol Visitor Center Project Office, Architect of the Capitol

April 25, 2005

This Week – Ongoing Work – 4/25/05 through 4/29/05

CVC and East Front Plaza:

- Workers continue to install mechanical, electrical and plumbing systems, erect masonry block work, and install interior marble and sandstone.
- Fireproofing is complete on all three levels inside the CVC. Fireproofing begins in the East Front Extension.
- Stone masons will continue installation of curb stones around the House and Senate eggs and across the center of the Plaza near the monumental stairs at the CVC entrances.
- Granite paving installation will resume on the eastern half of the site and exterior stonework will begin along the pedestrian ramp on the north side of the CVC entrance zone.

East Front Extension

- Crews will continue installing mechanical systems related to the elevators on the south side of this zone and they are expected to complete installation of the vertical rails within the elevator shafts.

East Capitol Street Utility Tunnel

- Excavation of the trench between First Street and Second Street is complete. A crew will continue to place a concrete slab at the base of the trench. The slab will support the pre-cast concrete tunnel sections, which are expected to arrive in early May.
- First Street continues to be constricted to clear the way for utility work and the placement of a temporary bridge across First Street at its intersection with East Capitol Street. One lane of traffic will continue to be maintained in each direction at all times. Pedestrian access is available across East Capitol on the west side of First Street.

Next Week – 5/02/04 – 5/06/05



Sequence 2 workers install ductwork to the ceiling above a staircase at the eastern end of the Great Hall. At right, Sunlight pours in through the Great Hall's south skylight.



In the Great Hall, a stone mason applies grout between two sandstone blocks.

CVC and East Front Plaza Work

- Crews will continue to install utilities, build mechanical spaces, place concrete, erect blockwork, and install finish stone. Fireproofing work may begin in the East Front Extension.
- Installation of additional drainage elements and structural foundation work will continue at the CVC entrance zones for the pedestrian ramps and stepped paths that slope down to the CVC entrances.
- Workers will continue placing the granite pavers on the East Plaza in the eastern half of the CVC site. Exterior stone installation will continue.



A worker prepares the ground at the base of the pedestrian ramp retaining wall on the north side of the CVC entrance zone. Stone masons are expected to begin installation of roughly cut granite blocks (center) to the wall later this week. The stones are intended to mimic the cut and color of the granite stones used by Frederick Law Olmsted in the late 1870s to build the low retaining walls along the perimeter of Capitol square.

East Front Extension

- Some minor demolition activities may occur.
- Crews will continue to install mechanical systems and utilities, and continue elevator work. Fireproofing of steel structural elements will continue.

East Capitol Street Utility Tunnel

- Work will continue on the utility trench to prepare it for the delivery of pre-cast concrete sections, which will arrive in May. Lane constrictions along First Street NE/SE will continue for several months.



A Sequence 2 worker installs a concrete masonry block to a column inside one of the CVC’s two orientation theaters.



Workers install ductwork in a CVC orientation theater.

If you have any questions about the Capitol Visitor Center project, please contact Tom Fontana, communications officer, at (202) 228-1310, or by e-mail at tfontana@aac.gov. You can read this document and previous editions on the CVC web site at www.aac.gov.



United States Capitol Visitor Center Weekly Construction Summary



Prepared by the Capitol Visitor Center Project Office, Architect of the Capitol

May 2, 2005



Stone masons apply a granite block from a quarry in Culpepper, VA., to the retaining wall within the CVC entrance zone. The “split-face” cut of the granite is intended to mimic the rough cuts of the granite blocks in the historic retaining walls around the perimeter of Capitol Square.

This Week – Ongoing Work – 5/02/05 through 5/06/05

CVC and East Front Plaza:

- Workers continue to install mechanical, electrical and plumbing systems, erect masonry block work, and install interior marble and sandstone.
- Fireproofing begins in the East Front Extension.
- Granite paving will continue on the eastern half of the East Front Plaza.
- Exterior stonework will continue along the pedestrian ramp on the north side of the CVC entrance zone (photo above).

East Front Extension

- Crews will continue installing mechanical systems related to the elevators on the south side of this zone. Installation of the vertical rails is complete and the elevator platform is operational.

East Capitol Street Utility Tunnel

- Excavation of the trench between First Street and Second Street is complete and a base concrete slab is in place. The slab will support the pre-cast concrete tunnel sections. Installation of the pre-cast concrete will begin this week.
- First Street continues to be constricted to clear the way for utility work and the placement of a temporary bridge across First Street at its intersection with East Capitol Street. One lane of traffic will continue to be maintained in each direction at all times. Pedestrian access is available across East Capitol on the west side of First Street.



Above: A worker completes a blockwork column inside one of two CVC orientation theaters. Inset at left: An artists rendering of a completed orientation theater. A 12-minute film about the Capitol and the Congress is being produced and will be shown three times per hour in each theater.

Next Week – 5/09/04 – 5/13/05

CVC and East Front Plaza Work

- Crews will continue to install utilities, build mechanical spaces, place concrete, erect blockwork, and install finish stone.
- Installation of additional drainage elements and structural foundation work will continue at the CVC entrance zones for the pedestrian ramps and stepped paths that slope down to the CVC entrances.
- Workers will continue placing the granite pavers on the East Plaza in the eastern half of the CVC site. Exterior wall stone installation will continue in the north side of the CVC entrance zone.

East Front Extension

- Some minor demolition activities may occur.
- Crews will continue to install mechanical systems and utilities, and continue elevator work. Fireproofing of steel structural elements will continue inside the East Front Extension (inside the Capitol).

East Capitol Street Utility Tunnel

- Installation of pre-cast concrete sections will continue. Lane constrictions along First Street NE/SE will continue for several months.



A crew installs granite pavers on the East Front Plaza.

If you have any questions about the Capitol Visitor Center project, please contact Tom Fontana, communications officer, at (202) 228-1310, or by e-mail at fontana@aoc.gov. You can read this document and previous editions on the CVC web site at www.aoc.gov.



United States Capitol Visitor Center Weekly Construction Summary



Prepared by the Capitol Visitor Center Project Office, Architect of the Capitol

May 9, 2005



Above: A view of the Great Hall as it appears currently. Fireproofing of all steel elements is complete and blockwork columns stand adjacent to steel support columns along the western edge of the space (center of photo). Inset: An artist's rendering of the completed Great Hall.

This Week – Ongoing Work – 5/09/05 through 5/13/05

CVC and East Front Plaza:

- Workers continue to install mechanical, electrical and plumbing systems, erect masonry block work, and install interior marble and sandstone. Blockwork is nearly complete in the south Orientation Theater and the Exhibition Gallery.
- Fireproofing is complete in all three levels and Congressional Auditorium.
- Crews will place placing a raised concrete slab in a portion of the Exhibition Gallery (see photo at right).
- Granite paving will continue on the eastern half of the East Front Plaza.
- Exterior stonework will continue along the pedestrian ramp on the north side of the CVC entrance zone.
- Installation of air handling units will continue. One unit alone measures 40 feet long, 20 feet wide and 12 feet high.

East Front Extension

- Crews will continue installing mechanical systems related to the elevators on the south side of this zone. Installation of the vertical rails is complete and the elevator platform is operational.
- Fireproofing will continue in this zone.



Workers level off a concrete slab after a recent concrete placement in the Exhibition Gallery.



A worker guides a section of a pre-cast concrete tunnel into the trench for the CVC utility tunnel along East Capitol Street.

East Capitol Street Utility Tunnel

- Excavation of the trench between First Street and Second Street is complete and a base concrete slab is in place. Pre-cast concrete tunnel sections will be placed on the slab through the month of May (see photo above).
- First Street continues to be constricted to clear the way for utility work and the placement of a temporary bridge across First Street at its intersection with East Capitol Street. One lane of traffic will continue to be maintained in each direction at all times. Pedestrian access is available across East Capitol on the west side of First Street.

Next Week – 5/16/04 – 5/20/05

CVC and East Front Plaza Work

- Crews will continue to install ductwork and piping for all heating, cooling, supply, waste water, fire protection, and electrical systems; build mechanical spaces, place concrete, erect blockwork, and install finish stone.
- Installation of additional drainage elements and structural foundation work will continue at the CVC entrance zones for the pedestrian ramps and stepped paths that slope down to the CVC entrances.
- Workers will continue placing the granite pavers on the East Plaza in the eastern half of the CVC site. Exterior wall stone installation will continue in the north side of the CVC entrance zone.

East Front Extension

- Crews will continue to install mechanical systems and utilities, and continue elevator work. Fireproofing of steel structural elements will continue inside the East Front Extension.

East Capitol Street Utility Tunnel

- Installation of pre-cast concrete sections will continue. Lane constrictions and pedestrian detours along First Street NE/SE will continue for several months.

If you have any questions about the Capitol Visitor Center project, please contact Tom Fontana, communications officer, at (202) 228-1310, or by e-mail at tfontana@oc.gov. You can read this document and previous editions on the CVC web site at www.oc.gov.



United States Capitol Visitor Center Weekly Construction Summary



Prepared by the Capitol Visitor Center Project Office, Architect of the Capitol

May 16, 2005



Workers place concrete around electrical and plumbing conduit on the East Front Plaza. The concrete slab will support one of the two historic oval fountains designed by Frederick Law Olmsted in 1874. All of the historic Olmsted features will be re-installed in their original locations.

This Week – Ongoing Work – 5/16/05 through 5/20/05

CVC and East Front Plaza:

- Workers continue to install mechanical, electrical and plumbing systems, erect masonry block work, and install interior marble and sandstone. Blockwork is nearly complete in the Orientation Theaters and the Exhibition Gallery.
- Sheetrock and plaster work will begin in the food services area and air shafts.
- Fireproofing is complete in all three levels and inside the Congressional Auditorium.
- Crews will place a raised concrete slab along the western half of the Exhibition Gallery.
- Granite paving will continue on the eastern half of the East Front Plaza.
- Exterior stonework will continue along the pedestrian ramp on the north side of the CVC entrance zone.
- Installation of air handling units will continue.

East Front Extension

- Crews will continue installing mechanical systems related to the elevators on the south side of this zone.
- Fireproofing will continue in this zone.



The Congressional Auditorium below the East Capitol Street Extension continues to take shape as blockwork rises along the south wall (right).

East Capitol Street Utility Tunnel

- Excavation of the trench between First Street and Second Street is complete and a base concrete slab is in place. Crews will continue to place the pre-cast concrete tunnel sections through the month of May.
- First Street continues to be constricted to clear the way for utility work and the placement of a temporary bridge across First Street at its intersection with East Capitol Street. One lane of traffic will continue to be maintained in each direction at all times. Pedestrian access is available across East Capitol on the west side of First Street.

Next Week – 5/23/04 – 5/27/05

CVC and East Front Plaza Work

- Crews will continue to install ductwork and piping for all heating, cooling, supply, waste water, fire protection, and electrical systems; build mechanical spaces, place concrete, erect blockwork, and install finish stone.
- Sheetrock and plaster work will continue in the food services area and air shafts.
- Workers will continue placing the granite pavers on the East Plaza in the eastern half of the CVC site. Exterior wall stone installation will continue along the north side of the CVC entrance zone.

East Front Extension

- Crews will continue to install mechanical systems and utilities, and continue elevator work. Fireproofing of steel structural elements will continue inside the East Front Extension and will begin on the 2nd floor.

East Capitol Street Utility Tunnel

- Installation of pre-cast concrete sections will continue. Lane constrictions and pedestrian detours along First Street NE/SE will continue for several months.

If you have any questions about the Capitol Visitor Center project, please contact Tom Fontana, communications officer, at (202) 228-1310, or by e-mail at tfontana@oc.gov. You can read this document and previous editions on the CVC web site at www.oc.gov.



United States Capitol Visitor Center Weekly Construction Summary



Prepared by the Capitol Visitor Center Project Office, Architect of the Capitol

May 16, 2005



Stone masons install sandstone in the Great Hall. Taken from a quarry in western Pennsylvania, the stone mimics the rich variety of texture, colors and patterns of the sandstone walls in the Capitol Rotunda. That stone was originally painted white in 1826 under a 96-foot-high wood and copper dome.

This Week – Ongoing Work – 5/23/05 through 5/27/05

CVC and East Front Plaza:

- Workers continue to install mechanical, electrical and plumbing systems, erect masonry block work, place concrete and install finish stone.
- Sheetrock and plaster work have begun in the food services area, adjacent corridors, and air shafts in the East Front.
- Crews will place a concrete slab along the western half of the Exhibition Gallery.
- Granite paver installation will continue on the eastern half of the East Front Plaza.
- Exterior wall stonework will continue along the pedestrian ramp on the north side of the CVC entrance zone.
- Installation of air handling units will continue.
- A plaster wall mock-up will be completed in the lower level and will serve as the model for plaster work throughout the CVC.

East Front Extension

- Crews will continue installing mechanical systems related to the elevators on the south side of this zone.
- Fireproofing will continue on the fourth floor in this zone.



Pre-cast concrete sections are in place along 40 percent of the East Capitol Street utility tunnel.

East Capitol Street Utility Tunnel

- Excavation of the trench between First Street and Second Street is complete and a base concrete slab is in place. Crews will continue to place the pre-cast concrete tunnel sections, which now occupy 40% of the trench.
- First Street continues to be constricted to clear the way for utility work and the placement of a temporary bridge across First Street at its intersection with East Capitol Street. One lane of traffic will continue to be maintained in each direction at all times. Pedestrian access is available across East Capitol on the west side of First Street.
- Electronic message boards will be situated this week to alert motorists of the upcoming traffic pattern changes to occur June 1, 2005, on Second Street NE/SE between Constitution Avenue and Independence Avenue.

Next Week – 5/30/04 – 6/03/05

CVC and East Front Plaza Work

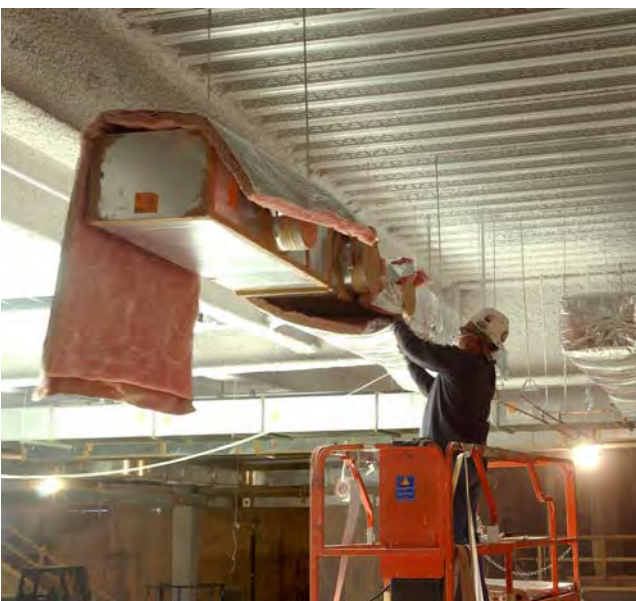
- Crews will continue to install ductwork and piping for all heating, cooling, supply, waste water, fire protection, and electrical systems; build mechanical spaces, place concrete, erect blockwork, and install finish stone.
- Sheetrock and plaster work will continue in the food services area and air shafts.
- Workers will continue placing the granite pavers on the East Plaza in the eastern half of the CVC site. Exterior wall stone installation will continue along the north side of the CVC entrance zone.

East Front Extension

- Crews will continue to install mechanical systems and utilities, and continue elevator work. Fireproofing of steel structural elements will continue inside the East Front Extension.



Blockwork continues to rise along the south wall of the Congressional Auditorium.



A worker installs insulation around air duct in the Great Hall.

East Capitol Street Utility Tunnel

- **Beginning Wednesday, June 1, 2005, Second Street NE/SE between Constitution Avenue and Independence Avenue will be temporarily restricted to one lane.** The single lane will accommodate **southbound traffic only**, while northbound traffic will be detoured to Third Street NE/SE, which is already a northbound-only street. The lane restriction is necessary to allow Capitol Visitor Center construction crews to perform utility work at the intersection of East Capitol Street and Second Street. Two-way traffic flow along Second Street NE/SE is expected to return to normal at the end of June following a four-week construction period in that zone. Pedestrian and disabled access around the work zone will be maintained along the east side of Second Street.
- Installation of pre-cast concrete sections will continue. Lane constrictions and pedestrian detours along First Street NE/SE will continue for several months.



United States Capitol Visitor Center Weekly Construction Summary



Prepared by the Capitol Visitor Center Project Office, Architect of the Capitol

May 30, 2005



Above is an aerial view of the Capitol and East Capitol grounds taken Thursday, May 26, 2005. Most of the work on the CVC is occurring below the roof deck on all three levels of the facility. Above ground, crews continue to install granite pavers and place concrete for the historic landscape features (white areas in center of photo). Stone crews continue to set granite blocks on the retaining wall along the north pedestrian ramp (foreground right).

This Week – Ongoing Work – 5/30/05 through 6/03/05

CVC and East Front Plaza:

- Workers continue to install mechanical, electrical and plumbing systems, erect masonry block work, place concrete and install finish stone.
- Sheetrock and plaster work will continue in the food services area, adjacent corridors, and air shafts in the East Front.
- Crews will complete the last concrete placement in the Exhibition Gallery.
- Granite paver installation will continue on the eastern half of the East Front Plaza.
- Exterior wall stonework will continue along the pedestrian ramp on the north side of the CVC entrance zone.
- Installation of air handling units (AHU) will continue. All 23 AHU's for the CVC are on site.
- A plaster wall mock-up has been completed in the lower level and will be reviewed by the project architect this week.

East Front Extension

- Crews will continue installing mechanical systems related to the elevators on the south side of this zone.
- Fireproofing will continue on the fourth floor in this zone.

East Capitol Street Utility Tunnel

- Excavation of the trench between First Street and Second Street is complete and a base concrete slab is in place. Crews will continue to place the pre-cast concrete tunnel sections, which now occupy 85% of the trench.
- First Street continues to be constricted to clear the way for utility work in this zone and the placement of a temporary bridge across First Street at its intersection with East Capitol Street. One lane of traffic will continue to be maintained in each direction at all times. Pedestrian access is available across East Capitol on the west side of First Street.



A worker helps guide a steel beam into place inside the Congressional Auditorium.

- **Beginning Wednesday, June 1, 2005, Second Street NE/SE between Constitution Avenue and Independence Avenue will be temporarily restricted to one lane.** The single lane will accommodate **southbound traffic only**, while northbound traffic will be detoured to Third Street NE/SE, which is already a northbound-only street. The lane restriction is necessary to allow Capitol Visitor Center construction crews to perform utility work at the intersection of East Capitol Street and Second Street. Two-way traffic flow along Second Street NE/SE is expected to return to normal at the end of June following a four-week construction period in that zone. Pedestrian and disabled access around the work zone will be maintained along the east side of Second Street.

Next Week – 6/06/05 – 6/10/05

CVC and East Front Plaza Work

- Crews will continue to install ductwork and piping for all heating, cooling, supply, waste water, fire protection, and electrical systems, build mechanical spaces, place concrete, erect blockwork, and install finish stone.
- Sheetrock and plaster work will continue in the food services area and air shafts.
- Workers will continue placing the granite pavers on the East Plaza in the eastern half of the CVC site. Exterior wall stone installation will continue along the north side of the CVC entrance zone.



Architect of the Capitol Alan Hantman describes the CVC design to his predecessor, George White (center), during a recent visit to the project site. Mr. White had conceived of the visitor center in the late 1980's and was excited to see that the "CVC has become a reality." Accompanying Mr. White (far right) is Dan Hanlon, former Director of Engineering for the Architect of the Capitol.

East Front Extension

- Crews will continue to install mechanical systems and utilities, and continue elevator work. Fireproofing of steel structural elements is expected to begin on the third floor inside the East Front Extension.

East Capitol Street Utility Tunnel

- Installation of pre-cast concrete sections is expected to be completed. Lane constrictions and pedestrian detours along First Street NE/SE will continue for several months.

If you have any questions about the Capitol Visitor Center project, please contact Tom Fontana, Communications Officer, at (202) 228-1310, or by e-mail at tfontana@ao.gov. You can read this document and previous editions on the CVC web site at www.aoc.gov.



United States Capitol Visitor Center Weekly Construction Summary



Prepared by the Capitol Visitor Center Project Office, Architect of the Capitol

June 6, 2005



Stone masons install sandstone to the south wall in the Great Hall. Overall, stone work constitutes \$35 million of the Sequence 2 contract, which includes installation of mechanical, electrical and plumbing systems, interior fit-out and finishes, and exterior stone and landscaping work.

This Week – Ongoing Work – 6/06/05 through 6/10/05

CVC and East Front Plaza:

- Workers continue to install mechanical, electrical and plumbing systems, erect masonry block work, place concrete and install finish stone.
- Sheetrock and plaster work will continue in the food services area, adjacent corridors, and air shafts in the East Front.
- Granite paver installation will continue on the eastern half of the East Front Plaza.
- Exterior wall stonework will continue along the pedestrian ramp on the north side of the CVC entrance zone.
- Installation of air handling units (AHU) will continue. All 23 AHU's for the CVC are on site.
- Crews have completed all concrete placements in the Exhibition Gallery.
- Stone crews will continue installing stone to the walls and columns inside the Great Hall.

East Front Extension

- Crews will continue installing mechanical systems related to the elevators on the south side of this zone.
- Fireproofing will continue on the fourth floor in this zone and may begin in some areas on the third floor.



Inside one of the CVC's two orientation theaters, a worker aligns a steel support rod inside the blockwork of an interior column.

East Capitol Street Utility Tunnel

- Crews are expected to complete placement of the pre-cast concrete tunnel sections.
- First Street continues to be constricted to clear the way for utility work in this zone. One lane of traffic will continue to be maintained in each direction at all times. Pedestrian access is available across East Capitol on the west side of First Street.
- Second Street NE/SE between Constitution Avenue and Independence Avenue will continue to be temporarily restricted to one lane for southbound traffic only, while northbound traffic will be detoured to Third Street NE/SE. The lane restriction is necessary to allow CVC construction crews to perform utility work at the intersection of East Capitol Street and Second Street. Two-way traffic flow along Second Street NE/SE is expected to return to normal at the end of June. Pedestrian and disabled access will be maintained along the east side of Second Street.

Next Week – 6/13/05 – 6/17/05

CVC and East Front Plaza Work

- Crews will continue to install ductwork and piping for all heating, cooling, supply, waste water, fire protection, and electrical systems, build mechanical spaces, place concrete, erect blockwork, and install finish stone.
- Sheetrock and plaster work will continue in the food services area and air shafts.
- Workers will continue placing the granite pavers on the East Plaza in the eastern half of the CVC site. Exterior wall stone installation will continue along the north side of the CVC entrance zone.

East Front Extension

- Crews will continue to install mechanical systems and utilities, and continue elevator work. Fireproofing of steel structural elements is expected to continue on the third floor inside the East Front Extension.

East Capitol Street Utility Tunnel

- Installation of pre-cast concrete sections is expected to be completed. Lane constrictions and pedestrian detours along First Street NE/SE will continue for several months.
- Second Street NE/SE between Constitution Avenue and Independence Avenue will continue to be temporarily restricted to one lane for southbound traffic only to allow CVC crews to perform utility work at the intersection of East Capitol Street and Second Street.

Clockwise from right: A crew works on a freshly placed concrete slab in a corridor near the Congressional Auditorium; (bottom) stone masons secure blocks of granite to the retaining wall along the north pedestrian ramp that leads to the CVC entrance; (below) a pipe-fitter cuts a water line on the upper level of the CVC. In the background is the central staircase connecting the CVC to the Capitol. Escalators will flank either side of the staircase.





Clockwise from top: A view of the East Front Plaza from the Capitol Dome. The two large skylights in the center of the photo will remain open to accommodate the lowering of materials from the plaza level to the lower level of the CVC. Later this summer, workers will install the glass panels for the skylights; (middle right) a worker assembles a scaffold that will be used to assemble a masonry block wall inside the Great Hall; (bottom right) workers secure pre-cast concrete tunnel sections in the utility tunnel that will eventually house the primary chilled water and steam lines that will feed the CVC; (above) an electrician connects a light fixture on the south side of the Food Service area.

If you have any questions about the Capitol Visitor Center project, please contact Tom Fontana, Communications Officer, at (202) 228-1310, or by e-mail at fontana@aac.gov. You can read this document and previous editions on the CVC web site at www.aac.gov.



United States Capitol Visitor Center Weekly Construction Summary



Prepared by the Capitol Visitor Center Project Office, Architect of the Capitol

June 20, 2005



Stone masons install historic base stone that will support one of two ornamental fountains in the center of the East Front Plaza. Before CVC construction began, all of the historic fountains, lanterns, seat walls and other features were removed one piece at a time and were carefully catalogued, refurbished and stored in stone yards awaiting their re-installation in their original locations. All of the historic elements, including the Capitol's entire landscape scheme, were designed in 1874 by the then renowned landscape architect, Frederick Law Olmsted, who had gained great prominence after the implementation of his design for Central Park in New York City in the 1850s.

This Week – Ongoing Work – 6/20/05 through 6/24/05

CVC and East Front Plaza:

- Workers continue to install mechanical, electrical and plumbing systems, erect masonry block work and metal stud walls, place concrete, install finish stone, and apply plaster to interior corridors.
- Interior stud wall erection, sheetrock and plaster work will continue in the food services area and adjacent corridors. A concrete topping slab has been placed over more than two thirds of the food service area floor space.
- Stone masons will continue installation of original base stone for the historic lanterns and fountains in the center of the East Front Plaza.
- Exterior wall stonework will continue along the pedestrian ramp on the south side of the CVC entrance zone. Crews have completed stone installation on approximately 75 percent of the north wall.
- Inside the Great Hall, stone crews will continue installing finish stone to the masonry block walls and sandstone is in place up to a height of 20 feet along the east wall of the south Orientation Theater. Also, the last of eight interior block columns is nearing completion at the south end of the Hall.



An electrician installs wiring inside the CVC.

East Front Extension

- Fireproofing continues inside the East Front Extension and has been completed on the first floor and fourth floors and in the transition zone between the Capitol and the CVC.
- Crews will continue installing mechanical systems related to the elevators on the south side of this zone.



A Sequence 2 worker applies a fireproofing material to a steel column inside the East Front Extension.

East Capitol Street Utility Tunnel

- Crews have completed placement of all of the pre-cast concrete tunnel sections except for 10 units at the eastern end of the tunnel. The sections have been capped and a gravel bed is now in place over most of the tunnel.
- First Street continues to be constricted to clear the way for utility work in this zone. One lane of traffic will continue to be maintained in each direction at all times. Pedestrian access is available on the west side of First Street.
- Second Street NE/SE, between Constitution Avenue and Independence Avenue, will continue to be temporarily restricted to one lane for southbound traffic only, while northbound traffic will be detoured to Third Street NE/SE. The lane restriction is necessary to allow CVC construction crews to perform utility work at the intersection of East Capitol Street and Second Street. Pedestrian and disabled access will be maintained along the east side of Second Street.

Next Week – 6/27/05 – 7/01/05

CVC and East Front Plaza Work

- Crews will continue to install ductwork and piping for all heating, cooling, supply, waste water, fire protection, and electrical systems; build mechanical spaces, place concrete, erect blockwork and metal stud walls, and install finish stone.
- Erection of metal studwalls and sheetrock and plaster work will continue in the food services area.
- Workers will continue placing stone for historic lanterns and fountains in the center of the East Front Plaza. Exterior wall stone installation will continue along the south side of the CVC entrance zone.



At left, a stone mason places a concrete masonry block to an upper wall inside the Congressional Auditorium. The facility will accommodate up to 450 people and will provide state-of-the-art audio/visual capabilities for presentations and briefings.

East Front Extension

- Crews will continue to install mechanical systems and utilities, and continue elevator work. Fireproofing of steel structural elements is expected to continue on the second and third floors inside the East Front Extension.

East Capitol Street Utility Tunnel

- Installation of pre-cast concrete sections is expected to be completed. Lane constrictions and pedestrian detours along First Street NE/SE will continue for several months.
- Second Street NE/SE, between Constitution Avenue and Independence Avenue, will continue to be temporarily restricted to one lane for southbound traffic only to allow CVC crews to perform utility work at the intersection of East Capitol Street and Second Street.



United States Capitol Visitor Center Weekly Construction Summary



Prepared by the Capitol Visitor Center Project Office, Architect of the Capitol

June 27, 2005



Workers install metal framework that will help support a portion of the ceiling grid inside the CVC food services area.

This Week – Ongoing Work – 6/27/05 through 7/01/05

CVC and East Front Plaza:

- Workers continue to install mechanical, electrical and plumbing systems, erect masonry block work and metal stud walls, place concrete, install finish stone, and apply plaster to interior corridors.
- Interior stud wall erection, sheetrock and plaster work will continue in the food services area and adjacent corridors. A concrete topping slab has been completed for the food service area floor space.
- Stone masons will continue installation of the original stone elements for the historic lanterns and fountains in the center of the East Front Plaza.
- Exterior wall stonework will continue along the pedestrian ramp on the south side of the CVC entrance zone. Crews have completed stone installation on approximately 80 percent of the north wall.
- Inside the Great Hall, stone crews will continue installing finish stone to the masonry block walls. Also, all eight interior block columns have been completed.

East Front Extension

- Fireproofing is complete inside the East Front Extension.
- Crews will continue installing mechanical systems related to the elevators on the south side of this zone.

East Capitol Street Utility Tunnel

- Crews have completed placement of all of the pre-cast concrete tunnel sections except for 10 units at the eastern end of the tunnel. The sections have been capped and gravel has been placed along the sides of the tunnel.
- First Street continues to be constricted to clear the way for utility work in this zone. One lane of traffic will continue to be maintained in each direction at all times. Pedestrian access is available on the west side of First Street.
- Second Street NE/SE, between Constitution Avenue and Independence Avenue, will continue to be temporarily restricted to one lane for southbound traffic only, while northbound traffic will be detoured to Third Street NE/SE. The lane restriction is necessary to allow CVC construction crews to perform utility work at the intersection of East Capitol Street and Second Street. Pedestrian and disabled access will be maintained along the east side of Second Street.



Stone masons set a granite block from a quarry in Culpeper, VA., to the south-side retaining wall within the CVC entrance zone. The “split-face” cut of the granite is intended to mimic the Capitol’s historic perimeter retaining walls designed by Frederick Law Olmsted in 1874.

Next Week – 7/04/05 – 7/08/05

CVC and East Front Plaza Work

- Crews will continue to install ductwork and piping for all heating, cooling, supply, waste water, fire protection, and electrical systems; build mechanical spaces, place concrete, erect blockwork and metal stud walls, and install finish stone.
- Erection of metal studwalls and plaster work will continue in the food services area.
- Workers will continue placing stone for historic lanterns and fountains in the center of the East Front Plaza. Exterior wall stone installation will continue along the south side of the CVC entrance zone.

East Front Extension

- Crews will continue to install mechanical systems and utilities, and continue elevator work.

East Capitol Street Utility Tunnel

- Utility work will continue at First and Second Streets at the connection points with the new utility tunnel. Lane constrictions and pedestrian detours along First Street NE/SE will continue for several months.
- Second Street NE/SE, between Constitution Avenue and Independence Avenue, will continue to be temporarily restricted to one lane for southbound traffic only to allow CVC crews to perform utility work at the intersection of East Capitol Street and Second Street.

If you have any questions about the Capitol Visitor Center project, please contact Tom Fontana, Communications Officer, at (202) 228-1310, or by e-mail at tfontana@ocg.gov. You can read this document and previous editions on the CVC web site at www.ocg.gov.



United States Capitol Visitor Center Weekly Construction Summary



Prepared by the Capitol Visitor Center Project Office, Architect of the Capitol

July 5, 2005



Masons place a granite stone block for one of eight stone benches along the East Capitol Street Extension. Like most of the East Front Plaza, this area had served as a parking lot before construction began. When work is completed, the East Capitol Street Extension will become a grand central pedestrian promenade much the way landscape architect Frederick Law Olmsted intended in his plan of 1874.

This Week – Ongoing Work – 7/04/05 through 7/08/05

CVC and East Front Plaza:

- Workers continue to install mechanical, electrical and plumbing systems, erect masonry block work and metal stud walls, place concrete, install finish stone, and apply plaster to interior corridors.
- Interior stud wall erection, sheetrock and plaster work will continue in the food services area and adjacent corridors. A concrete topping slab has been completed for the food service area floor space.
- Stone masons have completed installation of the base stone for the historic lanterns and fountains in the center of the East Front Plaza. Masons have also begun assembling stone benches along the East Capitol Street Extension.
- Exterior wall stonework will continue along the pedestrian ramp on the south side of the CVC entrance zone. Crews have completed stone installation on approximately 80 percent of the north wall.
- Inside the Great Hall, stone crews will continue installing finish stone to the masonry block walls.

East Front Extension

- Fireproofing is complete inside the East Front Extension.
- Crews will continue installing mechanical systems related to the elevators on the south side of this zone.



A pipefitter assembles a portion of the plumbing configuration in one of the CVC's 26 restrooms, which include 10 family restrooms.

East Capitol Street Utility Tunnel

- First Street continues to be constricted to clear the way for utility work in this zone. One lane of traffic will continue to be maintained in each direction at all times. Pedestrian access is available on the west side of First Street.
- Second Street NE/SE, between Constitution Avenue and Independence Avenue, will continue to be temporarily restricted to one lane for southbound traffic only. Barring any other unforeseen conditions, **two-way traffic along Second Street is expected to be restored on Monday, July 11.**

Next Week – 7/11/05 – 7/15/05

CVC and East Front Plaza Work

- Crews will continue to install ductwork and piping for all heating, cooling, supply, waste water, fire protection, and electrical systems; build mechanical spaces, place concrete, erect blockwork and metal stud walls, and install finish stone.
- Erection of metal stud walls and plaster work will continue in the food services area and adjacent corridors
- Workers will continue placing stone for historic lanterns and fountains in the center of the East Front Plaza, and bench stone along the East Capitol Street Extension. Exterior wall stone installation will continue along the south side of the CVC entrance zone.

East Front Extension

- Crews will continue to install mechanical systems and utilities, and continue elevator work.

East Capitol Street Utility Tunnel

- Utility work will continue at First and Second Streets at the connection points with the new utility tunnel. Lane constrictions and pedestrian detours along First Street NE/SE will continue for several months.
- Two-way traffic is expected to return along Second Street NE/SE on Monday, July 11.

If you have any questions about the Capitol Visitor Center project, please contact Tom Fontana, Communications Officer, at (202) 228-1310, or by e-mail at fontana@aac.gov. You can read this document and previous editions on the CVC web site at www.aac.gov.



United States Capitol Visitor Center Weekly Construction Summary



Prepared by the Capitol Visitor Center Project Office, Architect of the Capitol

July 11, 2005



Sandstone rises nearly 30 feet along the south walls of the Great Hall. An information desk will be situated in front of the wall at left.

This Week – Ongoing Work – 7/11/05 through 7/15/05

CVC and East Front Plaza:

- Workers continue to install mechanical, electrical and plumbing systems, erect masonry block work and metal stud walls, place concrete, install finish stone, and apply plaster to interior corridors.
- Interior stud wall erection, sheetrock and plaster work will continue in the food services area and adjacent corridors. A concrete topping slab has been completed for the food service area floor space.
- Stone masons have completed installation of the base stone for the historic lanterns and fountains in the center of the East Front Plaza. Masons will continue assembling stone benches along the East Capitol Street Extension.
- Exterior wall stonework will continue along the pedestrian ramp on the south side of the CVC entrance zone. Crews have completed stone installation on approximately 90 percent of the north wall.
- Inside the Great Hall, stone crews will continue installing finish stone to the masonry block walls on the north side.
- The Sequence 1 contractor, Centex Construction Co., has removed its project trailer from the site.
- All 20 air handling units are in place, clearing the way for installation of adjacent piping and support steel.

East Front Extension

- Fireproofing is complete inside the East Front Extension.
- Crews will continue installing mechanical systems related to the elevators on the south side of this zone.



A stone mason applies grout between granite blocks on the retaining wall along the north pedestrian ramp that leads to the CVC entrance.

East Capitol Street Utility Tunnel

- Two-way traffic has been restored along Second Street NE/SE, between Constitution Ave. and Independence Ave.
- First Street continues to be constricted to clear the way for utility work in this zone. One lane of traffic will continue to be maintained in each direction at all times. Pedestrian access is available on the west side of First Street.

Next Week – 7/18/05 – 7/22/05

CVC and East Front Plaza Work

- Crews will continue to install ductwork and piping for all heating, cooling, supply, waste water, fire protection, and electrical systems; build mechanical spaces, place concrete, erect blockwork and metal stud walls, and install finish stone.
- Erection of metal stud walls and plaster work will continue in the food services area and adjacent corridors.
- Exterior wall stone installation will continue along the south side of the CVC entrance zone and stone installation will begin on the steps at the north side of the CVC entrance (photo at right).



A worker sets dowels in the steps near the north entrance to the CVC. The dowels will help support and anchor the granite blocks that will be positioned on the steps.

East Front Extension

- Crews will continue to install mechanical systems and utilities, and continue elevator work.

East Capitol Street Utility Tunnel

- Utility work and temporary bridge construction will continue at First Street at the connection point with the new utility tunnel. Lane constrictions and pedestrian detours along First Street NE/SE will continue for several months.

If you have any questions about the Capitol Visitor Center project, please contact Tom Fontana, Communications Officer, at (202) 228-1310, or by e-mail at fontana@oc.gov. You can read this document and previous editions on the CVC web site at www.oc.gov.



United States Capitol Visitor Center Weekly Construction Summary



Prepared by the Capitol Visitor Center Project Office, Architect of the Capitol

July 18, 2005



A worker wraps CVC air duct with insulation. In all, 20 large and sophisticated air handling units will control air flow throughout the CVC.

This Week – Ongoing Work – 7/18/05 through 7/22/05

CVC and East Front Plaza:

- Workers continue to install mechanical, electrical and plumbing systems, erect masonry block work and metal stud walls, place concrete, install finish stone, and apply plaster to interior corridors.
- Interior stud wall erection, sheetrock and plaster work will continue in the food services area and adjacent corridors. A concrete topping slab has been completed for the food service area floor space.
- Masons will continue assembling stone benches along the East Capitol Street Extension.
- Exterior wall stonework will continue along the pedestrian ramp on the south side of the CVC entrance zone. Crews have completed stone installation on approximately 90 percent of the north wall.
- Inside the Great Hall, stone crews will continue installing finish stone to the masonry block walls on the north side.
- Installation of piping and support steel continues adjacent to the CVC's 20 air handling units.

East Front Extension

- Fireproofing is complete inside the East Front Extension.
- Crews will continue installing mechanical systems related to the elevators on the south side of this zone.

East Capitol Street Utility Tunnel

- First Street continues to be constricted to clear the way for utility work in this zone. One lane of traffic will continue to be maintained in each direction at all times. Pedestrian access is available on the west side of First Street.

Next Week – 7/25/05 – 7/29/05

CVC and East Front Plaza Work

- Crews will continue to install ductwork and piping for all heating, cooling, supply, waste water, fire protection, and electrical systems; build mechanical spaces, place concrete, erect blockwork and metal stud walls, and install finish stone.
- Erection of metal stud walls and plaster work will continue in the food services area and adjacent corridors.
- Exterior wall stone installation will continue along the south side of the CVC entrance zone and stone installation will begin on the steps at the north side of the CVC entrance (photo at right).



Workers maneuver a section of air duct into place in the CVC service level.

East Front Extension

- Crews will continue to install mechanical systems and utilities, and continue elevator work.

East Capitol Street Utility Tunnel

- Utility work and temporary bridge construction will continue at First Street at the connection point with the new utility tunnel. Lane constrictions and pedestrian detours along First Street NE/SE will continue for several months.



Plaster work continues to progress in the food services area and in the corridors near the Congressional Auditorium (above).



A worker sets marble tile to a wall inside a CVC restroom. Each of the CVC restrooms will be accessible for persons with disabilities.

If you have any questions about the Capitol Visitor Center project, please contact Tom Fontana, Communications Officer, at (202) 228-1310, or by e-mail at tfontana@oc.gov. You can read this document and previous editions on the CVC web site at www.oc.gov.



United States Capitol Visitor Center Weekly Construction Summary



Prepared by the Capitol Visitor Center Project Office, Architect of the Capitol

August 8, 2005



House: On the East Front Plaza near the House wing, preliminary work has begun on the construction of an underground tunnel that will connect the House wing to the Capitol Visitor Center. Above, a back-hoe is used to excavate a pit for a new manhole – part of the utility relocation work necessary in this work zone.



Senate: The asphalt for the temporary Senate Plaza parking lot in front of the Senate wing is being demolished to clear the way for plaza restoration activities, including installation of granite pavers and historic elements, and to restore the Senate triangle, a landscaped area that had been removed for the construction of the CVC truck tunnel.

This Week – Ongoing Work – 8/08/05 through 8/12/05

CVC and East Front Plaza:

- Workers continue to install mechanical, electrical and plumbing systems, erect masonry block work and metal stud walls, place concrete, install finish stone, and apply plaster to interior corridors.
- Interior metal stud framing for the walls and ceiling is substantially complete in the food services areas and framing crews are now in the Congressional Auditorium.
- Exterior wall stonework will continue along the pedestrian ramp on the south side of the CVC entrance zone. Crews will begin installing the cap stone along the top of the north pedestrian wall.
- Stone crews will continue installing finish stone to the masonry block walls on the north and east ends of the Great Hall.
- Stone installation will continue inside the south Orientation Theater and layout has begun in the north Orientation Theater.
- Installation of piping and support steel continues adjacent to the CVC's 20 air handling units.
- Masons have completed installation of the stone benches along the East Capitol Street Extension.
- Construction of a small underground tunnel that will connect the House wing directly to the Capitol Visitor Center will continue adjacent to the House Steps and House Carriageway. Signs have been posted on the fencing to identify this work, which includes some utility relocation. Access will be maintained at all times to the House Carriageway Member and Staff Entrance, the South Door Entrance and the House Steps. Member parking will not be affected.
- Demolition of the Senate Plaza parking lot has begun and will continue through the recess. The temporary parking lot on the Senate Plaza will no longer be available. This restriction will clear the way for Capitol Visitor Center construction crews to complete East Plaza activities, including installation of granite pavers and historic elements, and to restore the Senate triangle, a landscaped area that had been removed for the construction of the CVC truck tunnel. On September 6, 2005, following the recess, vehicle access through the Senate Carriageway will become available for Member drop-off. Member drop-off locations on the Senate Plaza will change occasionally through mid-fall 2005 to accommodate the execution of adjacent construction activities. Pedestrian access will be maintained at all times to the North Door Entrance and the Senate Carriageway Member and Staff Entrance.



A CVC crew places concrete around the large skylight on the north side of the East Front Plaza. The slab will be waterproofed and will support a slowly-moving pool of water that will be surrounded by an 18-inch seat wall. The skylight glass will be in place later this fall.

East Front Extension

- Crews will continue installation of mechanical, electrical and plumbing systems.

East Capitol Street Utility Tunnel

- First Street continues to be constricted to clear the way for construction of a temporary bridge in this zone. One lane of traffic will be maintained in each direction at all times. The sidewalk along the west side of First Street NE/SE (Capitol side) has been closed for the bridge construction. Access for pedestrians and persons with disabilities is available on the east side of First Street (along the Supreme Court and Library of Congress).
- Pile installation will continue at the east end of the tunnel near its connection to existing utilities at Second Street. Excavation at the east end of the tunnel (near First Street) is nearing completion.

Next Week – 8/15/05 – 8/19/05

CVC and East Front Plaza Work

- Crews will continue to install ductwork and piping for all heating, cooling, supply, waste water, fire protection, and electrical systems; build mechanical spaces, install cable trays, place concrete, erect blockwork and metal stud walls, and install finish stone in areas on all three levels of the CVC.
- Exterior wall stone installation will continue along the south side of the CVC entrance zone and stone installation will continue on the steps at the north side of the CVC entrance.
- Construction of a small underground tunnel that will connect the House wing directly to the Capitol Visitor Center will continue adjacent to the House Steps and House Carriageway.
- Demolition and restoration activities will continue in the temporary Senate Plaza parking lot.

East Front Extension

- Crews will continue to install mechanical, electrical and plumbing systems.

East Capitol Street Utility Tunnel

- Construction of a temporary bridge will continue at First Street over the new utility tunnel. Lane constrictions and pedestrian detours along First Street NE/SE will continue for several months. Motorists are urged to proceed with caution and pedestrians should obey all sidewalk detour signs through the work zone.

If you have any questions about the Capitol Visitor Center project, please contact Tom Fontana, Communications Officer, at (202) 228-1310, or by e-mail at fontana@oc.gov. You can read this document and previous editions on the CVC web site at www.oc.gov.



United States Capitol Visitor Center Weekly Construction Summary



Prepared by the Capitol Visitor Center Project Office, Architect of the Capitol

August 15, 2005



In the middle floor of House Expansion Space, crews install a wire mesh over insulation board prior to placing a concrete topping slab.

This Week – Ongoing Work – 8/15/05 through 8/19/05

CVC and East Front Plaza:

- Workers continue to install mechanical, electrical and plumbing systems, erect masonry block work and metal stud walls, place concrete, install finish stone, and apply plaster to interior corridors.
- Interior metal stud framing for the walls and ceiling is substantially complete in the food services areas and framing crews will begin work in the Congressional Auditorium.
- Exterior wall stonework will continue along the pedestrian ramp on the south side of the CVC entrance zone.
- Stone crews will continue installing finish stone to the masonry block walls on the north ends of the Great Hall.
- Stone installation will continue inside the south Orientation Theater and layout has begun in the north Orientation Theater.
- Construction of a small underground tunnel that will connect the House wing directly to the Capitol Visitor Center will continue adjacent to the House Steps and House Carriageway. Access will be maintained at all times to the House Carriageway Member and Staff Entrance, the South Door Entrance and the House Steps. Member parking will not be affected.
- Demolition of the Senate Plaza parking lot will continue through the recess. This restriction will clear the way for Capitol Visitor Center construction crews to complete East Plaza activities, including installation of granite pavers and historic elements, and to restore the Senate triangle, a landscaped area that had been removed for the construction of the CVC truck tunnel. On September 6, 2005, following the recess, vehicle access through the Senate Carriageway will become available for Member drop-off. Pedestrian access will be maintained at all times to the North Door Entrance and the Senate Carriageway Member and Staff Entrance.



At the north end of the CVC's Great Hall, workers assemble a scaffold that will be used by stone masons to set sandstone on 30-foot-high concrete masonry block walls. Stone installation is also continuing in both of the 250-seat Orientation Theaters that lie just west of the Great Hall.

East Front Extension

- Crews will continue installation of mechanical, electrical and plumbing systems in the lower level of the Capitol.

East Capitol Street Utility Tunnel

- First Street continues to be constricted to clear the way for construction of a temporary bridge in this zone. One lane of traffic is being maintained in each direction at all times. The sidewalk along the west side of First Street NE/SE (Capitol side) has been closed for the bridge construction. Access for pedestrians and persons with disabilities is available on the east side of First Street (along the Supreme Court and Library of Congress).
- Pile installation will continue at the east end of the tunnel near its connection to existing utilities at Second Street. Excavation at the east end of the tunnel (near First Street) is nearing completion.

Next Week – 8/22/05 – 8/26/05

CVC and East Front Plaza Work

- Crews will continue to install ductwork and piping for all heating, cooling, supply, waste water, fire protection, and electrical systems; build mechanical spaces, install cable trays, place concrete, erect blockwork and metal stud walls, and install finish stone in areas on all three levels of the CVC.
- Exterior wall stone installation will continue along the south side of the CVC entrance zone and stone installation will begin on the steps at the north side of the CVC entrance.
- Construction of a small underground tunnel that will connect the House wing directly to the Capitol Visitor Center will continue adjacent to the House Steps and House Carriageway.
- Demolition and restoration activities will continue in the temporary Senate Plaza parking lot.

East Front Extension

- Crews will continue to install mechanical, electrical and plumbing systems.

East Capitol Street Utility Tunnel

Construction of a temporary bridge will continue at First Street over the new utility tunnel. Lane constrictions and pedestrian detours along First Street NE/SE will continue for several months. Motorists are urged to proceed with caution and pedestrians should obey all sidewalk detour signs through the work zone.

If you have any questions about the Capitol Visitor Center project, please contact Tom Fontana, Communications Officer, at (202) 228-1310, or by e-mail at tfontana@ocg.gov. You can read this document and previous editions on the CVC web site at www.ocg.gov.



United States Capitol Visitor Center Weekly Construction Summary



Prepared by the Capitol Visitor Center Project Office, Architect of the Capitol

August 22, 2005



Stone masons install a sandstone block to the screen wall inside the Capitol Visitor Center's south Orientation Theater.

This Week – Ongoing Work – 8/22/05 through 8/26/05

CVC and East Front Plaza:

- Workers continue to install mechanical, electrical and plumbing systems, erect masonry block work and metal stud walls, place concrete, install finish stone, and apply plaster to interior corridors.
- Stone crews will continue installing finish stone to the masonry block walls on the north side of the Great Hall and sandstone blocks now rise close to 30 feet on the north wall of the Hall.
- Stone installation will continue inside the two Orientation Theaters (south Orientation Theater depicted above).
- Construction of a small underground tunnel that will connect the House wing directly to the Capitol Visitor Center will continue adjacent to the House Steps and House Carriageway. Access will be maintained at all times to the House Carriageway Member and Staff Entrance, the South Door Entrance and the House Steps. Member parking will not be affected.
- Demolition of the Senate Plaza parking lot is 99 percent complete. Measurements have been taken of the existing concrete slab below the asphalt and the slab is now being evaluated for its suitability to receive granite pavers and other Plaza restoration elements. On September 6, 2005, following the recess, vehicle access through the Senate Carriageway will become available for Member drop-off. During this work pedestrian access will be maintained at all times to the North Door Entrance and the Senate Carriageway Member and Staff Entrance.
- **Northwest Drive will be closed to vehicles this coming weekend, August 27-28, 2005**, to allow a paint crew to re-stripe parking spaces along the length of the street. Northwest Drive will be available for parking on Monday, August 29, 2005.

East Capitol Street Utility Tunnel

- First Street continues to be constricted to clear the way for construction of a temporary bridge in this zone. One lane of traffic is being maintained in each direction at all times. The sidewalk along the west side of First Street NE/SE (Capitol side) has been closed for the bridge construction. Access for pedestrians and persons with disabilities is available on the east side of First Street (along the Supreme Court and Library of Congress).
- Pile installation will continue at the east end of the tunnel near its connection to existing utilities at Second Street. Excavation at the east end of the tunnel (near First Street) is nearing completion.

Next Week – 8/29/05 – 9/02/05

CVC and East Front Plaza Work

- Crews will continue to install ductwork and piping for all heating, cooling, supply, waste water, fire protection, and electrical systems; build mechanical spaces, install cable trays, place concrete, erect blockwork and metal stud walls, and install finish stone in areas on all three levels of the CVC.
- Exterior wall stone installation will continue along the south side of the CVC entrance zone and stone installation may begin on the monumental steps at the north side of the CVC entrance.
- Crews may begin erecting an exterior hoist (elevator for transport of materials) just north of the East Front Center Steps in front of the original Senate Wing. The hoist will be used to transport masonry blocks and other construction materials to all levels of the East Front Extension, which serves as the primary transition zone between the Capitol and the Visitor Center.
- Construction of a small underground tunnel that will connect the House wing directly to the Capitol Visitor Center will continue adjacent to the House Steps and House Carriageway. Access will be maintained at all times to the House Carriageway Member and Staff Entrance, the South Door Entrance and the House Steps.
- Restoration of the Senate Plaza will continue pending the review of the existing concrete slab that has been revealed following the completion of asphalt demolition of the former temporary Senate Parking Lot. Pedestrian access will be maintained at all times to the North Door Entrance and the Senate Carriageway Member and Staff Entrance.

East Front Extension

- Installation of concrete masonry blocks may begin on two levels in the East Front Extension.

East Capitol Street Utility Tunnel

- Construction may be completed of a temporary bridge over the new utility tunnel at First Street. Lane constrictions and pedestrian detours along First Street NE/SE will continue for several months. Motorists are urged to proceed with caution and pedestrians should obey all sidewalk detour signs through the work zone.



Workers inside the Congressional Auditorium pull telecommunications wires through openings that lie below the seating area within the facility. When completed, the Auditorium will feature state-of-the-art audio/visual technology and can serve as an alternate House or Senate Chamber if needed.



United States Capitol Visitor Center Weekly Construction Summary



Prepared by the Capitol Visitor Center Project Office, Architect of the Capitol

August 29, 2005



In the center of the East Front Plaza, a stone mason positions a granite block that is part of the base of one of two historic fountains.

This Week – Ongoing Work – 8/29/05 through 9/02/05

CVC and East Front Plaza:

- Workers continue to install mechanical, electrical and plumbing systems, erect masonry block work and metal stud walls, place concrete, install finish stone, and apply plaster to interior spaces.
- Stone crews will continue installing finish stone to the masonry block walls on the north side of the Great Hall.
- Stone installation will continue inside both Orientation Theaters.
- The installation of marble tile has been completed in two restrooms, which will serve as mock-ups for other restrooms.
- Construction of a small underground tunnel that will connect the House wing directly to the Capitol Visitor Center will continue adjacent to the House Steps and House Carriageway. Access will be maintained at all times to the House Carriageway Member and Staff Entrance, the South Door Entrance and the House Steps.
- Demolition of the Senate Plaza parking lot is complete as well as the installation of a new fire hydrant near the Senate Steps. Work will begin to partially restore the deck and place a concrete slab that will accommodate vehicular traffic. On September 6, 2005, following the recess, vehicle access through the Senate Carriageway will become available for Member drop-off. During this work pedestrian access will be maintained at all times to the North Door Entrance and the Senate Carriageway Member and Staff Entrance.
- On the north grounds of the Capitol, Northwest Drive will be closed Friday, September 2, to allow a paint crew to re-stripe parking spaces along the length of the street. Northwest Drive will be available for parking when Members and staff return on Tuesday, September 6. Wet weather last weekend required this work to be rescheduled.



Near the Great Hall, a technician works on the installation of one of the CVC's 23 elevators. The facility also includes six escalators.

East Capitol Street Utility Tunnel

- First Street continues to be constricted to clear the way for construction of a temporary bridge in this zone. One lane of traffic is being maintained in each direction at all times. The sidewalk along the west side of First Street NE/SE (Capitol side) has been closed for the bridge construction. Access for pedestrians and persons with disabilities is available on the east side of First Street (along the Supreme Court and Library of Congress).
- Pile installation will continue at the east end of the tunnel near its connection to existing utilities at Second Street. Excavation at the east end of the tunnel is nearing completion.

Next Week – 9/05/05 – 9/09/05

CVC and East Front Plaza Work

- Crews will continue to install ductwork and piping for all heating, cooling, supply, waste water, fire protection, and electrical systems; build mechanical spaces, install cable trays, place concrete, erect blockwork and metal stud walls, and install finish stone in areas on all three levels of the CVC.
- Crews may begin erecting an exterior hoist (elevator for transport of materials) just north of the East Front Center Steps in front of the original Senate Wing. The hoist will be used to transport masonry blocks and other construction materials to all levels of the East Front Extension, which serves as the primary transition zone between the Capitol and the Visitor Center.
- Construction of a small underground tunnel that will connect the House wing directly to the Capitol Visitor Center will continue adjacent to the House Steps and House Carriageway. Access will be maintained at all times to the House Carriageway Member and Staff Entrance, the South Door Entrance and the House Steps.
- Partial restoration of the Senate Plaza will continue and a concrete slab will be in place to accommodate vehicle access when Members and staff return on September 6, 2005. Please note that parking will no longer be available on the Senate Plaza and construction activity will continue to occur in this zone through next summer.

If you have any questions about the Capitol Visitor Center project, please contact Tom Fontana, Communications Officer, at (202) 228-1310, or by e-mail at tfontana@oc.gov. You can read this document and previous editions on the CVC web site at www.oc.gov.



United States Capitol Visitor Center Weekly Construction Summary



Prepared by the Capitol Visitor Center Project Office, Architect of the Capitol

September 6, 2005



Below a skylight opening in the Great Hall, a stone mason checks the alignment of sandstone blocks that have been set on the east wall.

This Week – Ongoing Work – 9/05/05 through 9/09/05

CVC and East Front Plaza:

- Workers continue to install mechanical, electrical and plumbing systems, erect masonry block work and metal stud walls, place concrete, install finish stone, and apply plaster to interior spaces.
- Stone crews will continue installing sandstone on the west wall of the Great Hall. Stone installation is 95% complete on the north, south and east walls.
- Stone installation will continue inside both Orientation Theaters.
- The installation of marble tile has been completed in two restrooms, which will serve as mock-ups for other restrooms.
- Construction of a small underground tunnel that will connect the House wing directly to the Capitol Visitor Center will continue adjacent to the House Steps and House Carriageway. Access will be maintained at all times to the House Carriageway Member and Staff Entrance, the South Door Entrance and the House Steps.
- Demolition of the Senate Plaza parking lot is complete as well as the installation of a new fire hydrant near the Senate Steps. A new concrete slab has been placed and vehicle access through the Senate Carriageway is available for Member drop-off. While work continues to restore the Plaza and historic elements, pedestrian access will be maintained at all times to the North Door Entrance and the Senate Carriageway Member and Staff Entrance.
- Re-striping of Northwest Drive was completed during the past weekend and the Drive is available for staff parking.
- Crews continue layout activities and installation of underslab conduit and the floor topping slabs on the lower levels of the House and Senate Expansion Space. Installation of ductwork continues on the lower level of the House Expansion Space.



Workers prepare plumbing fixtures and conduit for a water feature near the stairs along the southeast corner of the Great Hall.

East Capitol Street Utility Tunnel

- Work on East Capitol Street has been halted through Wednesday, September 7, 2005, to minimize noise and traffic disruptions during lying-in-repose ceremonies and funeral services for the late Chief Justice William Rehnquist.
- First Street continues to be constricted to clear the way for construction of a temporary bridge in this zone. One lane of traffic is being maintained in each direction at all times. The sidewalk along the west side of First Street NE/SE (Capitol side) has been closed for the bridge construction. Access for pedestrians and persons with disabilities is available on the east side of First Street (along the Supreme Court and Library of Congress).
- Utility connections to steam and chilled water lines at Second Street have been completed. Crews will begin installation of pipe within the new tunnel.

Next Week – 9/12/05 – 9/16/05

CVC and East Front Plaza Work

- Crews will continue to install ductwork and piping for all heating, cooling, supply, waste water, fire protection, and electrical systems; build mechanical spaces, install cable trays, place concrete, erect blockwork and metal stud walls, and install finish stone in areas on all three levels of the CVC.
- Crews may begin erecting an exterior hoist (elevator for transport of materials) just north of the East Front Center Steps in front of the original Senate Wing. The hoist will be used to transport masonry blocks and other construction materials to all levels of the East Front Extension, which serves as the primary transition zone between the Capitol and the Visitor Center.
- Construction of a small underground tunnel that will connect the House wing directly to the Capitol Visitor Center will continue adjacent to the House Steps and House Carriageway. Access will be maintained at all times to the House Carriageway Member and Staff Entrance, the South Door Entrance and the House Steps.
- Restoration of the Senate Plaza will continue. Vehicle access through the Senate Carriageway and to the Senate Steps is available for Member drop-off.
- Installation of pipe will continue inside the new utility tunnel along East Capitol Street between First and Second Streets.

If you have any questions about the Capitol Visitor Center Project, please contact Tom Fontana, Project Communications Officer at (202) 228-1310 or by e-mail at fontana@aac.gov. For this and previous editions of the Weekly Construction Summary, visit our web site at www.aoc.gov (click on the "Capitol Visitor Center" link).



United States Capitol Visitor Center Weekly Construction Summary



Prepared by the Capitol Visitor Center Project Office, Architect of the Capitol

September 12, 2005



A worker installs insulation around a water pipe connection point in a corridor that lies between the Great Hall and House expansion space.

This Week – Ongoing Work – 9/12/05 through 9/16/05

CVC and East Front Plaza:

- Workers continue to install mechanical, electrical and plumbing systems, erect masonry block work and metal stud walls, place concrete, install finish stone, and apply plaster to interior spaces.
- Stone crews will continue installing sandstone on the west wall of the Great Hall and inside both Orientation Theaters.
- The installation of marble tile has been completed in two restrooms, which will serve as mock-ups for other restrooms.
- Historic preservation crews continue to install stonework for the historic fountains and lanterns on the plaza.
- Construction of a small underground tunnel that will connect the House wing directly to the Capitol Visitor Center will continue adjacent to the House Steps and House Carriageway. Access will be maintained at all times to the House Carriageway Member and Staff Entrance, the South Door Entrance and the House Steps.
- Curb installation may begin this week near the Senate Steps and along the sidewalk that leads to Northwest Drive. While work continues to restore the Senate Plaza and historic elements, pedestrian access will be maintained at all times to the North Door Entrance and the Senate Carriageway Member and Staff Entrance.
- Crews continue layout activities and installation of underslab conduit and the floor topping slabs on the lower levels of the House and Senate Expansion Space. Installation of ductwork continues on the lower level of the House Expansion Space.

East Capitol Street Utility Tunnel

- First Street continues to be constricted at the intersection with East Capitol Street to allow utility work in this zone. A temporary bridge has been constructed over the work zone at the intersection and one lane of traffic is being maintained in each direction at all times. Access for pedestrians and persons with disabilities is available on the east side of First Street (along the Supreme Court and Library of Congress).
- Utility connections to steam and chilled water lines at Second Street are ongoing. All pre-cast concrete sections are now in place and final excavation work is ongoing near Second Street.
- Crews have begun the installation of 40-foot lengths of utility pipe within the new tunnel.

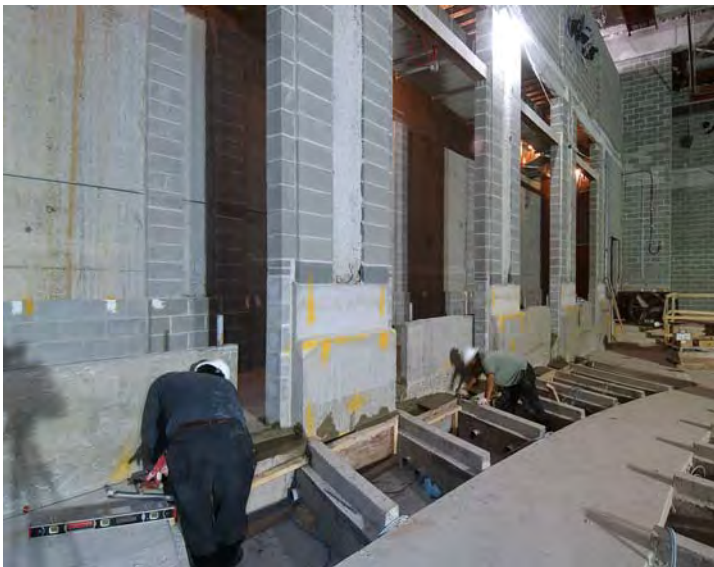
Next Week – 9/19/05 – 9/23/05

CVC and East Front Plaza Work

- Crews will continue to install ductwork and piping for all heating, cooling, supply, waste water, fire protection, and electrical systems; build mechanical spaces, install cable trays, place concrete, erect blockwork and metal stud walls, and install finish stone in areas on all three levels of the facility.
- Crews may begin erecting an exterior hoist (elevator for transport of materials) just south of the East Front Center Steps in front of the original House Wing. The hoist will be used to transport masonry blocks and other construction materials to all levels of the East Front Extension, which serves as the primary transition zone between the Capitol and the Visitor Center.
- Construction of a small underground tunnel that will connect the House wing directly to the Capitol Visitor Center will continue adjacent to the House Steps and House Carriageway. Access will be maintained at all times to the House Carriageway Member and Staff Entrance, the South Door Entrance and the House Steps.
- Restoration of the Senate Plaza will continue with the installation of curb stones. Vehicle access through the Senate Carriageway and to the Senate Steps is available for Member drop-off.
- Installation of pipe will continue inside the new utility tunnel along East Capitol Street between First and Second Streets.



A worker installs sheetrock to a portion of the ceiling in the food service area on the lower level of the CVC. When completed, the dining space will be able to accommodate approximately 550 people.



Inside the Congressional Auditorium, workers level off small patches of concrete to prepare the space for installation of finish stone.



A stone mason sets a block of sandstone to the east wall of the CVC's Great Hall. Nearly 75 percent of the stone is in place inside the Hall.



United States Capitol Visitor Center Weekly Construction Summary



Prepared by the Capitol Visitor Center Project Office, Architect of the Capitol

September 19, 2005



On the middle level of House expansion space, sparks fly as a worker cuts through steel studs that will be used to frame interior walls.

This Week – Ongoing Work – 9/19/05 through 9/23/05

CVC and East Front Plaza:

- Workers continue to install mechanical, electrical and plumbing systems, erect masonry block work and metal stud walls, place concrete, install finish stone, and apply plaster to interior spaces.
- Stone crews will continue installing sandstone on the west wall of the Great Hall and inside both Orientation Theaters.
- Stone layout work is complete in the Congressional Auditorium and stone installation will continue in several areas.
- Historic preservation crews continue to install stonework for the historic fountains and lanterns on the plaza.
- Construction of a small underground tunnel that will connect the House wing directly to the Capitol Visitor Center is temporarily suspended as work to address foundation issues is ongoing. Access will be maintained at all times to the House Carriageway Member and Staff Entrance, the South Door Entrance and the House Steps.
- Curb installation will begin next week near the Senate Steps and along the sidewalk that leads to Northwest Drive. Work has been temporarily suspended this week as designers establish the proper elevations for the Senate triangle. While work continues to restore the Senate Plaza and historic elements, pedestrian access will be maintained at all times to the North Door Entrance and the Senate Carriageway Member and Staff Entrance.
- Crews continue layout activities and installation of underslab conduit, ductwork and the floor topping slabs on the lower levels of the House and Senate Expansion Space.

East Capitol Street Utility Tunnel

- First Street continues to be constricted at the intersection with East Capitol Street to allow utility work in this zone. A temporary bridge has been constructed over the work zone at the intersection and one lane of traffic is being maintained in each direction at all times. Access for pedestrians and persons with disabilities is available on the east side of First Street (along the Supreme Court and Library of Congress).
- Utility connections to steam and chilled water lines at Second Street are ongoing. All pre-cast concrete sections are now in place and final excavation work is ongoing near Second Street.
- Crews will begin the installation of 40-foot lengths of utility pipe within the new tunnel.



Workers position a steel pipe support inside a new utility tunnel for the CVC. The tunnel will accommodate new chilled water and steam lines.

Next Week – 9/26/05 – 9/30/05

CVC and East Front Plaza Work

- Crews will continue to install ductwork and piping for all heating, cooling, supply, waste water, fire protection, and electrical systems; build mechanical spaces, install cable trays, place concrete, erect blockwork and metal stud walls, and install finish stone in areas on all three levels of the facility.
- Crews may begin erecting an exterior hoist (elevator for transport of materials) just south of the East Front Center Steps in front of the original House Wing. The hoist will be used to transport mechanical equipment to the upper levels of the Capitol.
- Construction of a small underground tunnel that will connect the House wing directly to the Capitol Visitor Center may resume near the House Steps and House Carriageway. Access will be maintained at all times to the House Carriageway Member and Staff Entrance, the South Door Entrance and the House Steps.
- Restoration of the Senate Plaza is expected to resume with the installation of curb stones. Vehicle access through the Senate Carriageway and to the Senate Steps is available for Member drop-off.
- Installation of pipe will continue inside the new utility tunnel along East Capitol Street between First and Second Streets.



Stone masons establish guidelines for layout of stone in the Congressional Auditorium.



Stone masons set Tennessee Valley marble along the base of a stairwell near the south Orientation Theater.



United States Capitol Visitor Center Weekly Construction Summary



Prepared by the Capitol Visitor Center Project Office, Architect of the Capitol

September 26, 2005



A worker helps guide a 40-foot steel pipe into place inside the CVC utility tunnel. Work on the tunnel will continue through the winter.

This Week – Ongoing Work – 9/26/05 through 9/30/05

CVC and East Front Plaza:

- Workers continue to install mechanical, electrical and plumbing systems, erect masonry block work and metal stud walls, place concrete, install finish stone, and apply plaster to interior spaces.
- Stone crews will continue installing sandstone on the west wall of the Great Hall and inside both Orientation Theaters.
- Stone layout work is complete in the Congressional Auditorium and stone installation is ongoing at the base of the walls.
- Historic preservation crews continue to install stonework for the historic fountains and lanterns on the plaza.
- Construction of a small underground tunnel that will connect the House wing directly to the Capitol Visitor Center has resumed and excavation has reached a depth of eight feet below the House Carriageway. Access will be maintained at all times to the House Carriageway Member and Staff Entrance, the South Door Entrance and the House Steps.
- Curb installation has begun near the Senate Steps and along the west sidewalk that leads to Northwest Drive. Work had been temporarily suspended as designers established the proper elevations for the Senate triangle. While work continues to restore the Senate Plaza and historic elements, pedestrian access will be maintained at all times to the North Door Entrance and the Senate Carriageway Member and Staff Entrance.
- Crews continue layout activities and installation of underslab conduit, ductwork and the floor topping slabs in the the House and Senate Expansion Space. Metal studwalls are now up in much of the middle level of the House expansion space surrounding a new committee hearing room.
- Materials will begin to arrive for a temporary hoist that will be erected adjacent to the Capitol near the Memorial Door (just south of the center steps). The hoist will be used to transport new mechanical equipment to the upper level of the Capitol. Access and emergency egress through the Memorial Door will be maintained at all times.



A construction crew places concrete for the floor topping slab on the upper level of the Senate expansion space.

East Capitol Street Utility Tunnel

- First Street continues to be constricted at the intersection with East Capitol Street to allow utility work in this zone.
- Utility connections to steam and chilled water lines at Second Street are ongoing. Most of the pre-cast concrete sections are now in place and crews will continue to install utility pipe within the new tunnel.

Next Week – 10/03/05 – 10/07/05

CVC and East Front Plaza Work

- Crews will continue to install ductwork and piping for all heating, cooling, supply, waste water, fire protection, and electrical systems; build mechanical spaces, install cable trays, place concrete, erect blockwork and metal stud walls, and install finish stone in areas on all three levels of the facility.
- Construction of a small underground tunnel that will connect the House wing directly to the Capitol Visitor Center will continue in the House Carriageway. Access will be maintained at all times to the House Carriageway Member and Staff Entrance, the South Door Entrance and the House Steps.
- Restoration of the Senate Plaza will continue with the installation of curb stones and granite pavers. Vehicle access through the Senate Carriageway and to the Senate Steps is available for Member drop-off.
- Installation of pipe will continue inside the new utility tunnel along East Capitol Street between First and Second Streets. Related utility tie-in work will continue at the intersections of East Capitol Street with First and Second Streets.



Stone masons guide a piece of stone into place for one of six historic lanterns in the center of the East Front Plaza near the CVC entrances.



United States Capitol Visitor Center Weekly Construction Summary



Prepared by the Capitol Visitor Center Project Office, Architect of the Capitol

September 26, 2005



A worker helps guide a 40-foot steel pipe into place inside the CVC utility tunnel. Work on the tunnel will continue through the winter.

This Week – Ongoing Work – 9/26/05 through 9/30/05

CVC and East Front Plaza:

- Workers continue to install mechanical, electrical and plumbing systems, erect masonry block work and metal stud walls, place concrete, install finish stone, and apply plaster to interior spaces.
- Stone crews will continue installing sandstone on the west wall of the Great Hall and inside both Orientation Theaters.
- Stone layout work is complete in the Congressional Auditorium and stone installation is ongoing at the base of the walls.
- Historic preservation crews continue to install stonework for the historic fountains and lanterns on the plaza.
- Construction of a small underground tunnel that will connect the House wing directly to the Capitol Visitor Center has resumed and excavation has reached a depth of eight feet below the House Carriageway. Access will be maintained at all times to the House Carriageway Member and Staff Entrance, the South Door Entrance and the House Steps.
- Curb installation has begun near the Senate Steps and along the west sidewalk that leads to Northwest Drive. Work had been temporarily suspended as designers established the proper elevations for the Senate triangle. While work continues to restore the Senate Plaza and historic elements, pedestrian access will be maintained at all times to the North Door Entrance and the Senate Carriageway Member and Staff Entrance.
- Crews continue layout activities and installation of underslab conduit, ductwork and the floor topping slabs in the the House and Senate Expansion Space. Metal studwalls are now up in much of the middle level of the House expansion space surrounding a new committee hearing room.
- Materials will begin to arrive for a temporary hoist that will be erected adjacent to the Capitol near the Memorial Door (just south of the center steps). The hoist will be used to transport new mechanical equipment to the upper level of the Capitol. Access and emergency egress through the Memorial Door will be maintained at all times.



A construction crew places concrete for the floor topping slab on the upper level of the Senate expansion space.

East Capitol Street Utility Tunnel

- First Street continues to be constricted at the intersection with East Capitol Street to allow utility work in this zone.
- Utility connections to steam and chilled water lines at Second Street are ongoing. Most of the pre-cast concrete sections are now in place and crews will continue to install utility pipe within the new tunnel.

Next Week – 10/03/05 – 10/07/05

CVC and East Front Plaza Work

- Crews will continue to install ductwork and piping for all heating, cooling, supply, waste water, fire protection, and electrical systems; build mechanical spaces, install cable trays, place concrete, erect blockwork and metal stud walls, and install finish stone in areas on all three levels of the facility.
- Construction of a small underground tunnel that will connect the House wing directly to the Capitol Visitor Center will continue in the House Carriageway. Access will be maintained at all times to the House Carriageway Member and Staff Entrance, the South Door Entrance and the House Steps.
- Restoration of the Senate Plaza will continue with the installation of curb stones and granite pavers. Vehicle access through the Senate Carriageway and to the Senate Steps is available for Member drop-off.
- Installation of pipe will continue inside the new utility tunnel along East Capitol Street between First and Second Streets. Related utility tie-in work will continue at the intersections of East Capitol Street with First and Second Streets.



Stone masons guide a piece of stone into place for one of six historic lanterns in the center of the East Front Plaza near the CVC entrances.



United States Capitol Visitor Center Weekly Construction Summary



Prepared by the Capitol Visitor Center Project Office, Architect of the Capitol

October 3, 2005



Stone work is nearly complete on the walls of the Great Hall and crews will soon begin assembling scaffolds across the floor of the Hall so that ceiling work can begin. Inset: A mason checks the level of a sandstone block at the base of a column inside the Great Hall.

This Week – Ongoing Work – 10/03/05 through 10/07/05

CVC and East Front Plaza:

- Workers continue to install mechanical, electrical and plumbing systems, erect masonry block work and metal stud walls, place concrete, install finish stone, and apply plaster to interior spaces.
- Stone crews will continue installing sandstone on the west wall and columns of the Great Hall, inside both orientation theaters and in the Congressional Auditorium. About 26 mason teams are expected to be on site by the end of next week.
- Historic preservation crews continue to install stonework for the historic fountains and lanterns on the plaza.
- Construction of a small underground tunnel that will connect the House wing directly to the Capitol Visitor Center continues inside the House Carriageway. Access will be maintained at all times to the House Carriageway Member and Staff Entrance, the South Door Entrance and the House Steps.
- Curb installation continues near the Senate Steps and along the west sidewalk that leads to Northwest Drive. Pedestrian access will be maintained at all times to the North Door Entrance and the Senate Carriageway Member and Staff Entrance while work continues to restore the Senate Plaza and historic elements.
- Masons continue to install granite pavers on the East Front Plaza adjacent to the historic fountain on the north side.
- Crews continue installation of mechanical, electrical and plumbing systems, underslab conduit, ductwork and floor topping slabs in the House and Senate Expansion Space. Metal stud walls are now up in much of the middle level of the House expansion space surrounding a new committee hearing room.

- Crews will erect a temporary hoist adjacent to the Capitol near the Memorial Door (just south of the center steps). The hoist will be used to transport new mechanical equipment to the upper level of the Capitol. Access and emergency egress through the Memorial Door will be maintained at all times.

East Capitol Street Utility Tunnel

- First Street continues to be constricted at the intersection with East Capitol Street to allow utility work in this zone.
- Utility connections to steam and chilled water lines at Second Street are ongoing. Most of the pre-cast concrete sections are now in place and crews will continue to install utility pipe within the new tunnel.

Next Week – 10/10/05 – 10/14/05

CVC and East Front Plaza Work

- Crews will continue to install ductwork and piping for all heating, cooling, supply, waste water, fire protection, and electrical systems; build mechanical spaces, install cable trays, place concrete, erect blockwork and metal stud walls, and install finish stone in areas on the upper and middle levels of the facility.
- Construction of a small underground tunnel that will connect the House wing directly to the Capitol Visitor Center will continue in the House Carriageway. Access will be maintained at all times to the House Carriageway Member and Staff Entrance, the South Door Entrance and the House Steps.
- Restoration of the Senate Plaza will continue with the installation of curb stones and granite pavers. Vehicle access through the Senate Carriageway and to the Senate Steps is available for Member drop-off.
- Installation of pipe will continue inside the new utility tunnel along East Capitol Street between First and Second Streets. Related utility tie-in work will continue at the intersections of East Capitol Street with First and Second Streets.



On a scaffold, a mason crew secures stone to the columns inside the north orientation theater as sunlight from an adjacent skylight illuminates the area. Inset: A mason sets a small sandstone block to the door framework at the upper level of the north orientation theater.



United States Capitol Visitor Center Weekly Construction Summary



Prepared by the Capitol Visitor Center Project Office, Architect of the Capitol

October 11, 2005



Stone masons lay granite paving stones near the Senate Steps. Work on the East Front Plaza near both the Senate and House wings will continue well into next year as crews rebuild historic retaining walls and restore the landscaped areas near the north and south entrances.

This Week – Ongoing Work – 10/10/05 through 10/14/05

CVC and East Front Plaza:

- Workers continue to install mechanical, electrical and plumbing systems, erect masonry block work and metal stud walls, place concrete, install finish stone, and apply plaster to interior spaces.
- Stone crews will continue installing sandstone inside both orientation theaters and in the Congressional Auditorium.
- Historic preservation crews continue to install stonework for the historic fountains and lanterns on the plaza.
- Construction of a small underground tunnel that will connect the House wing directly to the Capitol Visitor Center will resume inside the House Carriageway with excavation activity. Access will be maintained at all times to the House Carriageway Member and Staff Entrance, the South Door Entrance and the House Steps.
- Installation of curb stones and granite pavers continues near the Senate Steps and along the west sidewalk that leads to Northwest Drive. Pedestrian access will be maintained at all times to the North Door Entrance and the Senate Carriageway Member and Staff Entrance while work continues to restore the Senate Plaza and historic elements.
- Crews continue installation of mechanical, electrical and plumbing systems, underslab conduit, ductwork and floor topping slabs in the House and Senate Expansion Space. Metal stud walls and drywall are now up in much of the middle level of the House expansion space surrounding a new committee hearing room.
- On the Service Level, all of the major equipment is now installed and crews are making the final duct connections to the air handling units and fans, piping connections to equipment, and final electrical connections.

East Capitol Street Utility Tunnel

- First Street continues to be constricted at the intersection with East Capitol Street to allow utility work in this zone.
- Utility connections to steam and chilled water lines at Second Street are ongoing. Most of the pre-cast concrete sections are now in place and crews will continue to install utility pipe within the new tunnel.
- New concrete (cast-in-place) will be placed beginning this week at the utility connection points at First and Second Streets.

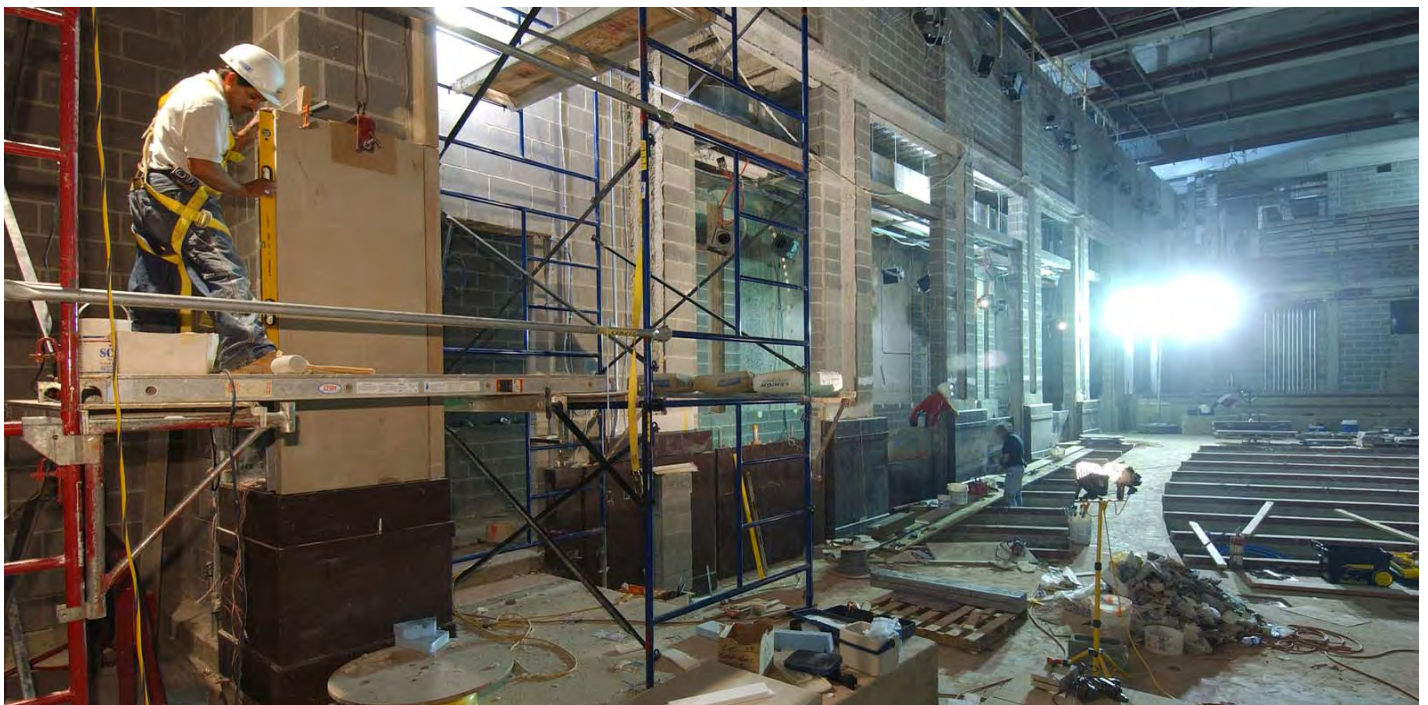


A worker in the CVC utility tunnel welds together two 40-foot-long steel water pipes.

Next Week – 10/17/05 – 10/21/05

CVC and East Front Plaza Work

- Crews will continue to install ductwork and piping for all heating, cooling, supply, waste water, fire protection, and electrical systems; build mechanical spaces, install cable trays, place concrete, erect blockwork and metal stud walls, and install finish stone in areas on the upper and middle levels of the facility.
- Excavation will continue in the House Carriageway as part of the construction of a small underground tunnel that will connect the House wing directly to the Capitol Visitor Center will continue in the House Carriageway.
- Restoration of the Senate Plaza will continue with the installation of curb stones and granite pavers. Vehicle access through the Senate Carriageway and to the Senate Steps is available for Member drop-off.
- Installation of pipe will continue inside the new utility tunnel along East Capitol Street between First and Second Streets. Related utility tie-in work and concrete placements will continue at First and Second Streets.
- Crews will continue installation of mechanical, electrical and plumbing systems, metal stud walls, drywall, under-slab conduit, ductwork and floor topping slabs in the House and Senate Expansion Space.



A mason checks the alignment of sandstone on a column inside the Congressional Auditorium. Nearly 30 percent of all the stone to be installed in the CVC will be set inside the Auditorium. Masons are also working inside both Orientation Theaters and the Great Hall.



United States Capitol Visitor Center Weekly Construction Summary



Prepared by the Capitol Visitor Center Project Office, Architect of the Capitol

October 17, 2005



CVC workers assemble scaffolding around one of 16 columns inside the Great Hall. Masons will use the scaffold to set sandstone on the 30-foot-high columns. Additional scaffolding will be assembled throughout the Great Hall in the weeks ahead to allow ceiling work to begin in November.

This Week – Ongoing Work – 10/17/05 through 10/21/05

CVC and East Front Plaza:

- Workers continue to install mechanical, electrical and plumbing systems, erect masonry block work and metal stud walls, place concrete, install finish stone, and apply plaster to interior spaces.
- Stone crews will continue installing stone inside the Great Hall, both orientation theaters and in the Congressional Auditorium.
- On the Service Level, all of the major equipment is now installed and crews are making the final duct connections to the air handling units and fans, piping connections to equipment, and final electrical connections.
- Crews continue installation of mechanical, electrical and plumbing systems, underslab conduit, ductwork and floor topping slabs in the House and Senate Expansion Space. Metal stud walls and drywall are now up in much of the middle level of the House expansion space surrounding a new committee hearing room.
- Foundation work continues below the House Carriageway as part of the effort to construct a small underground tunnel that will connect the House wing directly to House expansion space. Access will be maintained at all times to the House Carriageway Member and Staff Entrance, the South Door Entrance and the House Steps.
- Crews continue to place concrete near the Senate Steps and along the west sidewalk that leads to Northwest Drive to prepare these zone for granite paver installation. Pedestrian access will be maintained at all times to the North Door Entrance and the Senate Carriageway Member and Staff Entrance while work continues to restore the Senate Plaza and historic elements



Pipes are in place inside much of the pre-cast concrete sections of the CVC utility tunnel below East Capitol Street.

East Capitol Street Utility Tunnel

- First Street continues to be constricted at the intersection with East Capitol Street to allow for utility work in this zone. Crews also continue to install reinforcing steel at the intersection to prepare for concrete placements.
- Utility connections to steam and chilled water lines at Second Street are ongoing. All of the pre-cast concrete sections are now in place. Welding is the primary activity inside the tunnel with pipe now installed in much of the pre-cast concrete sections between First and Second Streets.
- New concrete (cast-in-place) will be placed beginning this week at the utility connection points at First and Second Streets.

Next Week – 10/24/05 – 10/28/05

CVC and East Front Plaza Work

- Crews will continue to install ductwork and piping for all heating, cooling, supply, waste water, fire protection, and electrical systems; build mechanical spaces, install cable trays, place concrete, erect blockwork and metal stud walls, and install finish stone in areas on the upper and middle levels of the facility.
- Installation of pipe will continue inside the new utility tunnel along East Capitol Street between First and Second Streets. Related utility tie-in work and concrete placements will continue at First and Second Streets.
- Crews will continue installing mechanical, electrical and plumbing systems, metal stud walls, drywall, underslab conduit, ductwork and floor topping slabs in the House and Senate Expansion Space.
- Excavation will continue in the House Carriageway as part of the construction of a small underground tunnel that will connect the House wing directly to the Capitol Visitor Center.
- Restoration of the Senate Plaza will continue with demolition activities, concrete placements and installation of granite pavers.



Workers secure a large fan unit to the floor of the CVC Service Level.



United States Capitol Visitor Center Weekly Construction Summary



Prepared by the Capitol Visitor Center Project Office, Architect of the Capitol

October 24, 2005



Stone masons raise a block of sandstone into place along one of the columns inside the Congressional Auditorium. Scaffolding, which can be seen in the background, will soon occupy most of the floor space within the facility to allow crews to begin ceiling work.

This Week – Ongoing Work – 10/24/05 through 10/28/05

CVC and East Front Plaza:

- Workers continue to install mechanical, electrical and plumbing systems, erect masonry block work and metal stud walls, place concrete, install finish stone, and apply plaster to interior spaces.
- Stone crews will continue installing stone inside the Great Hall and in the Congressional Auditorium. Meanwhile, masons have nearly completed stone installation inside both orientation theaters.
- On the Service Level, all of the major equipment is now installed and crews continue to make the final duct connections to the air handling units and fans, piping connections to equipment, and final electrical connections.
- Crews continue installation of mechanical, electrical and plumbing systems, underslab conduit, ductwork and floor topping slabs in the House and Senate Expansion Space. Metal stud walls and drywall are now up in much of the middle level of the House expansion space surrounding a new committee hearing room.
- Foundation work continues below the House Carriageway as part of the effort to construct a small underground tunnel that will connect the House wing directly to House expansion space. Access will be maintained at all times to the House Carriageway Member and Staff Entrance, the South Door Entrance and the House Steps.
- A temporary hoist has been erected just south of the Center Steps and will be used to transport mechanical equipment.
- Crews continue to place concrete in various zones on the Senate Plaza to prepare the area for granite paver installation. Pedestrian access will be maintained at all times to the North Door Entrance and the Senate Carriageway.



A stone mason (far right) sets stone to a column inside the Great Hall. Scaffolding will soon rise throughout the Hall to allow ceiling work to begin.

East Capitol Street Utility Tunnel

- First Street continues to be constricted at the intersection with East Capitol Street to allow for utility work in this zone. Crews also continue to install reinforcing steel at the intersection to prepare for concrete placements.
- Utility connections to steam and chilled water lines at Second Street are ongoing. All of the pre-cast concrete sections are now in place. Welding is the primary activity inside the tunnel with pipe now installed in much of the pre-cast concrete sections between First and Second Streets.
- Crews will continue to assemble steel reinforcing and place concrete at the utility connection points at First and Second Streets.

Next Week – 10/31/05 – 11/04/05

CVC and East Front Plaza Work

- Crews will continue to install ductwork and piping for all heating, cooling, supply, waste water, fire protection, and electrical systems; build mechanical spaces, install cable trays, place concrete, erect blockwork and metal stud walls, and install finish stone in areas on the upper and middle levels of the facility.
- Installation of pipe will continue inside the new utility tunnel along East Capitol Street between First and Second Streets. Related utility tie-in work and concrete placements will continue at First and Second Streets.
- Crews will continue installing mechanical, electrical and plumbing systems, metal stud walls, drywall, underslab conduit, ductwork and floor topping slabs in the House and Senate Expansion Space.
- Excavation and concrete placements will continue in the House Carriageway as part of the construction of a small underground tunnel that will connect the House wing directly to the Capitol Visitor Center.
- Restoration of the Senate Plaza will continue with demolition activities, concrete placements and installation of granite pavers.

If you have any questions about the Capitol Visitor Center Project, please contact Tom Fontana, Project Communications Officer at (202) 228-1310 or by e-mail at tfontana@aac.gov. For this and previous editions of the Weekly Construction Summary, visit our web site at www.aac.gov (click on the "Capitol Visitor Center" link).



United States Capitol Visitor Center Weekly Construction Summary



Prepared by the Capitol Visitor Center Project Office, Architect of the Capitol

October 31, 2005



Scaffolding rises throughout the Congressional Auditorium to provide a platform (top of photo) that will allow crews to complete ceiling work.

This Week – Ongoing Work – 10/31/05 through 11/04/05

CVC and East Front Plaza:

- Workers continue to install mechanical, electrical and plumbing systems, erect masonry block work and metal stud walls, place concrete, install finish stone, and apply plaster to interior spaces.
- Stone crews will continue installing stone inside the Great Hall and in the Congressional Auditorium. Only minor stone work remains to be completed inside both orientation theaters.
- On the Service Level, crews continue to make the final duct connections to the air handling units and fans, piping connections to equipment, and final electrical connections.
- Crews continue installation of mechanical, electrical and plumbing systems, underslab conduit, ductwork and floor topping slabs in the House and Senate Expansion Space. Metal stud walls and drywall are up in much of the middle level of the House expansion space surrounding a new committee hearing room.
- Foundation work continues below the House Carriageway as part of the effort to construct a small underground tunnel that will connect the House wing directly to House expansion space. Nine of 12 foundation pits have been completed.
- A temporary hoist has been erected just south of the Center Steps and will be used to transport mechanical equipment.
- Crews will continue to lay granite pavers in various zones on the Senate Plaza as restoration activities continue. Pedestrian access will be maintained at all times to the North Door Entrance and the Senate Carriageway.
- Masons have completed installation of the stone steps on the north side of the CVC entrance.



Stone masons position a piece of Tennessee marble into place on one of the two “modesty” walls in the south Orientation Theater.

East Capitol Street Utility Tunnel

- First Street continues to be constricted at the intersection with East Capitol Street to allow for utility work in this zone. Crews also continue to install reinforcing steel at the intersection to prepare for concrete placements.
- Utility connections to steam and chilled water lines at Second Street are ongoing. All of the pre-cast concrete sections are now in place. Welding is the primary activity inside the tunnel with pipe now installed in much of the pre-cast concrete sections between First and Second Streets.
- Work is expected to begin to relocate the temporary bridge across First Street slightly to the west of the existing bridge location. Some excavation and pile driving will be required for the new bridge.

Next Week – 11/07/05 – 11/11/05

CVC and East Front Plaza Work

- Crews will continue to install ductwork and piping for all heating, cooling, supply, waste water, fire protection, and electrical systems; build mechanical spaces, install cable trays, place concrete, erect blockwork and metal stud walls, and install finish stone in areas on the upper and middle levels of the facility.
- Installation of pipe will continue inside the new utility tunnel along East Capitol Street between First and Second Streets. Related utility tie-in work and concrete placements will continue at First and Second Streets and crews will continue work to relocate the temporary bridge over First Street to clear the way for utility work in that zone.
- Crews will continue installing mechanical, electrical and plumbing systems, metal stud walls, drywall, underslab conduit, ductwork and floor topping slabs in the House and Senate Expansion Space.
- Excavation and concrete placements will continue in the House Carrieway as part of the construction of a small underground tunnel that will connect the House wing directly to the Capitol Visitor Center.
- Restoration of the Senate Plaza will continue with concrete placements and installation of granite pavers.



United States Capitol Visitor Center Weekly Construction Summary



Prepared by the Capitol Visitor Center Project Office, Architect of the Capitol

November 7, 2005



Aerial photo of the Capitol Visitor Center project site as it appeared November 2, 2005. Approximately 170,000 8-inch-square granite paving stones have been placed across the East Front Plaza. The original Olmsted-designed lanterns and fountains can be seen partially assembled (center of the photo) while new stone benches can be seen on the East Capitol Street Extension. The historic fountains, which had been dormant since the 1970s, will become fully operational when the East Front Plaza opens to the public (see bottom-right photo on opposite page). Meanwhile, crews continue to work on the East Capitol Street utility tunnel (bottom right), which will provide chilled water and steam into the CVC.

This Week – Ongoing Work – 11/07/05 through 11/11/05

CVC and East Front Plaza:

- Workers continue to install mechanical, electrical and plumbing systems, erect masonry block work and metal stud walls, place concrete, install finish stone, and apply plaster to interior spaces.
- Stone crews will continue installing stone inside the Great Hall and the Congressional Auditorium. Only minor stone work remains to be completed inside both orientation theaters.
- On the Service Level, crews continue to make the final duct connections to the air handling units and fans, piping connections to equipment, and final electrical connections.
- Inside the House and Senate Expansion Space, crews continue to install mechanical, electrical and plumbing systems, place floor topping slabs, and erect metal stud walls and drywall.
- Masons have completed installation of the stone steps on the north side of the CVC entrance and that crew will move to the south retaining wall to resume installation of large granite blocks (from Culpeper, VA).
- Foundation work continues below the House Carriageway as part of the effort to construct a small underground tunnel that will connect the House wing directly to House expansion space. Initial foundation work to ensure the stability of the existing Carriageway has been completed and deeper excavation activity is ongoing.
- A temporary hoist just south of the Center Steps will begin to be used to transport mechanical equipment to the roof.
- Crews will continue to lay granite pavers in various zones on the Senate Plaza as restoration activities continue. Pedestrian access will be maintained at all times to the North Door Entrance and the Senate Carriageway.

East Capitol Street Utility Tunnel

- First Street continues to be constricted at the intersection with East Capitol Street to allow for utility work in this zone. A new temporary bridge is being constructed on the west side of First Street to allow crews to relocate an existing utility above and out of the way of the new utility tunnel.
- The utility connections to steam and chilled water lines at Second Street are ongoing and workers continue welding pipes inside the tunnel.
- A crew will place a concrete foundation slab in the tunnel at First Street and a new roof slab over an old book tunnel.



A stone mason trims a sandstone block to be set on a stairwell wall on the west side of the Great Hall.

Next Week – 11/14/05 – 11/18/05

CVC and East Front Plaza Work

- Crews will continue to install ductwork and piping for all heating, cooling, supply, waste water, fire protection, and electrical systems; build mechanical spaces, install cable trays, place concrete, erect blockwork and metal stud walls, and install finish stone in areas on the upper and middle levels of the facility.
- Installation of pipe will continue inside the new utility tunnel along East Capitol Street between First and Second Streets. Related utility tie-in work and concrete placements will continue at First and Second Streets and crews will continue work to relocate the temporary bridge over First Street to clear the way for utility work in that zone.
- Crews will continue installing mechanical, electrical and plumbing systems, metal stud walls, drywall, underslab conduit, ductwork and floor topping slabs in the House and Senate Expansion Space.
- Excavation will continue in the House Carriageway as part of the construction of a small underground tunnel that will connect the House wing directly to the Capitol Visitor Center.
- Restoration of the Senate Plaza will continue with concrete placements and installation of granite pavers.



Stone masons set a cap stone atop a retaining wall in the northeast quadrant of the CVC site. A bronze railing will be installed later.



A worker applies mortar between the concrete masonry blocks that will support the elliptical granite tiers of the historic Olmsted fountain.



United States Capitol Visitor Center Weekly Construction Summary



Prepared by the Capitol Visitor Center Project Office, Architect of the Capitol

November 14, 2005



Workers lower a bundle of steel rebar inside the utility tunnel below East Capitol Street at the intersection with First Street. Inset: A worker welds together a utility line connection.

This Week – Ongoing Work – 11/14/05 through 11/18/05

CVC and East Front Plaza:

- Workers continue to install mechanical, electrical and plumbing systems, erect masonry block work and metal stud walls, place concrete, install finish stone, and apply plaster to interior spaces.
- Stone crews will continue installing stone inside the Great Hall on the columns, and in the Congressional Auditorium. Only minor stone work remains to be completed inside both orientation theaters. Stonework has begun inside the Exhibition Gallery and crews are up to the fifth course of stone along the east wall of that facility.
- On the Service Level, crews continue to make the duct connections to the air handling units and fans, piping connections to equipment, and final electrical connections.
- Inside the House and Senate Expansion Space, crews continue to install mechanical, electrical and plumbing systems, place floor topping slabs, and erect metal stud walls and drywall.
- A stone crew will installation of large granite blocks on the south retaining wall.
- Foundation work continues below the House Carriageway as part of the effort to construct a small underground tunnel that will connect the House wing directly to House expansion space. Initial foundation work to ensure the stability of the existing Carriageway has been completed and deeper excavation activity is ongoing.
- A temporary hoist just south of the Center Steps is being to be used to transport mechanical equipment to the roof.
- Crews will continue to lay granite pavers in various zones on the Senate Plaza as restoration activities continue.



A stone mason sets a block of western Pennsylvania sandstone to a wall inside the Exhibition Gallery. Inset: Workers install electrical and telecommunications conduit for some of the 24 interactive computer stations that will be situated inside the Gallery.

East Capitol Street Utility Tunnel

- First Street continues to be constricted at the intersection with East Capitol Street to allow for utility work in this zone. A new temporary bridge has been constructed on the west side of First Street to allow crews to relocate an existing utility above and out of the way of the new utility tunnel.
- The utility connections to steam and chilled water lines at Second Street are ongoing and workers continue welding pipes inside the tunnel.
- Crews will continue placing concrete at the intersections with First and Second Streets. The concrete structure around an old book tunnel is complete.

Next Week – 11/21/05 – 11/25/05

CVC and East Front Plaza Work

- Crews will continue to install ductwork and piping for all heating, cooling, supply, waste water, fire protection, and electrical systems; build mechanical spaces, install cable trays, place concrete, erect blockwork and metal stud walls, and install finish stone in areas on the upper and middle levels of the facility.
- Installation of pipe will continue inside the new utility tunnel along East Capitol Street between First and Second Streets. Related utility tie-in work and concrete placements will continue at First and Second Streets and crews will continue work to relocate the temporary bridge over First Street to clear the way for utility work in that zone. Washington Gas is expected to begin relocation of an existing line that lies within the path of the new utility tunnel.
- Crews will continue installing mechanical, electrical and plumbing systems, metal stud walls, drywall, underslab conduit, ductwork and floor topping slabs in the House and Senate Expansion Space.
- A saw-cutting operation is expected to begin in the House Carriageway as part of the construction of a small underground tunnel that will connect the House wing directly to the Capitol Visitor Center. Noise levels will be closely monitored to minimize disruption to building occupants.
- Restoration of the Senate Plaza will continue with installation of granite pavers.



United States Capitol Visitor Center Weekly Construction Summary



Prepared by the Capitol Visitor Center Project Office, Architect of the Capitol

November 21, 2005



A worker lays electrical and communications conduit in the floor of the North Orientation Theater. The stone work is nearly complete inside the theater.

This Week – Ongoing Work – 11/21/05 through 11/25/05

CVC and East Front Plaza:

- Workers continue to install mechanical, electrical and plumbing systems, erect masonry block work and metal stud walls, place concrete, install finish stone, and apply plaster to interior spaces.
- Stone crews will continue installing stone inside the Great Hall on the columns and along the east walls, and in the Congressional Auditorium. Only minor stone work remains to be completed inside both orientation theaters. Stonework has begun inside the Exhibition Gallery and crews are up to the seventh course of stone along the east wall of that facility.
- On the Service Level, crews continue to make the duct connections to the air handling units and fans, piping connections to equipment, and final electrical connections.
- Inside the House and Senate Expansion Space, crews continue to install mechanical, electrical and plumbing systems, place floor topping slabs, and erect metal stud walls and drywall.
- A stone crew will continue installing granite blocks on the south retaining wall leading to the CVC entrance.
- Foundation work continues below the House Carriageway as part of the effort to construct a small underground tunnel that will connect the House wing directly to House expansion space.
- A temporary hoist just south of the Center Steps is being to be used to transport mechanical equipment to the roof.
- Crews will continue to lay granite pavers in various zones on the Senate Plaza and along the sidewalk leading to the Senate Steps as restoration activities continue.



Workers in the House expansion space position a segment of air duct into place in the ceiling of a new committee hearing room. The curving lines visible on the floor will be used to help guide the construction of the ceiling structure, which will support a series of concentric curving vaults.

East Capitol Street Utility Tunnel

- First Street continues to be constricted at the intersection with East Capitol Street to allow for utility work in this zone. Excavation near an existing gas line below First Street continues as crews prepare the zone for Washington Gas to reconfigure the gas line over the new utility tunnel.
- The utility connections to steam and chilled water lines at Second Street are ongoing and workers continue welding pipes inside the tunnel.
- Crews will continue placing concrete every other day at the intersections with First and Second Streets. The concrete structure around an old book tunnel is complete and waterproofing is occurring at this location.

Next Week – 11/28/05 – 12/02/05

CVC and East Front Plaza Work

- Crews will continue to install ductwork and piping for all heating, cooling, supply, waste water, fire protection, and electrical systems; build mechanical spaces, install cable trays, place concrete, erect blockwork and metal stud walls, and install finish stone in areas on the upper and middle levels of the facility.
- Installation of pipe will continue inside the new utility tunnel along East Capitol Street between First and Second Streets. Related utility tie-in work and concrete placements will continue at First and Second Streets. Weather permitting, Washington Gas is expected to begin relocating an existing line that lies within the path of the new utility tunnel.
- Crews will continue installing mechanical, electrical and plumbing systems, metal stud walls, drywall, underslab conduit, ductwork and floor topping slabs in the House and Senate Expansion Space.
- Demolition will continue below the House Carriageway as part of the construction of a small underground tunnel that will connect the House wing directly to the Capitol Visitor Center.
- Restoration of the Senate Plaza and the adjacent sidewalk will continue with installation of granite pavers.



United States Capitol Visitor Center Weekly Construction Summary



Prepared by the Capitol Visitor Center Project Office, Architect of the Capitol

November 28, 2005



A stone mason secures an anchor to a stairwell block wall at the west end of the Great Hall. The anchor will help support one of approximately 8,500 pieces of stone to be set inside the Hall. Upon completion of the CVC, masons will have set more than 45,000 pieces of stone.

This Week – Ongoing Work – 11/28/05 through 12/02/05

CVC and East Front Plaza:

- Workers continue to install mechanical, electrical and plumbing systems, erect masonry block work and metal stud walls, place concrete, install finish stone, and apply plaster to interior spaces.
- Stone crews will continue installing stone inside the Great Hall on the columns and along the east walls, and in the upper level of the Congressional Auditorium. Stone work is essentially complete inside both orientation theaters. Stonework continues inside the Exhibition Gallery and masons have completed setting wall stone on the northeast wall. Masons have begun setting floor stone inside the Food Service area.
- On the Service Level, crews continue to make the electrical, duct and piping connections to the air handling units, fans and other mechanical equipment.
- Inside the House and Senate Expansion Space, crews continue to install mechanical, electrical and plumbing systems, place floor topping slabs, and erect metal stud walls and drywall.
- A stone crew will continue installing granite blocks on the south retaining wall leading to the CVC entrance.
- Foundation work continues below the House Carriageway as part of the effort to construct a small underground tunnel that will connect the House wing directly to House expansion space.
- Crews will continue to lay granite pavers in various zones on the Senate Plaza and along the sidewalk leading to the Senate Steps as restoration activities continue.



Stone masons set a granite block to the north exterior wall of the Congressional Auditorium. The rough cut of the stone echoes the historic perimeter walls.

East Capitol Street Utility Tunnel

- First Street continues to be constricted at the intersection with East Capitol Street to allow for utility work in this zone. Excavation near an existing gas line below First Street continues as crews prepare the zone for Washington Gas to reconfigure the gas line over the new utility tunnel. Excavation is expected to be completed this week.
- The utility connections to steam and chilled water lines at Second Street are ongoing and workers continue welding pipes inside the tunnel. Pipe has been installed in more than 400 feet of the 750-foot tunnel.
- Crews will continue placing concrete at the intersections of First and Second Streets. The concrete structure around an old book tunnel is complete and waterproofing is now complete at this location.

Next Week – 12/05/05 – 12/09/05

CVC and East Front Plaza Work

- Crews will continue to install ductwork and piping for all heating, cooling, supply, waste water, fire protection, and electrical systems; build mechanical spaces, install cable trays, place concrete, erect blockwork and metal stud walls, and install finish stone in areas on the upper and middle levels of the facility.
- Installation of pipe will continue inside the new utility tunnel along East Capitol Street between First and Second Streets. Related utility tie-in work and concrete placements will continue at First and Second Streets. Weather permitting, Washington Gas is expected to begin relocating an existing line that lies within the path of the new utility tunnel.
- Crews will continue installing mechanical, electrical and plumbing systems, metal stud walls, drywall, underslab conduit, ductwork and floor topping slabs in the House and Senate Expansion Space.
- Demolition will continue below the House Carriageway as part of the construction of a small underground tunnel that will connect the House wing directly to the Capitol Visitor Center.
- Restoration of the Senate Plaza and the adjacent sidewalk will continue with installation of granite pavers.



United States Capitol Visitor Center Weekly Construction Summary



Prepared by the Capitol Visitor Center Project Office, Architect of the Capitol

December 5, 2005



Working within the Carriageway below the East Front center steps, a worker sets a concrete masonry block unit around a portion of the original East Front structure built between 1958 and 1962. The East Front of the Capitol was extended during that time to add 100,000 square feet to the Capitol. The central portion of that extension will serve as the primary transition zone between the Capitol and the CVC.

This Week – Ongoing Work – 12/05/05 through 12/09/05

CVC and East Front Plaza:

- Workers continue to install mechanical, electrical and plumbing systems, erect masonry block work and metal stud walls, place concrete, install finish stone, and apply plaster to interior spaces.
- Stone crews will continue installing stone inside the Great Hall on the columns and along the east walls, and in the lobby area of the Congressional Auditorium. Stone work is essentially complete inside both orientation theaters and continues inside the Exhibition Gallery. Masons have completed setting wall stone on the northeast and northwest walls and the six columns on the east side of the gallery. Overall, masons have improved on their daily average of stone installation from 125 pieces per day in October to an average of 180 per day in November.
- Crews are now installing masonry block units on the basement and Crypt levels within the East Front of the Capitol to prepare the zone for installation of stone and other finish materials.
- Workers will begin installation of mechanical elements for two 25-passenger elevators in the East Front.
- On the Service Level, crews continue to make the electrical, duct and piping connections to the air handling units, fans and other mechanical equipment.
- Inside the House and Senate Expansion Space, crews continue to install mechanical, electrical and plumbing systems, place floor topping slabs, and erect metal stud walls and drywall.
- A stone crew will continue installing granite blocks on the south retaining wall leading to the CVC entrance.

- Foundation work continues below the House Carriageway as part of the effort to construct a small underground tunnel that will connect the House wing directly to House expansion space.
- Crews will continue to lay granite pavers in various zones on the Senate Plaza and along the sidewalk leading to the Senate Steps as restoration activities continue.

East Capitol Street Utility Tunnel

- First Street continues to be constricted at the intersection with East Capitol Street to allow for utility work in this zone. Excavation near an existing gas line below First Street is complete and Washington Gas is now working in that zone to reconfigure the gas line over the new utility tunnel. This work should be completed in two weeks.
- The utility connections to steam and chilled water lines at Second Street are ongoing and workers there are assembling the formwork for the concrete walls and roof slab around the connection points. Most of the pipe is now in place within the 750-foot-long utility tunnel and welding will continue for several weeks.



Workers review mechanical drawings in the south Orientation Theater. The scaffolding in the background provides a platform for ceiling work.

Next Week – 12/12/05 – 12/16/05

CVC and East Front Plaza Work

- Crews will continue to install ductwork and piping for all heating, cooling, supply, waste water, fire protection, and electrical systems; build mechanical spaces, install cable trays, place concrete, erect blockwork and metal stud walls, and install finish stone in areas on the upper and middle levels of the facility.
- Installation and welding of pipe will continue inside the new utility tunnel along East Capitol Street between First and Second Streets. Related utility tie-in work and concrete placements will continue at First and Second Streets.
- Weather permitting, Washington Gas will complete the reconfiguration of an existing line that lies within the path of the new utility tunnel.
- Crews will continue installing mechanical, electrical and plumbing systems, metal stud walls, drywall, underslab conduit, ductwork and floor topping slabs in the House and Senate Expansion Space.
- Demolition of foundation stone will continue below the House Carriageway as part of the construction of a small underground tunnel that will connect the House wing directly to the Capitol Visitor Center.
- Masons will continue installing of granite pavers to restore the Senate Plaza and the adjacent sidewalk.



United States Capitol Visitor Center Weekly Construction Summary



Prepared by the Capitol Visitor Center Project Office, Architect of the Capitol

December 12, 2005



Waterproofing? Actually, yes. A worker uses a blowtorch to seal the tar layers of waterproofing material on the monumental steps located on the south side of the CVC entrance zone. Once the waterproofing is complete later this week, masons will begin setting the granite step stones.

This Week – Ongoing Work – 12/12/05 through 12/16/05

CVC and East Front Plaza:

- Workers continue to install mechanical, electrical and plumbing systems, erect masonry block work and metal stud walls, place concrete, install finish stone, and apply plaster to interior spaces.
- Stone crews will continue installing stone inside the Great Hall on the east-side columns and along the east walls, and in the 30-foot-high thresholds between the columns on the west side of the Hall. Other stone work continues in the corridors of the Congressional Auditorium, while several mason teams are working along the north, south and west walls in the Exhibition Gallery.
- In the orientation theaters, workers are installing the metal stud walls that will support the separate wood and acoustic fabric panels. When completed, both Orientation Theaters will feature state-of-the-art surround sound systems.
- Crews are installing masonry block units on the basement and Crypt levels within the East Front of the Capitol and around the original concrete columns to prepare the zone for installation of stone and other finish materials.
- Workers are installing mechanical systems in the East Front (ductwork and electrical conduit) and have begun installing the rails for two 25-passenger elevators on the north side of the East Front.
- On the Service Level, crews continue to make the electrical, duct and piping connections to the air handling units, fans and other mechanical equipment. Workers are installing insulation on all water lines.

- Inside the House and Senate Expansion Space, crews continue to install mechanical, electrical and plumbing systems, place floor topping slabs, and erect metal stud walls and drywall. Much of the block work and metal stud-walls are now complete on the upper level of the House Expansion space and in the middle level of the Senate space.
- A stone crew will continue installing granite blocks on the south retaining wall leading to the CVC entrance.
- Foundation work continues below the House Carriageway as part of the effort to construct a small underground tunnel that will connect the House wing directly to House expansion space.
- Crews continue to lay granite pavers in various zones on the Senate Plaza and along the sidewalk leading to the Senate Steps as restoration activities continue.



A stone mason trims a piece of sandstone at the north end of the Visitor Center Exhibition Hall.

East Capitol Street Utility Tunnel

- First Street continues to be constricted at the intersection with East Capitol Street to allow for utility work in this zone.

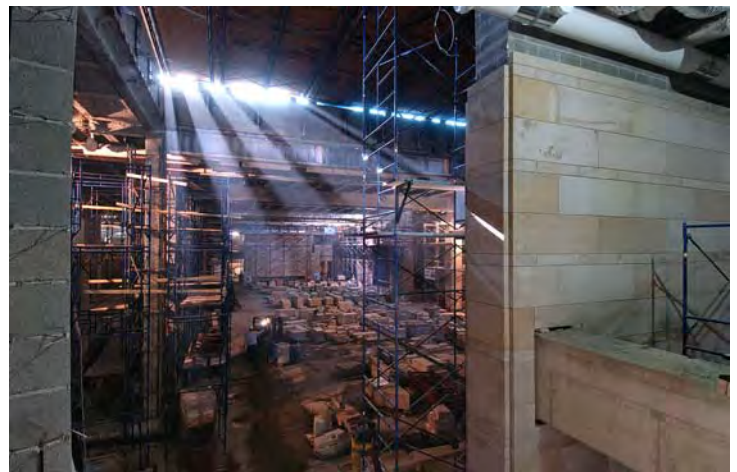
Excavation near an existing gas line below First Street is complete and Washington Gas is working in that zone to reconfigure the gas line over the new utility tunnel. This work is expected to be completed later this week.

- The utility connections to steam and chilled water lines at Second Street are ongoing and concrete placements for the walls and roof slab at Second Street around the utility connection points will occur this week. Concrete placements may occur in two weeks at First Street pending the completion of the Washington Gas work. Most of the pipe is now in place within the 750-foot-long utility tunnel and welding will continue into February.

Next Week – 12/19/05 – 12/23/05

CVC and East Front Plaza Work

- Crews will continue to install ductwork and piping for all heating, cooling, supply, waste water, fire protection, and electrical systems; build mechanical spaces, install cable trays, place concrete, erect blockwork and metal stud walls, and install finish stone in areas on the upper and middle levels of the facility.
- Installation and welding of pipe will continue inside the new utility tunnel along East Capitol Street between First and Second Streets. Related utility tie-in work and concrete placements will continue at First and Second Streets. Weather permitting, Washington Gas will complete the reconfiguration of an existing line that lies within the path of the new utility tunnel.
- Crews will continue installing mechanical, electrical and plumbing systems, metal stud walls, drywall, underslab conduit, ductwork and floor topping slabs in the House and Senate Expansion Space.
- Demolition and removal of foundation stone will continue below the House Carriageway as part of the construction of a small underground tunnel that will connect the House wing directly to the Capitol Visitor Center.
- Masons will continue installing granite pavers to restore the Senate Plaza and the adjacent sidewalk.



Sunlight peeks into the Great Hall through a gap between a temporary cover over one of two 30'x70' skylights. The sandstone wall at right lines the escalator bank on the south side of the Hall.

Clockwise from right: duct installation in the East Front; duct installation in the Senate Expansion space; metal stud wall assembly in the South Orientation Theater; plaster work in the Library of Congress Tunnel, and masonry block unit construction in the East Front.





United States Capitol Visitor Center Weekly Construction Summary



Prepared by the Capitol Visitor Center Project Office, Architect of the Capitol

December 19, 2005



Left: In a corridor on the south side of the Great Hall, stone masons set the first floor stone in the Capitol Visitor Center, a piece of Dolomite limestone from a quarry in Valders, Wisconsin. **Right:** Progress of floor stone installation two days later. Other floor stone will arrive from quarries in South Dakota, Maine, and Tennessee. Overall, close to 50,000 individual pieces of stone will be set within the Visitor Center.

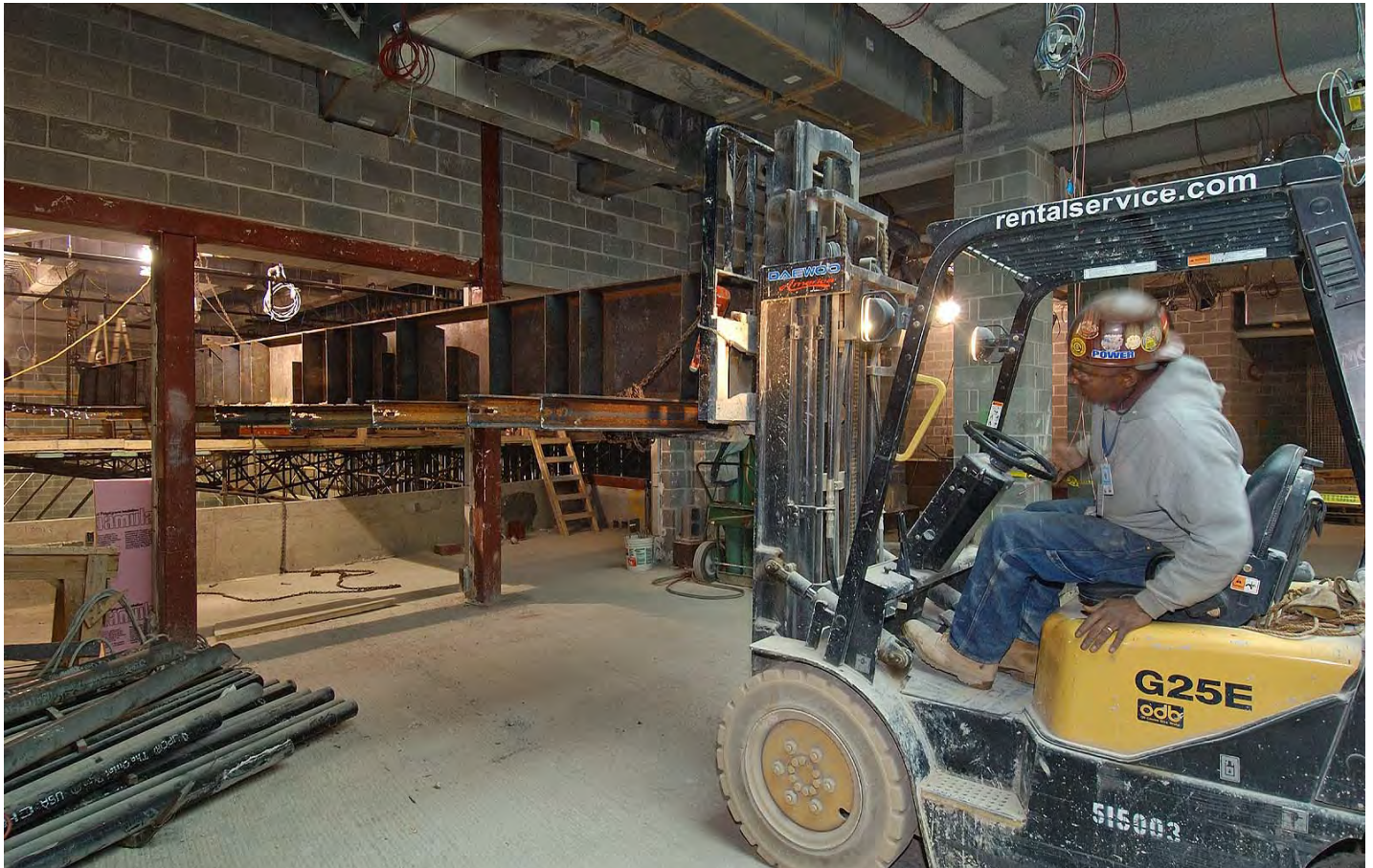
This Week – Ongoing Work – 12/19/05 through 12/23/05

CVC and East Front Plaza:

- Workers continue to install mechanical, electrical and plumbing systems, erect masonry block work and metal stud walls, place concrete, install finish stone, and apply plaster to interior spaces.
- Stone masons will continue installing floor stone in the corridor south of the Great Hall.
- Stone crews will continue installing stone inside the Great Hall on the east-side columns and along the east walls, and in the 30-foot-high thresholds between the columns on the west side of the Hall. Other stone work continues in the corridors of the Congressional Auditorium, while several mason teams are working along the north, south and west walls in the Exhibition Gallery.
- In the orientation theaters, workers are installing the metal stud walls that will support the separate wood and acoustic fabric panels. A crew has begun installing a 6,000-lb. project screen support beam in the South Theater.
- Crews continue to install masonry block units on the basement and Crypt levels within the East Front.
- Workers are installing mechanical systems in the East Front (ductwork and electrical conduit) and are continuing to install mechanical elements for two 25-passenger elevators on the north side.
- On the Service Level, crews continue to make the electrical, duct and piping connections to the air handling units, fans and other mechanical equipment. Workers are installing insulation on all water lines.
- Inside the House and Senate Expansion Space, crews continue to install mechanical, electrical and plumbing systems, place floor topping slabs, and erect metal stud walls and drywall. Much of the block work and metal stud-walls are now complete on the upper level of the House Expansion space and in the middle level of the Senate space.
- A stone crew will continue installing granite blocks on the south retaining wall leading to the CVC entrance.
- Foundation work continues below the House Carriageway as part of the effort to construct a small underground tunnel that will connect the House wing directly to House expansion space.
- Crews continue to lay granite pavers in various zones on the Senate Plaza and along the sidewalk leading to the Senate Steps as restoration activities continue.

East Capitol Street Utility Tunnel

- First Street continues to be constricted at the intersection with East Capitol Street to allow for utility work in this zone. Washington Gas has completed its efforts to reconfigure an existing gas line over the new utility tunnel. Final welding of the gas line will be completed by mid-week. Sequence 2 crews will begin assembling the formwork for the concrete walls that will be constructed around the utility connections at this location.
- The utility connections to steam and chilled water lines at Second Street are ongoing and concrete placements for the walls and roof slab at Second Street around the utility connection points have been completed. All structural work for the tunnel is expected to be completed by mid-January.



With the help of a small forklift, a CVC worker maneuvers a 6,000-pound steel beam through the door threshold of the South Orientation Theater. The beam will be anchored to the opposite wall and will support a projection screen that measures 34 feet across and 19 feet high.

Next Week – 12/26/05 – 12/30/05

CVC and East Front Plaza Work

- Crews will continue to install ductwork and piping for all heating, cooling, supply, waste water, fire protection, and electrical systems; build mechanical spaces, install cable trays, place concrete, erect blockwork and metal stud walls, and install finish stone in areas on the upper and middle levels of the facility.
- Installation and welding of pipe will continue inside the new utility tunnel along East Capitol Street between First and Second Streets. Related utility tie-in work and concrete placements will continue at First Street.
- Crews will continue backfilling above the utility tunnel in preparation for East Capitol Street restoration activities in February.
- Crews will continue installing mechanical, electrical and plumbing systems, metal stud walls, drywall, underslab conduit, ductwork and floor topping slabs in the House and Senate Expansion Space.
- Demolition and removal of foundation stone will continue below the House Carriageway as part of the construction of a small underground tunnel that will connect the House wing directly to the Capitol Visitor Center.
- Masons will continue installing granite pavers to restore the Senate Plaza and the adjacent sidewalk.

If you have any questions about the Capitol Visitor Center Project, please contact Tom Fontana, Project Communications Officer at (202) 228-1310 or by e-mail at tfontana@aac.gov. For this and previous editions of the Weekly Construction Summary, visit our web site at www.aoc.gov (click on the "Capitol Visitor Center" link).