

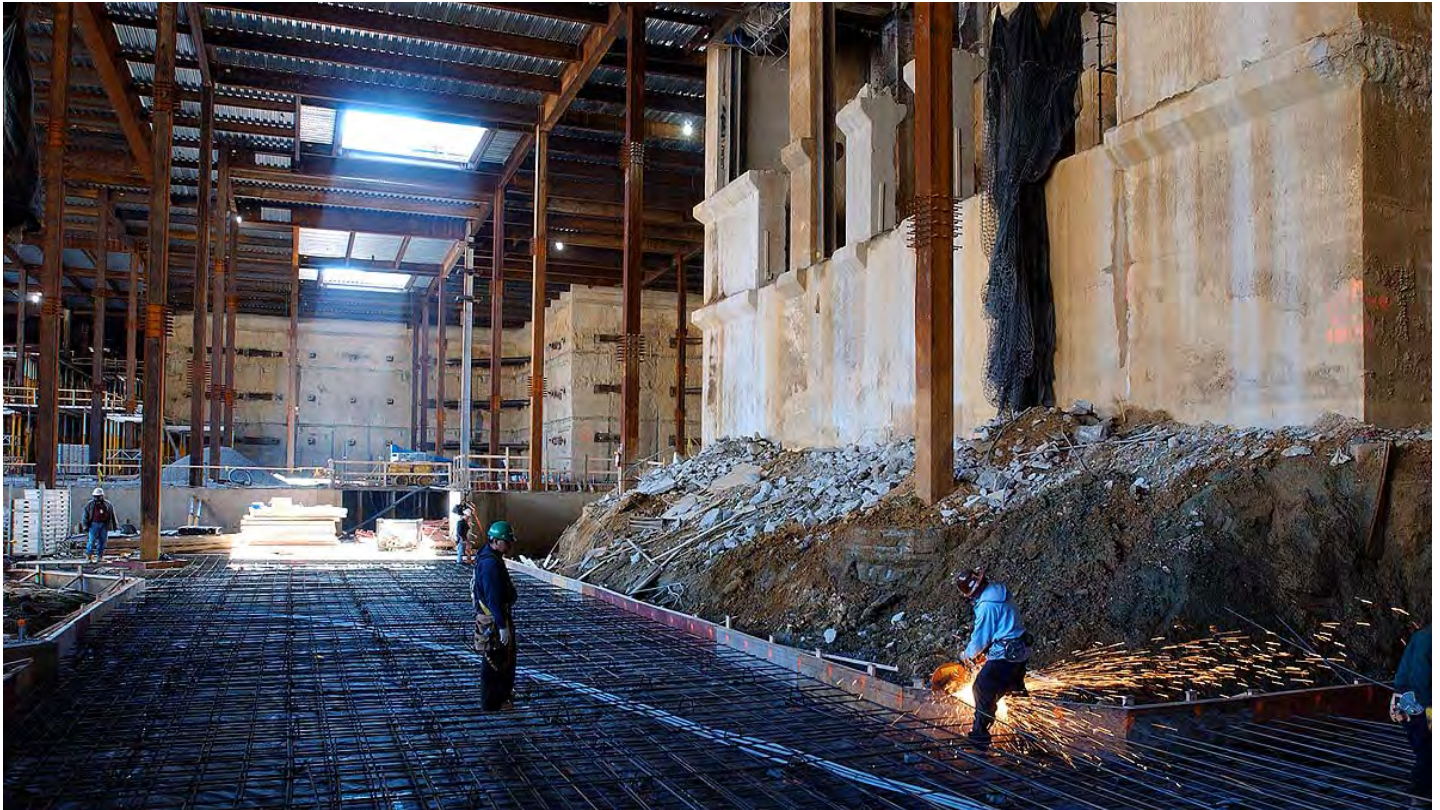


United States Capitol Visitor Center Weekly Construction Summary



Prepared by the Capitol Visitor Center Project Office, Architect of the Capitol

April 5, 2004



Workers prepare formwork for the slab-on-grade in front of the concrete support structure for the East Front Center Steps. Once the slab cures, the formwork will be erected for the Lower Level slab which, in this area, will support the CVC's 16,500-square-foot Exhibition Gallery.

This Week – Ongoing Work – 4/05/04 through 4/09/04

East Front Plaza Highlights:

- Concrete placements for the second roof deck slab will occur on the north side of the site over the next several weeks.
- Crews will continue placing and testing waterproofing applications on the roof deck.
- Concrete placements will continue in all three levels of the CVC.
- The formwork for the floor slab of the Great Hall is substantially complete (see top photo next page).
- Crews continue to build mechanical spaces, erect formwork, excavate and install utilities throughout the site.

East Front Extension (Inside the Capitol)

- Crews will continue to erect structural steel inside the East Front Extension and continue with demolition activities to clear the way for elevator shafts, stairwells and new mechanical systems.

Truck Tunnel Construction

- Crews continue to assemble rebar and formwork for the tunnel walls and roof deck. Concrete pours and waterproofing applications will occur for the next several weeks.
- On **Monday, April 12**, workers will begin to remove the temporary bridge structure on Constitution Avenue that lies over the new truck tunnel just east of New Jersey Avenue NW. Once the bridge is removed, crews will backfill the zone, place asphalt for the road and re-establish sidewalks and curbs. The work will be accomplished in two phases-- first the south side, then the north side--in order to maintain traffic flow on Constitution Avenue at all times. However, in an effort to avoid impacts to parking, **Constitution Avenue will be reduced from four lanes to three for the six-week restoration period.** Two of the three lanes will accommodate westbound traffic during the morning rush hour and then eastbound traffic during the evening rush hour. Pedestrian access will be maintained along one side of the construction zone.

Library of Congress (LOC) Tunnel

- Crews are expected to finish drilling piles across the eastern half of First Street SE. The piles are necessary to support the sides of the LOC tunnel walls before excavation occurs.
- Excavation continues near the northwest corner of the LOC building. A crew will begin constructing a temporary bridge along First Street over the excavation zone to allow excavation to occur without disrupting traffic.
- Crews will continue assembling the formwork for the floor slab and walls of the tunnel within the CVC site.

Next Week – 4/12/04 - 4/16/04

East Front Plaza Work

- Crews will continue to waterproof the CVC roof slab, conduct waterproofing tests and place a 6-inch gravel bed on the northern half of the roof deck in preparation for the next concrete roof slab.
- Crews will continue to install utilities, build mechanical spaces, erect formwork and place concrete floor slabs for all three below-ground levels of the CVC.

East Front Extension

- Steel crews will continue to erect steel within the East Front concrete structure. Demolition of structural elements will continue on all levels within the East Front Extension and in the Carriageway below the East Front Center Steps. Demolition of major structural columns will continue inside the East Front transition zone. Major slab demolition for the two 25-passenger elevators has been completed within the north side of the East Front.



Workers have begun placing concrete for the floor slab of the Great Hall.



Near the northwest corner of the Library of Congress, crews have excavated the first five feet of a new pedestrian tunnel to the CVC.

Truck Tunnel Construction

- Crews will continue to erect formwork, place concrete and waterproof the roof deck and walls in all areas of the truck tunnel construction zone.
- Work to restore Constitution Avenue will continue for several weeks (full description on first page).

Library of Congress (LOC) Tunnel

- Excavation will begin in First Street SE and continue adjacent to the northwest corner of the LOC building.
- Crews will continue installing a temporary bridge along First Street over the tunnel excavation zone.
- Formwork assembly, concrete placements, and waterproofing applications will continue within the CVC site for the tunnel floor slab and walls.



United States Capitol Visitor Center Weekly Construction Summary



Prepared by the Capitol Visitor Center Project Office, Architect of the Capitol

February 17, 2004



Above is an aerial view of the CVC project site taken the morning of Friday, February 13, 2004. The steel roof deck above the western half of the CVC is nearly complete and late last week crews began placing concrete on the northern half of the roof deck. The first of two concrete roof slabs already covers the entire southern half of the deck where crews have begun to apply the first layer of waterproofing (inset at right).

Stone workers are expected to begin installing granite pavers on the East Plaza deck by mid-spring. Meanwhile, construction continues at a feverish pace below the deck as crews continue to build mechanical space, erect formwork, and pour concrete floor slabs on all three levels of the CVC.

This Week – Ongoing Work – 2/16/04 through 2/20/04

East Front Plaza Highlights:

- Crews have completed placing the first of two concrete slabs over the entire southern half of the steel roof deck and they began late last week to place concrete on the northern half of the roof deck in front of the original Senate wing.
- Crews continue to assemble the formwork for both the Lower and Upper level floor slabs above the slab on grade, and concrete placements will continue on all three levels of the CVC.
- Crews continue to build mechanical spaces, erect formwork, excavate and install utilities throughout the site.

East Front Extension (Inside the Capitol)

- Crews will continue to erect structural steel inside the East Front. As steel is erected, demolition crews will remove adjacent portions of the floor slabs and interior walls to clear the way for elevator shafts, stairwells and new mechanical systems. With Members on recess this week, some work may occur 24 hours a day.
- Late in the week, crews may begin demolition of some of the large concrete structural columns supporting the East Front Center Steps.



A CVC crew places concrete for the Lower Level floor slab, one level up from the slab-on-grade. After the slab cures for several days, it will support formwork for the Upper Level floor slab (where dowels protrude from the steel columns). The CVC roof deck is visible at the top of the photo.

Senate Side (Truck Tunnel Zone)

Truck Tunnel Construction:

- Crews continue to assemble rebar and formwork for the tunnel walls and roof deck. Concrete pours will occur for the next several weeks.

Library of Congress Tunnel

- First Street SE has been constricted by construction barriers along the LOC tunnel route, but one lane of traffic is being maintained in each direction. No change in the lane configuration will occur this week.
- Crews have begun installing "soldier" piles that support the sides of the LOC tunnel while excavation occurs.
- Crews will start this week assembling the formwork for the floor slab and walls of the tunnel at its westernmost end adjacent to the slurry wall just south of the CVC south entrance ramp.

Next Week – 2/23/04 - 2/27/04

East Front Plaza Work

- Crews will continue to install roof decking, lay rebar and place concrete on the roof deck in the northern half of the site.
- Crews will continue install utilities, build mechanical spaces, erect formwork and place concrete floor slabs.

East Front Extension (Inside the Capitol)

- Steel crews will also continue to erect steel to support the East Front Steps and other portions of the East Front concrete structure. Demolition of structural elements will continue on all levels within the East Front Extension and in the Carriageway below the East Front Center Steps.

Senate Side (Truck Tunnel Zone)

- Crews will continue to erect formwork and place concrete in all areas of the truck tunnel construction zone.

Library of Congress Tunnel

- Crews will continue to place piles and excavate across First Street SE.
- Formwork assembly will continue near the LOC tunnel entrance.

If you have any questions about the Capitol Visitor Center Project, please contact Tom Fontana, CVC project communications officer, at (202) 228-1310, or by e-mail at tfontana@ocg.gov. You can read this document and previous editions on the CVC web site at www.ocg.gov.



United States Capitol Visitor Center Weekly Construction Summary



Prepared by the Capitol Visitor Center Project Office, Architect of the Capitol

February 23, 2004



With the slab-on-grade in place in the southeast quadrant of the CVC site (foreground), crews continue assembling formwork for the Lower Level floor slab. Meanwhile, 50-foot-long plastic tarps, in combination with propane heaters below the roof deck structure, help maintain the temperature below the roof deck above the freezing point for seven consecutive days—a condition necessary for concrete to cure properly. Weather permitting, crews will complete two significant concrete placements on the northern half of the roof deck this week.

This Week – Ongoing Work – 2/23/04 through 2/27/04

East Front Plaza Highlights:

- Crews have completed placing the first of two concrete slabs over the entire southern half of the steel roof deck and are now applying the waterproofing membrane on the concrete that has cured sufficiently for 28 days. Meanwhile, concrete placements are now occurring throughout the northern half of the roof deck.
- Crews continue to assemble the formwork for both the Lower and Upper level floor slabs above the slab on grade throughout the southern half of the site, and concrete placements will continue on all three levels.
- Crews continue to build mechanical spaces, erect formwork, excavate and install utilities throughout the site.



After digging with shovels and buckets, workers use a small rail car to remove material from a new utility tunnel on the north side of the CVC site.

East Front Extension (Inside the Capitol)

- Crews will continue to erect structural steel inside the East Front. As steel is erected, demolition crews will remove adjacent portions of the floor slabs and interior walls to clear the way for elevator shafts, stairwells and new mechanical systems.
- Within the next two weeks, crews are expected to begin demolishing some of the large concrete structural columns supporting the East Front Center Steps (*see photo and caption below*).



A CVC crew guides a massive steel support beam in place below the East Front Center Steps. Once the beam is secured to new steel support columns (far left and right), crews will remove the two large center concrete columns (center of the photo) that were built in 1958-62 when the East Front was extended 32 feet. The column demolition will clear the way for installation of a grand staircase and escalators that will connect the CVC to the Capitol at the Crypt level.

Senate Side (Truck Tunnel Zone)

Truck Tunnel Construction:

- Crews continue to assemble rebar and formwork for the tunnel walls and roof deck. Concrete pours will occur for the next several weeks.

Library of Congress Tunnel

- First Street SE has been constricted by construction barriers along the LOC tunnel route, but one lane of traffic is being maintained in each direction. No change in the lane configuration will occur this week.
- Crews will continue installing "soldier" piles to support the sides of the LOC tunnel before excavation occurs.
- Crews will continue assembling the formwork for the floor slab and walls of the tunnel at its westernmost end adjacent to the slurry wall just south of the CVC south entrance ramp.

Next Week – 3/01/04 - 3/05/04

East Front Plaza Work

- Crews will continue to install roof decking, lay rebar and place concrete on the roof deck in the northern half of the site.
- Crews will continue install utilities, build mechanical spaces, erect formwork and place concrete floor slabs.

East Front Extension (Inside the Capitol)

- Steel crews will also continue to erect steel to support the East Front Steps and other portions of the East Front concrete structure. Demolition of structural elements will continue on all levels within the East Front Extension and in the Carriageway below the East Front Center Steps. Demolition of major structural columns is expected to begin.

Senate Side (Truck Tunnel Zone)

- Crews will continue to erect formwork and place concrete in all areas of the truck tunnel construction zone.

Library of Congress Tunnel

- Crews are expected to complete pile placement and excavation across First Street SE is expected to begin.
- Formwork assembly will continue near the LOC tunnel entrance within the CVC site.

If you have any questions about the Capitol Visitor Center Project, please contact Tom Fontana, CVC project communications officer, at (202) 228-1310, or by e-mail at tfontana@ao.gov. You can read this document and previous editions on the CVC web site at www.aoc.gov.



United States Capitol Visitor Center Weekly Construction Summary



Prepared by the Capitol Visitor Center Project Office, Architect of the Capitol

March 1, 2004



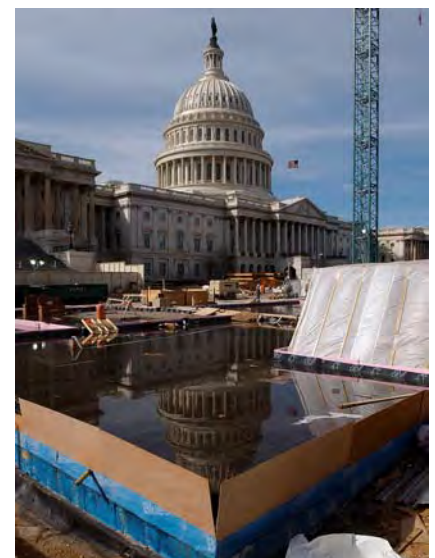
A large concrete placement occurred on the north side of the CVC roof deck (center of photo) late last week. Another major placement will occur just north of this zone on Monday, March 1, 2004. Meanwhile, waterproofing tests are occurring on the south side of the roof deck (see photo below).

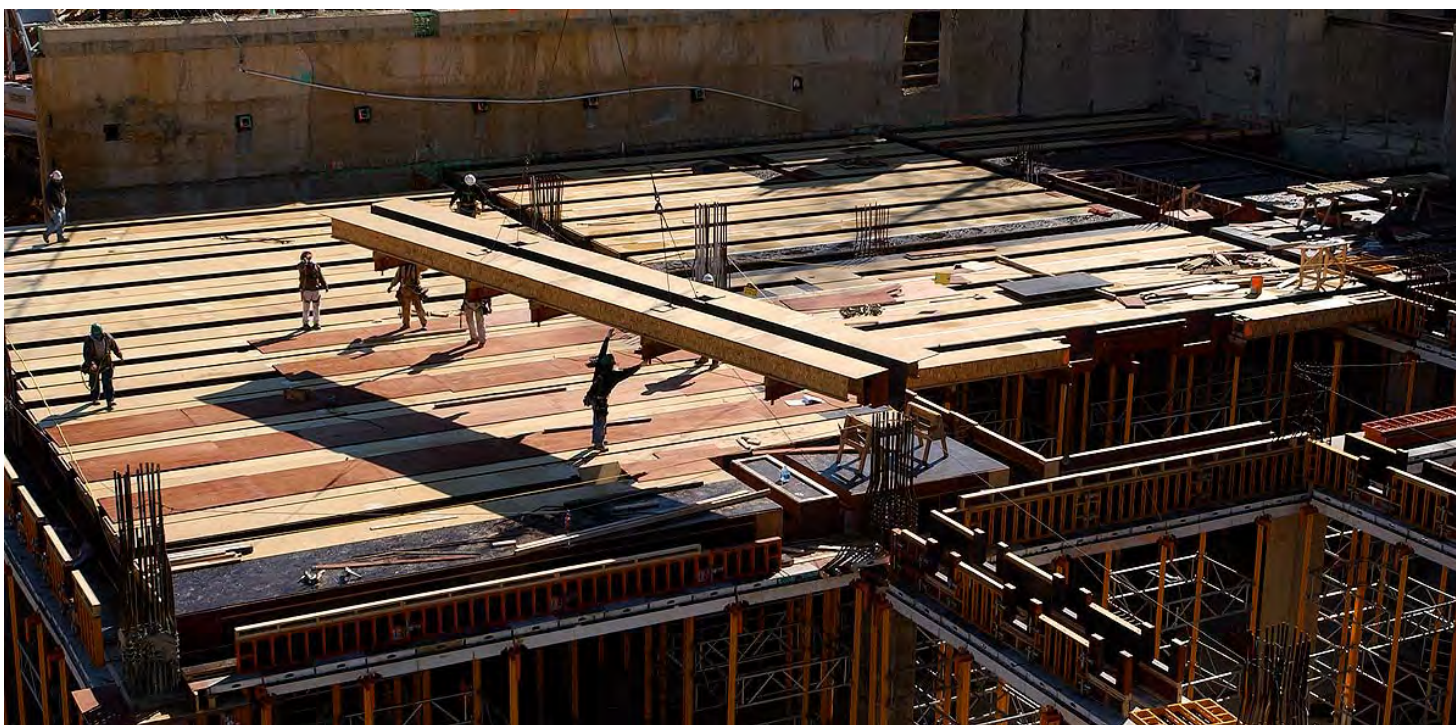
This Week – Ongoing Work – 3/01/04 through 3/05/04

East Front Plaza Highlights:

- Crews will continue applying waterproofing on the concrete on the southern half of the roof deck. Thus far, tests of waterproofing applications covering several thousand square feet of the first concrete roof slab have all been successful. Meanwhile, major concrete placements are now occurring in the northeast quadrant of the steel roof deck.
- Crews have assembled the formwork for both the Lower and Upper level floor slabs above the slab on grade throughout House expansion space, and concrete placements will occur during the next two weeks.
- Crews continue to build mechanical spaces, erect formwork, excavate and install utilities throughout the site.
- The last remaining major portion of the excavation – the vehicle access ramp in the center of the site – is being removed this week.

At right: East Front reflecting pool? Actually, the Capitol Dome is reflected in a pool of water created to test waterproofing that has been applied over a portion of the concrete roof deck at the southern end of the CVC site. All waterproofing tests have been successful thus far.





A CVC crew guides formwork into place near the southeast quadrant of the site, an area that will be occupied partly by a 600-seat dining facility.

East Front Extension (Inside the Capitol)

- Crews will continue to erect structural steel inside the East Front. As steel is erected, demolition crews will remove adjacent portions of the floor slabs and interior walls to clear the way for elevator shafts, stairwells and new mechanical systems.
- Late in the week, crews are expected to begin demolishing some of the large concrete structural columns supporting the East Front Center Steps.

Senate Side: Truck Tunnel Construction

- Crews continue to assemble rebar and formwork for the tunnel walls and roof deck. Concrete pours and waterproofing applications will occur for the next several weeks. Close to 50 percent of the concrete for the tunnel has been placed.

Library of Congress (LOC) Tunnel

- First Street SE has been constricted by construction barriers along the LOC tunnel route, but one lane of traffic is being maintained in each direction. No change in the lane configuration will occur this week.
- Crews will continue installing "soldier" piles to support the sides of the LOC tunnel before excavation occurs.
- Crews will continue assembling the formwork for the floor slab and walls of the tunnel at its westernmost end adjacent to the slurry wall just south of the CVC south entrance ramp.

Next Week – 3/08/04 - 3/12/04

East Front Plaza Work

- Crews will continue to waterproof roof slabs, lay rebar, and place concrete on the roof deck in the northern half of the site.
- Crews will continue install utilities, build mechanical spaces, erect formwork and place concrete floor slabs.

East Front Extension (Inside the Capitol)

- Steel crews will also continue to erect steel to support the East Front Steps and other portions of the East Front concrete structure. Demolition of structural elements will continue on all levels within the East Front Extension and in the Carriageway below the East Front Center Steps. Demolition of major structural columns is expected to continue.

Senate Side (Truck Tunnel Zone)

- Crews will continue to erect formwork and place and waterproof concrete in all areas of the truck tunnel construction zone.

Library of Congress (LOC) Tunnel

- Excavation will continue across First Street SE and adjacent to the northwest corner of the LOC building
- Formwork assembly will continue near the LOC tunnel entrance within the CVC site.

If you have any questions about the Capitol Visitor Center Project, please contact Tom Fontana, CVC project communications officer, at (202) 228-1310, or by e-mail at tfontana@aac.gov. You can read this document and previous editions on the CVC web site at www.aac.gov.



United States Capitol Visitor Center Weekly Construction Summary



Prepared by the Capitol Visitor Center Project Office, Architect of the Capitol

May 3, 2004



Taken April 27, 2004, this aerial view looking south over of the CVC project site shows the western half of the CVC concrete roof deck in place and the truck tunnel construction zone in the right foreground. Stone masons will begin laying granite curb stones over the next two weeks near the East Front Center Steps and the original Senate wing. Later in May, once the curbs stones are in place, crews will then begin setting the first of 200,000 8-inch-square granite paving stones. Emergency egress from the Rotunda has been established on the north side of the CVC roof deck.

This Week – Ongoing Work – 5/03/04 through 5/07/04

East Front Plaza Highlights:

- The top concrete roof slab is now in place over the northern half of the CVC roof deck and stone masons will begin to lay out and set granite curb stones later this week. Crews will begin setting 8-inch square paving stones later this month.
- Concrete placements will continue on all three levels of the CVC.
- Crews continue to build mechanical spaces, erect formwork and install utilities throughout the site.
- Emergency egress from the Rotunda has been established on the northern half of the CVC roof deck.

East Front Extension (Inside the Capitol)

- Crews continue to erect structural steel inside the East Front Extension and continue with demolition activities to clear the way for elevator shafts, escalators, stairwells and new mechanical systems.

Truck Tunnel Construction

- Dump trucks continue to backfill the tunnel zone above the tunnel roof deck.
- In other areas, crews continue to assemble rebar and formwork for the tunnel walls and roof deck. The concrete slab on grade is entirely in place with the exception of 20 feet at the southernmost end of the tunnel.

- Workers will continue to remove the temporary bridge structure on Constitution Avenue that lies over the new truck tunnel just east of New Jersey Avenue NW. Once the bridge is removed, crews will backfill the zone, place asphalt for the road and re-establish sidewalks and curbs. In an effort to avoid impacts to parking, Constitution Avenue has been reduced from four lanes to three for the six-week restoration period.

Scaffolding rises in the center of the CVC site near one of the two Great Hall skylight openings (center of photo). The scaffolding will support formwork for a portion of the lower level floor slab that will lead visitors from the Great Hall into a 600-seat dining facility.



Library of Congress (LOC) Tunnel

- A crew will continue constructing a temporary bridge along the western half of First Street over the excavation zone to allow excavation to occur without disrupting traffic.
- The bulk of excavation near the northwest corner of the LOC building has been completed and crews are now pouring concrete to establish the slab on grade, which lies approximately 20 feet below ground level.

Next Week – 5/10/04 - 5/14/04

East Front Plaza Work

- Stone masons will continue setting granite curb stones on the north side.
- Crews will continue to waterproof portions of the CVC roof slab, conduct waterproofing tests, and place the “topping” slab of concrete throughout the roof deck.
- Crews will continue to install utilities, build mechanical spaces, erect formwork and place concrete floor slabs for all three below-ground levels of the CVC.

East Front Extension

- Steel crews will continue to erect steel within the East Front concrete structure. Demolition of structural elements will continue on all levels within the East Front Extension and in the Carriageway below the East Front Center Steps. Demolition of major structural columns will continue inside the East Front transition zone.

Truck Tunnel Construction

- Crews will continue to erect formwork, place concrete and waterproof the roof deck and walls in all areas of the truck tunnel construction zone. Close to 75 percent of the concrete for the tunnel is in place.
- Work to restore Constitution Avenue will continue for several weeks and is expected to be completed by Memorial Day.

Library of Congress (LOC) Tunnel

- Crews will continue installing a temporary bridge along First Street over the tunnel excavation zone.
- Formwork assembly and concrete placements will continue near the LOC and within the CVC site for the tunnel floor slab and walls.



Steel beams and wood shoring help to frame the easternmost end of the LOC tunnel where excavation has been completed. Meanwhile, work continues on a temporary bridge along First Street SE to allow excavation to occur below traffic.

CVC Construction Photos (April 26-30, 2004)

*Clockwise from right:
Two workers assemble the rebar cage for a portion of the north wall of the Congressional Auditorium.*

Formwork is lowered over the rebar cage for a concrete column in the northeast quadrant.

Workers apply waterproofing membrane to the top concrete slab in front of the East Front Center Steps.

A steel beam supports the arcade structure of the carriageway below the East Front Center Steps.

Center: Workers assemble reinforcing steel inside the East Front Extension within the main transition zone between the CVC and the Capitol.





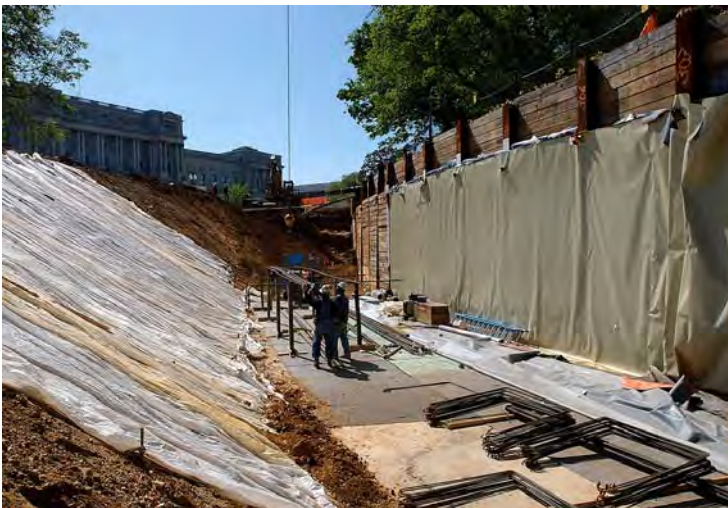
Clockwise from left:

Sequence 1 crews assemble formwork and pour concrete for the floor slab of a 600-seat dining facility, which will be located below the entrance of the CVC.

Workers lay steel rebar for the lower level floor slab of the south side Orientation Theater.

A crew places concrete for the easternmost portion of the Great Hall floor slab.

Crews begin assembling the north wall of a pedestrian tunnel to the Library of Congress while a waterproofing membrane hangs from the south wall.





United States Capitol Visitor Center Weekly Construction Summary



Prepared by the Capitol Visitor Center Project Office, Architect of the Capitol

March 8, 2004



Crews assemble steel rebar for the floor slab of the Congressional Auditorium in the easternmost portion of the CVC site.

This Week – Ongoing Work – 3/08/04 through 3/12/04

East Front Plaza Highlights:

- Crews will continue testing waterproofing applications on the southern half of the roof deck. Meanwhile, concrete placement on the northern half of the roof deck will near completion this week.
- Concrete placements will continue on the Upper and Lower levels inside the southwest quadrant.
- Crews continue to build mechanical spaces, erect formwork, excavate and install utilities throughout the site.

East Front Extension (Inside the Capitol)

- Crews will continue to erect structural steel inside the East Front. As steel is erected, demolition crews will remove adjacent portions of the floor slabs and interior walls to clear the way for elevator shafts, stairwells and new mechanical systems.
- Crews will continue demolishing some of the large concrete structural columns supporting the East Front Center Steps.



A remote-controlled mini hoe-ram is being used to demolish one of the large concrete columns below the East Front Center Steps. Eventually, this area will be occupied by a grand staircase and escalators that will bring visitors from the CVC into the Capitol.

Senate Side: Truck Tunnel Construction

- Demolition crews are expected to break through the final concrete barrier separating the CVC site and the tunnel.
- Crews continue to assemble rebar and formwork for the tunnel walls and roof deck. Concrete pours and waterproofing applications will occur for the next several weeks. More than 50 percent of the concrete for the tunnel has been placed.

Library of Congress (LOC) Tunnel

- The traffic lanes may shift slightly this week as crews continue to drill piles across First Street SE. The piles are necessary to support the sides of the LOC tunnel walls before excavation occurs.
- Crews will continue assembling the formwork for the floor slab and walls of the tunnel within the CVC site.

Next Week – 3/15/04 - 3/19/04

East Front Plaza Work

- Crews will continue to waterproof the roof slab, lay rebar, and place concrete on the roof deck in the northern half of the site.
- Crews will continue install utilities, build mechanical spaces, erect formwork and place concrete floor slabs for all three below-ground levels of the CVC.

East Front Extension (Inside the Capitol)

- Steel crews will also continue to erect steel within the East Front concrete structure. Demolition of structural elements will continue on all levels within the East Front Extension and in the Carriageway below the East Front Center Steps. Demolition of major structural columns will continue.

Senate Side (Truck Tunnel Zone)

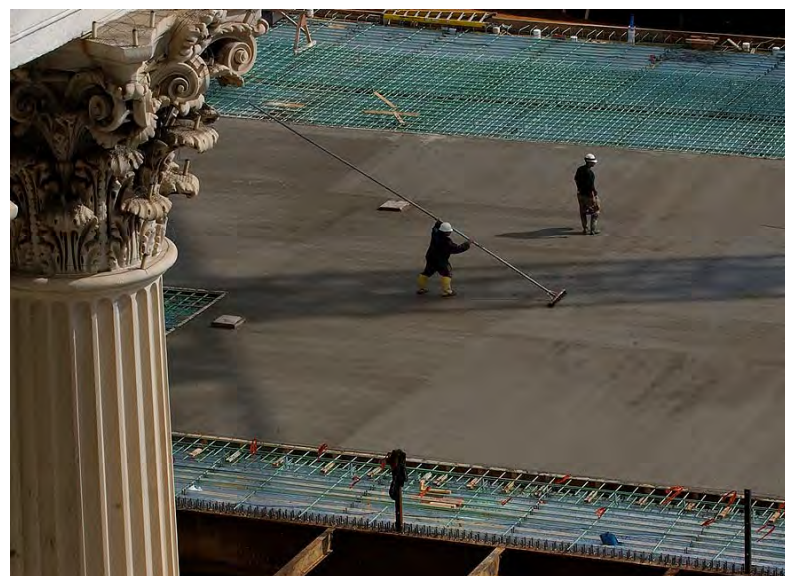
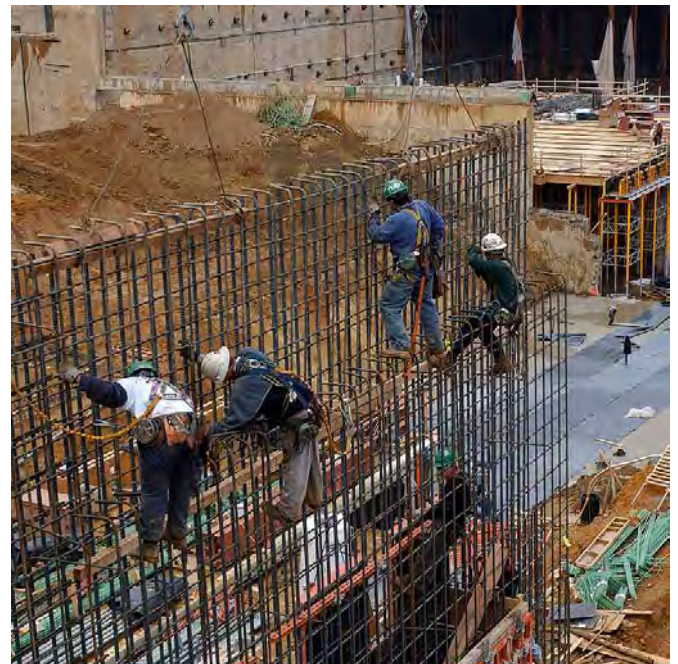
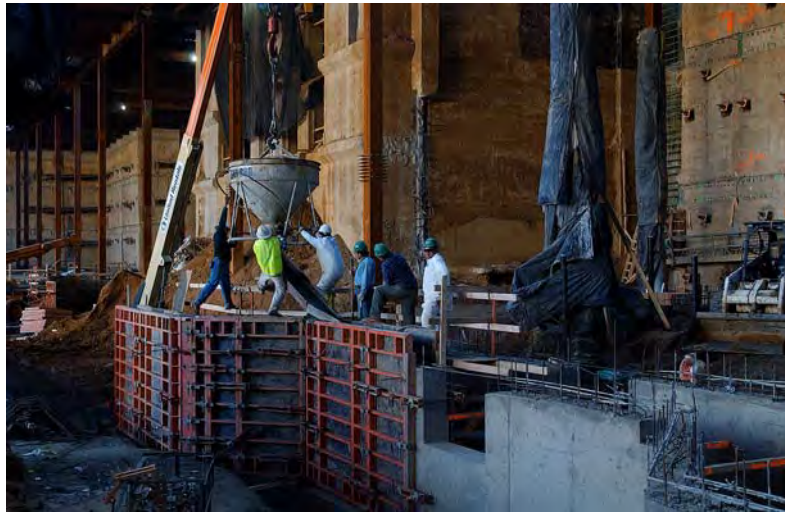
- Crews will continue to erect formwork and place and waterproof concrete in all areas of the truck tunnel construction zone.

Library of Congress (LOC) Tunnel

- Excavation may begin across First Street SE and adjacent to the northwest corner of the LOC building
- Formwork assembly will continue within the CVC site for the tunnel floor slab and walls.



Crews guide the placement of concrete on the northern half of the CVC roof deck. The last major placement of concrete is expected to occur March 9, 2003.



Clockwise from left: A worker uses a broom to smooth out some rough spots in newly-placed concrete in front of the Senate wing; a crew guides into place a large bucket containing concrete for an interior CVC utility trench wall; a view from the Capitol Dome (far bottom right of photo) shows waterproofing material (the dark areas) covering the entire roof deck above the House expansion space. The concrete deck in the center zone is being used to stage materials and equipment to be used to construct the interior spaces. Formwork for the Lower Level in the southeast quadrant (left-center of photo) is nearly complete; a crew assembles a rebar cage for the north wall of the Congressional Auditorium.



Clockwise from top left: A worker grinds the end of a steel beam that will be used to support a portion of the East Front Extension while demolition of structural elements continue; a bulldozer and a back-hoe work in tandem to remove the dirt ramp that, until last week, provided vehicles access to the western half of the CVC site. The removal of the ramp will clear the way for construction of concrete columns in the northeast quadrant of the site; a wide view of the central zone of the CVC site shows formwork being erected for the Lower Level floor slab (top-center) and a concrete placement occurring for the slab on grade (bottom-center). Work on the Congressional Auditorium can be seen in the top left corner of the photo; a crew applies a hot tar on a fiber membrane as part of the waterproofing application process for the CVC roof deck.



United States Capitol Visitor Center Weekly Construction Summary



Prepared by the Capitol Visitor Center Project Office, Architect of the Capitol

March 15, 2004



Light at the end of the Truck Tunnel: Last Thursday, March 11, 2004, after several days of demolition, a crew finally broke through the thick concrete wall separating the CVC from a new truck tunnel (top left of photo). Later this summer, the truck tunnel will be used by the Sequence 2 contractor to transport materials necessary for the build-out and finishes of the CVC. The tunnel will open for normal truck traffic to the Capitol in the spring of 2006.

This Week – Ongoing Work – 3/15/04 through 3/19/04

East Front Plaza Highlights:

- Crews will continue testing waterproofing applications on the southern half of the roof deck. The last major placement of concrete on the north side of the roof deck will occur later this week.
- Concrete placements will continue on the Upper and Lower levels inside the southwest quadrant.
- Crews continue to build mechanical spaces, erect formwork, excavate and install utilities throughout the site.

East Front Extension (Inside the Capitol)

- Crews will continue to erect structural steel inside the East Front. As steel is erected, demolition crews will remove adjacent portions of the floor slabs and interior walls to clear the way for elevator shafts, stairwells and new mechanical systems.
- Crews will continue demolishing some of the large concrete structural columns supporting the East Front. The two large columns below the East Front Steps were removed last week clearing the way for a grand staircase and escalators.

Senate Side: Truck Tunnel Construction

- Demolition broke through the final concrete barrier separating the CVC site and the tunnel (see photo above).
- Crews continue to assemble rebar and formwork for the tunnel walls and roof deck. Concrete pours and waterproofing applications will occur for the next several weeks. More than 55 percent of the concrete for the tunnel has been placed.



Crews have completed demolition of two large concrete columns (top center of photo), which until last week, were helping to support the East Front Center Steps. Heavy steel columns and beams have now taken their place as demolition of other concrete columns and structural elements will continue for several months.

Library of Congress (LOC) Tunnel

- The traffic lanes may shift slightly this week as crews continue to drill piles across First Street SE. The piles are necessary to support the sides of the LOC tunnel walls before excavation occurs.
- Excavation is expected to begin this week in the western half of First Street SE within the tunnel zone.
- Crews will continue assembling the formwork for the floor slab and walls of the tunnel within the CVC site.

Next Week – 3/22/04 - 3/26/04

East Front Plaza Work

- Crews will continue to waterproof the roof slab, lay rebar, and place concrete on the roof deck in the northern half of the site.
- Crews will continue install utilities, build mechanical spaces, erect formwork and place concrete floor slabs for all three below-ground levels of the CVC.

East Front Extension (Inside the Capitol)

- Steel crews will also continue to erect steel within the East Front concrete structure. Demolition of structural elements will continue on all levels within the East Front Extension and in the Carriageway below the East Front Center Steps. Demolition of major structural columns will continue inside the East Front transition zone. Major slab demolition for the two 25-passenger elevators has begun within the north side of the East Front.

Senate Side (Truck Tunnel Zone)

- Crews will continue to erect formwork and place and waterproof concrete in all areas of the truck tunnel construction zone.

Library of Congress (LOC) Tunnel

- Excavation and pile installation will continue in First Street SE and adjacent to the northwest corner of the LOC building.
- Formwork assembly will continue within the CVC site for the tunnel floor slab and walls.

If you have any questions about the Capitol Visitor Center Project, please contact Tom Fontana, CVC project communications officer, at (202) 228-1310, or by e-mail at tfontana@aoc.gov. You can read this document and previous editions on the CVC web site at www.aoc.gov.



United States Capitol Visitor Center Weekly Construction Summary



Prepared by the Capitol Visitor Center Project Office, Architect of the Capitol

March 22, 2004

This Week – Ongoing Work – 3/22/04 through 3/26/04

East Front Plaza Highlights:

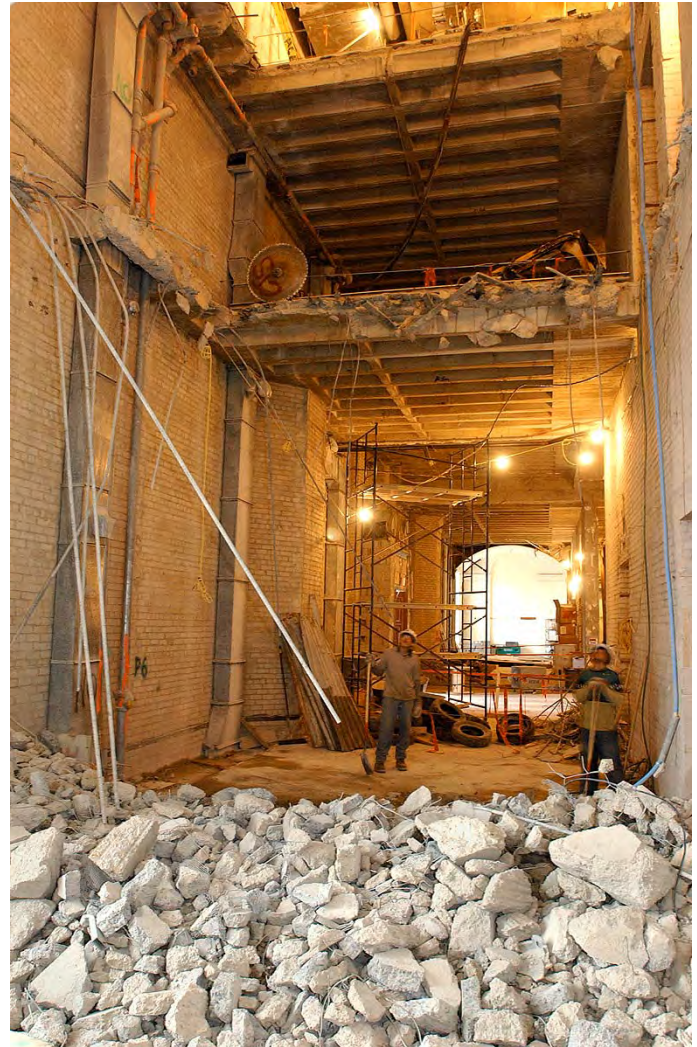
- Crews will continue testing waterproofing applications on the southern half of the roof deck and waterproofing applications are now occurring on the northern half of the site.
- Concrete placements will continue on the Upper and Lower levels inside the southwest quadrant (see photo below).
- Crews continue to build mechanical spaces, erect formwork, excavate and install utilities throughout the site.

East Front Extension (Inside the Capitol)

- Crews will continue to erect structural steel inside the East Front. As steel is erected, demolition crews will remove adjacent portions of the floor slabs and interior walls to clear the way for elevator shafts, stairwells and new mechanical systems (see photo at right).
- Crews will continue demolishing some of the large concrete structural columns supporting the East Front. The two large columns below the East Front Steps were removed last week clearing the way for a grand staircase and escalators.

Senate Side: Truck Tunnel Construction

- Demolition broke through the final concrete barrier separating the CVC site and the tunnel (see photo above).
- Crews continue to assemble rebar and formwork for the tunnel walls and roof deck. Concrete pours and waterproofing applications will occur for the next several weeks. More than 55 percent of the concrete for the tunnel has been placed.



The floor slabs for the 3rd and 4th floors within a portion of the northern half of the East Front Extension have been demolished to clear the way for elevators and air shafts.



A significant concrete placement occurred last week on the upper level floor slab inside the House Expansion space.

Library of Congress (LOC) Tunnel

- Crews continue to drill piles across First Street SE. The piles are necessary to support the sides of the LOC tunnel walls before excavation occurs.
- Excavation has begun in the western half of First Street SE within the tunnel zone and near the northwest corner of the LOC building.
- Crews will continue assembling the formwork for the floor slab and walls of the tunnel within the CVC site.

Next Week – 3/29/04 - 4/02/04

East Front Plaza Work

- Crews will continue to waterproof the CVC roof slab, conduct waterproofing tests, and place a 6-inch gravel bed on the southern half of the roof deck in preparation for the next concrete roof deck slab.
- Crews will continue to install utilities, build mechanical spaces, erect formwork and place concrete floor slabs for all three below-ground levels of the CVC.

East Front Extension (Inside the Capitol)

- Steel crews will continue to erect steel within the East Front concrete structure. Demolition of structural elements will continue on all levels within the East Front Extension and in the Carriageway below the East Front Center Steps. Demolition of major structural columns will continue inside the East Front transition zone. Major slab demolition for the two 25-passenger elevators has begun within the north side of the East Front.

Senate Side (Truck Tunnel Zone)

- Crews will continue to erect formwork, place concrete and waterproof the roof deck and walls in all areas of the truck tunnel construction zone.

Library of Congress (LOC) Tunnel

- Excavation will continue in First Street SE and adjacent to the northwest corner of the LOC building.
- Formwork assembly will continue within the CVC site for the tunnel floor slab and walls.

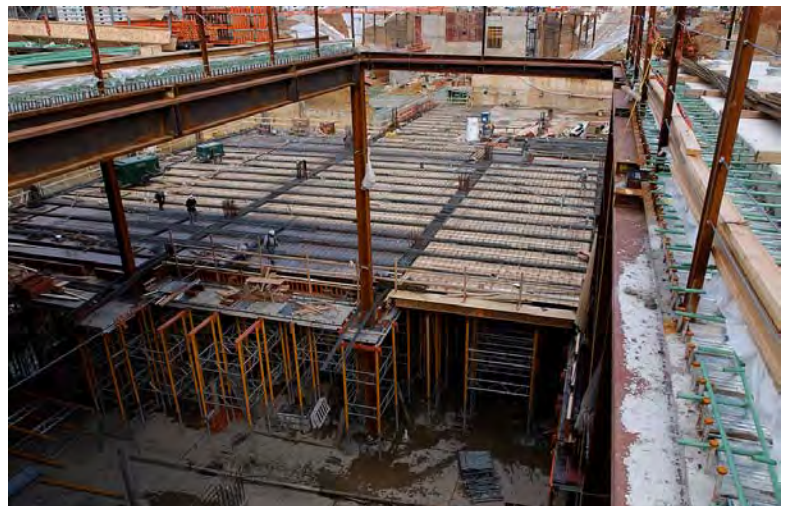


Above: With the formwork in place for a portion of the floor slab of the Great Hall, one can see the actual view that visitors will have of the Capitol Dome through the Great Hall's south skylight.

Below: A view through the same skylight looking down from the roof deck toward the eastern half of the site where crews continue to erect formwork for the lower level floor slab.



Left: Waterproofing inspectors? Not exactly, but one waterproofing zone on the CVC roof deck has lured at least two ducks to test the waters on the East Front Plaza.





United States Capitol Visitor Center Weekly Construction Summary



Prepared by the Capitol Visitor Center Project Office, Architect of the Capitol

March 29, 2004



Aerial view of the CVC project site taken Thursday, March 25, 2004. A 13-inch concrete slab now covers the steel roof deck over the entire western half of the project area. Much of the first roof slab has been waterproofed and crews have now begun placing the second concrete slab. Formwork assembly, concrete placements and utility installation continue throughout the site on all three levels below the roof deck.

This Week – Ongoing Work – 3/29/04 through 4/2/04

East Front Plaza Highlights:

- The first placement of concrete for the second roof deck slab was completed on Monday, March 29, in front of the original House Wing. Additional concrete placements for the second roof deck slab will occur over the next several weeks.
- Crews will continue testing waterproofing applications on the northern half of the roof deck and they have now completed waterproofing applications on most of the roof deck.
- Concrete placements will continue in all three levels of the CVC.
- The formwork for the lower level floor slab of the Great Hall is substantially complete.
- Crews continue to build mechanical spaces, erect formwork, excavate and install utilities throughout the site.

East Front Extension (Inside the Capitol)

- Crews will continue to erect structural steel inside the East Front and continue with demolition activities to clear the way for elevator shafts, stairwells and new mechanical systems.

Senate Side: Truck Tunnel Construction

- Crews continue to assemble rebar and formwork for the tunnel walls and roof deck. Concrete pours and waterproofing applications will occur for the next several weeks. More than 55 percent of the concrete for the tunnel has been placed.

Library of Congress (LOC) Tunnel

- Crews will drill piles across the eastern half of First Street SE. The piles are necessary to support the sides of the LOC tunnel walls before excavation occurs.
- Excavation continues in the western half of First Street SE within the tunnel zone and near the northwest corner of the LOC building. A temporary bridge in First Street over the excavation zone will be constructed over the next few weeks.
- Crews will continue assembling the formwork for the floor slab and walls of the tunnel within the CVC site.



Architect of the Capitol, Alan Hantman (left) discusses CVC project activities with Senator Tom Daschle (D-SD) during a project site on Friday, March 26, 2004.

Next Week – 4/5/04 - 4/9/04

East Front Plaza Work

- Crews will continue to waterproof the CVC roof slab, conduct waterproofing tests and place a 6-inch gravel bed on the northern half of the roof deck in preparation for the next concrete roof slab.
- Crews will continue to install utilities, build mechanical spaces, erect formwork and place concrete floor slabs for all three below-ground levels of the CVC.

East Front Extension (Inside the Capitol)

- Steel crews will continue to erect steel within the East Front concrete structure. Demolition of structural elements will continue on all levels within the East Front Extension and in the Carriageway below the East Front Center Steps. Demolition of major structural columns will continue inside the East Front transition zone. Major slab demolition for the two 25-passenger elevators continues within the north side of the East Front.



Excavation continues for a new pedestrian tunnel to the Library of Congress (background).

Senate Side (Truck Tunnel Zone)

- Crews will continue to erect formwork, place concrete and waterproof the roof deck and walls in all areas of the truck tunnel construction zone.

Library of Congress (LOC) Tunnel

- Excavation will continue in First Street SE and adjacent to the northwest corner of the LOC building.
- Crews will begin installing a temporary bridge over First Street over the tunnel excavation zone.
- Formwork assembly will continue within the CVC site for the tunnel floor slab and walls.

If you have any questions about the Capitol Visitor Center Project, please contact Tom Fontana, CVC project communications officer, at (202) 228-1310, or by e-mail at tfontana@aoc.gov. You can read this document and previous editions on the CVC web site at www.aoc.gov.



United States Capitol Visitor Center Weekly Construction Summary



Prepared by the Capitol Visitor Center Project Office, Architect of the Capitol

April 12, 2004



During the week of April 5-9, 2004, workers began placing the second concrete slab on the CVC roof deck in front of the original Senate wing.

This Week – Ongoing Work – 4/12/04 through 4/16/04

East Front Plaza Highlights:

- Concrete placements for the second roof deck slab will continue on the north side of the site over the next several weeks.
- Crews will continue placing and testing waterproofing applications on the roof deck.
- Concrete placements will continue in all three levels of the CVC.
- The formwork for the floor slab of the Great Hall is substantially complete.
- Crews continue to build mechanical spaces, erect formwork, excavate and install utilities throughout the site.

East Front Extension (Inside the Capitol)

- Crews will continue to erect structural steel inside the East Front Extension and continue with demolition activities to clear the way for elevator shafts, escalators, stairwells and new mechanical systems.

Truck Tunnel Construction

- Crews continue to assemble rebar and formwork for the tunnel walls and roof deck. Concrete pours and waterproofing applications will occur for the next several weeks.
- Workers will begin this week to remove the temporary bridge structure on Constitution Avenue that lies over the new truck tunnel just east of New Jersey Avenue NW. Once the bridge is removed, crews will backfill the zone, place asphalt for the road and re-establish sidewalks and curbs. The work will be accomplished in two phases--first the south side, then the north side--in order to maintain traffic flow on Constitution Avenue at all times. However, in an effort to avoid impacts to parking, Constitution Avenue will be reduced from four lanes to three for the six-week restoration period.

Library of Congress (LOC) Tunnel

- Workers will continue drilling piles across the eastern half of First Street SE. The piles are necessary to support the sides of the LOC tunnel walls before excavation occurs.
- Excavation continues near the northwest corner of the LOC building. A crew has begun constructing a temporary bridge along the western half of First Street over the excavation zone to allow excavation to occur without disrupting traffic.
- Weather permitting, crews will begin assembling the formwork for the floor slab of the tunnel within the CVC site.

A crew applies waterproofing materials to a concrete slab in front of the Senate Wing.



Next Week – 4/19/04 - 4/23/04

East Front Plaza Work

- Crews will continue to waterproof portions of the CVC roof slab, conduct waterproofing tests, lay a 6-inch gravel bed and place the second or “topping” slab of concrete throughout the northern half of the roof deck.
- Crews will continue to install utilities, build mechanical spaces, erect formwork and place concrete floor slabs for all three below-ground levels of the CVC.

East Front Extension

- Steel crews will continue to erect steel within the East Front concrete structure. Demolition of structural elements will continue on all levels within the East Front Extension and in the Carriageway below the East Front Center Steps. Demolition of major structural columns will continue inside the East Front transition zone. Major slab demolition for the two 25-passenger elevators is being completed within the north side of the East Front.



A worker uses a blow-torch to cut through steel rebar below the East Front Center Steps. Most of the concrete slab in the foreground has been removed to clear the zone for a grand staircase and escalators that will connect the CVC to the Capitol.

Truck Tunnel Construction

- Crews will continue to erect formwork, place concrete and waterproof the roof deck and walls in all areas of the truck tunnel construction zone.
- Work to restore Constitution Avenue will continue for several weeks

Library of Congress (LOC) Tunnel

- Excavation will continue in First Street SE and continue adjacent to the northwest corner of the LOC building.
- Crews will continue installing a temporary bridge along First Street over the tunnel excavation zone.
- Formwork assembly and concrete placements will continue within the CVC site for the tunnel floor slab.



United States Capitol Visitor Center Weekly Construction Summary



Prepared by the Capitol Visitor Center Project Office, Architect of the Capitol

April 19, 2004



Sequence 1 crews continue to assemble the formwork for the Lower Level floor slab. The area shown here will be home to two 250-seat orientation theaters. Inside the theaters, visitors will enjoy a short film about the Capitol and the Congress before beginning their tour.

This Week – Ongoing Work – 4/19/04 through 4/23/04

East Front Plaza Highlights:

- Concrete placements for the second roof deck slab will continue on the north side of the site over the next several weeks. Approximately 85 percent of the north roof deck now has the top slab in place.
- Crews will continue placing and testing waterproofing applications on the roof deck.
- Concrete placements will continue on all three levels of the CVC and the concrete floor slab for the Great Hall is now substantially complete.
- Crews continue to build mechanical spaces, erect formwork, excavate and install utilities throughout the site.

East Front Extension (Inside the Capitol)

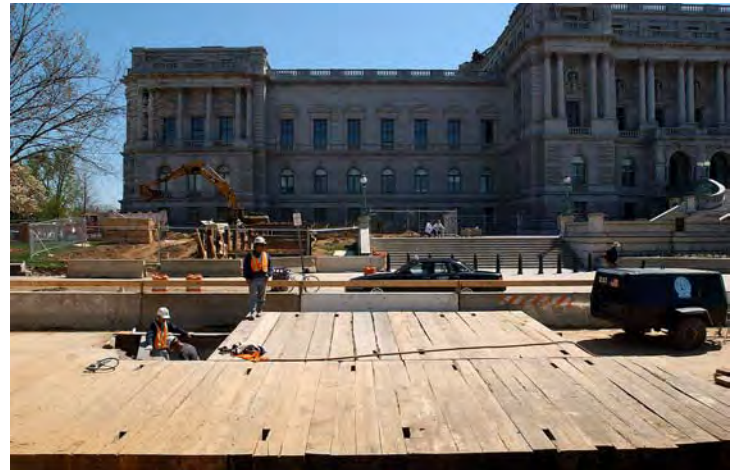
- Crews continue to erect structural steel inside the East Front Extension and continue with demolition activities to clear the way for elevator shafts, escalators, stairwells and new mechanical systems.

Truck Tunnel Construction

- Dump trucks are now bringing soil to the site to backfill the tunnel zone above the tunnel roof deck.
- In other areas, crews continue to assemble rebar and formwork for the tunnel walls and roof deck. Concrete pours and waterproofing applications will occur for the next several weeks.
- Workers will continue to remove the temporary bridge structure on Constitution Avenue that lies over the new truck tunnel just east of New Jersey Avenue NW. Once the bridge is removed, crews will backfill the zone, place asphalt for the road and re-establish sidewalks and curbs. In an effort to avoid impacts to parking, Constitution Avenue has been reduced from four lanes to three for the six-week restoration period.

Library of Congress (LOC) Tunnel

- A crew will continue constructing a temporary bridge along the western half of First Street over the excavation zone to allow excavation to occur without disrupting traffic (see photo at right).
- Excavation continues near the northwest corner of the LOC building.



A temporary wood and steel bridge along First Street SE will minimize impacts to traffic flow while excavation for the LOC tunnel occurs below.

Next Week – 4/26/04 - 4/30/04

East Front Plaza Work

- Crews will continue to waterproof portions of the CVC roof slab, conduct waterproofing tests, lay a 6-inch gravel bed and place the second or “topping” slab of concrete throughout the roof deck..
- Crews will continue to install utilities, build mechanical spaces, erect formwork and place concrete floor slabs for all three below-ground levels of the CVC.

East Front Extension

- Steel crews will continue to erect steel within the East Front concrete structure. Demolition of structural elements will continue on all levels within the East Front Extension and in the Carriageway below the East Front Center Steps. Demolition of major structural columns will continue inside the East Front transition zone. Major slab demolition for the two 25-passenger elevators is being completed within the north side of the East Front.

Truck Tunnel Construction

- Crews will continue to erect formwork, place concrete and waterproof the roof deck and walls in all areas of the truck tunnel construction zone. Close to 70 percent of the concrete for the tunnel is in place.
- Work to restore Constitution Avenue will continue for several weeks.

Library of Congress (LOC) Tunnel

- Excavation will continue in First Street SE and adjacent to the northwest corner of the LOC building.
- Crews will continue installing a temporary bridge along First Street over the tunnel excavation zone.

Formwork assembly and concrete placements will continue within the CVC site for the tunnel floor slab and walls.



During a break in the persistent rainfall last week, workers placed concrete into the formwork for the lower base of the East Front Center Steps.



After the concrete base had cured sufficiently, a worker chiseled away any significant imperfections. The original stone step plates, which had been carefully removed, will be reinstalled on the concrete base later this spring.

CVC construction photos April 12-16, 2004

*Heavy rainfall last week
penetrated two of the CVC
skylight openings.*

A worker guides a steel beam in place inside the East Front Extension.



A crew guides the placement of concrete over formwork for the floor slab of the Great Hall.



Above: A worker positions formwork for the floor slab of what will eventually become part of the CVC's 600-seat cafeteria.



Left: Workers guide a stack of wire mesh fabric on the CVC roof deck. The wire mesh will be used to help strengthen and bind the concrete for the roof deck's top slab.



Below left: A Sequence 2 contractor assembles granite paving stones in a bed of asphalt on the CVC roof deck. The grouping of the white and pink pavers will serve as a mock-up that will be used as a reference by the stone masons who eventually will set close to 200,000 pavers on the East Front Plaza.



Below right: Construction of the north and south walls of the Congressional Auditorium continues westward. The roof of the auditorium will serve as the East Capitol Street Extension.



United States Capitol Visitor Center Weekly Construction Summary



Prepared by the Capitol Visitor Center Project Office, Architect of the Capitol

April 26, 2004



Taken from atop the south tower crane, this bird's-eye view of the CVC roof deck shows waterproofing activities on the western half of the deck. Also clearly visible is the concrete foundation for the lower portion of the East Front Center Steps. Most of the northern half of the deck (top right quadrant of photo) has received the top concrete slab and the dark zones are areas that has been waterproofed and now await the placement of granite paving stones. Stone masons are expected to begin setting granite curb stones and paving stones in May.

This Week – Ongoing Work – 4/26/04 through 4/30/04

East Front Plaza Highlights:

- Concrete placements for the second roof deck slab will continue on the north side. Approximately 90 percent of the north roof deck now has the top slab in place.
- Crews will continue placing and testing waterproofing applications on the roof deck with a focus on the northern half of the deck where stone masons are expected to begin setting granite curb stones and pavers in May.
- Concrete placements will continue on all three levels of the CVC.
- Crews continue to build mechanical spaces, erect formwork, excavate and install utilities throughout the site.

East Front Extension (Inside the Capitol)

- Crews continue to erect structural steel inside the East Front Extension and continue with demolition activities to clear the way for elevator shafts, escalators, stairwells and new mechanical systems.

Truck Tunnel Construction

- Dump trucks continue to backfill the tunnel zone above the tunnel roof deck.
- In other areas, crews continue to assemble rebar and formwork for the tunnel walls and roof deck. Concrete pours and waterproofing applications will occur for the next several weeks.

- Workers will continue to remove the temporary bridge structure on Constitution Avenue that lies over the new truck tunnel just east of New Jersey Avenue NW. Once the bridge is removed, crews will backfill the zone, place asphalt for the road and re-establish sidewalks and curbs. In an effort to avoid impacts to parking, Constitution Avenue has been reduced from four lanes to three for the six-week restoration period.

Library of Congress (LOC) Tunnel

- A crew will continue constructing a temporary bridge along the western half of First Street over the excavation zone to allow excavation to occur without disrupting traffic.
- The bulk of excavation near the northwest corner of the LOC building has been completed and crews are now pouring concrete to establish the slab on grade, which lies approximately 20 feet below ground level.



Sequence 2 contractors are busy laying miles of electrical conduit piping within the reinforcing steel for the concrete floor slabs. The conduit must be spaced properly to ensure that there are no significant structural gaps within the concrete slabs.

Next Week – 5/3/04 - 5/07/04

East Front Plaza Work

- Stone masons may begin placing granite curb stones on the north side of the site.
- Crews will continue to waterproof portions of the CVC roof slab, conduct waterproofing tests, and place the second or “topping” slab of concrete throughout the roof deck.
- Crews will continue to install utilities, build mechanical spaces, erect formwork and place concrete floor slabs for all three below-ground levels of the CVC.

East Front Extension

- Steel crews will continue to erect steel within the East Front concrete structure. Demolition of structural elements will continue on all levels within the East Front Extension and in the Carriageway below the East Front Center Steps. Demolition of major structural columns will continue inside the East Front transition zone.



The north and south walls of the Congressional Auditorium continue to rise as construction progresses westward toward the facility’s main connection with the CVC at the center of the site.

Truck Tunnel Construction

- Crews will continue to erect formwork, place concrete and waterproof the roof deck and walls in all areas of the truck tunnel construction zone. Close to 70 percent of the concrete for the tunnel is in place.
- Work to restore Constitution Avenue will continue for several weeks and is expected to be completed by Memorial Day.

Library of Congress (LOC) Tunnel

- Excavation will continue in First Street SE.
- Crews will continue installing a temporary bridge along First Street over the tunnel excavation zone.
- Formwork assembly and concrete placements will continue near the LOC and within the CVC site for the tunnel floor slab and walls.



United States Capitol Visitor Center Weekly Construction Summary



Prepared by the Capitol Visitor Center Project Office, Architect of the Capitol

May 10, 2004



Crates of granite curb stones arrived last week from a quarry in Minnesota. This week, workers will begin laying the 500-lb.-stones on the north side of the CVC roof deck. Once the curb elevations are established, crews will then begin laying the first of 200,000 8-inch-square paving stones.

This Week – Ongoing Work – 5/10/04 through 5/14/04

East Front Plaza Highlights:

- The top concrete roof slab is now in place over the northern half of the CVC roof deck and stone masons will begin to lay out and set granite curb stones this week. Crews will begin setting 8-inch square paving stones in June.
- Concrete placements will continue on all three levels of the CVC and two major pours are scheduled this week.
- Crews continue to build mechanical spaces, erect formwork, pour concrete, and install utilities throughout the site.
- Emergency egress from the Rotunda has been established on the northern half of the CVC roof deck.

East Front Extension (Inside the Capitol)

- Crews continue to erect structural steel inside the East Front Extension and continue with demolition activities to clear the way for elevator shafts, escalators, stairwells and new mechanical systems.

Truck Tunnel Construction

- Dump trucks continue to backfill the tunnel zone above the tunnel roof deck.
- In other areas, crews continue to assemble rebar and formwork for the tunnel walls and roof deck. The concrete slab on grade is in place for most of the 1,000-linear-foot tunnel.
- Workers will continue to remove the temporary bridge structure on Constitution Avenue that lies over the new truck tunnel just east of New Jersey Avenue NW. Once the bridge is removed, crews will backfill the zone, place asphalt for the road and re-establish sidewalks and curbs.

Library of Congress (LOC) Tunnel

- A crew is expected to complete a temporary bridge along the western half of First Street over the excavation zone to allow excavation to occur without disrupting traffic. Work on the eastern half of First Street will begin next week.
- Excavation near the northwest corner of the LOC building has been completed and crews are now pouring concrete to establish the slab on grade, which lies approximately 20 feet below ground level.

Next Week – 5/17/04 - 5/21/04

East Front Plaza Work

- Stone masons will continue setting granite curb stone on the north side of the roof deck.
- Crews will continue to waterproof portions of the CVC roof slab, conduct waterproofing tests, and place the “topping” slab of concrete throughout the roof deck.
- Crews will continue to install utilities, build mechanical spaces, erect formwork and place concrete floor slabs for all three below-ground levels of the CVC.

East Front Extension

- Steel crews will continue to erect steel within the East Front concrete structure. Demolition of structural elements will continue on all levels within the East Front Extension and in the Carriageway below the East Front Center Steps. Demolition of major structural columns will continue inside the East Front transition zone.



In the southeastern quadrant of the CVC site, workers guide a large bucket containing concrete to its release point at the top of a column formwork structure.



The Congressional Auditorium continues to take shape at the eastern end of the CVC site.

Truck Tunnel Construction

- Crews will continue to erect formwork, place concrete and waterproof the roof deck and walls in all areas of the truck tunnel construction zone. Close to 75 percent of the concrete for the tunnel is in place.
- Work to restore Constitution Avenue will continue for several weeks and the bulk of the work will be completed by Memorial Day.

Library of Congress (LOC) Tunnel

- Crews will continue installing a temporary bridge along First Street over the tunnel excavation zone.
- Formwork assembly and concrete placements will continue near the LOC and within the CVC site for the tunnel floor slab and walls.



United States Capitol Visitor Center Weekly Construction Summary



Prepared by the Capitol Visitor Center Project Office, Architect of the Capitol

May 17, 2004



Milestone: On Tuesday, May 11, 2004, one of the first granite curb stones was laid in place on the CVC roof deck, marking the first transition of space from the Sequence 1 contractor (structure and foundation) to the Sequence 2 contractor (build-out and finishes). Architect of the Capitol Alan Hantman (back row, left) and senior members of the Centex Construction Group (Sequence 1 contractor), Manhattan Construction Co. (Sequence 2 contractor), RTKL (project designer) and Gilbane Building Co. (CVC construction manager) were all present to witness the event.

This Week – Ongoing Work – 5/17/04 through 5/21/04

East Front Plaza Highlights:

- Stone masons will begin to set granite curb stones this week.
- Concrete placements for floor slabs will occur on all three levels of the CVC and the southern half of the roof deck.
- Crews continue to build mechanical spaces, erect formwork, pour concrete, and install utilities throughout the site.
- Emergency egress from the Rotunda has been established on the northern half of the CVC roof deck.

East Front Extension (Inside the Capitol)

- Crews continue to erect structural steel inside the East Front Extension and continue with demolition activities to clear the way for elevator shafts, escalators, stairwells and new mechanical systems.

Truck Tunnel Construction

- Dump trucks continue to backfill the tunnel zone above the tunnel roof deck.
- In other areas, crews continue to assemble rebar and formwork for the tunnel walls and roof deck.
- Workers expect to complete utility installation above the tunnel this week and then begin removing the temporary bridge structure on Constitution Avenue. Once the bridge is removed, crews will backfill the zone, place asphalt for the road and re-establish sidewalks and curbs. Work is expected to be completed in this zone by June 7, 2004.

Library of Congress (LOC) Tunnel

- A temporary vehicle bridge is now in place along the western half of First Street over the excavation zone. Traffic flow has been shifted westward to flow over the bridge and excavation work is underway on the eastern half of First Street.
- Excavation near the northwest corner of the LOC building has been completed. Some demolition of an old pedestrian tunnel around the perimeter of the LOC is required before crews can pour the concrete for the slab on grade.



Workers measure a section of a waterproofing membrane that will be used to line a portion of the concrete structure of the Congressional Auditorium.

Next Week – 5/24/04 - 5/28/04

East Front Plaza Work

- Stone masons will continue setting granite curb stones on the north side of the roof deck.
- Crews will continue to waterproof portions of the CVC roof slab, conduct waterproofing tests, and place the top slab of concrete on the southern half of the roof deck.
- Crews will continue to install utilities, build mechanical spaces, erect formwork and place concrete floor slabs for all three below-ground levels of the CVC.
- A crane will arrive on the site and will be situated just east of the Congressional Auditorium construction zone near First Street NE/SE. The crane will be used to lift structural steel in place for the auditorium.

East Front Extension

- Steel crews will continue to erect steel within the East Front concrete structure. Demolition of structural elements will continue on all levels within the East Front Extension and in the Carriageway below the East Front Center Steps. Demolition of major structural columns will continue inside the East Front transition zone.



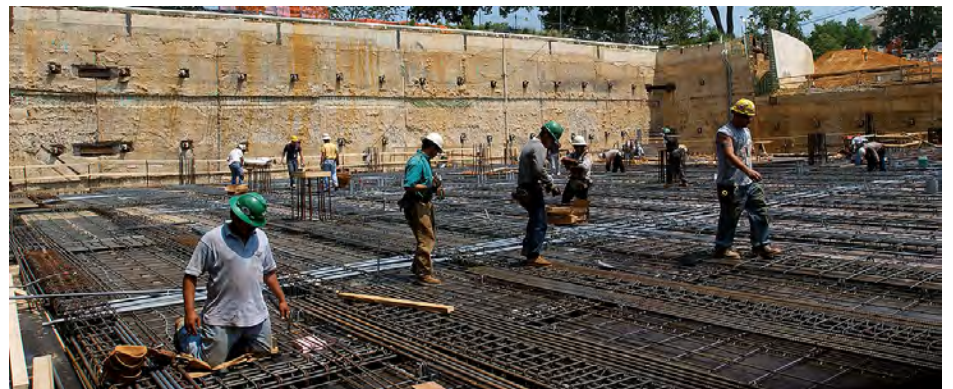
A blow-torch helps to seal a waterproofing membrane.

Truck Tunnel Construction

- Crews will continue to erect formwork, place concrete and waterproof the roof deck and walls in all areas of the truck tunnel construction zone. Close to 75 percent of the concrete for the tunnel is in place.
- Once new utility work is inspected by the Washington Sewer Authority, crews will remove the temporary bridge and backfill the zone along Constitution Ave.

Library of Congress (LOC) Tunnel

- Crews will continue excavating the eastern half of First Street SE above the LOC tunnel zone.
- Formwork assembly and concrete placements will continue near the LOC and within the CVC site for the tunnel floor slab and walls.



Workers assemble the lower level formwork and reinforcing steel in the eastern half of the CVC site.



United States Capitol Visitor Center Weekly Construction Summary



Prepared by the Capitol Visitor Center Project Office, Architect of the Capitol

May 24, 2004



Work continues on the lower level of the CVC in an area that will be occupied by a 600-seat dining facility. Concrete placements and formwork assembly continue to be the dominant activities throughout the site. Steel will be erected next week across the Congressional Auditorium (top center).

This Week – Ongoing Work – 5/24/04 through 5/28/04

East Front Plaza Highlights:

- Stone masons continue to set granite curb stones on the north side of the CVC roof deck.
- Concrete placements for floor slabs will occur on all three levels below the roof deck.
- Concrete has been placed around the House Steps connecting the steps to the East Plaza.
- Crews continue to build mechanical spaces, erect formwork, pour concrete, and install utilities throughout the site.

East Front Extension (Inside the Capitol)

- Crews continue to erect structural steel inside the East Front Extension and continue with demolition activities to clear the way for elevator shafts, escalators, stairwells and new mechanical systems.
- During the recess this week, crews will work two 10-hour shifts each day and work will continue into the weekend.

Truck Tunnel Construction

- Dump trucks continue to backfill the tunnel zone above the tunnel roof deck.
- In other areas, crews continue to assemble rebar and formwork for the tunnel walls and roof deck.
- Workers expect to complete utility installation above the tunnel this week and then begin removing the temporary bridge structure on Constitution Avenue. Once the bridge is removed, crews will backfill the zone, place asphalt for the road and re-establish sidewalks and curbs. Work has been delayed for several weeks and is now expected to be completed in this zone by mid-July.

Library of Congress (LOC) Tunnel

- Demolition of the street and sidewalk is complete along the eastern half of First Street SE above the tunnel construction zone. Crews will begin driving piles this week in First Street to provide earth retention for the excavation effort in the eastern half of the street. A temporary vehicle bridge has already been constructed above the tunnel zone along the western half of First Street.
- Excavation near the northwest corner of the LOC building has been completed. Demolition of an old pedestrian tunnel around the perimeter of the LOC has also been completed.
- The first portions of the LOC tunnel slab-on-grade have been placed within the CVC site at the entrance to the tunnel.



Inside the East Front, a worker uses a chain pulley to lift a steel beam in place.

Next Week – 5/31/04 - 6/04/04

East Front Plaza Work

- Stone masons will continue setting granite curb stones on the north side of the roof deck.
- Crews will continue to waterproof portions of the CVC roof slab, conduct waterproofing tests, and place the top slab of concrete on the southern half of the roof deck.
- Crews will continue to install utilities, build mechanical spaces, erect formwork and place concrete floor slabs for all three below-ground levels of the CVC.
- A crane will arrive on the site and will be situated just east of the Congressional Auditorium construction zone near First Street NE/SE. The crane will be used to lift structural steel in place for the auditorium.

East Front Extension

- Steel crews will continue to erect steel within the East Front concrete structure. Demolition of structural elements will continue on all levels within the East Front Extension and in the Carriageway below the East Front Center Steps. Demolition of major structural columns will continue inside the East Front transition zone.



Most of the concrete has been placed for the roof slab and walls of the CVC truck tunnel.

Truck Tunnel Construction

- Crews will continue to erect formwork, place concrete and waterproof the roof deck and walls in all areas of the truck tunnel construction zone. Close to 75 percent of the concrete for the tunnel is in place.
- Work related to utility lines that cross over the truck tunnel along Constitution may be complete and inspected by the Washington Sewer Authority. Crews will then remove the temporary bridge and backfill the zone.

Library of Congress (LOC) Tunnel

- Crews will continue driving piles in the eastern half of First Street SE within the LOC tunnel.
- Formwork assembly and concrete placements will continue near the LOC and within the CVC site for the tunnel floor slab and walls.



United States Capitol Visitor Center Weekly Construction Summary



Prepared by the Capitol Visitor Center Project Office, Architect of the Capitol

June 1, 2004



A view of the CVC project area shows the western half of the roof deck in place and waterproofed while formwork assembly continues at the eastern end. Just north of the center steps (foreground, right) stone masons will continue to set 500-lb. granite curb stones.

This Week – Ongoing Work – 5/31/04 through 6/04/04

East Front Plaza Highlights:

- Stone masons continue to set granite curb stones on the north side of the CVC roof deck.
- Concrete placements for floor slabs will occur on the roof deck and all three levels below.
- Crews continue to build mechanical spaces, erect formwork, pour concrete, and install utilities throughout the site.
- A large crane will be situated just east of the Congressional Auditorium construction zone. The crane will be used to erect steel columns and beams that will form the Auditorium roof and which will serve, eventually, as the base for the East Capitol Street Extension.

East Front Extension (Inside the Capitol)

- Crews continue to erect structural steel inside the East Front Extension and continue with demolition activities to clear the way for elevator shafts, escalators, stairwells and new mechanical systems.

Truck Tunnel Construction

- Dump trucks continue to backfill the tunnel zone above the tunnel roof deck.
- In other areas, crews continue to assemble rebar and formwork for the tunnel walls and roof deck.
- Workers expect to complete utility installation above the tunnel this week and then begin removing the temporary bridge structure on Constitution Avenue. Once the bridge is removed, crews will backfill the zone, place asphalt for the road and re-establish sidewalks and curbs. Work has been delayed for several weeks and is now expected to be completed in this zone by mid-July.



After the holiday weekend, crews returned June 1 to continue placing concrete (top left of photo) and assembling formwork for the upper level floor slab (center).

Library of Congress (LOC) Tunnel

- Crews will continue driving piles this week in First Street SE to provide earth retention for the excavation effort in the eastern half of the street. A temporary vehicle bridge has already been constructed above the tunnel zone along the western half of First Street SE.
- Excavation near the northwest corner of the LOC building has been completed.
- The first portions of the LOC tunnel slab-on-grade have been placed within the CVC site at the entrance to the tunnel and formwork for the tunnel walls is being erected.

Next Week – 6/07/04 - 6/11/04

East Front Plaza Work

- Stone masons will continue setting granite curb stones on the north side of the roof deck.
- Crews will continue to waterproof portions of the CVC roof slab, conduct waterproofing tests, and complete the placement of the top slab of concrete on the southern half of the roof deck.
- Crews will continue to install utilities, build mechanical spaces, erect formwork and place concrete floor slabs for all three below-ground levels of the CVC.
- Crews will continue to erect steel in place for the Congressional Auditorium.

East Front Extension

- Steel crews will continue to erect steel within the East Front concrete structure. Demolition of structural elements will continue on all levels within the East Front Extension and in the Carriageway below the East Front Center Steps. Demolition of major structural columns will continue inside the East Front transition zone.

Truck Tunnel Construction

- Crews will continue to erect formwork, place concrete and waterproof the roof deck and walls in all areas of the truck tunnel construction zone. Close to 75 percent of the concrete for the tunnel is in place.
- Work related to utility lines that cross over the truck tunnel along Constitution will be completed. Crews will then remove the temporary bridge and backfill the zone.

Library of Congress (LOC) Tunnel

- Crews will continue driving piles in the eastern half of First Street SE within the LOC tunnel work zone.
- Formwork assembly and concrete placements will continue near the LOC and within the CVC site for the tunnel floor slab and walls.

If you have any questions about the Capitol Visitor Center Project, please contact Tom Fontana, CVC project communications officer, at (202) 228-1310, or by e-mail at fontana@ao.gov. You can read this document and previous editions on the CVC web site at www.aoc.gov.



United States Capitol Visitor Center Weekly Construction Summary



Prepared by the Capitol Visitor Center Project Office, Architect of the Capitol

June 7, 2004



In the service level of the CVC's southeast quadrant, crews began, for the first time, to set masonry blocks that will define interior space in this zone.

This Week – Ongoing Work – 6/07/04 through 6/11/04

NOTE: All construction activities this week will cease Wednesday at 4 P.M. due to the lying-in-state of President Reagan in the Capitol.

East Front Plaza Highlights:

- The last major concrete placement for the western half of the CVC roof deck was completed late last week.
- Masons have begun to set masonry blocks in the southeast quadrant of the service level (*see photo above*).
- Crews continue to build mechanical spaces, erect formwork, pour concrete, and install utilities throughout the site.
- Steel continues to be erected for the structure and roof of the Congressional Auditorium. Several columns and the first crossbeam spanning the facility are already in place (*see top photo on opposite page*).
- Stone masons will continue placing the original stone steps on the East Front Center Steps (*see photo on opposite page*).
- A 20'x20' granite paving mock-up has been completed just north of the Center Steps. This mock-up, when approved, will establish the quality threshold for the remaining 200,000 paving stones that will be placed on the plaza.

East Front Extension (Inside the Capitol)

- Crews continue to erect structural steel inside the East Front Extension and continue with demolition activities to clear the way for elevator shafts, escalators, stairwells and new mechanical systems.
- Workers continue waterproofing the zone between the existing East Front and the newly formed plaza deck.

Truck Tunnel Construction

- Crews will place concrete for a mud-slab over the final 135 feet of tunnel bottom between the Old Russell Tunnel and the truck tunnel's opening into the CVC. This slab will then be waterproofed and serve as the base for the slab on grade.
- Dump trucks continue to backfill the tunnel zone above the tunnel roof deck.
- Workers will continue utility installation above the tunnel zone at New Jersey Ave. and Constitution Ave. and then backfill that zone, place asphalt for the road and re-establish sidewalks and curbs. Difficult utility work has delayed the restoration of Constitution Ave. NW for several weeks. This work is now expected to be completed by early August.

Library of Congress (LOC) Tunnel

- Crews have completed driving piles in First Street SE to provide earth retention for the excavation effort in the eastern half of the street. A temporary vehicle bridge made of large wood beams is being constructed along the eastern half of First Street SE. A similar bridge has already been constructed above the tunnel zone along the western half of First Street SE.
- Excavation near the northwest corner of the LOC building has been completed.
- The first portions of the LOC tunnel slab-on-grade have been placed within the CVC site at the entrance to the tunnel and the two-story

formwork for the tunnel walls in this zone has been erected.



Late last week, steel workers began erecting columns and crossbeams for the Congressional Auditorium.

Next Week – 6/14/04 - 6/18/04

East Front Plaza Work

- Pending approval of the paving stone mock-up, stone masons will resume setting pavers on the north side of the site.
- Crews will continue to waterproof the last portions of the CVC roof slab, conduct waterproofing tests, and complete the placement of concrete within the small remaining portions of the roof deck's top slab near the perimeter of the site.
- Crews will continue to install utilities, build mechanical spaces, erect formwork and place concrete floor slabs for all three below-ground levels of the CVC.
- Crews will continue to erect steel in place for the Congressional Auditorium.

East Front Extension

- Steel crews will continue to erect steel within the East Front concrete structure. Demolition of structural elements will continue on all levels within the East Front Extension and in the Carriageway below the East Front Center Steps.

Truck Tunnel Construction

- Crews will continue to erect formwork, place concrete and waterproof the roof deck and walls in all areas of the truck tunnel construction zone. Close to 75 percent of the concrete for the tunnel is in place.
- Work related to utility lines that cross over the truck tunnel along Constitution is expected to be completed. Crews will then begin to remove the temporary bridge and backfill the zone. Restoration activities are expected to be completed in August.



Library of Congress (LOC) Tunnel

- Crews are expected to complete the temporary bridge along First Street SE over the LOC tunnel work zone and traffic flow in both directions should return to normal.
- Formwork assembly and concrete placements will continue near the LOC and within the CVC site for the tunnel floor slab and walls.

Stone masons began setting the stepping stones for the East Front Center Steps. The lower eight steps had been removed two years ago to clear the way for excavation along the east face of the Capitol.

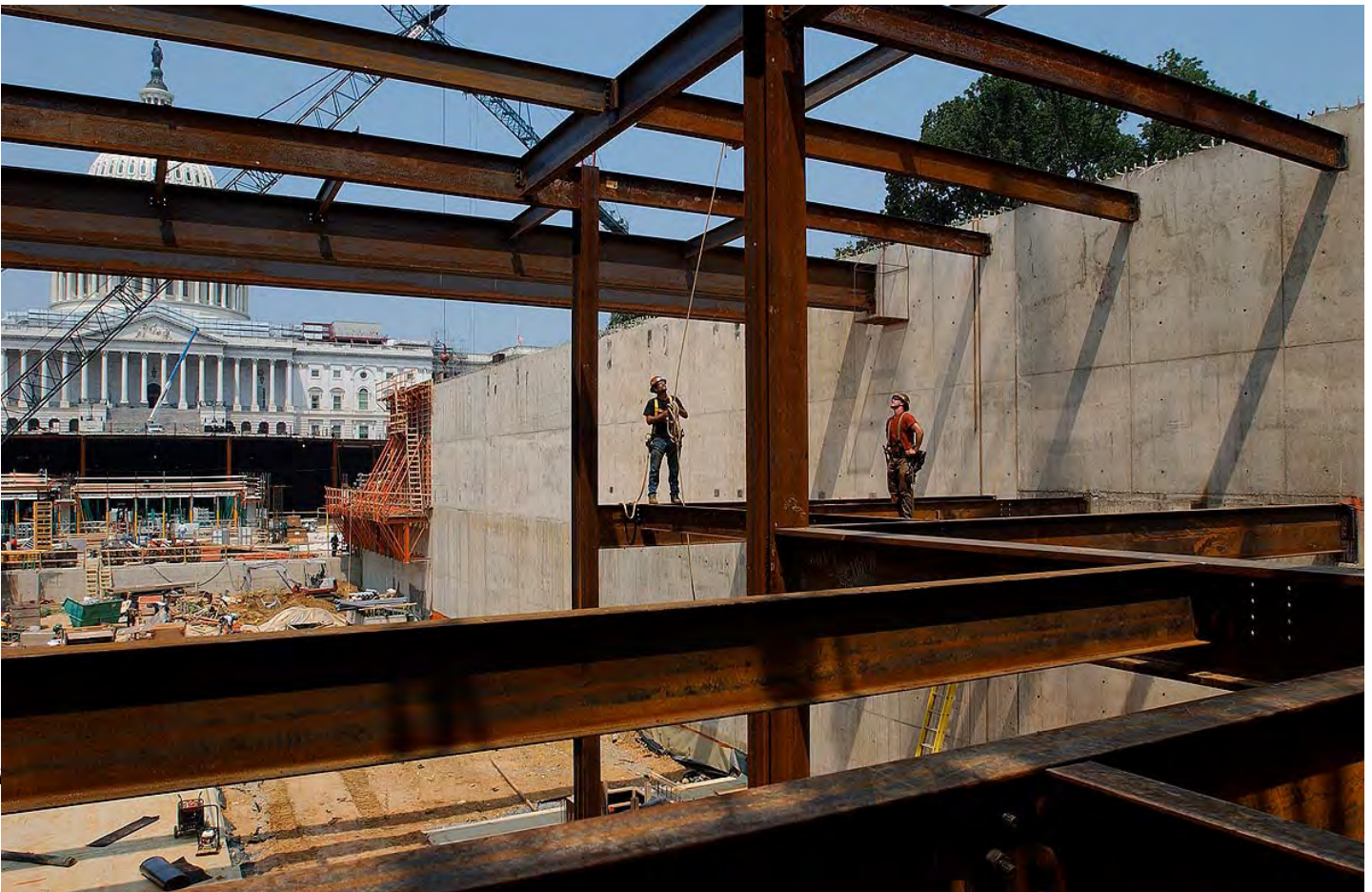


United States Capitol Visitor Center Weekly Construction Summary



Prepared by the Capitol Visitor Center Project Office, Architect of the Capitol

June 14, 2004



Steel workers will continue erecting columns and crossbeams for the Congressional Auditorium. When completed, the roof of the auditorium will re-establish the East Capitol Street Extension, which will, in turn, serve as the central promenade to the restored East Front Plaza.

This Week – Ongoing Work – 6/14/04 through 6/18/04

East Front Plaza Highlights:

- Waterproofing continues on the southern half of the roof deck and is nearing completion.
- Crews continue to build mechanical spaces, erect formwork, pour concrete, and install utilities throughout the site.
- Steel continues to be erected for the structure and roof of the Congressional Auditorium. Several crossbeams have now been installed. The roof of the Auditorium will serve as the East Capitol Street Extension.
- Stone masons continue placing the original stone slabs for the East Front Center Steps.
- A 20'x20' granite paving mock-up set last week has been removed and will be re-installed next week once a new setting process is established. The first mock-up did not meet quality thresholds related to surface uniformity. The mock-up will establish the quality threshold for the remaining 200,000 paving stones that will be placed on the plaza.

East Front Extension (Inside the Capitol)

- Crews continue to erect structural steel inside the East Front Extension and continue with demolition activities to clear the way for elevator shafts, escalators, stairwells and new mechanical systems.
- Workers continue waterproofing the zone between the existing East Front and the newly formed plaza deck.

Truck Tunnel Construction

- Crews will continue placing concrete for a mud-slab over the final 135 feet of tunnel bottom between the Old Russell Tunnel and the truck tunnel's opening into the CVC. This slab will then be waterproofed and serve as the base for the slab on grade.

- Dump trucks continue to backfill the tunnel zone above the tunnel roof deck.
- Workers will continue utility installation above the tunnel zone at New Jersey Ave. and Constitution Ave. and then backfill that zone, place asphalt for the road and re-establish sidewalks and curbs. Difficult utility work has delayed the restoration of Constitution Ave. NW for several weeks. This work is now expected to be completed by early August.

Library of Congress (LOC) Tunnel

- A temporary vehicle bridge made of large wood beams has been constructed along the eastern half of First Street SE. A similar bridge has already been constructed above the tunnel zone along the western half of First Street SE.
- Excavation near the northwest corner of the LOC building has been completed.
- The first portions of the LOC tunnel slab-on-grade have been placed within the CVC site at the entrance to the tunnel and crews will continue forming the two-story tunnel walls near the CVC entrance.



A view of the Library of Congress (LOC) pedestrian tunnel from the roof of the LOC.

Next Week – 6/21/04 - 6/25/04

East Front Plaza Work

- Pending approval of the paving stone mock-up, stone masons may resume setting pavers on the north side of the site.
- Crews will continue to waterproof the last portions of the CVC roof slab, conduct waterproofing tests, and complete the placement of concrete within the small remaining portions of the roof deck's top slab near the perimeter of the site.
- Crews will continue to install utilities, build mechanical spaces, erect formwork and place concrete floor slabs for all three below-ground levels of the CVC.
- Crews will continue to erect steel in place for the Congressional Auditorium.

East Front Extension

- Steel crews will continue to erect steel within the East Front concrete structure. Demolition of structural elements will continue on all levels within the East Front Extension and in the Carriageway below the East Front Center Steps.



Workers place concrete in the northwest quadrant of the CVC service level.

Truck Tunnel Construction

- Crews will continue to erect formwork, place concrete and waterproof the roof deck and walls in all areas of the truck tunnel construction zone. Close to 75 percent of the concrete for the tunnel is in place.
- Work related to utility lines that cross over the truck tunnel along Constitution may be completed. Crews will then begin to remove the temporary bridge and backfill the zone. Restoration activities are expected to be completed in August.

Library of Congress (LOC) Tunnel

- Formwork assembly and concrete placements will continue near the LOC and within the CVC site for the tunnel floor slab and walls.



United States Capitol Visitor Center Weekly Construction Summary



Prepared by the Capitol Visitor Center Project Office, Architect of the Capitol

June 21, 2004



Looking east through the Great Hall's south skylight opening, workers continue to erect formwork for the upper level floor slab.

This Week – Ongoing Work – 6/21/04 through 6/25/04

East Front Plaza Highlights:

- Crews continue to build mechanical spaces, erect formwork, pour concrete, and install utilities throughout the site.
- Steel continues to be erected for the structure and roof of the Congressional Auditorium.
- Stone masons will complete the placement of the original stone slabs for the East Front Center Steps.
- A second 20'x20' granite paving mock-up has been completed and will be reviewed Tuesday afternoon by the Architect of the Capitol. If the mock-up is approved, two stone crews will begin working simultaneously on both the north and south sides of the plaza. Meanwhile, workers continue placing the 500-lb. granite curb stones on the north side of the plaza.
- Waterproofing continues on the few remaining portions of exposed concrete on the north and south ends of the roof deck.

East Front Extension (Inside the Capitol)

- Crews continue to erect structural steel inside the East Front Extension and continue with demolition activities to clear the way for elevator shafts, escalators, stairwells and new mechanical systems.
- Workers continue backfilling the zone between the existing East Front and the newly formed plaza deck.

Truck Tunnel Construction

- Crews will continue placing concrete for the remaining portion of the tunnel south of the existing Russell Tunnel.
- Workers will complete utility installation above the tunnel zone at New Jersey Ave. and Constitution Ave. this week and then backfill that zone, place asphalt for the road and re-establish sidewalks and curbs.
- A concrete slab has been placed on the south side of Constitution Ave. and all three lanes of traffic are expected to be diverted on the new slab later this week, clearing the way for backfilling and paving activities on the north side of Constitution Ave. NW. Full restoration of Constitution Ave. at New Jersey Ave. NW, including sidewalks and curbs, is expected to be completed by early August.

Library of Congress (LOC) Tunnel

- Excavation near the northwest corner of the LOC building has been completed.
- Crews will continue placing concrete for the slab-on-grade within the CVC site and workers will continue forming the two-story tunnel walls near the CVC entrance.
- Traffic flow and pedestrian access will continue along the western half of First Street SE for several weeks.



This week, a crew will complete placement of the stone slabs for the East Front Center Steps.

Next Week – 6/28/04 - 7/2/04

East Front Plaza Work

- Pending approval of the paving stone mock-up, stone masons will continue setting pavers on the CVC roof deck.
- Crews will continue to waterproof the last portions of the CVC roof slab, conduct waterproofing tests, and complete the placement of concrete within the small remaining portions of the roof deck's top slab near the perimeter of the site.
- Crews will continue to install utilities, build mechanical spaces, erect formwork and place concrete floor slabs for all three below-ground levels of the CVC.
- Steel will continue to be erected for the roof and mezzanine of the Congressional Auditorium.

East Front Extension

- Steel crews will continue to erect steel within the East Front concrete structure. Demolition of structural elements will continue on all levels within the East Front Extension and in the Carriageway below the East Front Center Steps.

Truck Tunnel Construction

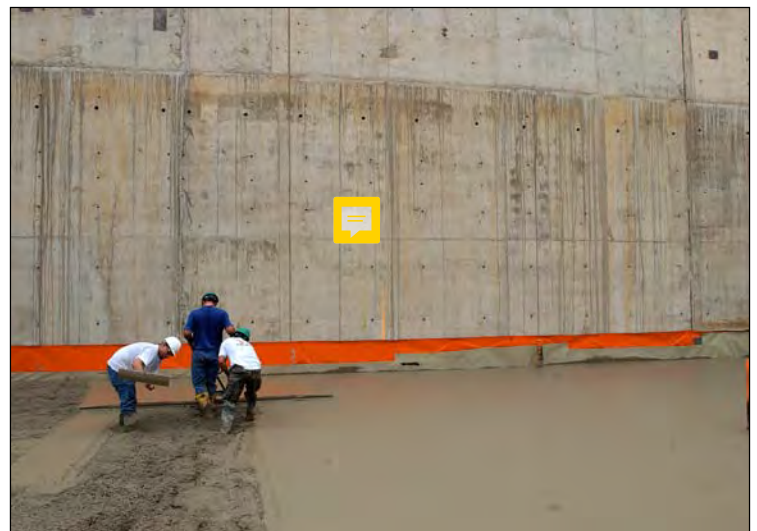
- Workers will continue to erect formwork, place concrete and waterproof the roof deck and walls in all areas of the truck tunnel construction zone. More than 75 percent of the concrete for the tunnel is in place. Crews will begin removing the temporary bridge and backfill the zone along northern half of Constitution Ave.

Library of Congress (LOC) Tunnel

- Formwork assembly, concrete placements and excavation will continue in various zones along the LOC tunnel route.



In the eastern half of the CVC site, workers assemble the formwork for the upper half of the Congressional Auditorium's south wall.



Workers smooth out the concrete for the floor slab of the Congressional Auditorium. The sloping floor will accommodate theater-like seating.



United States Capitol Visitor Center Weekly Construction Summary



Prepared by the Capitol Visitor Center Project Office, Architect of the Capitol

June 28, 2004



Sunlight streams through a CVC skylight opening and illuminates a portion of lower-level formwork in the southwest quadrant of the site.

This Week – Ongoing Work – 6/28/04 through 7/2/04

East Front Plaza Highlights:

- Crews continue to build mechanical spaces, erect formwork, pour concrete, and install utilities throughout the site.
- Steel continues to be erected for the structure and roof of the Congressional Auditorium and steel roof decking sheets now cover the easternmost portion of the facility.
- A 20'x20' granite paving mock-up was approved by the Architect of the Capitol last week and stone masons, working out from the mock-up, have begun laying the pavers on northern half of the CVC roof deck.

East Front Extension (Inside the Capitol)

- Crews continue to erect structural steel inside the East Front Extension and continue with demolition activities to clear the way for elevator shafts, escalators, stairwells and new mechanical systems.
- Two 8-hour work shifts will occur each day this week during the recess. Normal work hours will resume Tuesday, July 6.

Truck Tunnel Construction

- Crews will continue placing concrete for the remaining portion of the tunnel south of the existing Russell Tunnel.
- Utility installation has been completed above the tunnel zone at New Jersey Ave. and Constitution Ave. and crews will continue to backfill the zone, place asphalt for the road and re-establish sidewalks and curbs.
- A concrete slab has been placed on the south side of Constitution Ave. to accommodate three lanes of traffic while crews complete demolition, backfilling and paving activities on the north side of Constitution Ave. NW. Full restoration of Constitution Ave. at New Jersey Ave. NW, including sidewalks and curbs, is expected to be completed by early August.

Library of Congress (LOC) Tunnel

- Crews will continue placing concrete for the slab-on-grade within the CVC site and workers will continue pouring concrete for the two-story tunnel walls near the CVC entrance. The upper level floor slab at the tunnel entrance has been placed.
- Traffic flow and pedestrian access will continue along the western half of First Street SE for several weeks.

Next Week – 7/05/04 - 7/09/04

East Front Plaza Work

- Stone masons will continue placing the granite pavers and curb stones on CVC roof deck.
- Crews will continue to waterproof the last portions of the CVC roof slab, conduct waterproofing tests, and complete the placement of concrete within the small remaining portions of the roof deck's top slab near the perimeter of the site.
- Workers will continue to install utilities, build mechanical spaces, erect formwork and place concrete floor slabs for all three below-ground levels of the CVC.
- Steel will continue to be erected for the roof and mezzanine of the Congressional Auditorium.

East Front Extension

- Steel crews will continue to erect steel within the East Front concrete structure. Demolition of structural elements will continue on all levels within the East Front Extension and in the Carriageway below the East Front Center Steps. Work will return to one shift a day.

Truck Tunnel Construction

- Workers will continue to erect formwork, place concrete and waterproof the roof deck and walls in all areas of the truck tunnel construction zone. A major concrete pour will occur south of the old Russell Tunnel.
- Crews will continue to backfill the zone along northern half of Constitution Ave. in an effort to have all four lanes of traffic re-established by mid-July. Sidewalks and curbs are expected to be in place by the first week of August.



A forklift raises formwork beams in place for the floor slab of the CVC Exhibition Gallery. The 16,500 square-foot Gallery will span nearly 300 feet across and will have more than twice the floor space of the Capitol's Rotunda.



Library of Congress (LOC) Tunnel

- Formwork assembly, concrete Placements, waterproofing and excavation will continue in various zones along the LOC tunnel route.
- Utility work will continue in the east sidewalk along First Street SE and is expected to be completed within two weeks.

At the east central area of the CVC site, the steel structure of the Congressional Auditorium continues to take shape while workers continue to set the formwork for the south wall (center of photo). This week, a crew begins to lay corrugated steel roof decking sheets on the crossbeams.



United States Capitol Visitor Center Weekly Construction Summary



Prepared by the Capitol Visitor Center Project Office, Architect of the Capitol

April 19, 2004



Sequence 1 crews continue to assemble the formwork for the Lower Level floor slab. The area shown here will be home to two 250-seat orientation theaters. Inside the theaters, visitors will enjoy a short film about the Capitol and the Congress before beginning their tour.

This Week – Ongoing Work – 4/19/04 through 4/23/04

East Front Plaza Highlights:

- Concrete placements for the second roof deck slab will continue on the north side of the site over the next several weeks. Approximately 85 percent of the north roof deck now has the top slab in place.
- Crews will continue placing and testing waterproofing applications on the roof deck.
- Concrete placements will continue on all three levels of the CVC and the concrete floor slab for the Great Hall is now substantially complete.
- Crews continue to build mechanical spaces, erect formwork, excavate and install utilities throughout the site.

East Front Extension (Inside the Capitol)

- Crews continue to erect structural steel inside the East Front Extension and continue with demolition activities to clear the way for elevator shafts, escalators, stairwells and new mechanical systems.

Truck Tunnel Construction

- Dump trucks are now bringing soil to the site to backfill the tunnel zone above the tunnel roof deck.
- In other areas, crews continue to assemble rebar and formwork for the tunnel walls and roof deck. Concrete pours and waterproofing applications will occur for the next several weeks.
- Workers will continue to remove the temporary bridge structure on Constitution Avenue that lies over the new truck tunnel just east of New Jersey Avenue NW. Once the bridge is removed, crews will backfill the zone, place asphalt for the road and re-establish sidewalks and curbs. In an effort to avoid impacts to parking, Constitution Avenue has been reduced from four lanes to three for the six-week restoration period.

Library of Congress (LOC) Tunnel

- A crew will continue constructing a temporary bridge along the western half of First Street over the excavation zone to allow excavation to occur without disrupting traffic (see photo at right).
- Excavation continues near the northwest corner of the LOC building.



A temporary wood and steel bridge along First Street SE will minimize impacts to traffic flow while excavation for the LOC tunnel occurs below.

Next Week – 4/26/04 - 4/30/04

East Front Plaza Work

- Crews will continue to waterproof portions of the CVC roof slab, conduct waterproofing tests, lay a 6-inch gravel bed and place the second or “topping” slab of concrete throughout the roof deck..
- Crews will continue to install utilities, build mechanical spaces, erect formwork and place concrete floor slabs for all three below-ground levels of the CVC.

East Front Extension

- Steel crews will continue to erect steel within the East Front concrete structure. Demolition of structural elements will continue on all levels within the East Front Extension and in the Carriageway below the East Front Center Steps. Demolition of major structural columns will continue inside the East Front transition zone. Major slab demolition for the two 25-passenger elevators is being completed within the north side of the East Front.

Truck Tunnel Construction

- Crews will continue to erect formwork, place concrete and waterproof the roof deck and walls in all areas of the truck tunnel construction zone. Close to 70 percent of the concrete for the tunnel is in place.
- Work to restore Constitution Avenue will continue for several weeks.

Library of Congress (LOC) Tunnel

- Excavation will continue in First Street SE and adjacent to the northwest corner of the LOC building.
- Crews will continue installing a temporary bridge along First Street over the tunnel excavation zone.

Formwork assembly and concrete placements will continue within the CVC site for the tunnel floor slab and walls.



During a break in the persistent rainfall last week, workers placed concrete into the formwork for the lower base of the East Front Center Steps.



After the concrete base had cured sufficiently, a worker chiseled away any significant imperfections. The original stone step plates, which had been carefully removed, will be reinstalled on the concrete base later this spring.

CVC construction photos April 12-16, 2004

*Heavy rainfall last week
penetrated two of the CVC
skylight openings.*

A worker guides a steel beam in place inside the East Front Extension.



A crew guides the placement of concrete over formwork for the floor slab of the Great Hall.



Above: A worker positions formwork for the floor slab of what will eventually become part of the CVC's 600-seat cafeteria.



Left: Workers guide a stack of wire mesh fabric on the CVC roof deck. The wire mesh will be used to help strengthen and bind the concrete for the roof deck's top slab.



Below left: A Sequence 2 contractor assembles granite paving stones in a bed of asphalt on the CVC roof deck. The grouping of the white and pink pavers will serve as a mock-up that will be used as a reference by the stone masons who eventually will set close to 200,000 pavers on the East Front Plaza.

Below right: Construction of the north and south walls of the Congressional Auditorium continues westward. The roof of the auditorium will serve as the East Capitol Street Extension.





United States Capitol Visitor Center Weekly Construction Summary



Prepared by the Capitol Visitor Center Project Office, Architect of the Capitol

July 12, 2004



A view of the eastern half of the CVC project site shows crews assembling the formwork for the upper level floor slab. The bulk of this zone will house the entrance screening facility. To the upper left is the Congressional Auditorium and at right, a portion of the curved wall overlooking the Great Hall is visible.

This Week – Ongoing Work – 7/12/04 through 7/16/04

East Front Plaza Highlights:

- Crews continue to build mechanical spaces, erect formwork, pour concrete, and install utilities throughout the site.
- Steel continues to be erected for the roof and mezzanine of the Congressional Auditorium.
- Stone masons have resumed laying granite pavers near the East Front center steps.

East Front Extension (Inside the Capitol)

- Crews continue to erect structural steel inside the East Front Extension and continue with demolition activities to clear the way for elevator shafts, escalators, stairwells and new mechanical systems.

Truck Tunnel Construction/Constitution Avenue

- Crews will continue placing concrete for the remaining portion of the tunnel south of the existing Russell Tunnel.
- Constitution Ave. at New Jersey Ave. NW is now open to four lanes of traffic. The parking lanes will be available at the end of July. Full restoration, including sidewalks and curbs, is expected to be completed by early August.

Library of Congress (LOC) Tunnel

- Crews will continue placing concrete for the slab-on-grade within the CVC site and workers will continue assembling formwork for the tunnel walls moving east from the tunnel's entrance, which is near the center of the CVC site. The upper level floor slab at the tunnel entrance has been placed.
- Traffic flow and pedestrian access will continue along the western half of First Street SE for several weeks as utility work continues along the sidewalk along the east side of First Street.

Next Week – 7/19/04 - 7/23/04

East Front Plaza Work

- Stone masons will continue placing the granite pavers and curb stones on the CVC roof deck.
- Workers will continue to install utilities, build mechanical spaces, erect formwork and place concrete floor slabs for all three levels of the CVC. Steel rebar is being assembled for the eastern half of the upper level floor slab.
- Steel will continue to be erected for the roof and mezzanine of the Congressional Auditorium (CA) and concrete will be placed for the floor slab. The last remaining portion of the CA south wall will be completed this week.

East Front Extension

- Steel crews will continue to erect steel within the East Front concrete structure. Demolition of structural elements will continue on all levels within the East Front Extension and in the Carriageway below the East Front Center Steps.

Truck Tunnel Construction

- Workers will continue to erect formwork, place concrete and waterproof the roof deck and walls along the southern end of the tunnel zone.

Library of Congress (LOC) Tunnel

- Formwork assembly, concrete placements, waterproofing and excavation will continue in various zones along the LOC tunnel route.
- Utility work will continue in the east sidewalk along First Street SE.



Architect of the Capitol Alan Hantman (right) discusses the East Front plaza design with House Administration Committee Chairman Bob Ney during a Visitor Center project site tour on July 9, 2004.



During a recent CVC site tour for U.S. Capitol Police Chief Terrance Gainer (center), the Architect of the Capitol, Alan Hantman (right), pointed out the primary transition zone between the Visitor Center and the Capitol. USCP Assistant Chief James Rohan looks on.



Astone crew continues laying granite pavers near the East Front Center Steps. By changing the paving bed from asphalt to a much more forgiving bed of sand and concrete, workers are able to tamp the stones (see inset) and thereby offset any surface variations in the concrete roof deck below and also compensate for minor fluctuations in the size of each paver.



United States Capitol Visitor Center Weekly Construction Summary



Prepared by the Capitol Visitor Center Project Office, Architect of the Capitol

July 19, 2004



A view of the CVC's upper level floor slab (foreground) also shows the formwork for some of the columns that will support the roof deck over the eastern half of the site. Inset: A worker guides the placement of a rebar cage into a column formwork structure near the balcony of the Great Hall.

This Week – Ongoing Work – 7/19/04 through 7/23/04.

East Front Plaza Highlights:

- Crews continue to build mechanical spaces, erect formwork, pour concrete, and install utilities throughout the site.
- Steel continues to be erected for the roof and mezzanine of the Congressional Auditorium. The north and south concrete walls have been completed and the remaining formwork will be removed this week.
- Stone masons continue laying granite pavers near the center of the CVC roof deck. An area of approximately 7,500 square feet of paving has been completed.

East Front Extension (Inside the Capitol)

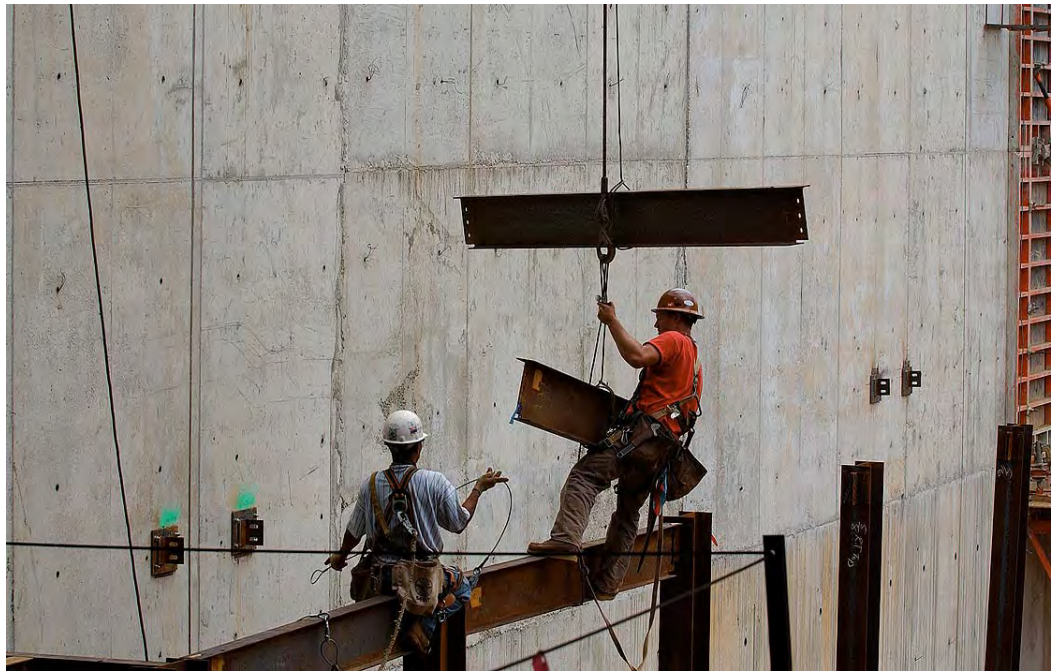
- Crews continue to erect structural steel inside the East Front Extension and continue with demolition activities to clear the way for elevator shafts, escalators, stairwells and new mechanical systems.

Truck Tunnel Construction/Constitution Avenue

- Crews will continue placing concrete for the remaining portion of the tunnel south of the existing Russell Tunnel.
- Constitution Ave. at New Jersey Ave. NW has been paved and is now open to four lanes of traffic. Full restoration, including sidewalks, curbs and parking lanes, is expected to be completed by early August.

Library of Congress (LOC) Tunnel

- Crews will continue placing concrete for the slab-on-grade within the CVC site and workers will continue assembling formwork for the tunnel walls moving east from the tunnel's entrance, which is near the center of the CVC site. The upper level floor slab at the tunnel entrance has been placed.
- Traffic flow and pedestrian access will continue along the western half of First Street SE for several weeks as utility work continues along the sidewalk along the east side of First St.



Steel workers guide crossbeams into place along the south wall of the Congressional Auditorium.

Next Week – 7/26/04 - 7/30/04

East Front Plaza Work

- Stone masons will continue placing the granite pavers and curb stones on the CVC roof deck working toward the east.
- Workers will continue to install utilities, build mechanical spaces, erect formwork and place concrete floor slabs for all three levels of the CVC. Placement of the upper level floor slab in the eastern half of the site will be completed.
- Steel erection for the roof and mezzanine of the Congressional Auditorium is expected to be completed and concrete pours will occur on the Auditorium roof deck.

East Front Extension

- Steel crews will continue to erect steel within the East Front concrete structure. Demolition of structural elements will continue on all levels within the East Front Extension and in the Carriageway below the East Front Center Steps.

Truck Tunnel Construction

- Workers will continue to erect formwork, place concrete and waterproof the roof deck and walls along the southern end of the tunnel zone. Backfilling will continue in the zone just north of the old Russell Tunnel.



Library of Congress (LOC) Tunnel

- Formwork assembly, concrete placements, waterproofing and excavation will continue in various zones along the LOC tunnel route.
- Utility work will continue in the east sidewalk along First Street SE.

Left: Architect of the Capitol Alan Hantman (left) discusses CVC construction with Senator Joe Lieberman during a project site walk on Thursday, July 15.

If you have any questions about the Capitol Visitor Center Project, please contact Tom Fontana, CVC project communications officer, at (202) 228-1310, or by e-mail at tfontana@aac.gov. You can read this document and previous editions on the CVC web site at www.aoc.gov.



United States Capitol Visitor Center Weekly Construction Summary



Prepared by the Capitol Visitor Center Project Office, Architect of the Capitol

July 26, 2004



At the eastern end of the CVC site, a steel worker guides a crossbeam in place for the mezzanine structure of the Congressional Auditorium.

This Week – Ongoing Work – 7/26/04 through 7/30/04

East Front Plaza Highlights:

- Crews continue to build mechanical spaces, erect formwork, pour concrete, and install utilities throughout the site.
- Steel continues to be erected for the roof and mezzanine of the Congressional Auditorium.
- Stone masons continue laying granite pavers near the center of the CVC roof deck. Approximately 75,000 paving stones will be in place by the time Congress returns in early September.

East Front Extension (Inside the Capitol)

- Crews continue to erect structural steel inside the East Front Extension and continue with demolition activities to clear the way for elevator shafts, escalators, stairwells and new mechanical systems.
- A second shift, for the placement of steel within the East Front, will work each weekday through the end of August.

Truck Tunnel Construction/Constitution Avenue

- Crews will continue placing concrete for the remaining portion of the tunnel south of the existing Russell Tunnel.
- Full restoration of Constitution Ave. at New Jersey Ave. NW, including sidewalks, curbs and parking lanes, is expected to be completed by early August.
- As concrete for the tunnel roof cures and is waterproofed, crews will continue backfilling along the southern portion of the tunnel alignment where it extends into the Senate parking lot on the East Front Plaza. Within the CVC perimeter at the lowest level of the Senate Expansion Space, concrete is being placed for the truck tunnel loading dock area.

Library of Congress (LOC) Tunnel

- Crews will continue assembling formwork for the tunnel walls moving east from the tunnel's entrance, which is near the center of the CVC site. The upper level floor slab at the tunnel entrance has been placed.
- Traffic flow and pedestrian access will continue along the western half of First Street SE for several weeks as utility work continues along the sidewalk along the east side of First Street SE.



Dozens of crates of granite paving stones are lined up on the CVC roof deck. Approximately 75,000 8-inch-square pavers will be laid by the time Congress returns from recess in September as crews begin a strong push toward paving the entire western half of the plaza by the Inauguration in January 2005.

Next Week – 8/2/04 - 8/6/04

East Front Plaza Work

- Stone masons will continue placing the granite pavers and curb stones on the CVC roof deck working toward the east.
- Workers will continue to install utilities, build mechanical spaces, erect formwork and place concrete floor slabs for all three levels of the CVC. Placement of the upper level floor slab in the eastern half of the site will be completed.
- Steel erection for the roof and mezzanine of the Congressional Auditorium is expected to be completed and concrete pours will occur on the Auditorium roof deck.



A CVC worker applies the finishing touch to a concrete slab at the north end of the site. The slab will serve as a part of a new 8-truck loading dock below the Senate expansion space.

East Front Extension

- Steel crews will continue to erect steel within the East Front concrete structure. Demolition of structural elements will continue on all levels within the East Front Extension and in the Carriageway below the East Front Center Steps.



Truck Tunnel Construction

- Workers will continue to backfill above the tunnel roof as concrete cures and is waterproofed. The bulk of work is now occurring where the tunnel passes below Northwest Drive and the north end of the East Front Plaza near the Senate parking lot.

Library of Congress (LOC) Tunnel

- Formwork assembly, concrete placements, waterproofing and excavation will continue in various zones along the LOC tunnel route.
- Utility work will continue in the east sidewalk along First Street SE through the end of August.

Concrete columns and walls now populate much of the upper level in the eastern half of the CVC structure.

If you have any questions about the Capitol Visitor Center Project, please contact Tom Fontana, CVC project communications officer, at (202) 228-1310, or by e-mail at tfontana@aoc.gov. You can read this document and previous editions on the CVC web site at www.aoc.gov.



United States Capitol Visitor Center Weekly Construction Summary



Prepared by the Capitol Visitor Center Project Office, Architect of the Capitol

August 2, 2004



A CVC crew guides a steel crossbeam in place for the roof of the Congressional Auditorium at the eastern end of the site.

This Week – Ongoing Work – 8/02/04 through 8/06/04

East Front Plaza Highlights:

- Crews continue to build mechanical spaces, erect formwork, pour concrete, and install utilities throughout the site.
- Nearly all the steel has been installed for the roof and mezzanine of the Congressional Auditorium.
- Stone masons continue laying granite pavers near the center and north side of the CVC roof deck. Approximately 75,000 paving stones will be in place by the time Congress returns in early September.
- Placement of the upper level floor slab in the eastern half of the site has been completed.

East Front Extension (Inside the Capitol)

- Crews continue to erect structural steel inside the East Front Extension and continue with demolition activities to clear the way for elevator shafts, escalators, stairwells and new mechanical systems.
- Workers will complete the installation of a 26,000-pound steel beam below the East Front portico.
- A second shift, for the placement of steel within the East Front, will work each weekday through the end of August.

Truck Tunnel Construction/Constitution Avenue

- Crews will continue placing concrete for the remaining portion of the tunnel south of the existing Russell Tunnel.
- Full restoration of Constitution Ave. at New Jersey Ave. NW, including sidewalks, curbs and parking lanes, is expected to be completed by early August.
- As concrete for the tunnel roof cures and is waterproofed, crews will continue backfilling along the southern portion of the tunnel alignment where it extends into the Senate parking lot on the East Front Plaza. Within the CVC perimeter at the lowest level of the Senate Expansion Space, concrete is being placed for the truck tunnel loading dock area.

Library of Congress (LOC) Tunnel

- Crews will continue assembling formwork for the tunnel walls at the western end of the tunnel within the CVC site.
- Traffic flow and pedestrian access is available along both the east and west sides of First Street SE.



A 26,000-pound steel beam (center) is slowly raised into place to support a portion of the East Front portico above and clear the way for demolition of adjacent columns. The area depicted here, formerly known as Room EF100, a ceremonial room, will serve as the primary transition area between the CVC and the Capitol. A monumental staircase and escalators will lead approximately 12,000 visitors a day into this zone.

Next Week – 8/09/04 - 8/13/04

East Front Plaza Work

- Workers will continue placing the granite paving stones on the CVC roof deck.
- Workers will continue to install utilities, build mechanical spaces, erect formwork and place concrete floor slabs for all three levels of the CVC.
- Steel erection for the roof and mezzanine of the Congressional Auditorium is expected to be completed and concrete pours will occur on the roof deck.

East Front Extension

- Steel crews will continue to erect steel within the East Front concrete structure. Demolition of structural elements will continue on all levels within the East Front Extension and in the Carriageway below the East Front portico.

Truck Tunnel Construction

- Workers will continue to backfill above the tunnel roof as concrete cures and is waterproofed. The bulk of work is now occurring where the tunnel passes below Northwest Drive and the north end of the East Plaza near the Senate parking lot.



Workers assembly steel rebar for the base slab of the new truck tunnel where it approaches its connection to the CVC.

Library of Congress (LOC) Tunnel

Formwork assembly, concrete placements, waterproofing and excavation will continue in various zones along the LOC tunnel route.

If you have any questions about the Capitol Visitor Center Project, please contact Tom Fontana, CVC project communications officer, at (202) 228-1310, or by e-mail at tfontana@aoc.gov. You can read this document and previous editions on the CVC web site at www.aoc.gov.



United States Capitol Visitor Center Weekly Construction Summary



Prepared by the Capitol Visitor Center Project Office, Architect of the Capitol

August 11, 2004



A view from the tower crane on the south side of the CVC site shows the progress of the granite paving stone installation (center). By the time Members of Congress return in early September, close to 65,000 8-inch-square stones will be on the plaza. Meanwhile, concrete columns and interior concrete walls for the CVC screening zone are visible at right. The curved wall marks the balcony that lines the eastern end of the Great Hall.

This Week – Ongoing Work – 8/09/04 through 8/13/04

East Front Plaza Highlights:

- Crews continue to build mechanical spaces, erect formwork, pour concrete, and install utilities throughout the site.
- Nearly all the steel has been installed for the roof and mezzanine of the Congressional Auditorium.
- Stone masons continue laying granite pavers near the center and north side of the CVC roof deck. Approximately 65,000 paving stones will be in place by the time Congress returns in early September.
- Placement of the upper level floor slab in the eastern half of the site has been completed.

East Front Extension (Inside the Capitol)

- Crews continue to erect structural steel inside the East Front Extension and continue with demolition activities to clear the way for elevator shafts, escalators, stairwells and new mechanical systems.
- Workers have completed the installation of a 26,000-pound steel beam below the East Front portico.
- A second shift, for the placement of steel within the East Front, will work each weekday through the end of August.

Truck Tunnel Construction/Constitution Avenue

- Crews will continue backfilling and placing concrete near the south end of the tunnel near the CVC.
- Full restoration of Constitution Ave. at New Jersey Ave. NW, including sidewalks, curbs and parking lanes, is expected to be completed by late August.

- As concrete for the tunnel roof cures and is waterproofed, crews will continue backfilling along the southern portion of the tunnel alignment where it extends into the Senate parking lot on the East Front Plaza. Within the CVC perimeter at the lowest level of the Senate Expansion Space, concrete has been placed for the truck tunnel loading dock area.
- During the next three weeks, some utility work will occur in the parking lot on the Senate Plaza near the Capitol.

Library of Congress (LOC) Tunnel

- Crews will continue assembling formwork for the tunnel walls at the western end of the tunnel within the CVC site.



A CVC crew assembles rebar for the interior wall of the pedestrian tunnel to the Library of Congress in the southern half of the site.

Next Two Weeks – 8/16/04 - 8/27/04

East Front Plaza Work

- Workers will continue placing the granite paving stones on the CVC roof deck.
- Workers will continue to install utilities, build mechanical spaces, erect formwork and place concrete floor slabs for all three levels of the CVC.
- Concrete placements will occur for the roof of the Congressional Auditorium and backfilling along the north and south walls of the auditorium will be completed.

East Front Extension

- Steel crews will continue to erect steel within the East Front concrete structure. Demolition of structural elements will continue on all levels within the East Front Extension and in the Carriageway below the East Front portico.
- Two shifts will continue to work through the end of the recess.

Truck Tunnel Construction

- Workers will continue to backfill above the tunnel roof as concrete cures and is waterproofed. The bulk of work will occur where the tunnel passes below the Senate Plaza and at its connection point with the CVC near the Senate Steps.

Library of Congress (LOC) Tunnel

Formwork assembly, concrete placements, waterproofing and excavation will continue in various zones along the LOC tunnel route.

Please see the additional CVC construction photos on the next two pages.

If you have any questions about the Capitol Visitor Center Project, please contact Tom Fontana, CVC project communications officer, at (202) 228-1310, or by e-mail at tfontana@aoc.gov. You can read this document and previous editions on the CVC web site at www.aoc.gov.

Current CVC Construction Activities – Aug. 9-13, 2004

Clockwise from right:

- (1) Workers assemble steel rebar for the lower level floor slab in the northwest quadrant of the CVC site.
- (2) A worker connects copper water lines in the service level.
- (3) A crew brushes black sand between granite paving stones on the CVC roof deck. Granite stones will cover the western half of the East Front Plaza in time for the inaugural in January 2005.
- (4) In the center of the project site, workers assemble reinforcing steel for one of the walls inside the screening area just beyond the CVC entrances.





Clockwise from top:

(1) CVC crews work on erecting the concrete columns and walls for the visitor screening zone in the eastern half of the site.

(2) A view through the skylight opening on the north side of the Great Hall shows a CVC crew placing concrete for the floor slab of the Hall. The majority of concrete required for the CVC is being mixed directly on site thereby helping to keep between 15 and 30 cement trucks off the road each day.

(3) Steel braces stabilize the formwork for a concrete wall along the western half of the CVC truck tunnel. Crews have now completed placing 70 percent of the concrete for the tunnel.



United States Capitol Visitor Center Weekly Construction Summary



Prepared by the Capitol Visitor Center Project Office, Architect of the Capitol

August 23, 2004



A worker installs air handling ductwork in the CVC service level. Utility installation will continue through the end of 2004.

This Week – Ongoing Work – 8/23/04 through 8/27/04

East Front Plaza Highlights:

- Crews continue to build mechanical spaces, erect formwork, pour concrete, and install utilities throughout the site.
- Nearly all the concrete has been placed for the roof of the Congressional Auditorium.
- Stone masons continue laying granite pavers on the CVC roof deck. Approximately 65,000 paving stones will be in place by the time Congress returns in early September.
- Crews continue to place steel columns, beams and roof decking sheets in the southeast quadrant of the site.

East Front Extension (Inside the Capitol)

- Crews continue to erect structural steel inside the East Front Extension and continue with demolition activities to clear the way for elevator shafts, escalators, stairwells and new mechanical systems.
- A second shift, for the placement of steel within the East Front, will work each weekday through the end of August.

Truck Tunnel Construction/Constitution Avenue

- Crews will continue backfilling and placing concrete near the south end of the tunnel near the CVC.
- Full restoration of Constitution Ave. at New Jersey Ave. NW, including sidewalks, curbs and parking lanes, is expected to be completed by late August.
- As concrete for the tunnel roof cures and is waterproofed, crews will continue backfilling along the southern portion of the tunnel alignment where it extends into the Senate parking lot on the East Front Plaza. Within the CVC perimeter at the lowest level of the Senate Expansion Space, concrete has been placed for the truck tunnel loading dock area.
- During the next three weeks, some utility work will occur in the parking lot on the Senate Plaza near the Capitol.



Steel workers install crossbeams for the CVC roof deck. The concrete walls at right define a portion of the visitor screening zone.

Library of Congress (LOC) Tunnel

- Crews will continue assembling formwork for the tunnel walls at the western end of the tunnel within the CVC site.

Next Week – 8/30/04 - 9/03/04

East Front Plaza Work

- Workers will continue placing the granite paving stones on the CVC roof deck.
- Workers will continue to install utilities, build mechanical spaces, erect formwork and place concrete for floor slabs.
- Steel crews will continue to install the columns, beams and roof decking sheets for the eastern half of the CVC roof deck.

East Front Extension

- Steel crews will continue to erect steel within the East Front concrete structure. Demolition of structural elements will continue on all levels within the East Front Extension and in the Carriageway below the East Front portico.
- Two shifts will continue to work through the end of the recess.

Truck Tunnel Construction

- Workers will continue to backfill above the tunnel roof as concrete cures and is waterproofed. The bulk of work will occur where the tunnel passes below the Senate Plaza and at its connection point with the CVC near the Senate Steps.

Library of Congress (LOC) Tunnel

Formwork assembly, concrete placements, waterproofing and excavation will continue in various zones along the LOC tunnel route. Pedestrian access will continue along the east side of the work zone on First St. SE.



In the center of the CVC site, steel beams define the base for one of two staircases that will connect the upper level main entrance area to the floor of the Great Hall on the lower level.



United States Capitol Visitor Center Weekly Construction Summary



Prepared by the Capitol Visitor Center Project Office, Architect of the Capitol

August 30, 2004



A CVC crew working inside the Capitol's East Front Extension struggles to install a steel beam that will help support the East Front center steps.

This Week – Ongoing Work – 8/30/04 through 9/03/04

East Front Plaza Highlights:

- Crews continue to build mechanical spaces, erect formwork, pour concrete, and install utilities throughout the site.
- Nearly all the concrete has been placed for the roof of the Congressional Auditorium.
- Stone masons continue laying granite pavers on the CVC roof deck. Approximately 65,000 paving stones will be in place by the time Congress returns next week.
- Crews continue to place steel columns, beams and roof decking sheets in the southeast quadrant of the site.

East Front Extension (Inside the Capitol)

- Crews continue to erect structural steel inside the East Front Extension (see photo above) and continue with demolition activities to clear the way for elevator shafts, escalators, stairwells and new mechanical systems.
- A second shift, for the placement of steel and demolition, will work each weekday through the end of the recess.

Truck Tunnel Construction/Constitution Avenue

- Crews will continue backfilling and placing concrete near the south end of the tunnel near the CVC.
- Full restoration of Constitution Ave. at New Jersey Ave. NW, including sidewalks, curbs and parking lanes, is expected to be completed by the end of the recess.
- Dump trucks continue to backfill the area above the tunnel along Northwest Drive (see photo opposite page).
- Utility work now occurring in the parking lot on the Senate Plaza near the Capitol will be completed by next Tuesday.

Library of Congress (LOC) Tunnel

- Crews will continue assembling formwork for the tunnel walls at the western end of the tunnel within the CVC site.

Next Week – 9/06/04 - 9/10/04

East Front Plaza Work

- Workers will continue placing the granite paving stones on the CVC roof deck.
- Workers will continue to install utilities, build mechanical spaces, erect formwork and place concrete for floor slabs.
- Steel crews will continue to install the columns, beams and roof decking sheets for the eastern half of the CVC roof deck.

East Front Extension

- Steel crews will continue to erect steel within the East Front concrete structure. Demolition of structural elements will continue on all levels within the East Front Extension and in the Carriageway below the East Front portico.
- Two shifts will continue to work through the end of the recess.

Truck Tunnel Construction

- Workers will continue to backfill above the tunnel roof as concrete cures and is waterproofed. The bulk of work will occur where the tunnel passes below the Senate Plaza and at its connection point with the CVC near the Senate Steps.

Library of Congress (LOC) Tunnel

- Formwork assembly, concrete placements, waterproofing and excavation will continue in various zones along the LOC tunnel route. Pedestrian access will continue along the east side of the work zone on First St. SE.



Taken in late August 2004, this aerial view of the new service tunnel along Northwest Drive near the Senate wing (top far right) shows only the southeastern-most portion of the tunnel (top center) remaining to be back-filled. Pedestrian access, staff parking along the drive, and landscaping elements will be restored later this fall.

Below: Stone workers lay granite paving stones in front of the Senate Steps. Crews will continue placing stones throughout the fall to prepare the East Front Plaza for the presidential inauguration in January 2005.





United States Capitol Visitor Center Weekly Construction Summary



Prepared by the Capitol Visitor Center Project Office, Architect of the Capitol

September 7, 2004

With Members and staff returning from recess this week, the aerial photos below are intended to provide a “snapshot” overview of the CVC project by comparing the construction progress from one year ago (below) with the current status (bottom photo). The standard synopsis of activities scheduled to occur this week and next is included on the second page of this construction summary.

One year ago...

August 2003

This view of the CVC site, taken late August 2003, shows the project footprint delineated by a concrete perimeter wall. Most of the excavation was complete, but interior work would not begin until September 5, 2003, when the first steel column was raised on the site. Close to 40,000 truck-loads of soil had been removed from the site, but persistently wet weather throughout 2003 often slowed the excavation process to a crawl. The excavation trench for a new truck/service tunnel can be seen in the upper right corner.



August 2004

This view of the CVC site taken two weeks ago shows nearly three quarters of the roof deck in place while the installation of granite paving stones on the western half of the deck is well underway. The interior walls for the visitor screening zone can be seen in the center of the photo as well as the walls and roof of the Congressional Auditorium (center foreground). Below the roof, most of the concrete floor slabs for the CVC's three levels have been completed and interior utility work is progressing. The entrance structure and a portion of the base slab for the Library of Congress pedestrian tunnel is also visible to the left of the Congressional Auditorium.



This Week – Ongoing Work – 9/06/04 through 9/10/04

East Front Plaza Highlights:

- Crews continue to build mechanical spaces, erect formwork, pour concrete, and install utilities throughout the site.
- During the recess, nearly all the concrete was placed for the roof of the Congressional Auditorium.
- Stone masons continue laying granite pavers on the CVC roof deck. The pavers will cover the entire western half of the CVC roof deck in time for the inauguration in January 2005.
- Crews continue to place steel beams and roof decking sheets in the eastern half of the site above the visitor screening zone. Most of the interior concrete walls in the screening zone have been completed.
- The CVC roof deck over the entire site is expected to be in place by the end of October.



During the recess, stone crews laid approximately 30,000 granite pavers, which are now visible throughout the western half of the CVC roof deck.

East Front Extension (Inside the Capitol)

- Crews continue to erect structural steel inside the East Front Extension and continue with demolition activities to clear the way for elevator shafts, escalators, stairwells and new mechanical systems.
- Installation of new mechanical systems will begin this week.

Truck Tunnel Construction/Constitution Avenue

- The concrete roof of the truck tunnel is now complete.
- As concrete cures and is waterproofed, crews will continue backfilling near the south end below the Senate plaza.
- Dump trucks continue to backfill the area above the tunnel along Northwest Drive.
- Utility work in the Senate plaza parking area was partially completed during the recess, but all spaces are available.

Library of Congress (LOC) Tunnel

- Crews will continue assembling formwork for the tunnel walls along the western half of the tunnel within the CVC site.

Next Week – 9/13/04 - 9/17/04

East Front Plaza Work

- Workers will continue placing the granite paving stones on the CVC roof deck.
- Workers will continue to install utilities, build mechanical spaces, erect formwork and place concrete for lower and upper level floor slabs in the northern half of the site.
- Steel crews will continue to install the columns, beams and roof decking sheets for the eastern half of the CVC roof deck.

East Front Extension

- Steel crews will continue to erect steel within the East Front concrete structure. Demolition of structural elements will continue on all levels within the East Front Extension and in the Carriageway below the East Front portico.

Truck Tunnel Construction

- Workers will continue to backfill above the tunnel roof as concrete cures and is waterproofed. The bulk of work will occur where the tunnel passes below the Senate Plaza and at its connection point with the CVC near the Senate Steps. Restoration of portions of Northwest Drive will begin.

Library of Congress (LOC) Tunnel

- Formwork assembly, concrete placements and waterproofing will continue in various zones along the LOC tunnel route. Pedestrian access will continue along the east side of the work zone on First St. SE.



United States Capitol Visitor Center Weekly Construction Summary



Prepared by the Capitol Visitor Center Project Office, Architect of the Capitol

September 13, 2004



The eastern half of the CVC site continues to take shape as crews erect interior walls, place steel beams and install the roof deck (top right). Approximately 80 percent of the concrete roof deck is now in place above the Congressional Auditorium (top left of photo).

This Week – Ongoing Work – 9/13/04 through 9/17/04

East Front Plaza Highlights:

- Crews continue to build mechanical spaces, erect formwork, pour concrete, and install utilities throughout the site.
- Three quarters of the concrete is in place for the roof of the Congressional Auditorium.
- Stone masons continue laying granite pavers on the CVC roof deck. The pavers will cover most of the western half of the CVC roof deck in time for the inauguration in January 2005.
- Crews continue to place steel beams and roof decking sheets in the eastern half of the site above the visitor screening zone. Steel rebar is now being assembled on the roof deck in the southeast quadrant.
- Most of the interior concrete walls for the visitor screening zone have been completed.
- The CVC roof deck is expected to be in place over the entire site by the end of October.

East Front Extension (Inside the Capitol)

- Crews continue to erect structural steel inside the East Front Extension and continue with demolition activities to clear the way for elevator shafts, escalators, stairwells and new mechanical systems.
- Installation of new mechanical systems will begin next week.



Workers set steel in place for the roof deck above the CVC entrance area.

Truck Tunnel Construction

- The concrete roof of the truck tunnel is now complete.
- Dump trucks continue to backfill the area above the tunnel along Northwest Drive.

Library of Congress (LOC) Tunnel

- Crews will continue assembling formwork for the tunnel walls along the western half of the tunnel within the site.



Installation of granite pavers on the western half of the East Front Plaza is a top priority in order to accommodate inaugural activities in Jan. 2005.

Next Week – 9/20/04 - 9/24/04

East Front Plaza Work

- Workers will continue placing the granite paving stones on the CVC roof deck.
- Workers will continue to install utilities, build mechanical spaces, erect formwork and place concrete for lower and upper level floor slabs in the northern half of the site.
- Steel crews will continue to install the columns, beams and roof decking sheets for the eastern half of the CVC roof deck.

East Front Extension

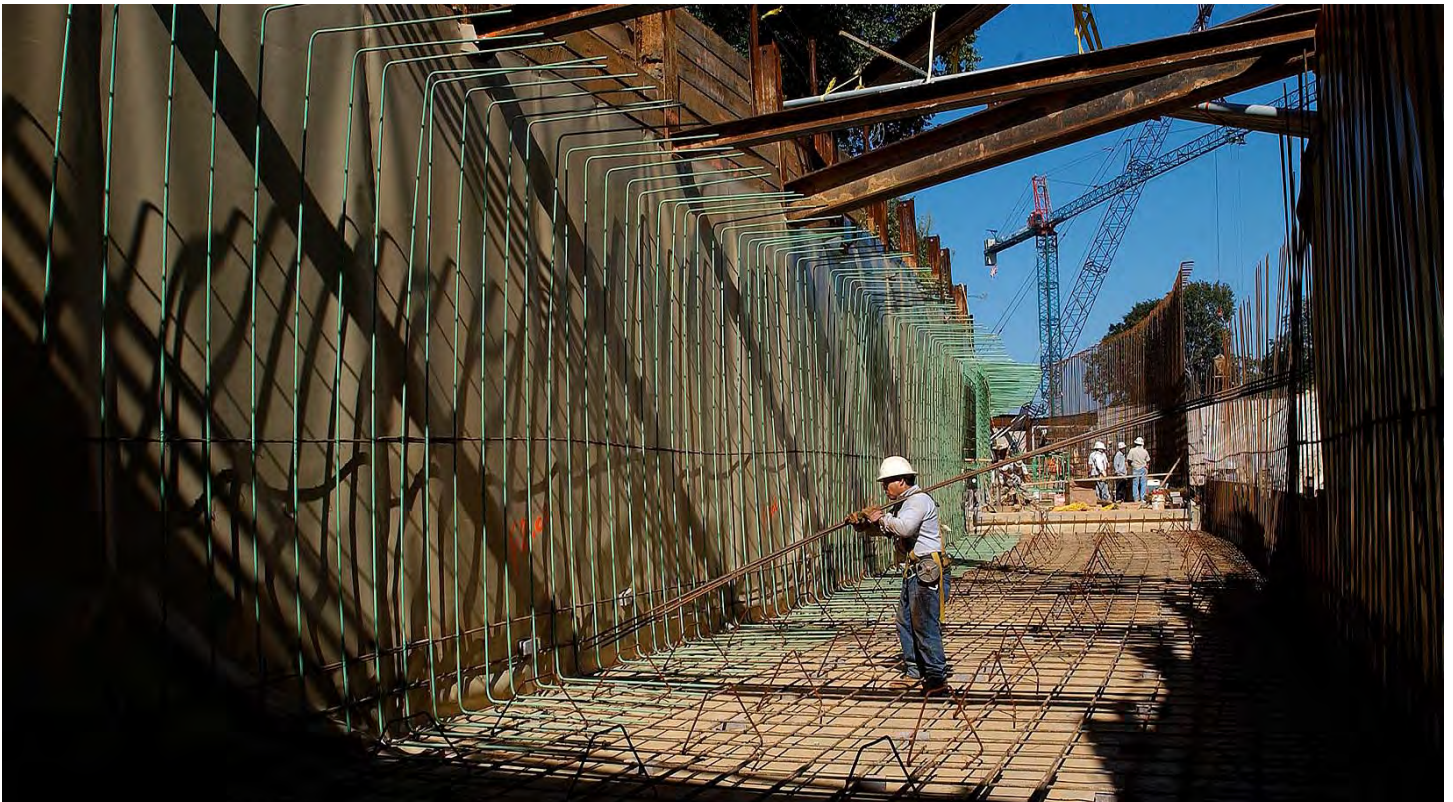
- Steel crews will continue to erect steel within the East Front concrete structure. Demolition of structural elements will continue on all levels within the East Front Extension and in the Carriageway below the East Front portico.

Truck Tunnel Construction

- Workers will continue to backfill above the tunnel roof as concrete cures and is waterproofed. The bulk of work will occur where the tunnel passes below the Senate Plaza and at its connection point with the CVC near the Senate Steps. Restoration of portions of Northwest Drive will begin.

Library of Congress (LOC) Tunnel

- Formwork assembly, concrete placements and waterproofing will continue in various zones along the LOC tunnel route (see photo below). Pedestrian access will continue along the east side of the work zone on First St. SE.



Steel rebar continues to rise for the walls of the Library of Congress pedestrian tunnel.



United States Capitol Visitor Center Weekly Construction Summary



Prepared by the Capitol Visitor Center Project Office, Architect of the Capitol

October 4, 2004



Demolition continues at a steady pace inside the East Front Extension. The center of the photo above represents the primary transition zone between the CVC and the Capitol (at the Crypt level) and will include a grand central staircase flanked by two escalators. The arcade structure at the very top of the photo is the ceiling of the former carriage pass-through below the East Front Center Steps.

This Week – Ongoing Work – 10/04/04 through 10/08/04

East Front Plaza Highlights:

- Crews continue to build mechanical spaces, erect formwork, pour concrete, and install utilities throughout the site.
- Three quarters of the concrete is in place for the roof of the Congressional Auditorium.
- Stone masons have now placed more than 70,000 8-inch square granite pavers on the CVC roof deck. The pavers will cover the western half of the CVC roof deck in time for the inauguration in January 2005.
- Crews continue to place steel beams and roof decking sheets in the northeast quadrant of the site above the visitor screening zone.
- Close to 90 percent of the interior concrete structural walls for the visitor screening zone have been completed.

East Front Extension (Inside the Capitol)

- Crews continue to erect structural steel inside the East Front Extension and continue with demolition activities to clear the way for elevator shafts, escalators, stairwells and new mechanical systems.
- Installation of new mechanical systems will begin next week.

Truck Tunnel Construction

- **Milestone:** All concrete placements have been completed for the truck tunnel.
- Crews continue to backfill the area above the tunnel and have begun restoring areas along Northwest Drive.



This photo taken 9/22/04 shows most of the western half of the East Front Plaza deck covered with more than 70,000 8-inch-square paving stones.

Library of Congress (LOC) Tunnel

- Crews will continue to place concrete (more than 50 percent complete), install waterproofing and assemble formwork for the tunnel walls along the western half of the LOC tunnel within the site.

Next Week – 10/11/04 – 10/15/04

East Front Plaza Work

- Workers will continue placing the granite paving stones on the CVC roof deck.
- Workers will continue to install utilities, build mechanical spaces, erect formwork and place concrete for lower and upper level floor slabs in the northwest and southwest quadrants (adjacent to the Capitol) of the site.
- Steel crews will continue to install the columns, beams and roof decking sheets for the northeast quadrant of the CVC roof deck.

East Front Extension

- Steel crews will continue to erect steel within the East Front concrete structure. Demolition of structural elements will continue on all levels within the East Front Extension and in the Carriageway below the East Front portico.

Truck Tunnel Construction

- Workers will continue to backfill above the tunnel roof along Northwest Drive and where the tunnel passes below the Senate Plaza and at its connection point with the CVC near the Senate Steps. Restoration of portions of Northwest Drive continues.

Library of Congress (LOC) Tunnel

- Formwork assembly, concrete placements and waterproofing will continue in various zones along the LOC tunnel route. Pedestrian access will continue along the east side of the work zone on First St. SE and existing traffic patterns will continue.

If you have any questions about the Capitol Visitor Center Project, please contact Tom Fontana, CVC project communications officer, at (202) 228-1310, or by e-mail at tfontana@oc.gov. You can read this document and previous editions on the CVC web site at www.oc.gov.



Above: A recent evening view of the Capitol and the CVC project site looking west taken from a stationary camera fixed to the dome of the Library of Congress.

Right: A view inside the pedestrian tunnel to the Library of Congress shows the progress of formwork and rebar assembly. Close to 50 percent of the concrete for the LOC tunnel has been placed.

Below: Workers continue to place granite paving stones to prepare the western half of the East Front Plaza deck for the Inauguration in January 2005.



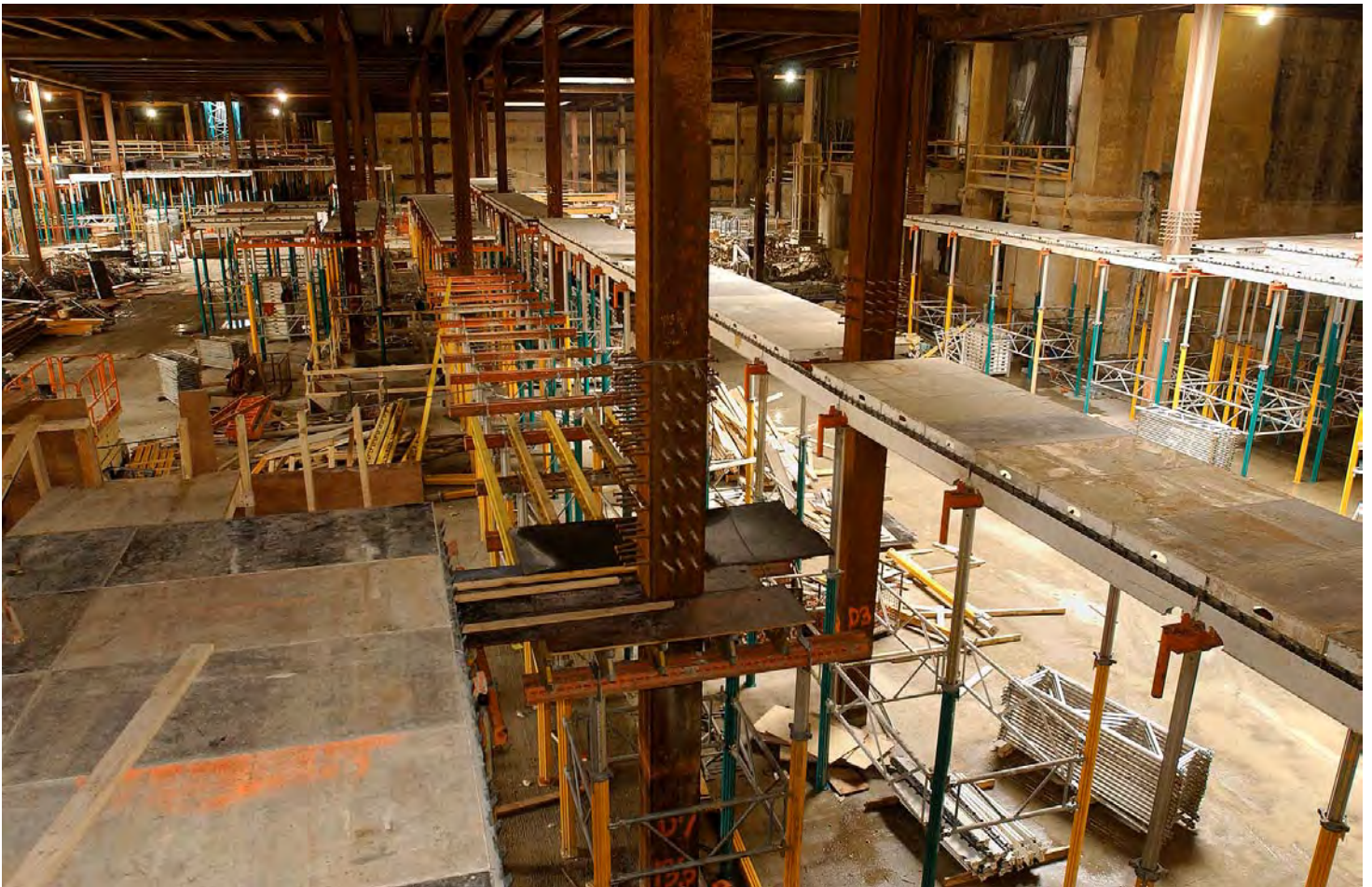
Clockwise from right: A view inside the Congressional Auditorium shows the progress of steel erection and concrete placements. The top center of the photo shows the tiered support structure for the mezzanine seats in the auditorium.



A view of the interior concrete walls within the CVC's visitor screening zone. A steel roof structure now covers most of this zone.

A wide view of the interior western half of the CVC looking south. The concrete structure and columns at the top right of the photo show the existing structure below the East Front where the primary transition from the CVC to the Capitol will occur.

A steel worker guides a crossbeam in place for the CVC roof deck.





United States Capitol Visitor Center Weekly Construction Summary



Prepared by the Capitol Visitor Center Project Office, Architect of the Capitol

October 12, 2004



A CVC crew places concrete on the roof deck of the Congressional Auditorium. The steel framework for two elevator towers can be seen in the center (left and right) of the photo. The elevators will provide accessibility from the plaza level to the CVC entrances one level down.

This Week – Ongoing Work – 10/11/04 through 10/15/04

East Front Plaza Highlights:

- Crews continue to build mechanical spaces, erect formwork, pour concrete, and install utilities throughout the site.
- Stone masons have now placed more than 75,000 8-inch square granite pavers on the CVC roof deck. The pavers will cover the western half of the CVC roof deck in time for the inauguration in January 2005.
- Crews continue to place steel beams and roof decking sheets in the northeast quadrant of the site above the visitor screening zone. Only one half of the northeast quadrant remains exposed before the entire CVC is under cover.
- More than 90 percent of the interior concrete structural walls for the visitor screening zone have been completed.
- Close to 65 percent of the Congressional Auditorium's mezzanine level concrete floor slab has been placed.

East Front Extension (EFE) (Inside the Capitol)

- Crews continue to erect structural steel inside the EFE and continue with demolition activities to clear the way for elevator shafts, escalators, stairwells and new mechanical systems.
- **Milestone:** New structural steel now supports much of the EFE in the location of the CVC/Capitol transition zone and all of the original concrete columns in this zone (built during the 1958-62 extension of the East Front) have been removed clearing the way for visitors to flow easily from the CVC into the Capitol at the Crypt level.
- Concrete placements will occur this week on both the north and south sides of the EFE for new air shaft walls.
- Crews will begin to demolish the Gallery-level floor slab where the ramp existed between the House and Senate sides.

Truck Tunnel Construction

- All concrete placements have been completed for the truck tunnel.
- Crews continue to backfill the area above the tunnel and have begun restoring areas along Northwest Drive.
- Crews will begin to restore the sidewalks along Northwest Drive pending the approval of mockups just completed.

Library of Congress (LOC) Tunnel

- Crews will continue to place concrete (more than 55 percent complete), install waterproofing and assemble formwork for the tunnel walls along the western half of the LOC tunnel within the CVC site.

Next Week – 10/18/04 – 10/22/04

East Front Plaza Work

- Workers will continue placing the granite paving stones on the CVC roof deck.
- Trucks may begin delivering soil to begin restoration of the rectangular grassy areas along the western half of the East Front Plaza.
- Equipment will begin to arrive for the dismantling of the tower crane on the north side of the site, expected to occur 10/23-10/24/04.
- Workers will continue to install utilities, build mechanical spaces, erect formwork and place concrete for the upper level floor slabs in the northeast quadrant.
- Steel crews will continue to install the columns, beams and roof decking sheets for the northeast quadrant of the CVC roof deck.



A worker (top right) secures steel for the roof deck in the northeast quadrant of the site. The openings at left are part of the CVC entrance area. Eventually, 12,000 visitors a day, nearly 3.5 million a year, will pass through this zone before entering the CVC's Great Hall.

East Front Extension

- Steel crews will continue to erect steel within the East Front concrete structure. Demolition of structural elements will continue on all levels within the East Front Extension and in the Carriageway below the East Front portico.

Truck Tunnel Construction

- Workers will continue to backfill above the tunnel roof along Northwest Drive and where the tunnel passes below the Senate Plaza and at its connection point with the CVC near the Senate Steps. Restoration of portions of Northwest Drive and sidewalks will continue.

Library of Congress (LOC) Tunnel

- Formwork assembly, concrete placements and waterproofing will continue in various zones along the LOC tunnel route. Pedestrian access will continue along the east side of the work zone on First St. SE. Existing traffic patterns will continue.



A worker guides roof steel in place above the CVC entrance structure.



A crew places concrete for the mezzanine level of the Congressional Auditorium.



United States Capitol Visitor Center Weekly Construction Summary



Prepared by the Capitol Visitor Center Project Office, Architect of the Capitol

October 18, 2004



A crew places concrete on the roof deck of the CVC at the northern end of the site. The two large Great Hall skylight openings can be seen in the center and top center of photo. The steel crossbeam structure above the visitor screening zone at the far left-center of the photo is the last area of the roof deck to be covered. The roof deck over the entire CVC facility will be in place by the end of October.

This Week – Ongoing Work – 10/18/04 through 10/22/04

East Front Plaza Highlights:

- Crews continue to build mechanical spaces, erect formwork, pour concrete, and install utilities throughout the site.
- Stone masons have now placed more than 78,000 8-inch square granite pavers on the CVC roof deck. The pavers will cover the western half of the CVC roof deck in time for the inauguration in January 2005.
- All structural steel beams and columns are in place for the CVC roof deck in the northeast quadrant and crews continue to install steel roof decking sheets over this last exposed area of the facility.
- More than 95 percent of the interior concrete structural walls for the visitor screening zone have been completed.
- More than 90 percent of the Congressional Auditorium's mezzanine level concrete floor slab has been placed.
- Trucks will begin delivering soil to begin restoration of the rectangular grassy areas along the western half of the East Front Plaza.
- Equipment will begin to arrive late this week for the dismantling of the tower crane on the north side of the site, expected to occur during this upcoming weekend.

East Front Extension (EFE) (Inside the Capitol)

- Crews continue to erect structural steel inside the EFE and continue with demolition activities to clear the way for elevator shafts, escalators, stairwells and new mechanical systems.
- Concrete placements will continue this week on both the north and south sides of the EFE for new air shaft walls.

- Crews will continue to demolish the Gallery-level floor slab where the ramp existed between the House and Senate sides.
- **Milestone** (from last week's summary): New structural steel now supports much of the EFE in the location of the CVC/Capitol transition zone and all of the original concrete columns in this zone (built during the 1958-62 extension of the East Front) have been removed clearing the way for visitors to flow easily from the CVC into the Capitol at the Crypt level.



Granite paving stones have now been installed over most of the northwest quadrant of the site.

Truck Tunnel Construction

- All concrete placements have been completed for the truck tunnel.
- Crews continue to backfill the area above the tunnel and have begun restoring areas along Northwest Drive.
- Crews will continue restoring the sidewalks along Northwest Drive.

Library of Congress (LOC) Tunnel

- Crews will continue to place concrete (more than 60 percent complete), install waterproofing and assemble formwork for the tunnel walls along the western half of the LOC tunnel within the CVC site. The concrete slab below First Street SE has been placed.

Next Week – 10/25/04 – 10/29/04

East Front Plaza Work

- Workers will continue placing the granite paving stones on the CVC roof deck.
- Workers will continue to install utilities, build mechanical spaces, erect formwork and place concrete for the upper level floor slabs in the northeast quadrant.
- Steel crews may complete installation of the roof decking sheets for the northeast quadrant of the CVC roof deck.



A CVC crew places concrete in formwork for the tiered seating structure on the lower level of the Congressional Auditorium.

East Front Extension

- Steel crews will continue to erect steel within the East Front concrete structure. Demolition of structural elements will continue on all levels within the East Front Extension and in the Carriageway below the East Front portico.

Truck Tunnel Construction

- Crews will continue to backfill above the tunnel roof along Northwest Drive and where the tunnel passes below the Senate Plaza and at its connection point with the CVC near the Senate Steps. Restoration of portions of Northwest Drive and sidewalks will continue.

Library of Congress (LOC) Tunnel

- Formwork assembly, concrete placements and waterproofing will continue in various zones along the LOC tunnel route. Pedestrian access will continue along the east side of the work zone on First St. SE. Existing traffic patterns will continue.



United States Capitol Visitor Center Weekly Construction Summary



Prepared by the Capitol Visitor Center Project Office, Architect of the Capitol

November 1, 2004



This view inside the Capitol Visitor Center shows construction progress in the grand space of the Great Hall. Visitors will enter through doors on the upper level to a balcony overlooking the Hall. From there they will be able to descend to the floor of the Great Hall by elevators, escalators or either of two staircases (left and right center of photo) and head east toward a 600-seat dining facility or head west toward the Capitol into one of two orientation theaters or a 16,500-square-foot exhibition gallery (more than twice the floor space of the Capitol Rotunda). The bright light to the left and right of the photo is sunlight pouring through the two 30-foot by 70-foot skylight openings that flank the space.

This Week – Ongoing Work – 11/01/04 through 11/05/04

East Front Plaza Highlights:

- **Milestone:** At least one layer of concrete now caps all portions of the CVC roof deck (except for a few small areas around the fringe of the CVC footprint). The last major placement of concrete was completed on Monday, November 1, 2004.
- Soil now fills both of the rectangular zones in front of the original north and south wings near the face of the Capitol. Grass sod will be delivered over the next two weeks.
- Stone masons have now placed more than 115,000 8-inch-square granite pavers on the CVC roof deck. The pavers will cover the western half of the CVC roof deck in time for the inauguration in January 2005.
- All of the interior concrete structural walls for the visitor screening zone have been completed.
- The Congressional Auditorium's mezzanine level concrete floor slab has been placed and concrete placements continue on the lower level.
- Crews continue to build mechanical spaces, erect interior blockwork, and install utilities throughout the site.
- Concrete work has been completed for the egress stairwell adjacent to the Capitol on the north side of the Center Steps.

East Front Extension (EFE) (Inside the Capitol)

- Crews continue to erect structural steel inside the EFE and continue with demolition activities to clear the way for elevator shafts, escalators, stairwells and new mechanical systems.
- Concrete placements will continue this week on both the north and south sides of the EFE for new air shaft walls.

Truck Tunnel Construction

- Crews have completed backfilling the area above the truck tunnel along Northwest Drive except for one small area where perimeter security work needs to occur first. All the curbstones within the CVC project requirements have been reinstalled and the remaining curbstones will be replaced as part of the perimeter security work occurring concurrently within this zone.
- Crews will begin laying wire mesh this week for the base concrete slab for Northwest Drive.
- All concrete placements have been completed for the truck tunnel and placement of the final two-inch topping surface (microsilica) for the tunnel slab has also been completed.
- Trucks delivering materials to the CVC site may begin using the truck tunnel later this month.

Library of Congress (LOC) Tunnel

- Crews will continue to place concrete (more than 75 percent complete), install waterproofing and assemble formwork for the tunnel walls and roof along the western half of the LOC tunnel within the CVC site.
- Concrete placements will occur this week for the base tunnel slab on the LOC (east) side of First Street.
- The concrete slab below First Street SE has been placed.

Next Week – 11/08/04 – 11/12/04

East Front Plaza Work

- Workers will continue placing the granite paving stones on the CVC roof deck.
- Workers will continue to install utilities, build mechanical spaces, place concrete and erect blockwork to form and define interior spaces.
- All major concrete placements for the base slab of the CVC roof deck have been completed. Waterproofing may begin to occur where the base slab has cured sufficiently.



On the CVC roof deck, a small bulldozer levels soil inside a rectangular zone near the face of the Capitol in front of the original north wing. Later this month, new grass sod will be planted on the soil to re-establish the grass bed that existed before construction began. The soil bed on the House side of the plaza has already been filled, leveled and compacted and is ready for planting.

East Front Extension

- Steel crews will continue to erect steel within the East Front concrete structure. Demolition of structural elements and clearing activities will continue on all levels within the East Front Extension and in the Carriageway below the East Front portico.

Truck Tunnel Construction

- Restoration of portions of Northwest Drive and sidewalks will continue. Concrete pours will occur for the base roadbed slab along the lower portion of Northwest Drive just south and east of Constitution Avenue.

Library of Congress (LOC) Tunnel

- Formwork assembly, concrete placements and waterproofing will continue in various zones along the LOC tunnel route. Pedestrian access will continue along the east side of the work zone. Existing traffic patterns will continue.

If you have any questions about the Capitol Visitor Center Project, please contact Tom Fontana, CVC project communications officer, at (202) 228-1310, or by e-mail at tfontana@oc.gov. You can read this document and previous editions on the CVC web site at www.oc.gov.



United States Capitol Visitor Center Weekly Construction Summary



Prepared by the Capitol Visitor Center Project Office, Architect of the Capitol

November 8, 2004



This view of the East Front Plaza taken Thursday, November 4, 2004, from the top of the Library of Congress dome shows the entire CVC roof deck completely in place. More than 125,000 granite paving stones have been installed on the Plaza deck and the soil beds near the face of the building are expected to receive sod during the next two weeks. The CVC south entrance is clearly visible (foreground center) while above the entrance zone, blue tarps were laid to protect newly-placed concrete from wet weather that was expected later in the day. Meanwhile, dump trucks continue to deliver soil (bottom right corner) to backfill the sloping zones that will lead visitors coming from the east to the CVC entrances.

This Week – Ongoing Work – 11/08/04 through 11/12/04

East Front Plaza Highlights:

- All major concrete placements have been completed and crews are now working on stairwells and interior blockwork.
- Soil now fills both of the rectangular zones in front of the original north and south wings near the face of the Capitol. Grass sod will be delivered during the next two weeks.
- Stone masons have now placed more than 125,000 granite pavers on the CVC roof deck. The pavers will cover the western half of the CVC roof deck in time for the inauguration in January 2005.
- All of the interior concrete structural walls for the visitor screening zone have been completed.
- The Congressional Auditorium's mezzanine level concrete floor slab has been placed and concrete placements continue on the lower level.
- Crews continue to build mechanical spaces, erect interior blockwork, and install utilities throughout the site.
- Concrete work has been completed for the egress stairwell adjacent to the Capitol on the north side of the Center Steps.



In unusually warm November weather, a stone crew installs granite pavers near the House steps.

East Front Extension (EFE) (Inside the Capitol)

- Crews continue to erect structural steel inside the EFE and continue with demolition activities to clear the way for elevator shafts, escalators, stairwells and new mechanical systems.
- Concrete placements will continue this week on both the north and south sides of the EFE for new stairs and walls.

Truck Tunnel Construction

- Crews have completed backfilling the area above the truck tunnel along Northwest Drive, except for one small area where perimeter security work needs to occur first, and they will continue laying wire mesh this week for the base concrete slab for Northwest Drive. Concrete placements may occur in this zone later in the week. All the curbstones within the CVC project requirements have been reinstalled and the remaining curbstones will be replaced as part of the perimeter security work occurring concurrently within this zone.
- Work has begun to restore the aggregate stone sidewalks along New Jersey Avenue NW and Constitution Avenue NW.
- Trucks delivering materials to the CVC site may begin using the truck tunnel later this month.

Library of Congress (LOC) Tunnel

- Crews may begin this week to remove the temporary bridge on First Street SE above the tunnel zone. Traffic patterns may be slightly affected although a lane shift will most likely occur later next week.
- Crews will continue to place concrete (more than 75 percent complete), install waterproofing (80 percent complete) and assemble formwork for the tunnel walls and roof along the western half of the LOC tunnel within the CVC site.
- Concrete placements will occur this week for the base tunnel slab on the LOC (east) side of First Street.
- The concrete slab below First Street SE has been placed.

Next Week – 11/15/04 – 11/19/04

East Front Plaza Work

- Workers will continue placing the granite paving stones on the CVC roof deck.
- Workers will continue to install utilities, build mechanical spaces, place concrete and erect blockwork to form and define interior spaces.

East Front Extension

- Steel crews will continue to erect steel and place concrete within the East Front concrete structure. Demolition of structural elements and clearing activities will continue on all levels within the East Front.

Truck Tunnel Construction

- Restoration of portions of the Northwest Drive roadbed and sidewalks will continue. Concrete pours will occur for the base roadbed slab along the lower portion of Northwest Drive just south and east of Constitution Avenue.



Most of the concrete slabs have been placed for the mezzanine and lower level of the Congressional Auditorium. The tiered seating structure is visible in the center of the photo.

Library of Congress (LOC) Tunnel

- Formwork assembly, concrete placements and waterproofing will continue in various zones along the LOC tunnel route. Pedestrian access will continue along the east side of the work zone. Existing traffic patterns may change slightly depending upon the progress of the removal of the temporary bridge along First Street SE.



United States Capitol Visitor Center Weekly Construction Summary



Prepared by the Capitol Visitor Center Project Office, Architect of the Capitol

November 15, 2004



Landscape crews roll out new sod in front of the original Senate Wing as part of the effort to prepare the East Front Plaza for the inauguration.

This Week – Ongoing Work – 11/15/04 through 11/19/04

East Front Plaza Highlights:

- All major concrete placements have been completed and crews are now working on stairwells and interior blockwork.
- New grass sod now covers both rectangular zones in front of the original House and Senate wings near the face of the Capitol as part of the effort to prepare the East Front Plaza for the inauguration.
- Stone masons have now placed more than 130,000 granite pavers on the CVC roof deck. The pavers will cover the western half of the CVC roof deck in time for the inauguration.
- Major concrete placements will occur this week for the upper roof slab in the northeast and southeast quadrants.
- Installation of utility and communications conduit continues in the Congressional Auditorium.
- Crews continue to build mechanical spaces, erect interior blockwork, and install utilities throughout the site.
- Concrete work has been completed for the egress stairwell adjacent to the Capitol on the north side of the Center Steps.

East Front Extension (EFE) (Inside the Capitol)

- Crews will begin placing concrete for the central grand staircase that connects the CVC to the Capitol at the Crypt level.
- Crews continue to erect structural steel inside the EFE and continue with demolition activities to clear the way for elevators, escalators, stairwells and new mechanical systems.



A small forklift is used to move a steel beam into place for the seating structure of one of the two CVC orientation theaters. Each theater will accommodate approximately 250 people.

Truck Tunnel Construction

- **Milestone:** The first delivery through the CVC truck tunnel occurred at approximately 8:00 AM on Monday, November 15, 2004. Trucks now using the tunnel are delivering materials primarily in support of the Sequence 2 contract. The tunnel is not expected to open to general truck traffic (in support of Capitol operations) until 2006 when all interior support facilities, freight elevators and connecting corridors are completed.
- Crews have completed backfilling the area above the truck tunnel along Northwest Drive, except for one small area where the perimeter security team is now assembling the formwork for the circular planter in this zone. Concrete for the Northwest Drive roadbed may be completed this week with milling and asphalt work expected to occur next week. All the curbstones within the CVC project requirements have been reinstalled and the remaining curbstones will be replaced as part of the perimeter security work occurring concurrently within this zone.
- Work to restore the aggregate stone sidewalks along NJ Avenue NW has been completed.



CVC Milestone: The first trucks to use the new CVC truck tunnel on the north side of the Capitol began rolling in at 8:00 AM on Monday, November 15, 2004.

Library of Congress (LOC) Tunnel

- Waterproofing is now complete in the tunnel below First Street clearing the way for removal the temporary bridge on First Street SE above the tunnel zone. Traffic patterns may be slightly affected although a lane shift will most likely occur later next week after the Thanksgiving holiday.
- Crews will continue to place concrete (more than 75 percent complete), install waterproofing (80 percent complete) and assemble formwork for the tunnel walls and roof along the western half of the LOC tunnel within the CVC site.
- Concrete placements will continue for the base tunnel slab on the LOC (east) side of First Street.

Next Week – 11/22/04 – 11/26/04

East Front Plaza Work

- Workers will continue placing the granite paving stones on the CVC roof deck and complete other plaza deck work in preparation of the inauguration in January 2005.
- Crews will continue to install utilities, build mechanical spaces, place concrete, erect blockwork, and backfill zones near the CVC entrances.

East Front Extension

- Steel crews will continue to erect steel and place concrete within the East Front concrete structure. Demolition of structural elements and clearing activities will continue on all levels within the East Front.



Workers assemble steel rebar for the main central staircase that will connect the CVC to the Capitol at the Crypt level.

Truck Tunnel Construction

- Restoration of Northwest Drive will continue, including the placement of asphalt and the restoration of sidewalks.

Library of Congress (LOC) Tunnel

- Formwork assembly, concrete placements and waterproofing will continue in various zones along the LOC tunnel route. Pedestrian access will continue along the east side of the work zone. Existing traffic patterns may change slightly depending upon the progress of the removal of the temporary bridge along First Street SE.



United States Capitol Visitor Center Weekly Construction Summary



Prepared by the Capitol Visitor Center Project Office, Architect of the Capitol

November 22, 2004

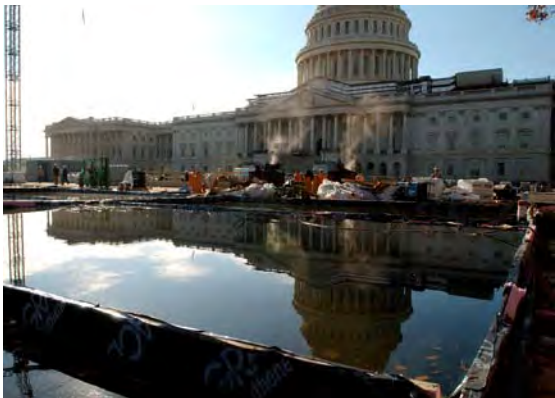


Work on the East Front Plaza deck continues on pace to support inaugural activities in January 2005. At right, workers reinstall the granite slabs on the north side of the East Front center steps.

This Week – Ongoing Work – 11/22/04 through 11/26/04

East Front Plaza Highlights:

- Crews have begun to install the small skylights situated in the rectangular grass beds near the face of the Capitol as part of the effort to prepare the East Front Plaza for the inauguration.
- Stone masons have now placed more than 140,000 granite pavers on the CVC roof deck. The pavers will cover the western half of the CVC roof deck in time for the inauguration.



A temporary pool of water is established to test the waterproofing membrane on the roof deck of the CVC.

- Major concrete placements for the upper roof slab in the northeast and southeast quadrants have been completed.
- Installation of utility and communications conduit continues in the Congressional Auditorium.
- Crews continue to build mechanical spaces, erect interior blockwork, and install utilities throughout the site.
- The tower crane in the southwest quadrant will be dismantled and removed in two weeks.

East Front Extension (EFE) (Inside the Capitol)

- Crews have placed concrete for the central grand staircase that connects the CVC to the Capitol at the Crypt level.
- Crews continue with demolition activities to clear the way for elevators, escalators, stairwells and new mechanical systems.

Truck Tunnel Construction

- The truck tunnel is open to trucks delivering materials in support of the Sequence 2 contract. The tunnel is not expected to open to general truck traffic (in support of Capitol operations) until 2006 when all interior support facilities, freight elevators and connecting corridors are completed.
- Crews have completed backfilling the area above the truck tunnel along Northwest Drive, and the base concrete slab for the asphalt road bed is nearly complete. Milling and asphalt work is expected to occur next week. All the curbstones within the CVC project requirements have been reinstalled and the remaining curbstones will be replaced as part of the perimeter security work occurring concurrently within this zone.
- Work to restore the aggregate stone sidewalks along NJ Avenue NW has been completed.
- The perimeter security team is now assembling the formwork for the circular planter near the North Barricade Entrance.



A CVC worker installs insulation board on the roof deck of the Congressional Auditorium.

Library of Congress (LOC) Tunnel

- Waterproofing is now complete in the tunnel below First Street and workers have begun removing the temporary bridge on First Street SE above the tunnel zone. The bridge removal and subsequent backfilling may be completed by the end of the week. Asphalt paving and restoration of the First Street roadbed may be completed by the end of next week. Traffic patterns will shift at times to accommodate the road work.
- Crews will continue to place concrete along the eastern end of the tunnel with the northwest grounds of the LOC. All concrete placements may be completed by early December.

Next Week – 11/29/04 – 12/03/04

East Front Plaza Work

- Workers will continue placing the granite paving stones on the CVC roof deck and other plaza deck work in preparation of the inauguration in January 2005.
- Crews will continue to install utilities, build mechanical spaces, place concrete, erect blockwork, and backfill the zones near the CVC entrances.

East Front Extension

- Steel crews will continue to erect steel and place concrete within the East Front concrete structure. Demolition of structural elements and clearing activities will continue in various zones within the East Front.

Truck Tunnel Construction

- Restoration of Northwest Drive will continue, including the placement of asphalt and the restoration of sidewalks.

Library of Congress (LOC) Tunnel

- Formwork assembly, concrete placements and waterproofing will continue in various zones along the LOC tunnel route especially within the northwest grounds of the LOC. Pedestrian access will continue along the east side of the work zone. Existing traffic patterns may change slightly depending upon the progress of the removal of the temporary bridge along First Street SE and the restoration of the First Street roadbed.



United States Capitol Visitor Center Weekly Construction Summary



Prepared by the Capitol Visitor Center Project Office, Architect of the Capitol

November 29, 2004



A view of the CVC from the Library of Congress shows work on the East Front Plaza deck progressing on pace to support inaugural activities in January 2005. Inset: Stone crews place granite paving stones near the grassy bed in front of the original Senate Wing.

This Week – Ongoing Work – 11/29/04 through 12/03/04

East Front Plaza Highlights:

- The tower crane in the southwest quadrant will be dismantled and removed this coming weekend.
- Crews continue to install the small skylights situated in the rectangular grass beds near the face of the Capitol as part of the effort to prepare the East Front Plaza for the inauguration.
- Stone masons have now placed more than 145,000 granite pavers on the CVC roof deck. The pavers will cover the western half of the CVC roof deck in time for the inauguration.
- Major concrete placements for the upper roof slab in the northeast and southeast quadrants have been completed.
- Installation of utility and communications conduit continues in the Congressional Auditorium.
- Crews continue to build mechanical spaces, erect interior blockwork, and install utilities throughout the site.

East Front Extension (EFE) (Inside the Capitol)

- Crews have placed concrete for the central grand staircase that connects the CVC to the Capitol at the Crypt level.
- Crews continue with demolition activities to clear the way for elevators, escalators, stairwells and new mechanical systems.

Truck Tunnel Construction

- The truck tunnel is open to trucks delivering materials in support of the Sequence 2 contract. The tunnel is not expected to open to general truck traffic (in support of Capitol operations) until 2006 when all interior support facilities, freight elevators and connecting corridors are completed.
- Crews will continue to place asphalt to restore Northwest Drive. Additional roadwork within Northwest Drive may occur later this week or next to restore portions of the roadbed



The base concrete structure for the main central staircase that links the CVC to the Capitol has been placed. Escalators will flank both sides of the staircase when this zone is completed.

- beyond the tunnel construction zone, specifically the area west of the tunnel zone and near the First Street entrance. All the curbstones within the CVC project requirements have been reinstalled and the remaining curbstones will be replaced as part of the perimeter security work occurring concurrently within this zone.
- Work to restore the aggregate stone sidewalks along NJ Avenue NW has been completed.
- The perimeter security team continues to assemble the formwork for the circular planter near the North Entrance.

Library of Congress (LOC) Tunnel

- Waterproofing is now complete in the tunnel below First Street and workers have begun removing the temporary bridge on First Street SE above the tunnel zone. The bridge removal and subsequent backfilling may be completed by the end of the week. Asphalt paving and restoration of the First Street roadbed may be completed by the end of next week. Traffic lanes have shifted to the east side of First Street to facilitate removal of the bridge structure.
- Crews will continue to place concrete along the eastern end of the tunnel with the northwest grounds of the LOC. All concrete placements may be completed by early December.

Next Week – 12/06/04 – 12/10/04

East Front Plaza Work

- Workers will continue placing the granite paving stones on the CVC roof deck and other plaza deck work in preparation of the inauguration in January 2005.
- Crews will continue to install utilities, build mechanical spaces, place concrete, erect blockwork, and backfill the zones near the CVC entrances.

East Front Extension

- Steel crews will continue to erect steel and place concrete within the East Front concrete structure. Demolition of structural elements and clearing activities will continue in various zones within the East Front.

Truck Tunnel Construction

- Restoration of Northwest Drive will continue, including the placement of asphalt and the restoration of sidewalks.

Library of Congress (LOC) Tunnel

- Formwork assembly, concrete placements and waterproofing will continue in various zones along the LOC tunnel route especially within the northwest grounds of the LOC. Pedestrian access will continue along the east side of the work zone. Existing traffic patterns may change slightly depending upon the progress of the removal of the temporary bridge along First Street SE and the restoration of the First Street roadbed.



United States Capitol Visitor Center Weekly Construction Summary



Prepared by the Capitol Visitor Center Project Office, Architect of the Capitol

December 6, 2004



A worker installs a glass pane for one of four skylights near the face of the Capitol on the north side of the Plaza.

This Week – Ongoing Work – 12/06/04 through 12/010/04

CVC and East Front Plaza Highlights:

- Milestone: The tower crane in the southwest quadrant was dismantled and removed this past weekend.
- A crew has begun to install the skylight in the grass bed on the House side of the Capitol as part of the effort to prepare the East Front Plaza for the inauguration. The glass for the small outer skylights within the grass beds and the two large skylights in the center of the Plaza will not be installed prior to the inauguration, but will receive temporary covers. These skylight openings will continue to be used to transport materials from the Plaza level to the interior of the facility.
- Stone masons have now placed more than 148,000 granite pavers on the CVC roof deck. The pavers will cover the western half of the CVC roof deck in time for the inauguration.
- All major concrete placements for the upper roof slab in the northeast and southeast quadrants have been completed and final waterproofing tests are occurring.
- Dump trucks continue to backfill the sloping pedestrian entrance zones in the eastern half of the site.
- Workers continue to build mechanical spaces, erect interior blockwork, and install utilities throughout the site.

East Front Extension (EFE) (Inside the Capitol)

- Crews have placed concrete for the central grand staircase that connects the CVC to the Capitol at the Crypt level.
- Crews have completed major demolition activities to clear the way for elevators, escalators, stairwells and new mechanical systems and will continue the removal of temporary shoring steel.

Truck Tunnel Construction

- The truck tunnel is open to trucks delivering materials in support of the Sequence 2 contract. The tunnel is not expected to open to general truck traffic (in support of Capitol operations) until 2006 when all interior support facilities, freight elevators and connecting corridors are completed.
- Crews will continue to place asphalt to restore Northwest Drive and the traffic lanes at the North Barricade Entrance.
- The perimeter security team continues has placed the concrete for the circular planter near the North Barricade Entrance (*see center of photo at right*).



Construction activity on the north side of the Capitol is rapidly diminishing now that backfill and paving operations above the new truck tunnel are nearly complete. All the work in this zone, including perimeter security work, will be ready to accommodate a presidential motorcade in time for the inauguration.

Library of Congress (LOC) Tunnel

- Waterproofing is now complete in the tunnel below First Street and workers have removed the temporary bridge on First Street SE above the tunnel zone. Asphalt paving and restoration of the First Street roadbed may be completed by the end of next week. Traffic lanes continue along the east side of First Street to facilitate the final paving activities, which will occur in two phases.
- Crews will continue to place concrete along the eastern end of the tunnel with the northwest grounds of the LOC. All concrete placements will be completed by early December.

Next Week – 12/13/04 – 12/17/04

CVC and East Front Plaza Work

- All of the major structural work by the Sequence 1 Contractor, Centex Construction, is expected to be complete.
- Workers will continue placing the granite paving stones on the CVC roof deck and other plaza deck work in preparation of the inauguration in January 2005.
- Crews will continue to install utilities, build mechanical spaces, place concrete, erect blockwork, and backfill the zones near the CVC entrances.

East Front Extension

- Removal of temporary shoring and minor demolition activities will occur. All major steel erection and demolition has been completed.
- Crews will continue to place concrete for stairs, walls and mechanical systems.

Truck Tunnel Construction

- Restoration of Northwest Drive and the Senate Plaza will continue, including the placement of asphalt, removal of fences, placement of pavers and the restoration of sidewalks.

Library of Congress (LOC) Tunnel

- **Concrete** placements and waterproofing will continue in various zones along the LOC tunnel route especially within the northwest grounds of the LOC. Pedestrian access and traffic flow will continue at least for one more week along the east side of the work zone.



Sunlight streams in through one of two grand skylights above the CVC's Great Hall and partially illuminates the staircase at the south end. All of the structural work in this zone is expected to be completed by the end of next week.



United States Capitol Visitor Center Weekly Construction Summary



Prepared by the Capitol Visitor Center Project Office, Architect of the Capitol

December 13, 2004



Speaker of the House, J. Dennis Hastert (center) visited the CVC project site on Thursday, Dec. 9. Architect of the Capitol Alan Hantman (right) led the tour, which included a walk through House expansion space, the CVC Great Hall, orientation theaters and the exhibition gallery space.

This Week – Ongoing Work – 12/13/04 through 12/17/04

CVC and East Front Plaza Highlights:

- Stone masons have now placed more than 150,000 granite pavers on the CVC roof deck.
- Two interior skylights in the grass beds near the face of the Capitol have now been installed as part of the effort to prepare the East Front Plaza for the inauguration. The small outer skylights within the grass beds and the two large skylights in the center of the Plaza have now been capped with temporary covers. These skylight openings will be used after the inauguration to transport materials from the Plaza level to the interior of the facility.
- All major structural work has been completed, including concrete placements for the roof deck, interior slabs, and all interior staircases.
- Dump trucks continue to backfill the sloping pedestrian entrance zones in the eastern half of the site.
- Workers continue to build mechanical spaces, erect interior blockwork, and install utilities throughout the site.

East Front Extension (EFE) (Inside the Capitol)

- All major steel erection and demolition activities are completed inside the East Front. Sequence 2 (build-out and finishes) contractors will begin installing mechanical systems and utilities in this zone.

Truck Tunnel Construction

- The truck tunnel is open to trucks delivering materials in support of the Sequence 2 contract.
- Crews have completed placing the asphalt necessary to restore Northwest Drive and the traffic lanes at the North Barricade Entrance. Striping and other finishing activities will occur over the next few weeks.

Library of Congress (LOC) Tunnel

- Asphalt paving and restoration work continue along First Street near the tunnel zone. Both sides of First Street are now open to traffic.
- Crews will continue to place concrete along the eastern end of the tunnel within the northwest grounds of the LOC. All concrete placements will be completed by mid-December.



A worker installs a sealant between the glass panes of a CVC skylight located on the House side of the East Front Plaza. Other skylights will be covered for the inauguration.

Next Week – 12/20/04 – 12/24/04

CVC and East Front Plaza Work

- All of the major structural work by the Sequence 1 Contractor, Centex Construction, is expected to be complete.
- Workers will continue placing the granite paving stones on the CVC roof deck and continue with other plaza deck work in preparation of the inauguration in January 2005.
- Crews will continue to install utilities, build mechanical spaces, place concrete, erect blockwork, and backfill the zones near the CVC entrances.

East Front Extension

- Removal of temporary shoring and minor demolition activities will continue. All major steel erection and demolition activities have been completed.

Truck Tunnel Construction

- Restoration of Northwest Drive and the Senate Plaza will continue, including the removal of fences, placement of pavers and the restoration of sidewalks.

Library of Congress (LOC) Tunnel

- Concrete placements and waterproofing will continue in various zones along the LOC tunnel route, especially within the northwest grounds of the LOC. Pedestrian access will continue along the east side of the work zone.



The Sequence 1 contractor, Centex Construction, has now completed all of the major structural elements of the CVC, including interior and exterior stairwells. Most of the remaining minor work in the Sequence 1 contract will be completed in December, while the structure for the tunnel to the Library of Congress will be completed in late January.



United States Capitol Visitor Center Weekly Construction Summary



Prepared by the Capitol Visitor Center Project Office, Architect of the Capitol

December 20, 2004



During a recent CVC site walk with Sequence 1 (Centex Construction Group) and Sequence 2 (Manhattan Construction Co.) contractors, Architect of the Capitol Alan Hantman (center) points out a structural element in the upper level. The site walk was one of several activities held December 9, 2004, to mark the completion of foundation and structure work and the transition of the project site from Centex to Manhattan.

This Week – Ongoing Work – 12/20/04 through 12/24/04

CVC and East Front Plaza Highlights:

- All major structural work for the CVC has been completed, including concrete placements for the roof deck, interior slabs, and all interior staircases. Work on the Library of Congress tunnel will be completed in late January 2005.
- Stone masons have now placed more than 160,000 granite pavers on the CVC roof deck.
- Two interior skylights in the grass beds near the face of the Capitol have now been installed as part of the effort to prepare the East Front Plaza for the inauguration and construction fencing has been reconfigured to allow greater access to the East Front Plaza near the House and Senate Steps.
- Dump trucks continue to backfill the sloping pedestrian entrance zones in the eastern half of the site.
- Sequence 2 workers continue to build mechanical spaces, erect interior block work, and install utilities throughout the site.

East Front Extension (EFE) (Inside the Capitol)

- All major steel erection and demolition activities are completed inside the East Front. Sequence 2 (build-out and finishes) contractors will continue installing mechanical systems and utilities in this zone.

Truck Tunnel Construction

- The truck tunnel is open to trucks delivering materials in support of the Sequence 2 contract.
- Crews have completed placing the asphalt necessary to restore Northwest Drive and the traffic lanes at the North Barricade Entrance. Striping and other finishing activities will occur over the next few weeks and will be completed prior to the inaugural on January 20, 2005.



Clearing out: The Sequence 1 contractor, Centex Construction, has now completed all of the major structural elements of the CVC and has now begun clearing personnel, materials and equipment from the site.

Library of Congress (LOC) Tunnel

- Asphalt paving and restoration work continues along First Street near the tunnel zone. Both sides of First Street are now open to traffic.
- All major concrete placements are now complete. Waterproofing will be completed later this month once the concrete cures (longer cure times due to the colder temperatures) along the eastern end of the tunnel. First Street has been paved and striping will occur later this month once temperatures rise.

Next Week – 12/27/04 – 1/03/05

CVC and East Front Plaza Work

- Workers will continue placing the granite paving stones on the CVC roof deck and continue with other plaza deck work in preparation for the inaugural in January.
- Crews will continue to install utilities, build mechanical spaces, place concrete, erect blockwork, and backfill the zones near the CVC entrances.

East Front Extension

- Removal of temporary shoring and minor demolition activities will continue. All major steel erection and demolition activities have been completed.
- Installation of mechanical systems and utilities will continue.



A worker secures one of 32 glass panes to a CVC skylight on the East Plaza.

Truck Tunnel Construction

- Restoration of Northwest Drive and the Senate Plaza will continue, including the removal of fences, placement of pavers, striping, and the restoration of sidewalks and landscaped areas.



Library of Congress (LOC) Tunnel

- Waterproofing and backfilling will continue in various zones along the LOC tunnel route, especially within the northwest grounds of the LOC.

For the first time in nearly three years, the East Front Plaza adjacent to the House Steps is accessible to pedestrians. The CVC construction perimeter fence has been moved as part of the effort to prepare the Plaza for the inaugural in January 2005.

If you have any questions about the Capitol Visitor Center Project, please contact Tom Fontana, CVC project communications officer, at (202) 228-1310, or by e-mail at tfontana@aoc.gov. You can read this document and previous editions on the CVC web site at www.aoc.gov.