



United States Capitol Visitor Center

Weekly Construction Summary



Prepared by the Capitol Visitor Center Project Office, Architect of the Capitol, March 10, 2003

This Month – March 2003

East Front (Inside the Capitol)

- **The 2nd and 3rd Floor corridors within the East Front Extension will be closed beginning March 17, 2003**, to clear the way for CVC construction activity, including improvements to vertical mobility (new elevators and stairwells) within the Capitol. **The elevator at each end of the construction zone, H-10 on the House side, S-7 on the Senate side, will be removed from service at this time.** The stairwells next to each elevator will remain accessible throughout construction and will continue to serve as emergency access routes.
- **The Basement corridor within the East Front Extension will be closed beginning March 31, 2003.** All East Front corridors affected by construction will be re-opened near the final completion stage of the CVC in 2005. Additional details will be provided through Capitol Superintendent Building Notices and CVC construction notices, as well as postings in the affected corridors
- Later this week, information related to new staff-led tour routes will be distributed to all offices.

This Week – Ongoing Work – 3/10/03 through 3/14/03

- This week, test pits will continue to be excavated along portions of East Capitol Street to accommodate CVC utility work. Work began near First Street and is continuing eastward toward Second Street. Impacts of this work on parking have been coordinated with the Supreme Court and the Library of Congress. Traffic will be constricted at times around the construction zone but traffic flow in both directions will be maintained at all times.
- Significant tunnel construction activity continues in New Jersey Avenue NW, along Constitution Ave. NW, along upper Northwest Drive and on the East Front Plaza (details provided below).

East Front Plaza Work

- Major excavation of the site has begun on the Senate side within the northeast corner of the site.
- Construction of the CVC foundation walls continues on both the House and Senate sides of the site and approximately **90 percent** of the panels on the Senate side, and **65 percent** on the House side, are in place.
- Demolition work has been completed below the first floor windows on the House side.

House Side

- Crews will continue construction of a CVC tunnel connector to the existing Cannon Tunnel near the House Steps and Carriageway. A new drive loop and Member drop-off area have been established just south of the existing drive loop and Member drop-off area. The Carriageway Door, the House Door and the House Steps will remain accessible at all times. At the completion of the tunnel work, which is expected in three to four months, the drive loop will revert to its current alignment adjacent to the House Carriageway.

Senate Side (Outside the Main Construction Fence)

Tunnel Construction:

- A second crane is being assembled within the tunnel construction zone on the East Front Plaza. The 90-foot high crane will support large counter-rotating drill bits (augers) that will be used for excavation.
- CVC tunnel construction work continues on the East Front Plaza adjacent to and within the Senate triangular parking area. The tunnel construction work on the Plaza will continue until December 2003.

- Excavation work related to the CVC service tunnel continues in Constitution Avenue NW just east of the intersection of New Jersey Avenue NW. The tunnel work in this zone will continue for several months.
- CVC tunnel construction work continues along the east side of New Jersey Avenue NW between Constitution Avenue and C Street. The east sidewalk in this location will continue to be closed, but the west sidewalk is accessible. The street will continue to be restricted to one lane and one way traffic traveling southbound.

Senate-Side Utility Work:

- An 80-foot section of Second Street NE, between Massachusetts Ave. NE and D Street NE, will remain closed temporarily to clear the way for CVC utility work in this zone. Detour signs have been posted to safely re-route traffic around the construction zone. The sidewalk along the east side of Second Street NE is open for pedestrian access through the construction zone. The work in this zone will be completed later this month.
- Utility work on First Street NE between C and D Streets has been completed.
- The North Door, the Senate Steps and the Senate Carriageway Door remain accessible to pedestrians throughout construction.

Next Week – Anticipated Work – 3/17/03 through 3/21/03

East Front

- **The corridors on the 2nd and 3rd Floor within the East Front Extension will close for CVC construction on Monday, March 17, 2003. The elevator at each end of the construction zone, H-10 on the House side, S-7 on the Senate side, will be removed from service at this time. The stairwells next to each elevator will remain accessible throughout construction and will continue to serve as emergency access routes.**

East Front Plaza Work

- Foundation and guide wall excavation and construction will continue on both the Senate and House sides of the CVC construction site. Some large equipment will continue to be situated close to the east face of the Capitol building. The East Front facade is being protected by a protective tarp that is being suspended from the Capitol roof along the portion of the building where excavation work is occurring.
- Major excavation of the site continues on the Senate side within the northeast corner of the site.
- Test pits will continue to be excavated along portions of East Capitol Street to accommodate CVC utility work.

House Side (Outside the Construction Fence)

- Crews will continue construction of a CVC connector tunnel to the existing Cannon Tunnel near the House Steps. The Carriageway Door, the House Door and the House Steps will remain accessible at all times.

Senate Side (Outside the Construction Fence)

- CVC tunnel work will continue in a portion of the East Front Plaza on the Senate side, Northwest Drive, along New Jersey Avenue NW, and in Constitution Avenue NW, just east of New Jersey Avenue NW.
- Utility work will continue along Second Street NE between Massachusetts Avenue NE and D Street NE. This portion of Second Street will remain closed to vehicular traffic. The sidewalk along the east side of Second Street NE within the construction zone will remain accessible to pedestrians at all times.

*- If you have any questions about the Capitol Visitor Center Project, please contact **Tom Fontana**, CVC Project Communications Officer for the Architect of the Capitol, at (202) 228-1310, or by e-mail at: tfontana@aac.gov. You can read this document and previous editions on our web site at www.aoc.gov.*

- If you experience any problems to building services inside the Capitol, please contact the Capitol Building Service Center at (202) 228-8800.



United States Capitol Visitor Center

Weekly Construction Summary



Prepared by the Capitol Visitor Center Project Office, Architect of the Capitol, March 17, 2003

This Month – March 2003

East Front (Inside the Capitol)

- **The 2nd and 3rd Floor corridors within the East Front are now closed to pedestrian traffic.** Barrier walls will be erected during the week to completely seal the construction zone and to clear the way for CVC construction activity, including improvements to vertical mobility (new elevators and stairwells) within the Capitol. **The elevators at each end of the construction zone, H-10 on the House side, S-7 on the Senate side, ARE OUT OF SERVICE.** The stairwells next to each elevator will remain accessible throughout construction and will continue to serve as emergency access routes.
- **The Basement corridor within the East Front Extension will be closed beginning March 31, 2003.** All East Front corridors affected by construction will be re-opened near the final completion stage of the CVC in 2005. Additional details will be provided through Capitol Superintendent Building Notices and CVC construction notices, as well as postings in the affected corridors
- Information related to new staff-led tour routes has been distributed to all offices. Additional information is being distributed by the Capitol Guide Service at the entrances to the Cannon and Russell Tunnels.

This Week – Ongoing Work – 3/17/03 through 3/21/03

- This week, test pits will continue to be excavated along portions of East Capitol Street to accommodate CVC utility work. Work began near First Street and is continuing eastward toward Second Street. Impacts of this work on parking have been coordinated with the Supreme Court and the Library of Congress. Traffic will be constricted at times around the construction zone but traffic flow in both directions will be maintained at all times.
- Significant tunnel construction activity continues in New Jersey Avenue NW, along Constitution Ave. NW, along upper Northwest Drive and on the East Front Plaza (details provided below).

East Front Plaza Work

- Site excavation continues on the Senate side within the northeast corner of the site.
- Construction of the CVC foundation walls is nearly complete on both the House and Senate sides of the site.

House Side

- Crews will continue construction of a CVC tunnel connector to the existing Cannon Tunnel near the House Steps and Carriageway. A new drive loop and Member drop-off area have been established just south of the existing drive loop and Member drop-off area. **The Carriageway Door, the House Door and the House Steps will remain accessible at all times.** At the completion of the tunnel work, which is expected in three to four months, the drive loop will revert to its current alignment adjacent to the House Carriageway.

Senate Side (Outside the Main Construction Fence)

Tunnel Construction:

- A second crane has been assembled within the tunnel construction zone on the East Front Plaza. The 90-foot high crane will support large counter-rotating drill bits (augers) that will be used for excavation.
- CVC tunnel construction work continues on the East Front Plaza adjacent to and within the Senate triangular parking area. The tunnel construction work on the Plaza will continue until December 2003.

- Excavation work related to the CVC service tunnel continues in Constitution Avenue NW just east of the intersection of New Jersey Avenue NW. The tunnel work in this zone will continue for several months.
- CVC tunnel construction work continues along the east side of New Jersey Avenue NW between Constitution Avenue and C Street. The east sidewalk in this location will continue to be closed, but the west sidewalk is accessible. The street will continue to be restricted to one lane and one way traffic traveling southbound.

Senate-Side Utility Work:

- CVC utility work along Second Street NE, between Massachusetts Ave. NE and D Street NE is expected to be completed at the end of the week. Detour signs will be removed and normal traffic flow will resume. However, Washington Gas may resume work one week later to repair a gas line in this zone. This work will impact the intersection of Second Street and D Street NE for approximately four days. More specific information will be distributed later this week as a work plan is finalized.
- The North Door, the Senate Steps and the Senate Carriageway Door remain accessible to pedestrians throughout construction.

Next Week – Anticipated Work – 3/24/03 through 3/28/03

East Front

- **Preparations will continue for the closure of the Basement corridor within the East Front Extension on March 31, 2003. Some wayfinding signs have already been posted in the basement to facilitate staff-led tours, but additional signage will be posted as the closure date nears. The stairwells at each side of the construction zone will remain accessible throughout construction and will continue to serve as emergency access routes.**

East Front Plaza Work

- Excavation and foundation wall construction will continue on both the Senate and House sides of the CVC construction site. Some large equipment will continue to be situated close to the east face of the Capitol building. The East Front facade is being protected by a protective tarp that is being suspended from the Capitol roof along the portion of the building where excavation work is occurring.
- Major excavation of the site continues on the Senate side within the northeast corner of the site.
- Test pits will continue to be excavated along portions of East Capitol Street to accommodate CVC utility work.

House Side (Outside the Construction Fence)

- Crews will continue construction of a CVC connector tunnel to the existing Cannon Tunnel near the House Steps. The Carriageway Door, the House Door and the House Steps will remain accessible at all times.

Senate Side (Outside the Construction Fence)

- CVC tunnel work will continue in a portion of the East Front Plaza on the Senate side, Northwest Drive, along New Jersey Avenue NW, and in Constitution Avenue NW, just east of New Jersey Avenue NW.
- Utility work is expected to be complete along Second Street NE between Massachusetts Avenue NE and D Street NE. However, during the following week, Washington Gas may resume work in the intersection of Second Street and D Street NE, which may last four days. Additional information will be distributed as a work-plan is finalized.

*- If you have any questions about the Capitol Visitor Center Project, please contact **Tom Fontana**, CVC Project Communications Officer for the Architect of the Capitol, at (202) 228-1310, or by e-mail at: tfontana@aac.gov. You can read this document and previous editions on our web site at www.aoc.gov.*

- If you experience any problems to building services inside the Capitol, please contact the Capitol Building Service Center at (202) 228-8800.



United States Capitol Visitor Center

Weekly Construction Summary



Prepared by the Capitol Visitor Center Project Office, Architect of the Capitol, March 24, 2003

This Week - East Front (Inside the Capitol)

- **The Basement corridor within the East Front Extension will be closed Monday, March 31, 2003.** All East Front corridors affected by construction will be re-opened near the final completion stage of the CVC in 2005. New staff-led tour wayfinding signs have already been posted in the basement for tours coming from both the Cannon and Russell Tunnels. Additional signs to identify alternate and accessible routes will be posted on Friday, March 28.
- **The 2nd and 3rd Floor corridors within the East Front are now closed to pedestrian traffic.** Barrier walls have been erected to seal the construction zone and to clear the way for CVC construction activity, including improvements to vertical mobility (new elevators and stairwells) within the Capitol. **The elevators at each end of the construction zone, H-10 on the House side, S-7 on the Senate side, ARE OUT OF SERVICE.** The stairwells next to each elevator will remain accessible throughout construction and will continue to serve as emergency access routes.
- Information related to new staff-led tour routes has been distributed to all offices. Additional information is being distributed by the Capitol Guide Service at the entrances to the Cannon and Russell Tunnels. In addition, staffers leading tours are strongly encouraged to familiarize themselves with the new tour routes before leading groups into the Capitol.

This Week – Ongoing Work – 3/24/03 through 3/28/03

- Utility work is required in the intersection of Second Street NE and D Street NE. Traffic is being rerouted around the construction zone between the hours of 9:30 AM and 3:30 PM. At 3:30 PM each afternoon, the excavation will be “plated” and the intersection will be re-opened to accommodate rush hour traffic. This work is being performed by Washington Gas and is expected to be completed early next week.
- This week, test pits will continue to be excavated along portions of East Capitol Street to accommodate CVC utility work. Work began near First Street and is continuing eastward toward Second Street. Impacts of this work on parking have been coordinated with the Supreme Court and the Library of Congress. Traffic will be constricted at times around the construction zone but traffic flow in both directions will be maintained at all times.
- Significant tunnel construction activity continues in New Jersey Avenue NW, along Constitution Ave. NW, along upper Northwest Drive and on the East Front Plaza (details provided below).

East Front Plaza Work

- Site excavation continues on the Senate side within the northeast corner of the site.
- Construction of the CVC foundation walls is nearly complete on both the House and Senate sides of the site.

House Side

- Crews will continue construction of a CVC tunnel connector to the existing Cannon Tunnel near the House Steps and Carriageway. A new drive loop and Member drop-off area have been established just south of the existing drive loop and Member drop-off area. **The Carriageway Door, the House Door and the House Steps will remain accessible at all times.** At the completion of the tunnel work, which is expected in three to four months, the drive loop will revert to its previous alignment adjacent to the House Carriageway.

Senate Side (Outside the Main Construction Fence)

Tunnel Construction:

- A second crane has been assembled within the tunnel construction zone on the East Front Plaza. The 90-foot high crane supports large counter-rotating drill bits (augers) that are being used for excavation.
- CVC tunnel construction work continues on the East Front Plaza adjacent to and within the Senate triangular parking area.
- Excavation work related to the CVC service tunnel continues in Constitution Avenue NW just east of the intersection of New Jersey Avenue NW. The tunnel work in this zone will continue for several months.
- CVC tunnel construction work continues along the east side of New Jersey Avenue NW between Constitution Avenue and C Street. The east sidewalk in this location will continue to be closed, but the west sidewalk is accessible. The street will continue to be restricted to one lane and one way traffic traveling southbound.
- The North Door, the Senate Steps and the Senate Carriageway Door remain accessible to pedestrians throughout construction.

Senate-Side Utility Work:

- Utility work is required in the intersection of Second Street NE and D Street NE. Traffic is being rerouted around the construction zone between the hours of 9:30 AM and 3:30 PM. At 3:30 PM each afternoon, the excavation will be “plated” and the intersection will be re-opened to accommodate rush hour traffic. This work is being performed by Washington Gas and is expected to be completed by the middle of next week.

Next Week – Anticipated Work – 3/31/03 through 4/04/03

East Front

- **The Basement corridor within the East Front Extension will be closed to pedestrians on Monday, March 31, 2003. Barrier walls will be erected during the day and will be completed by Tuesday morning.** Some wayfinding signs have already been posted in the basement to facilitate staff-led tours, but additional signage will be posted as the closure date nears. The stairwells at each side of the construction zone will remain accessible throughout construction and will continue to serve as emergency access routes.

East Front Plaza Work

- Excavation and foundation wall construction will continue on both the Senate and House sides of the CVC construction site. Some large equipment will continue to be situated close to the east face of the Capitol building. The East Front facade is being protected by a protective tarp that is being suspended from the Capitol roof along the portion of the building where excavation work is occurring.
- Major excavation of the site continues on the Senate side within the northeast corner of the site.
- Test pits will continue to be excavated along portions of East Capitol Street to accommodate CVC utility work.

House Side (Outside the Construction Fence)

- Crews will continue construction of a CVC connector tunnel to the existing Cannon Tunnel near the House Steps. The Carriageway Door, the House Door and the House Steps will remain accessible at all times.

Senate Side (Outside the Construction Fence)

- CVC tunnel work will continue in a portion of the East Front Plaza on the Senate side, Northwest Drive, along New Jersey Avenue NW, and in Constitution Avenue NW, just east of New Jersey Avenue NW.
- Utility work at the intersection of Second Street NE and D Street NE is expected to be completed by mid-week.

*- If you have any questions about the Capitol Visitor Center Project, please contact **Tom Fontana**, CVC Project Communications Officer for the Architect of the Capitol, at (202) 228-1310, or by e-mail at: tfontana@aoc.gov. You can read this document and previous editions on our web site at www.aoc.gov.*

- If you experience any problems to building services inside the Capitol, please contact the Capitol Building Service Center at (202) 228-8800.



United States Capitol Visitor Center

Weekly Construction Summary



Prepared by the Capitol Visitor Center Project Office, Architect of the Capitol, March 31, 2003

This Week - East Front (Inside the Capitol)

- **The basement corridor within the East Front Extension IS NOW CLOSED.** However, the stairwells adjacent to the barrier walls on both sides of the construction zone **will remain open** throughout the construction period. Both stairwells provide access to the First Floor only and the Senate side stairwell will continue to be used for staff-led tours.
- The elevators at each end of the construction zone, H-10 on the House side, S-7 on the Senate side, **ARE OUT OF SERVICE.** All East Front corridors affected by construction will be re-opened near the final completion stage of the CVC in 2005.
- New staff-led tour wayfinding signs have already been posted in the basement for tours coming from both the Cannon and Russell Tunnels. Additional signs have been posted to identify accessible routes around the construction zone on the basement level.
- **The 2nd and 3rd Floor corridors within the East Front are also closed.** Barrier walls have been erected to seal the construction zone and to clear the way for CVC construction activity, including improvements to vertical circulation (new elevators and stairwells) within the Capitol.

This Week – Ongoing Work – 3/31/03 through 4/04/03

- Utility work has been completed in the intersection of Second Street NE and D Street NE and traffic flow through the intersection has resumed. However, utility work continues on Second Street NE between D Street NE and Massachusetts Ave. NE. This work is expected to be completed by the end of this week. Repaving activities are expected to occur during the upcoming recess.
- Test pits will continue to be excavated along portions of East Capitol Street to accommodate CVC utility work. Work began near First Street and is continuing eastward toward Second Street. Traffic will be constricted at times around the construction zone but traffic flow in both directions will be maintained at all times.
- This Saturday, April 5, crews will use saws to cut the asphalt for a utility trench in East Capitol Street. Some parking around the construction zone will be impacted so that traffic can be maintained in both directions.
- Significant tunnel construction activity continues in New Jersey Avenue NW, along Constitution Ave. NW, along upper Northwest Drive and on the East Front Plaza.

East Front Plaza Work

- Site excavation continues on the Senate side within the northeast corner of the site.
- Construction of the CVC foundation walls is nearly complete on both the House and Senate sides of the site.
- Foundation work will continue adjacent to the House side façade for two more weeks.

House Side

- Crews continue construction of a CVC tunnel connector to the existing Cannon Tunnel near the House Steps and Carriageway. **The Carriageway Door, the House Door and the House Steps will remain accessible at all times.** At the completion of the tunnel work, which is expected in two to three months, the drive loop will revert to its previous alignment adjacent to the House Carriageway.

Senate Side (Outside the Main Construction Fence)

Tunnel Construction:

- CVC tunnel construction work continues on the East Front Plaza adjacent to and within the Senate triangular parking area.
- Excavation work related to the CVC service tunnel continues in Constitution Avenue NW just east of the intersection of New Jersey Avenue NW. The tunnel work in this zone will continue for several months.
- CVC tunnel construction work continues along the east side of New Jersey Avenue NW between Constitution Avenue and C Street. The east sidewalk in this location will continue to be closed, but the west sidewalk is accessible. The street will continue to be restricted to one lane and one way traffic traveling southbound.
- The North Door, the Senate Steps and the Senate Carriageway Door remain accessible to pedestrians throughout construction.

Senate-Side Utility Work:

- Utility work along Second Street NE continues between Massachusetts Avenue NE and D Street NE and is expected to be completed by the end of the week. This work is expected to be completed by the end of this week and repaving activities are expected to occur during the upcoming recess.

Next Week – Anticipated Work – 4/07/03 through 4/11/03

East Front

- **All corridors within the East Front Extension will remain closed until completion of the CVC in 2005.** Barrier walls have been erected, but the stairwells at each side of the construction zone will remain accessible throughout construction and will continue to serve as emergency access routes and provide access to the First Floor for staff-led tours.

East Front Plaza Work

- Excavation and foundation wall construction will continue on both the Senate and House sides of the CVC construction site. Some large equipment will continue to be situated close to the east face of the Capitol building on the House side for two more weeks. The East Front facade is being protected by a protective tarp that is being suspended from the Capitol roof along the portion of the building where excavation work is occurring.
- Major excavation of the site continues on the Senate side within the northeast corner of the site.

House Side (Outside the Construction Fence)

- Crews will continue construction of a CVC connector tunnel to the existing Cannon Tunnel near the House Steps. The Carriageway Door, the House Door and the House Steps will remain accessible at all times.

Senate Side (Outside the Construction Fence)

- CVC tunnel work will continue in a portion of the East Front Plaza on the Senate side, Northwest Drive, along New Jersey Avenue NW, and in Constitution Avenue NW, just east of New Jersey Avenue NW.
- Utility work is expected to be completed on Second Street NE between Massachusetts Avenue NE and D Street NE and paving activities may begin.
- Test pits will continue to be excavated along portions of East Capitol Street to accommodate CVC utility work.

- If you have any questions about the Capitol Visitor Center Project, please contact **Tom Fontana**, CVC Project Communications Officer for the Architect of the Capitol, at **(202) 228-1310**, or by e-mail at: tfontana@aac.gov. You can read this document and previous editions on our web site at www.aoc.gov.

- If you experience any problems to building services inside the Capitol, please contact the Capitol Building Service Center at (202) 228-8800.



United States Capitol Visitor Center

Weekly Construction Summary



Prepared by the Capitol Visitor Center Project Office, Architect of the Capitol, April 7, 2003

This Week - East Front (Inside the Capitol)

- **The basement corridor within the East Front Extension IS NOW CLOSED.** However, the stairwells adjacent to the barrier walls on both sides of the construction zone **will remain open** throughout the construction period. Both stairwells provide access to the First Floor only and the Senate side stairwell will continue to be used for staff-led tours.
- The elevators at each end of the construction zone, H-10 on the House side, S-7 on the Senate side, **ARE OUT OF SERVICE**. All East Front corridors affected by construction will be re-opened near the final completion stage of the CVC in 2005.
- New staff-led tour wayfinding signs have already been posted in the basement for tours coming from both the Cannon and Russell Tunnels. Additional signs have been posted to identify accessible routes around the construction zone on the basement level.
- **The 2nd and 3rd Floor corridors within the East Front are also closed.** Barrier walls have been erected to seal the construction zone and to clear the way for CVC construction activity, including improvements to vertical circulation (new elevators and stairwells) within the Capitol.

This Week – Ongoing Work – 4/07/03 through 4/11/03

- Utility work has been completed along Second Street NE between D Street NE and Massachusetts Avenue NE and normal traffic flow has resumed. Repaving activities are expected to occur during the upcoming recess, but traffic flow will be maintained in both directions while this work is accomplished.
- Test pits will continue to be excavated along portions of East Capitol Street to accommodate CVC utility work. Work began near First Street and is continuing eastward toward Second Street. Traffic will be constricted at times around the construction zone but traffic flow in both directions will be maintained at all times.
- Significant tunnel construction activity continues in New Jersey Avenue NW, along Constitution Ave. NW, along upper Northwest Drive and on the East Front Plaza.

East Front Plaza Work

- Site excavation continues on the Senate side within the northeast corner of the site.
- Construction of the CVC foundation walls is complete on the Senate side of the site and is nearing completion on the House side.
- Foundation wall construction will continue adjacent to the House side façade for two more weeks.

House Side

- Crews continue construction of a CVC tunnel connector to the existing Cannon Tunnel near the House Steps and Carriageway. **The Carriageway Door, the House Door and the House Steps will remain accessible at all times.** At the completion of the tunnel work, which is expected in two to three months, the drive loop will revert to its previous alignment adjacent to the House Carriageway.

Senate Side (Outside the Main Construction Fence)

Tunnel Construction:

- CVC tunnel construction work continues on the East Front Plaza adjacent to and within the Senate triangular parking area.
- Excavation work related to the CVC service tunnel continues in Constitution Avenue NW just east of the intersection of New Jersey Avenue NW. The tunnel work in this zone will continue for several months.
- CVC tunnel construction work continues along the east side of New Jersey Avenue NW between Constitution Avenue and C Street. The east sidewalk in this location will continue to be closed, but the west sidewalk is accessible. The street will continue to be restricted to one lane and one way traffic traveling southbound.
- The North Door, the Senate Steps and the Senate Carriageway Door remain accessible to pedestrians throughout construction.

Senate-Side Utility Work:

- Utility work along Second Street NE between Massachusetts Avenue NE and D Street NE is complete and repaving activities are expected to occur during the upcoming recess. Normal traffic flow has resumed.

Next Week – Anticipated Work – 4/14/03 through 4/18/03

East Front Plaza Work

- Excavation and foundation wall construction will continue on both the Senate and House sides of the CVC construction site. Some large equipment will continue to be situated close to the east face of the Capitol building on the House side. The East Front facade is being protected by a protective tarp that is being suspended from the Capitol roof along the portion of the building where excavation work is occurring.
- Major excavation of the site continues on the Senate side within the northeast corner of the site and approximately 250-300 truckloads of soil are removed each day.

House Side (Outside the Construction Fence)

- Crews will continue construction of a CVC connector tunnel to the existing Cannon Tunnel near the House Steps. The Carriageway Door, the House Door and the House Steps will remain accessible at all times.

Senate Side (Outside the Construction Fence)

- CVC tunnel work will continue in a portion of the East Front Plaza on the Senate side, Northwest Drive, along New Jersey Avenue NW, and in Constitution Avenue NW, just east of New Jersey Avenue NW.
- Utility work is expected to be completed on Second Street NE between Massachusetts Avenue NE and D Street NE and paving activities may begin.

*- If you have any questions about the Capitol Visitor Center Project, please contact **Tom Fontana**, CVC Project Communications Officer for the Architect of the Capitol, at **(202) 228-1310**, or by e-mail at: tfontana@aoc.gov. You can read this document and previous editions on our web site at www.aoc.gov.*

- If you experience any problems to building services inside the Capitol, please contact the Capitol Building Service Center at (202) 228-8800.



United States Capitol Visitor Center Weekly Construction Summary



Prepared by the Capitol Visitor Center Project Office, Architect of the Capitol, April 14, 2003

This Week – Ongoing Work – 4/14/03 through 4/18/03

- Second Street NE, between D Street NE and Massachusetts Avenue NE, is closed to allow for addition utility work to be completed in this zone. This portion of Second Street will remain closed until repaving activities are completed next week. Traffic is being rerouted around the work zone, but pedestrian access through the work zone is maintained.
- Utility work has been completed along Second Street NE between D Street NE and Massachusetts Avenue NE. Repaving activities have begun, but traffic flow will be maintained in both directions while this work is accomplished. Weather permitting, all repaving work is expected to be completed by Friday, May 2, 2003.
- Significant tunnel construction activity continues in New Jersey Avenue NW, along Constitution Ave. NW, along upper Northwest Drive and on the East Front Plaza.

East Front Plaza Work

- Site excavation continues throughout the project site. Approximately 300 truckloads (3,000 tons) of material is removed each day.
- Construction of the CVC foundation walls is complete on the Senate side of the site and is nearing completion on the House side near the face of the building. In all, approximately 2,200 linear feet of perimeter wall has been constructed.

House Side

- Crews continue construction of a CVC tunnel connector to the existing Cannon Tunnel near the House Steps and Carriageway. The Carriageway Door, the House Door and the House Steps will remain accessible at all times. At the completion of the tunnel work, which is expected in two months, the drive loop will revert to its previous alignment adjacent to the House Carriageway.

Senate Side (Outside the Main Construction Fence)

Tunnel Construction:

- CVC tunnel construction work continues on the East Front Plaza adjacent to and within the Senate triangular parking area.
- Excavation work related to the CVC service tunnel continues in Constitution Avenue NW just east of the intersection of New Jersey Avenue NW. The tunnel work in this zone will continue for several months.
- CVC tunnel construction work continues along the east side of New Jersey Avenue NW between Constitution Avenue and C Street. The east sidewalk in this location will continue to be closed, but the west sidewalk is accessible. The street will continue to be restricted to one lane and one way traffic traveling southbound.
- The North Door, the Senate Steps and the Senate Carriageway Door remain accessible to pedestrians throughout construction.

Senate-Side Utility Work:

- Second Street NE, between D Street NE and Massachusetts Avenue NE, is closed to allow for addition utility work to be completed in this zone. This portion of Second Street will remain closed until repaving activities are completed next week.
- Utility work along Second Street NE between Massachusetts Avenue NE and D Street NE is complete and repaving activities have begun. Traffic flow will be rerouted slightly around the paving zones.

Next Week – Anticipated Work – 4/21/03 through 4/25/03

East Front Plaza Work

- Excavation will continue on both the Senate and House sides of the CVC construction site. Some large equipment will continue to be situated close to the east face of the Capitol building on the House side.

House Side (Outside the Construction Fence)

- Crews will continue construction of a CVC connector tunnel to the existing Cannon Tunnel near the House Steps. The Carriageway Door, the House Door and the House Steps will remain accessible at all times.

Senate Side (Outside the Construction Fence)

- CVC tunnel work will continue in a portion of the East Front Plaza on the Senate side, Northwest Drive, along New Jersey Avenue NW, and in Constitution Avenue NW, just east of New Jersey Avenue NW.
- Paving activities will be completed along D Street between Louisiana Avenue NW and Second Street NE, and on Second Street NE between D Street NE and Massachusetts Avenue NE.

*- If you have any questions about the Capitol Visitor Center Project, please contact **Tom Fontana**, CVC Project Communications Officer for the Architect of the Capitol, at **(202) 228-1310**, or by e-mail at: tfontana@aac.gov. You can read this document and previous editions on our web site at www.aoc.gov.*

- If you experience any problems to building services inside the Capitol, please contact the Capitol Building Service Center at (202) 228-8800.



United States Capitol Visitor Center Weekly Construction Summary



Prepared by the Capitol Visitor Center Project Office, Architect of the Capitol, April 28, 2003

This Week – Ongoing Work – 4/28/03 through 5/02/03

- Paving related to CVC utility work has been completed:
 - at the intersection of New Jersey Avenue NW and Louisiana Avenue NW;
 - along D Street NE between Delaware Avenue NE and First Street NE;
 - along Second Street NE, between Massachusetts Avenue NE and D Street NE.Normal traffic flow and pedestrian access have been restored to all areas where paving is complete.
- Paving activity at the intersection of First Street NE and D Street NE is expected to be completed at the end of this week. Portions of this paving zone will be plated after 4PM to allow for two lanes of traffic in each direction along First Street NE until the work is completed.
- Paving activities will be completed during the next Congressional recess along D Street NE, between Louisiana Avenue and Delaware Avenue NE. Currently, this zone is open to traffic in both directions and pedestrian access on both sides of D Street NE.
- Significant tunnel construction activity continues in New Jersey Avenue NW, along Constitution Ave. NW, along upper Northwest Drive and on the East Front Plaza.

East Front Plaza Work

- Site excavation continues throughout the project site. Approximately 300 truckloads (3,000 tons) of material is removed each day.
- Construction of the CVC foundation walls is complete on the Senate side of the site and is nearing completion on the House side near the face of the building. In all, approximately 2,200 linear feet of perimeter wall has been constructed.
- Installation of tie-backs (a group of long steel rods) continues on the Senate side. The tie-backs, which can measure up to 110 feet, are inserted through the perimeter walls and anchored into the surrounding terrain. The CVC's three levels of tiebacks will help offset the pressure that the surrounding terrain places on the perimeter walls.

House Side

- Crews continue construction of a CVC tunnel connector to the existing Cannon Tunnel near the House Steps and Carriageway. The Carriageway Door, the House Door and the House Steps will remain accessible at all times. At the completion of the tunnel work, which is expected in two months, the drive loop will revert to its previous alignment adjacent to the House Carriageway.

Senate Side (Outside the Main Construction Fence)

Tunnel Construction:

- CVC tunnel construction work continues on the East Front Plaza adjacent to and within the Senate triangular parking area.
- Excavation work related to the CVC service tunnel continues in Constitution Avenue NW just east of the intersection of New Jersey Avenue NW. The tunnel work in this zone will continue for several months.

- CVC tunnel construction work continues along the east side of New Jersey Avenue NW between Constitution Avenue and C Street. The east sidewalk in this location will continue to be closed, but the west sidewalk is accessible. The street will continue to be restricted to one lane and one way traffic traveling southbound.
- The North Door, the Senate Steps and the Senate Carriageway Door remain accessible to pedestrians throughout construction.

Senate-Side Utility-Related Work:

- Paving has been completed:
 - at the intersection of New Jersey Avenue NW and Louisiana Avenue NW;
 - along D Street NE between Delaware Avenue NE and First Street NE;
 - along Second Street NE, between Massachusetts Avenue NE and D Street NE.
 Normal traffic flow and pedestrian access have been restored to all areas where paving is complete.
- Paving activity at the intersection of First Street NE and D Street NE is expected to be completed at the end of this week. Portions of the paving zone are plated after 4PM to allow for two lanes of traffic in each direction along First Street NE until the work is completed.
- Paving activities will be completed during the next Congressional recess along D Street NE, between Louisiana Avenue and Delaware Avenue NE. This zone is open to traffic in both directions and pedestrian access on both sides of D Street NE.

Next Week – Anticipated Work – 5/05/03 through 5/09/03

East Front Plaza Work

- Excavation will continue on both the Senate and House sides of the CVC construction site. Some large equipment will continue to be situated close to the east face of the Capitol building on the House side.

House Side (Outside the Construction Fence)

- Crews will continue construction of a CVC connector tunnel to the existing Cannon Tunnel near the House Steps. The Carriageway Door, the House Door and the House Steps will remain accessible at all times.

Senate Side (Outside the Construction Fence)

- CVC tunnel work will continue in a portion of the East Front Plaza on the Senate side, Northwest Drive, along New Jersey Avenue NW, and in Constitution Avenue NW, just east of New Jersey Avenue NW.
- Remaining paving activity along D Street between Louisiana Avenue and Delaware Avenue NE will be completed during the next Congressional recess.

*- If you have any questions about the Capitol Visitor Center Project, please contact **Tom Fontana**, CVC Project Communications Officer for the Architect of the Capitol, at **(202) 228-1310**, or by e-mail at: tfontana@aoc.gov. You can read this document and previous editions on our web site at www.aoc.gov.*

- If you experience any problems to building services inside the Capitol, please contact the Capitol Building Service Center at (202) 228-8800.



United States Capitol Visitor Center

Weekly Construction Summary



Prepared by the Capitol Visitor Center Project Office, Architect of the Capitol, May 5, 2003

This Week – Ongoing Work – 5/05/03 through 5/09/03

- No significant new activities are expected to occur this week.
- The remaining perimeter wall panels being constructed near the face of the building on the House side are expected to be completed by the end of this week.

East Front Plaza Work

- Site excavation continues throughout the project site. Approximately 300 truckloads (3,000 tons) of material is removed each day.
- Construction of the CVC foundation walls is complete on the Senate side of the site and is nearing completion on the House side near the face of the building. In all, approximately 2,200 linear feet of perimeter wall has been constructed.
- Installation of tie-backs (a group of long steel rods) continues throughout the site. The tie-backs, which can measure up to 110 feet, are inserted through the perimeter walls and anchored into the surrounding terrain.

House Side

- Crews continue construction of a CVC tunnel connector to the existing Cannon Tunnel near the House Steps and Carriageway. The Carriageway Door, the House Door and the House Steps will remain accessible at all times. At the completion of the tunnel work, which is expected in less than two months, the drive loop will be moved to its previous alignment adjacent to the House Carriageway.

Senate Side (Outside the Main Construction Fence)

Tunnel Construction:

- CVC tunnel construction work continues on the East Front Plaza adjacent to and within the Senate triangular parking area.
- Excavation work related to the CVC service tunnel continues in Constitution Avenue NW just east of the intersection of New Jersey Avenue NW. The tunnel work in this zone will continue for several months.
- CVC tunnel construction work continues along the east side of New Jersey Avenue NW between Constitution Avenue and C Street. The east sidewalk in this location will continue to be closed, but the west sidewalk is accessible. The street will continue to be restricted to one lane and one way traffic traveling southbound.
- The North Door, the Senate Steps and the Senate Carriageway Door remain accessible to pedestrians throughout construction.

Senate-Side Utility-Related Work:

- Paving activities to restore sidewalks along D Street NE continues at the intersections of Delaware Avenue NE and First and Second Streets NE. Normal traffic flow has resumed in these zones.
- Paving activities will be completed during the next congressional recess (week of May 26, 2003) along D

Street NE, between Louisiana Avenue and Delaware Avenue NE.

Next Week – Anticipated Work – 5/12/03 through 5/16/03

East Front Plaza Work

- Excavation and installation of tie-backs will continue on both the Senate and House sides of the CVC construction site.

House Side (Outside the Construction Fence)

- Crews will continue construction of a CVC connector tunnel to the existing Cannon Tunnel near the House Steps. The Carriageway Door, the House Door and the House Steps will remain accessible at all times.

Senate Side (Outside the Construction Fence)

- CVC tunnel work will continue in a portion of the East Front Plaza on the Senate side, Northwest Drive, along New Jersey Avenue NW, and in Constitution Avenue NW, just east of New Jersey Avenue NW.

*- If you have any questions about the Capitol Visitor Center Project, please contact **Tom Fontana**, CVC Project Communications Officer for the Architect of the Capitol, at (202) 228-1310, or by e-mail at: tfontana@aac.gov. You can read this document and previous editions on our web site at www.aoc.gov.*

- If you experience any problems to building services inside the Capitol, please contact the Capitol Building Service Center at (202) 228-8800.



United States Capitol Visitor Center Weekly Construction Summary



Prepared by the Capitol Visitor Center Project Office, Architect of the Capitol, May 12, 2003

This Week – Ongoing Work – 5/12/03 through 5/16/03

- No significant new activities are expected to occur this week.
- The remaining perimeter wall panels being constructed near the face of the building on the House side are expected to be completed by the end of this week.
- The tall blue concrete storage tower within the tunnel construction zone on the north side of the Capitol has been removed. One of the two large cranes also within the tunnel construction zone is being disassembled this week and will be removed by early next week.

East Front Plaza Work

- Site excavation continues throughout the project site. Approximately 300 truckloads (3,000 tons) of material is removed each day.
- Construction of the CVC foundation walls is complete on the Senate side of the site and is nearing completion on the House side near the face of the building. In all, approximately 2,200 linear feet of perimeter wall has been constructed.
- Installation of tie-backs (a group of long steel rods) continues throughout the site. The tie-backs, which can measure up to 110 feet, are inserted through the perimeter walls and anchored into the surrounding terrain.

House Side

- Crews continue construction of a CVC tunnel connector to the existing Cannon Tunnel near the House Steps and Carriageway. The Carriageway Door, the House Door and the House Steps will remain accessible at all times. At the completion of the tunnel work, which is expected in less than two months, the drive loop will be moved to its previous alignment adjacent to the House Carriageway.

Senate Side (Outside the Main Construction Fence)

Tunnel Construction:

- CVC tunnel construction work continues on the East Front Plaza adjacent to and within the Senate triangular parking area.
- Excavation work related to the CVC service tunnel continues in Constitution Avenue NW just east of the intersection of New Jersey Avenue NW. The tunnel work in this zone will continue for several months.
- CVC tunnel construction work continues along the east side of New Jersey Avenue NW between Constitution Avenue and C Street.
- The North Door, the Senate Steps and the Senate Carriageway Door remain accessible to pedestrians throughout construction.

Senate-Side Utility-Related Work:

- Paving activities to restore sidewalks along D Street NE continues at the intersections of First and Second Streets NE. Normal traffic flow has resumed in these zones.
- Paving activities will be completed during the next congressional recess (week of May 26, 2003) along D Street NE, between Louisiana Avenue and Delaware Avenue NE.

Next Week – Anticipated Work – 5/19/03 through 5/23/03

East Front Plaza Work

- Excavation and installation of tie-backs will continue on both the Senate and House sides of the CVC construction site.

House Side (Outside the Construction Fence)

- Crews will continue construction of a CVC connector tunnel to the existing Cannon Tunnel near the House Steps. The Carriageway Door, the House Door and the House Steps will remain accessible at all times.

Senate Side (Outside the Construction Fence)

- CVC tunnel work will continue in a portion of the East Front Plaza on the Senate side, Northwest Drive, along New Jersey Avenue NW, and in Constitution Avenue NW, just east of New Jersey Avenue NW.

*- If you have any questions about the Capitol Visitor Center Project, please contact **Tom Fontana**, CVC Project Communications Officer for the Architect of the Capitol, at **(202) 228-1310**, or by e-mail at: tfontana@auc.gov. You can read this document and previous editions on our web site at www.aoc.gov.*

- If you experience any problems to building services inside the Capitol, please contact the Capitol Building Service Center at (202) 228-8800.



United States Capitol Visitor Center

Weekly Construction Summary



Prepared by the Capitol Visitor Center Project Office, Architect of the Capitol, May 19, 2003

This Week – Ongoing Work – 5/19/03 through 5/23/03

- **The perimeter wall (2,080 linear feet) of the CVC is now complete. Deep excavation is proceeding rapidly to a depth of 50 ft. along the face of the Capitol and crews are expected to begin erecting the first of 130 steel columns this July. More than 400 truckloads of material is now being removed from the site each day.**
- **Additional truck traffic may occur during the upcoming recess at the South Barricade Entrance. The trucks will bring cement that will be used for construction of the walls and roof of the connector tunnel between the CVC and the Cannon Tunnel.**

East Front Plaza Work

- Site excavation continues throughout the project site. Approximately 400 truckloads of material is removed each day.
- Installation of tie-backs (a group of long steel rods) continues throughout the site. The tie-backs, which can measure up to 110 feet, are inserted through the perimeter walls and anchored into the surrounding terrain.

House Side

- Crews continue construction of a CVC tunnel connector to the existing Cannon Tunnel near the House Steps and Carriageway. Cement trucks will be arriving to the site to pour concrete for the tunnel walls and roof. This increase in truck traffic is scheduled to occur during the upcoming recess. The Carriageway Door, the House Door and the House Steps will remain accessible at all times. At the completion of the tunnel work, which is expected in June, the drive loop will be moved to its previous alignment adjacent to the House Carriageway.

Senate Side (Outside the Main Construction Fence)

Tunnel Construction:

- CVC tunnel construction work continues on the East Front Plaza adjacent to and within the Senate triangular parking area.
- Excavation work related to the CVC service tunnel continues in Constitution Avenue NW just east of the intersection of New Jersey Avenue NW. The tunnel work in this zone will continue for several months.
- CVC tunnel construction work continues along the east side of New Jersey Avenue NW between Constitution Avenue and C Street.

Senate-Side Utility-Related Work:

- Paving activity to restore sidewalks along D Street NE continues at the intersections of First Street NE.
- Weather permitting, paving activities will be completed next week along D Street NE, between Louisiana Avenue and Delaware Avenue NE. Parking restrictions will be in effect along both sides of D Street NE within the work zone. The Senate Parking Office has coordinated alternate parking arrangements for staffers affected by this work.

Next Week – Anticipated Work – 5/26/03 through 5/30/03

East Front Plaza Work

- Excavation and installation of tie-backs will continue on both the Senate and House sides of the CVC construction site.

House Side (Outside the Construction Fence)

- Crews will continue construction of a CVC connector tunnel to the existing Cannon Tunnel near the House Steps. The Carriageway Door, the House Door and the House Steps will remain accessible at all times.

Senate Side (Outside the Construction Fence)

- CVC tunnel work will continue in a portion of the East Front Plaza on the Senate side, Northwest Drive, along New Jersey Avenue NW, and in Constitution Avenue NW, just east of New Jersey Avenue NW.

Senate-Side Utility-Related Work:

- Weather permitting, paving activities be performed along D Street NE, between Louisiana Avenue and Delaware Avenue NE between Tuesday, May 27 and Saturday, May 28, 2003. Parking restrictions will be in effect along both sides of D Street NE within the work zone. The Senate Parking Office has coordinated alternate parking arrangements for staffers affected by this work.

*- If you have any questions about the Capitol Visitor Center Project, please contact **Tom Fontana**, CVC Project Communications Officer for the Architect of the Capitol, at (202) 228-1310, or by e-mail at: tfontana@aac.gov. You can read this document and previous editions on our web site at www.aoc.gov.*

- If you experience any problems to building services inside the Capitol, please contact the Capitol Building Service Center at (202) 228-8800.



United States Capitol Visitor Center Weekly Construction Summary



Prepared by the Capitol Visitor Center Project Office, Architect of the Capitol, May 27, 2003

This Week – Ongoing Work – 5/26/03 through 5/30/03

- **The perimeter wall (2,080 linear feet) of the CVC is now complete. Deep excavation is proceeding rapidly to a depth of 50 ft. along the face of the Capitol and crews are expected to begin erecting the first of 130 steel columns this July. More than 400 truckloads of material is now being removed from the site each day.**
- **Additional truck traffic may occur this week at the South Barricade Entrance. The trucks will bring concrete that will be used for construction of the walls and roof of the connector tunnel between the CVC and the Cannon Tunnel.**
- **Deep excavation of the truck tunnel on the north side of the Capitol is progressing along Upper Northwest Drive.**

East Front Plaza Work

- Site excavation continues throughout the project site. Approximately 400 truckloads of material is removed each day.
- Installation of tie-backs (a group of long steel rods) continues throughout the site. The tie-backs, which can measure up to 110 feet, are inserted through the perimeter walls and anchored into the surrounding terrain.

House Side

- Crews continue construction of a CVC tunnel connector to the existing Cannon Tunnel near the House Steps and Carriageway. Cement trucks will be arriving to the site to pour concrete for the tunnel walls and roof. This increase in truck traffic is scheduled to occur during the upcoming recess. The Carriageway Door, the House Door and the House Steps will remain accessible at all times. At the completion of the tunnel work, which is expected in June, the drive loop will be moved to its previous alignment adjacent to the House Carriageway.

Senate Side (Outside the Main Construction Fence)

Tunnel Construction:

- CVC tunnel construction work continues on the East Front Plaza adjacent to and within the Senate triangular parking area.
- Excavation work related to the CVC service tunnel continues in Constitution Avenue NW just east of the intersection of New Jersey Avenue NW. The tunnel work in this zone will continue for several months.
- CVC tunnel construction work continues along the east side of New Jersey Avenue NW between Constitution Avenue and C Street.

Senate-Side Utility-Related Work:

- Weather permitting, paving activities will be completed this week along D Street NE, between Louisiana Avenue and Delaware Avenue NE. Parking restrictions will be in effect along both sides of D Street NE within the work zone between Tuesday, May 27 and Saturday, May 31, 2003.

Next Week – Anticipated Work – 6/02/03 through 6/06/03

East Front Plaza Work

- Excavation and installation of tie-backs will continue on both the Senate and House sides of the CVC construction site.

House Side (Outside the Construction Fence)

- Crews will continue construction of a CVC connector tunnel to the existing Cannon Tunnel near the House Steps. The Carriageway Door, the House Door and the House Steps will remain accessible at all times.

Senate Side (Outside the Construction Fence)

- CVC tunnel work will continue in a portion of the East Front Plaza on the Senate side, along Upper Northwest Drive, along New Jersey Avenue NW, and in Constitution Avenue NW, just east of New Jersey Avenue NW.

*- If you have any questions about the Capitol Visitor Center Project, please contact **Tom Fontana**, CVC Project Communications Officer for the Architect of the Capitol, at **(202) 228-1310**, or by e-mail at: tfontana@auc.gov. You can read this document and previous editions on our web site at www.aoc.gov.*

- If you experience any problems to building services inside the Capitol, please contact the Capitol Building Service Center at (202) 228-8800.



United States Capitol Visitor Center Weekly Construction Summary



Prepared by the Capitol Visitor Center Project Office, Architect of the Capitol, June 2, 2003

This Week – Ongoing Work – 6/02/03 through 6/06/03

- Paving activities have been completed along D Street NE between Louisiana Avenue and Second Street. Some remaining landscaping activities will be completed this week, but all parking spaces and sidewalks have been restored and are now available.
- The concrete roof slab of the connector tunnel between the CVC and the Cannon Tunnel was placed this past weekend.
- Deep excavation of the truck tunnel on the north side of the Capitol is progressing along Upper Northwest Drive.
- The perimeter wall (2,080 linear feet) of the CVC is now complete. Deep excavation is proceeding rapidly to a depth of 50 ft. along the face of the Capitol and crews are expected to begin erecting the first of 130 steel columns this July. More than 400 truckloads of material is now being removed from the site each day.

East Front Plaza Work

- Site excavation continues throughout the project site. Approximately 400 truckloads of material is removed each day.
- Installation of tie-backs (a group of long steel rods) continues throughout the site. The tie-backs, which can measure up to 110 feet, are inserted through the perimeter walls and anchored into the surrounding terrain.

House Side

- Crews continue construction of a CVC tunnel connector to the existing Cannon Tunnel near the House Steps and Carriageway. This past weekend, crews placed the concrete for the tunnel walls and roof. At the completion of the tunnel work the drive loop will be moved to its previous alignment adjacent to the House Carriageway.

Senate Side (Outside the Main Construction Fence)

Tunnel Construction:

- CVC tunnel construction work continues on the East Front Plaza adjacent to and within the Senate triangular parking area.
- Excavation work related to the CVC service tunnel continues in Constitution Avenue NW just east of the intersection of New Jersey Avenue NW. The tunnel work in this zone will continue for several months.
- CVC tunnel construction work continues along the east side of New Jersey Avenue NW between Constitution Avenue and C Street.

Senate-Side Utility-Related Work:

- Paving activities were completed this week along D Street NE, between Louisiana Avenue and Delaware Avenue NE. All parking spaces have been restored.

Next Week – Anticipated Work – 6/09/03 through 6/13/03

East Front Plaza Work

- Excavation and installation of tie-backs will continue on both the Senate and House sides of the CVC construction site.

House Side (Outside the Construction Fence)

- Crews will continue construction of a CVC connector tunnel to the existing Cannon Tunnel near the House Steps. The Carriageway Door, the House Door and the House Steps will remain accessible at all times.

Senate Side (Outside the Construction Fence)

- CVC tunnel work will continue in a portion of the East Front Plaza on the Senate side, along Upper Northwest Drive, along New Jersey Avenue NW, and in Constitution Avenue NW, just east of New Jersey Avenue NW.

*- If you have any questions about the Capitol Visitor Center Project, please contact **Tom Fontana**, CVC Project Communications Officer for the Architect of the Capitol, at **(202) 228-1310**, or by e-mail at: tfontana@auc.gov. You can read this document and previous editions on our web site at www.aoc.gov.*

- If you experience any problems to building services inside the Capitol, please contact the Capitol Building Service Center at (202) 228-8800.



United States Capitol Visitor Center Weekly Construction Summary



Prepared by the Capitol Visitor Center Project Office, Architect of the Capitol, June 9, 2003

This Week – Ongoing Work – 6/09/03 through 6/13/03

Highlights:

- **The perimeter wall (2,080 linear feet) of the CVC is now complete. Deep excavation is proceeding rapidly to a depth of 50 ft. along the face of the Capitol and crews are expected to begin erecting the first of 130 steel columns this July. More than 500 truckloads of material are now being removed from the site each day. Portions of the CVC roof deck structure on the House side may be in place as early as this September.**

East Front Plaza Work

- Site excavation continues throughout the project site.
- Installation of tie-backs (a group of long steel rods) continues throughout the site. The tie-backs, which can measure up to 110 feet, are inserted through the perimeter walls and anchored into the surrounding terrain.

House Side

- Crews continue construction of a CVC tunnel connector to the existing Cannon Tunnel near the House Steps and Carriageway. At the completion of the tunnel work, expected early this July, the drive loop will be moved to its previous alignment adjacent to the House Carriageway.

Senate Side (Outside the Main Construction Fence)

Tunnel Construction:

- CVC tunnel construction work continues on the East Front Plaza adjacent to and within the Senate triangular parking area, along Constitution Avenue NW just east of the intersection of New Jersey Avenue NW, and along the east side of New Jersey Avenue NW between Constitution Avenue and C Street NW.

Senate-Side Utility-Related Work:

- Paving activities along D Street NE have been completed

Next Week – Anticipated Work – 6/16/03 through 6/20/03

East Front Plaza Work

- Excavation and installation of tie-backs will continue on both the Senate and House sides of the CVC construction site.

House Side (Outside the Construction Fence)

- Crews will continue construction of a CVC connector tunnel to the existing Cannon Tunnel near the House Steps. The Carriageway Door, the House Door and the House Steps will remain accessible at all times.

Senate Side (Outside the Construction Fence)

- CVC tunnel work will continue in a portion of the East Front Plaza on the Senate side, along Upper Northwest Drive, along New Jersey Avenue NW, and in Constitution Avenue NW, just east of New Jersey Avenue NW.

*- If you have any questions about the Capitol Visitor Center Project, please contact **Tom Fontana**, CVC Project Communications Officer for the Architect of the Capitol, at **(202) 228-1310**, or by e-mail at: **tfontana@aoc.gov**. You can read this document and previous editions on our web site at www.aoc.gov.*

- If you experience any problems to building services inside the Capitol, please contact the Capitol Building Service Center at (202) 228-8800.



United States Capitol Visitor Center Weekly Construction Summary



Prepared by the Capitol Visitor Center Project Office, Architect of the Capitol, June 16, 2003

This Week – Ongoing Work – 6/16/03 through 6/20/03

Highlights:

- **The perimeter wall (2,080 linear feet) of the CVC is now complete. Deep excavation is proceeding rapidly to a depth of 50 ft. on the House side and crews are expected to begin erecting the first of 132 steel columns this July. More than 500 truckloads of material are now being removed from the site each day. Portions of the CVC roof deck structure on the House side may be in place as early as this September.**



View from the East Front Rotunda Steps looking northeast

East Front Plaza Work

- Site excavation continues throughout the project site.
- Installation of tie-backs (a group of long steel rods) continues throughout the site. The tie-backs, which can measure up to 110 feet, are inserted through the perimeter walls and anchored into the surrounding terrain.

House Side

- Crews continue construction of a CVC tunnel connector to the existing Cannon Tunnel near the House Steps and Carriageway. At the completion of the tunnel work, expected this July, the drive loop will be moved to its previous alignment adjacent to the House Carriageway.

Senate Side (Outside the Main Construction Fence)

Tunnel Construction:

- CVC tunnel construction work continues on the East Front Plaza adjacent to and within the Senate triangular parking area, along Constitution Avenue NW just east of the intersection of New Jersey Avenue NW, and along the east side of New Jersey Avenue NW between Constitution Avenue and C Street NW.

Next Week – Anticipated Work – 6/23/03 through 6/27/03

East Front Plaza Work

- Excavation and installation of tie-backs will continue on both the Senate and House sides of the CVC construction site.

A back-hoe removes soil on the House side of the CVC site.



House Side (Outside the Construction Fence)

- Crews will continue construction of a CVC connector tunnel to the existing Cannon Tunnel near the House Steps. The Carriageway Door, the House Door and the House Steps will remain accessible at all times.

Senate Side (Outside the Construction Fence)

- CVC tunnel work will continue in a portion of the East Front Plaza on the Senate side, along Upper Northwest Drive, along New Jersey Avenue NW, and in Constitution Avenue NW, just east of New Jersey Avenue NW.

*- If you have any questions about the Capitol Visitor Center Project, please contact **Tom Fontana**, CVC Project Communications Officer for the Architect of the Capitol, at **(202) 228-1310**, or by e-mail at: tfontana@aac.gov. You can read this document and previous editions on our web site at www.aoc.gov.*

- If you experience any problems to building services inside the Capitol, please contact the Capitol Building Service Center at (202) 228-8800.



United States Capitol Visitor Center Weekly Construction Summary



Prepared by the Capitol Visitor Center Project Office, Architect of the Capitol, June 23, 2003

This Week – Ongoing Work – 6/23/03 through 6/27/03



Highlights:

- The perimeter wall (2,080 linear feet) of the CVC is now complete. Deep excavation is proceeding rapidly to a depth of 50 ft. on the House side and crews are expected to begin erecting the first of 132 steel columns in August. More than 500 truckloads of material are now being removed from the site each day. Portions of the CVC roof deck structure on the House side may be in place as early as this September.

East Front Plaza Work

- Site excavation continues throughout the project site.
- Installation of tie-backs (a group of long steel rods) continues throughout the site. The tie-backs, which can measure up to 110 feet, are inserted through the perimeter walls and anchored into the surrounding terrain.

Workers assemble a rebar cage in the northeast quadrant of the CVC site. The steel rods will serve as the skeleton of the wall that will line the north entrance ramp of the CVC.

House Side

- Crews continue construction of a CVC tunnel connector to the existing Cannon Tunnel near the House Steps and Carriageway. At the completion of the tunnel work, expected during the July 4 recess, the zone will be paved and the drive loop will be re-established adjacent to the House Carriageway.

The concrete roof slab of the tunnel connector between the CVC and the Cannon tunnel has been placed and waterproofed.



Senate Side (Outside the Main Construction Fence)

Tunnel Construction:

- CVC tunnel construction work continues on the East Front Plaza adjacent to and within the Senate triangular parking area, along Constitution Avenue NW just east of the intersection of New Jersey Avenue NW, and along the east side of New Jersey Avenue NW between Constitution Avenue and C Street NW.

Next Week – Anticipated Work – 6/30/03 through 7/04/03

East Front Plaza Work

- Excavation and installation of tie-backs will continue on both the Senate and House sides of the CVC construction site.

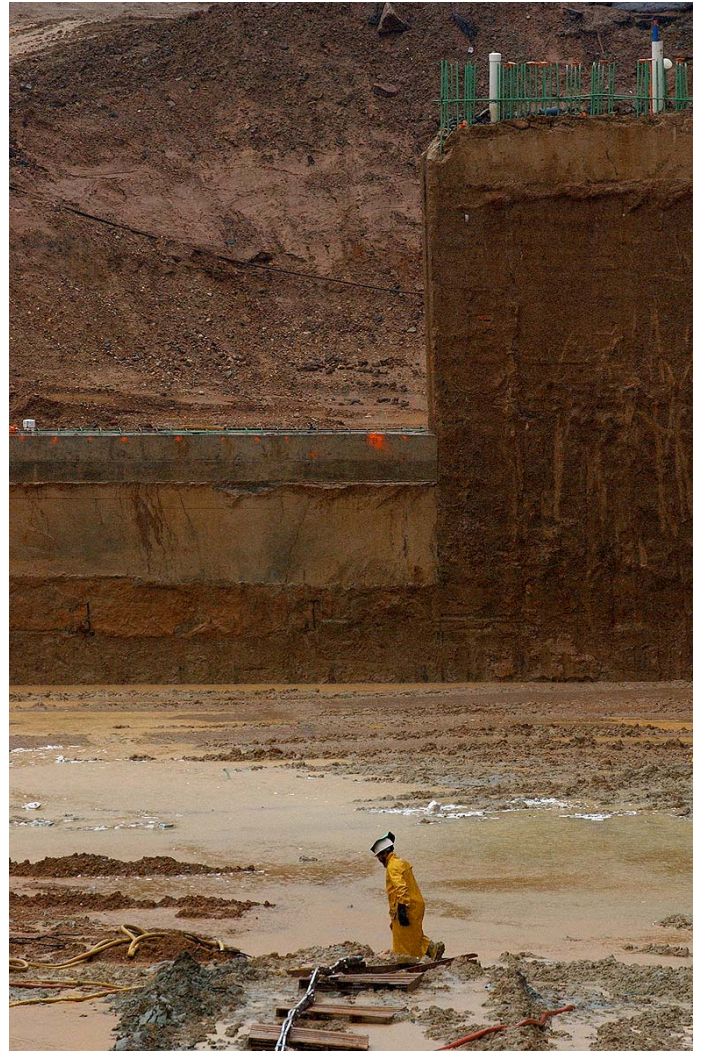
House Side (Outside the Construction Fence)

- Weather permitting, crews will pave the Plaza over the Cannon connector tunnel and the vehicle drive loop will be re-established near the House Carriageway. The Carriageway Door, the House Door and the House Steps will remain accessible at all times.

Senate Side (Outside the Construction Fence)

- CVC tunnel work will continue in a portion of the East Front Plaza on the Senate side, along Upper Northwest Drive, along New Jersey Avenue NW, and in Constitution Avenue NW, just east of New Jersey Avenue NW.

CV-Sea? A worker navigates through several inches of water in the center of the CVC site during a rainstorm last week. The persistent rains this spring have, at times, hampered excavation activities.



*- If you have any questions about the Capitol Visitor Center Project, please contact **Tom Fontana**, CVC Project Communications Officer for the Architect of the Capitol, at **(202) 228-1310**, or by e-mail at: tfontana@aoc.gov. You can read this document and previous editions on our web site at www.aoc.gov.*

- If you experience any problems to building services inside the Capitol, please contact the Capitol Building Service Center at (202) 228-8800.



United States Capitol Visitor Center Weekly Construction Summary



Prepared by the Capitol Visitor Center Project Office, Architect of the Capitol, June 30, 2003

This Week – Ongoing Work – 6/30/03 through 7/04/03

Highlights:

- Weather permitting, paving work above the tunnel connector between the CVC and the Cannon Tunnel will be completed next weekend and the drive loop will be reestablished adjacent to the House Carriageway early next week.
- The perimeter wall (2,080 linear feet) of the CVC is now complete. Deep excavation is proceeding rapidly to a depth of 50 ft. on the House side and crews are expected to begin erecting the first of 132 steel columns in August. More than 500 truckloads of material are being removed from the site each day. Portions of the CVC roof deck structure on the House side may be in place this October.

East Front Plaza Work

- Site excavation continues throughout the project site.
- Installation of tie-backs (a group of long steel rods) continues throughout the site. The tie-backs, which can measure up to 110 feet, are inserted through the perimeter walls and anchored into the surrounding terrain.

House Side

- Crews are expected to complete construction of the CVC tunnel connector to the existing Cannon Tunnel near the House Steps and Carriageway. Weather permitting, paving above the tunnel will occur next weekend, July 5-6, and the drive loop adjacent to the House Carriageway will be reestablished by the time Members return from recess.

Architect of the Capitol, Alan Hantman (left), met with members of the House Subcommittee on Appropriations during a CVC site visit last Tuesday, June 24. From right: Chairman Jack Kingston, Rep. Jim Moran and Rep. Ray LaHood heard Mr. Hantman discuss some of the unforeseen site conditions encountered during CVC project construction.



Senate Side (Outside the Main Construction Fence)

Tunnel Construction:

- CVC tunnel construction work continues on the East Front Plaza adjacent to and within the Senate triangular parking area, along Constitution Avenue NW just east of the intersection of New Jersey Avenue NW, and along the east side of New Jersey Avenue NW between Constitution Avenue and C Street NW.

Next Week – Anticipated Work – 7/07/03 through 7/11/03

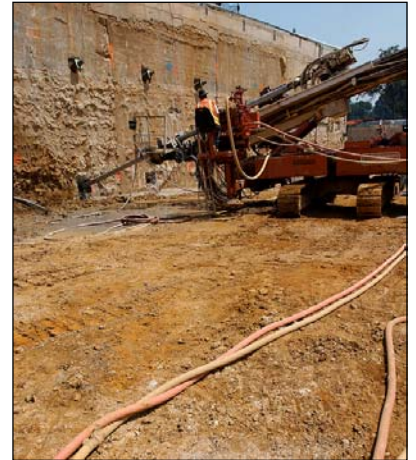
East Front Plaza Work

- Excavation and installation of tie-backs will continue on both the Senate and House sides of the CVC construction site.

House Side (Outside the Construction Fence)

Weather permitting, paving work above the tunnel connector between the CVC and the Cannon Tunnel will have been completed during the July 5-6 weekend and the drive loop will have been reestablished adjacent to the House Carriageway.

More than 500 tie-backs will be installed through the perimeter wall panels of the CVC. The tie-backs, which can measure up to 110 feet long, act as screws and serve to offset the pressure exerted on the walls by the weight of the surrounding terrain.



Senate Side (Outside the Construction Fence)

- CVC tunnel work will continue in a portion of the East Front Plaza on the Senate side, along Upper Northwest Drive, along New Jersey Avenue NW, and in Constitution Avenue NW, just east of New Jersey Avenue NW.



Directly below the East Front center steps, a CVC construction crew monitors the progress of a “jet-grouting” machine, which propels grout into the earth at extremely high pressure. After it hardens, the grout will provide the earth retention necessary to allow excavation to occur in this zone. The grout will be removed after excavation since the area below the East Front center steps serves as the primary transition zone between the CVC and the Capitol.

*- If you have any questions about the Capitol Visitor Center Project, please contact **Tom Fontana**, CVC Project Communications Officer for the Architect of the Capitol, at (202) 228-1310, or by e-mail at: tfontana@ao.gov. You can read this document and previous editions on our web site at www.aoc.gov.*

- If you experience any problems to building services inside the Capitol, please contact the Capitol Building Service Center at (202) 228-8800.



United States Capitol Visitor Center Weekly Construction Summary



Prepared by the Capitol Visitor Center Project Office, Architect of the Capitol, July 7, 2003

This Week – Ongoing Work – 7/07/03 through 7/11/03

- Paving work above the tunnel connector between the CVC and the Cannon Tunnel was completed during the July 4th weekend and the drive loop has been reestablished adjacent to the House Carriageway.
- The perimeter wall (2,080 linear feet) of the CVC is now complete. Deep excavation is proceeding rapidly to a depth of 50 ft. on the House side and crews are expected to begin erecting the first of 132 steel columns in August. More than 500 truckloads of material are being removed from the site each day (photo at right).



East Front Plaza Work

- Site excavation continues throughout the project site.
- Installation of tie-backs (a group of long steel rods) continues throughout the site. The tie-backs, which can measure up to 110 feet, are inserted through the perimeter walls and anchored into the surrounding terrain.



House Side

- Crews completed construction of the CVC tunnel connector to the existing Cannon Tunnel. The drive loop adjacent to the House Carriageway has been reestablished.

Excavation within the House side of the CVC project site continues. Most of the site has been excavated to a depth of 25 feet, about halfway to the final 50-foot depth of the CVC's lower-level floor slab. The concrete perimeter walls visible in this photo are already in the ground to a depth of 70 feet and are revealed as excavation continues. Tiebacks are installed after every 12 feet of excavation to secure the walls to the surrounding terrain.

Senate Side (Outside the Main Construction Fence)

Tunnel Construction:

- CVC tunnel construction work continues on the East Front Plaza adjacent to and within the Senate triangular parking area, along Constitution Avenue NW just east of the intersection of New Jersey Avenue NW, and along the east side of New Jersey Avenue NW between Constitution Avenue and C Street NW.

Next Week – Anticipated Work – 7/14/03 through 7/18/03

East Front Plaza Work

- Excavation and installation of tie-backs will continue on both the Senate and House sides of the CVC construction site.

House Side (Outside the Construction Fence)

No work expected.

Senate Side (Outside the CVC Construction Fence)

- CVC tunnel work will continue in a portion of the East Front Plaza on the Senate side, along Upper Northwest Drive, along New Jersey Avenue NW, and in Constitution Avenue NW, just east of New Jersey Avenue NW.

Close to 80 truckloads of material are being removed each day along the CVC service tunnel route on the north side of the Capitol. Close to 37,000 cubic yards of soil have been removed from the tunnel construction zone, about 80 percent of the 48,000 total yards to be excavated from this area.



- If you have any questions about the Capitol Visitor Center Project, please contact **Tom Fontana**, CVC Project Communications Officer for the Architect of the Capitol, at **(202) 228-1310**, or by e-mail at: tfontana@aoc.gov. You can read this document and previous editions on our web site at www.aoc.gov.

- If you experience any problems to building services inside the Capitol, please contact the Capitol Building Service Center at (202) 228-8800.



United States Capitol Visitor Center Weekly Construction Summary



Prepared by the Capitol Visitor Center Project Office, Architect of the Capitol, July 14, 2003

This Week – Ongoing Work – 7/14/03 through 7/18/03

- The perimeter wall (2,080 linear feet) of the CVC is complete. Deep excavation is proceeding rapidly to a depth of 50 feet on the House side and crews are expected to begin erecting the first of 132 steel columns in August. More than 500 truckloads of material are being removed from the site each day.

East Front Plaza Work

- Site excavation continues throughout the project site.
- Installation of tie-backs (groups of long steel rods) continues throughout the site. The tie-backs, which can measure up to 110 feet, are inserted through the perimeter walls and anchored into the surrounding terrain.

A crew secures a portion of formwork for the retaining wall that will line the north-side entrance ramp to the CVC. Concrete will be poured within the formwork and then the formwork will be removed once the concrete “cures.” Eventually, the wall will be lined with granite stones that will match the color and texture of the existing historic retaining walls on Capitol Square, which were designed in 1874 by Frederick Law Olmsted.



Senate Side (Outside the Main Construction Fence)

Tunnel Construction:

- CVC tunnel construction work continues on the East Front Plaza adjacent to and within the Senate triangular parking area, along Constitution Avenue NW just east of the intersection of New Jersey Avenue NW, and along the east side of New Jersey Avenue NW between Constitution Avenue and C Street NW.

Next Week – Anticipated Work – 7/21/03 through 7/25/03

East Front Plaza Work

- Excavation and installation of tie-backs will continue on both the Senate and House sides of the CVC construction site.

House Side (Outside the Construction Fence)

No work expected.

A worker directs water to clean and lubricate one of 494 tiebacks that are being installed into the CVC perimeter wall. The tiebacks, which can measure up to 110 feet long, act as screws that secure the perimeter wall to the surrounding terrain.



Senate Side (Outside the CVC Construction Fence)

- CVC tunnel work will continue in a portion of the East Front Plaza on the Senate side, along Upper Northwest Drive, along New Jersey Avenue NW, and in Constitution Avenue NW, just east of New Jersey Avenue NW.



Excavation is progressing along the perimeter wall on the House side. Close to 247,000 cubic yards of material have been removed from the project site thus far, which translates to approximately 24,700 truckloads.

*- If you have any questions about the Capitol Visitor Center Project, please contact **Tom Fontana**, CVC Project Communications Officer for the Architect of the Capitol, at (202) 228-1310, or by e-mail at: tfontana@aac.gov. You can read this document and previous editions on our web site at www.aoc.gov.*

- If you experience any problems to building services inside the Capitol, please contact the Capitol Building Service Center at (202) 228-8800.



United States Capitol Visitor Center Weekly Construction Summary



Prepared by the Capitol Visitor Center Project Office, Architect of the Capitol, July 21, 2003

This Week – Ongoing Work – 7/21/03 through 7/25/03

- The perimeter wall (2,080 linear feet) of the CVC is complete. Deep excavation is proceeding rapidly to a depth of 50 feet on the House side and crews are expected to begin erecting the first of 132 steel columns in August. More than 500 truckloads of material are being removed from the site each day.

East Front Plaza Work

- Site excavation continues throughout the project site. Crews have reached a depth of 40 feet in some locations on the House side.
- Installation of tie-backs (groups of long steel rods) continues throughout the site. The tie-backs, which can measure up to 110 feet, are inserted through the perimeter walls and anchored into the surrounding terrain. **Crews have begun installing the third and last level of tie-backs on the House side of the site.** The CVC floor slab will be constructed at the 50 foot level, approximately 9 feet below the last row of tie-backs.

Right: Excavation of the truck tunnel is progressing on the north side of the Capitol. The tunnel and its entrance ramp have a combined length of approximately 1,000 feet and require excavation of 70,000 cubic yards. Close to 50,000 cubic yards have been excavated thus far.



East Front Extension (Inside the Capitol)

- Demolition of architectural and structural elements will begin in the basement and sub-basement within the East Front Extension. The work will clear the way for the transition zone between the CVC and the Capitol, which will include escalators, stairwells and two 25-passenger elevators.



Senate Side (Outside the Main Construction Fence)

Tunnel Construction:

- CVC tunnel construction work continues on the East Front Plaza adjacent to and within the Senate triangular parking area, along Constitution Avenue NW just east of the intersection of New Jersey Avenue NW, and along the east side of New Jersey Avenue NW between Constitution Avenue and C Street NW.

A crew installs a tie-back as part of an earth retention system that will clear the way for construction of the concrete walls of the truck tunnel.

Next Week – Anticipated Work – 7/28/03 through 8/01/03

East Front Plaza Work

- Excavation and installation of tie-backs will continue on both the Senate and House sides of the CVC construction site.

East Front (Inside the Capitol Building)

- Demolition of architectural and structural elements will continue in the basement and sub-basement within the East Front Extension.

More than 30 feet below ground, a bulldozer moves soil in the excavated trench of the new truck tunnel.



House Side (Outside the Construction Fence)

No work expected.

Senate Side (Outside the CVC Construction Fence)

- CVC tunnel work will continue in a portion of the East Front Plaza on the Senate side, along Upper Northwest Drive, along New Jersey Avenue NW, and in Constitution Avenue NW, just east of New Jersey Avenue NW.



On the north side of the Capitol, a crew installs a waterproofing membrane inside the earth retention walls that line the route of the new truck tunnel.

When it becomes fully operational in late 2005, the truck tunnel will connect to 8 new loading docks in the lower (service) level of the Capitol Visitor Center. The tunnel will provide a secure, and virtually invisible, means by which all truck loading, delivery and garbage removal activities will occur at the Capitol.

*If you have any questions about the Capitol Visitor Center Project, please contact **Tom Fontana**, CVC Project Communications Officer for the Architect of the Capitol, at (202) 228-1310, or by e-mail at: tfontana@aoc.gov. You can read this document and previous editions on our web site at www.aoc.gov.*

- If you experience any problems to building services inside the Capitol, please contact the Capitol Building Service Center at (202) 228-8800.



United States Capitol Visitor Center Weekly Construction Summary



Prepared by the Capitol Visitor Center Project Office, Architect of the Capitol, August 4, 2003



Excavation continues in the east-central portion of the CVC site to clear the way for the Congressional Auditorium. Much of the CVC site adjacent to the perimeter walls is down to its base depth of 50 feet. Some elevated paths need to be maintained for truck traffic.

This Week – Ongoing Work – 8/04/03 through 8/08/03

Highlights:

- Excavation has reached its base depth of 50 feet in the southwest corner of the project site and utility installation has begun at this location.
- A crew has poured a test “caisson,” which is a 4-foot-diameter, 20-foot-deep concrete footing. More than 160 caissons will be poured to support all of the steel and concrete columns that will be erected on the site. Crews are expected to begin erecting the first of 132 50-foot-high steel columns at the end of August.
- More than 500 truckloads of material continue to be removed from the site each day and the perimeter slurry wall (2,080 linear feet) of the CVC is complete.

East Front Plaza Work

- Site excavation continues throughout the project site. Crews have reached a depth of 50 feet at several locations on both sides of the site and utility installation has begun in the southwest quadrant of the site.
- A crew has installed a test “caisson” (see “Highlights” above for description) and 35 more caissons will be poured during the next few weeks in anticipation of the arrival of steel columns at the end of the month.

- The first of 132 steel columns is expected to be erected near the end of the month. Horizontal roof beams will be connected as the vertical columns are erected, so a portion of the roof structure of the CVC will begin to take shape as early as September.
- Installation of tie-backs continues throughout the site. The tie-backs, which can measure up to 110 feet, are inserted through the perimeter walls and anchored into the surrounding terrain. Close to 85 percent of 494 tie-backs have been installed.
- The earth retention wall around the Congressional Auditorium has been completed and excavation continues at this location.



East Front Extension (Inside the Capitol)

- Demolition of architectural and structural elements continues in the basement and sub-basement within the East Front Extension. The work will clear the way for the transition zone between the CVC and the Capitol, which will include escalators, stairwells and two 25-passenger elevators.

At right: Spiderman? No, just a construction worker tying together steel rods that will form the skeleton of a caisson, which is a concrete base that will support each of the steel columns to be erected on the site. The steel cage will be lifted vertically and lowered into a pre-dug 20-foot-deep cylindrical trench.

Senate Side (Outside the Main Construction Fence)

Truck Tunnel Construction:

- CVC truck tunnel construction work continues on the East Front Plaza adjacent to and within the Senate triangular parking area, along Constitution Avenue NW just east of the intersection of New Jersey Avenue NW, and along the east side of New Jersey Avenue NW between Constitution Avenue and C Street NW.

Next Week – Anticipated Work – 8/11/03 through 8/15/03

East Front Plaza Work

- Excavation and installation of tie-backs will continue throughout the CVC construction site. Installation of utilities and caissons will continue in the southwest quadrant of the site.



East Front (Inside the Capitol Building)

- Demolition of architectural and structural elements will continue in the basement and sub-basement within the East Front Extension.

Senate Side (Outside the CVC Construction Fence)

- CVC truck tunnel work will continue in a portion of the East Front Plaza on the Senate side, along Upper Northwest Drive, along New Jersey Avenue NW, and in Constitution Avenue NW, just east of New Jersey Avenue NW.

Left: A crew installs a tieback through one of the steel support columns that help hold back earth around the area to be occupied by the Congressional Auditorium

- If you have any questions about the Capitol Visitor Center Project, please contact **Tom Fontana**, CVC Project Communications Officer for the Architect of the Capitol, at (202) 228-1310, or by e-mail at: tfontana@ao.gov. You can read this document and previous editions on our web site at www.aoc.gov.



United States Capitol Visitor Center Weekly Construction Summary



Prepared by the Capitol Visitor Center Project Office, Architect of the Capitol, August 11, 2003



Excavation (above) and installation of tiebacks (inset) continue to be the dominant activities on the CVC project site. (Photos from 8/8/03)

This Week – Ongoing Work – 8/11/03 through 8/15/03

Highlights:

- Excavation has reached its base depth of 50 feet in the southwest corner of the project site and utility installation continues at this location.
- Crews will begin installing concrete footings (caissons) in the southwest corner of the site at the end of the week. In all, approximately 165 caissons will be poured to support all of the steel and concrete columns that will be erected on the site. Crews are expected to begin erecting the first of 132 50-foot-high steel columns at the end of August.

East Front Plaza Work

- Site excavation and installation of the third row of tiebacks continues throughout the project site. A fourth row of tiebacks is being installed in some wall panels that are adjacent to the Capitol foundation..
- The first of 132 steel columns is expected to be erected near the end of the month. Horizontal roof beams will be connected as the vertical columns are erected, so a portion of the roof structure of the CVC will begin to take shape as early as September.

- Installation of tie-backs continues throughout the site. The tie-backs, which can measure up to 110 feet, are inserted through the perimeter walls and anchored into the surrounding terrain. Approximately 85 percent of 494 tie-backs have been installed.
- The earth retention wall around the Congressional Auditorium has been completed and excavation continues at this location.

East Front Extension (Inside the Capitol)

- Demolition of architectural and structural elements continues in the basement and sub-basement within the East Front Extension. The work will clear the way for the transition zone between the CVC and the Capitol, which will include escalators, stairwells and two 25-passenger elevators.

Senate Side (Outside the Main Construction Fence)

Truck Tunnel Construction:

- CVC truck tunnel construction work continues on the East Front Plaza adjacent to and within the Senate triangular parking area, along Constitution Avenue NW, and along the east side of New Jersey Avenue NW between Constitution Avenue and C Street NW.

Right: Sitting 50 feet below the East Front Plaza on the House side of the CVC site, a crane lifts a group of steel rods that will be used in the assembly of cylindrical rebar cages. In all, 165 cages will be assembled and will serve as the "skeletons" for concrete caissons. The caissons, in turn, serve as footings for the 50-foot-high steel and concrete columns that will support the CVC structure. (Photo-8/8/03)



Next Week – Anticipated Work – 8/18/03 through 8/22/03

East Front Plaza Work

- Excavation and installation of tie-backs will continue throughout the CVC construction site. Installation of utilities and caissons will continue in the southwest quadrant of the site.

East Front (Inside the Capitol Building)

- Demolition of architectural and structural elements will continue in the basement and sub-basement within the East Front Extension.

Senate Side (Outside the CVC Construction Fence)

- CVC truck tunnel work will continue in all areas of the tunnel construction zone.

- If you have any questions about the Capitol Visitor Center Project, please contact **Tom Fontana**, CVC Project Communications Officer for the Architect of the Capitol, at (202) 228-1310, or by e-mail at: tfontana@ao.gov. You can read this document and previous editions on our web site at www.aoc.gov.



United States Capitol Visitor Center Weekly Construction Summary



Prepared by the Capitol Visitor Center Project Office, Architect of the Capitol, August 18, 2003

This Week – Ongoing Work – 8/18/03 through 8/22/03



Highlights:

- Excavation has reached its base depth of 50 feet at several locations throughout the project site and utility conduit installation continues in the southwest quadrant.
- Crews have begun installing concrete footings (caissons) in the southwest corner of the CVC site. Ten caissons have been completed and, eventually, 165 caissons will be poured to support all of the steel and concrete columns that will be erected on the site. Crews are expected to begin erecting 50-foot-high steel columns at the end of August.
- Approximately 140 trucks delivered a total of 1,250 cubic yards of concrete to the CVC truck tunnel construction zone on Saturday, August 16, to complete placement of a portion of the tunnel's base slab.
- Excavation has begun below the existing Russell Tunnel to clear the way for the CVC truck tunnel.

Seen here are three caisson trenches along the perimeter wall in the southwest quadrant of the CVC site.

East Front Plaza Work

- Site excavation continues throughout the project site and is now more than 70 percent complete.
- Installation of tie-backs continues on the north side of the site and more than 450 tie-backs, out of a total of 494, have been installed.
- The first steel columns will be erected at the end of August. Horizontal roof beams will be connected as the vertical columns are erected. A portion of the roof structure of the CVC will begin to take shape as early as September.
- The earth retention wall around the Congressional Auditorium has been completed and excavation has reached its base depth.

East Front Extension (Inside the Capitol)

- Demolition of architectural and structural elements continues in the basement and sub-basement within the East Front Extension. The work will clear the way for the transition zone between the CVC and the Capitol, which will include escalators, stairwells and two 25-passenger elevators.

Senate Side (Truck Tunnel Zone)

Truck Tunnel Construction:

- CVC truck tunnel construction work continues on the East Front Plaza adjacent to and within the Senate triangular parking area, along Constitution Avenue NW, and along the east side of New Jersey Avenue NW between Constitution Avenue and C Street NW.



Three back-hoes work concurrently in the southwest quadrant of the CVC site to clear the zone for placement of concrete caissons that will support 50-foot-high steel columns.



Within the East Front Extension, in an area just east of the Crypt that formerly housed the Capitol Historical Society gift shop, a worker uses a water hose to control dust in preparation for additional demolition that will occur in this zone.

Next Week – Anticipated Work – 8/25/03 through 8/29/03

East Front Plaza Work

- Excavation will continue throughout the CVC construction site. Installation of tie-backs will continue on the north side of the site. Installation of utilities and caissons will continue in the southwest quadrant of the site.

East Front (Inside the Capitol Building)

- Demolition of architectural and structural elements will continue in the basement, sub-basement and upper floors within the East Front Extension.

Senate Side (Outside the CVC Construction Fence)

- CVC truck tunnel work will continue in all areas of the tunnel construction zone.



A remote-controlled mini hoe-ram (top right of photo) continues demolition of structural elements below the East Front Steps. This zone will house the grand stairwell and escalators that will connect the CVC to the Capitol.

*If you have any questions about the Capitol Visitor Center Project, please contact **Tom Fontana**, CVC Project Communications Officer for the Architect of the Capitol, at (202) 228-1310, or by e-mail at: tfontana@aoc.gov. You can read this document and previous editions on our web site at www.aoc.gov.*



United States Capitol Visitor Center Weekly Construction Summary



Prepared by the Capitol Visitor Center Project Office, Architect of the Capitol, August 25, 2003

This Week – Ongoing Work – 8/25/03 through 8/29/03

Highlights:

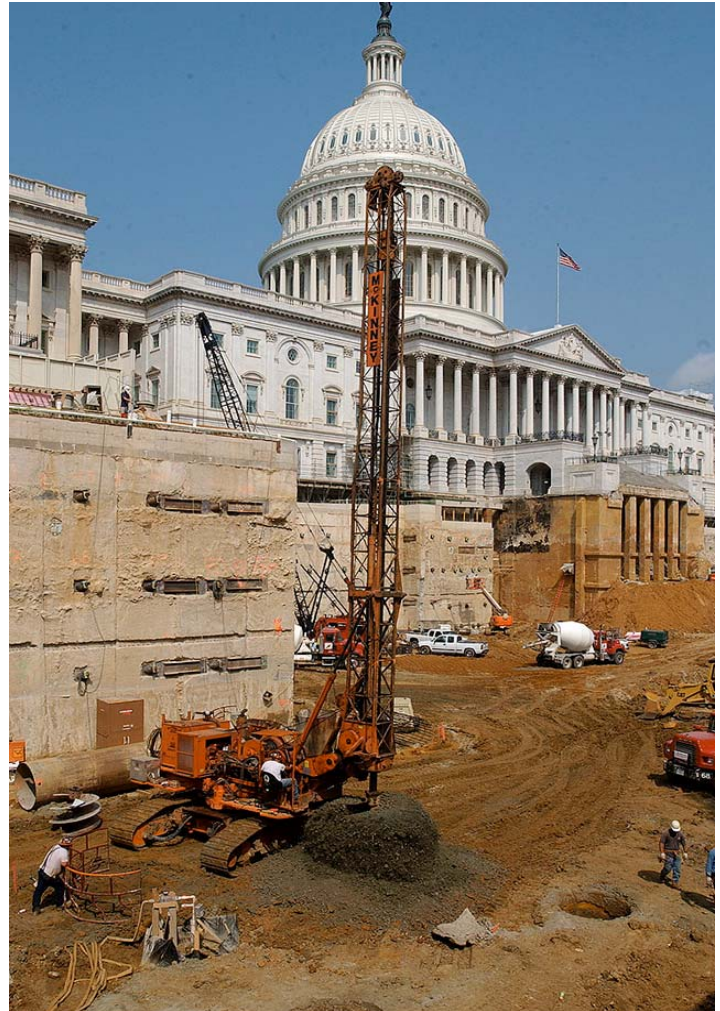
- Excavation has reached its base depth of 50 feet throughout most of the southern half of the site.
- Crews have installed approximately 30 caissons in the southwest quadrant. Eventually, 165 caissons will be poured to support all of the steel and concrete columns that will be erected on the CVC site.
- Excavation continues below the existing Russell Tunnel to clear the way for the CVC truck tunnel.

East Front Plaza Work

- Site excavation continues throughout the project site and is now 75 percent complete.
- Installation of tie-backs continues on the north side of the site. Only 25 tie-backs remain to be installed out of a total of 494.
- The first steel columns are expected to be erected the first week of September. Horizontal roof beams will be connected to the vertical columns as they are erected, so a portion of the roof structure of the CVC will begin to take shape by early October.

East Front Extension (Inside the Capitol)

- Demolition of architectural and structural elements continues on several levels within the East Front Extension. The work will clear the way for the transition zone between the CVC and the Capitol, which will include escalators, stairwells and two 25-passenger elevators.



A 60-inch-diameter auger is used to excavate 15-foot-deep holes that will house concrete caissons. The caissons will serve as footings for 50-foot-high steel columns.



Senate Side (Truck Tunnel Zone)

Truck Tunnel Construction:

- CVC truck tunnel construction work continues on the East Front Plaza adjacent to and within the Senate triangular parking area, along Constitution Avenue NW, and along the east side of New Jersey Avenue NW between Constitution Avenue and C Street NW.

Left: Workers continue to install miles of utility conduit in trenches that have been excavated below the base level of the CVC.

Next Week – Anticipated Work – 9/01/03 through 9/05/03

East Front Plaza Work

- Excavation will continue throughout the CVC construction site. Installation of tie-backs will continue on the north side of the site. Installation of utilities and caissons will continue in the southwest quadrant of the site.

East Front (Inside the Capitol Building)

- Demolition of architectural and structural elements will continue in the basement, sub-basement and upper floors within the East Front Extension.

Senate Side (Outside the CVC Construction Fence)

- CVC truck tunnel work will continue in all areas of the tunnel construction zone.

*If you have any questions about the Capitol Visitor Center Project, please contact **Tom Fontana**, CVC Project Communications Officer for the Architect of the Capitol, at (202) 228-1310, or by e-mail at: tfontana@ao.gov. You can read this document and previous editions on our web site at www.aoc.gov (click on the “Capitol Visitor Center” link in the project list).*



1.



2.



3.

Clockwise from top left: (1.) A 60-inch-diameter auger is used to excavate a hole 15 feet deep. (2.) A worker is then lowered to the bottom of the hole where he will test the soil density to determine its bearing capacity. (3.) Then, a cylindrical steel cage is lowered into the hole. The cage will provide structural reinforcement to the concrete that will be poured into the hole. (4.) After concrete is placed, large bolts are inserted in the concrete at the top of the caisson. The bolts will serve as anchor points for a 50-foot-high, 16-inch-square hollow steel column that will be erected on the caisson. The steel column will then be filled with concrete before it is capped.



4.



United States Capitol Visitor Center Weekly Construction Summary



Prepared by the Capitol Visitor Center Project Office, Architect of the Capitol, September 2, 2003

This Week – Ongoing Work – 9/1/03 through 9/5/03

Highlights:

- Excavation has reached its base depth of 50 feet throughout most of the southern half of the site.
- **Crews have installed 46 caissons in the southwest quadrant.** Eventually, 165 caissons will be poured to support all of the steel and concrete columns that will be erected on the CVC site.
- **Weather permitting, the first steel columns will be erected this week.**

East Front Plaza Work

- Between 500 and 600 truckloads of soil continue to be excavated and removed each day. Excavation is close to 80 percent complete as 400,000 cubic yards of soil have been removed.
- Installation of tie-backs continues along the north side of the Capitol. **Only 8 tie-backs remain to be installed out of a total of 494.**
- The first steel columns are expected to be erected this week. Horizontal roof beams will be connected to the vertical columns as they are erected and a portion of the roof structure of the CVC will begin to take shape by late September.
- Excavation continues below the existing Russell Tunnel to clear the way for the CVC truck tunnel.

East Front Extension (Inside the Capitol)

- Demolition of architectural and structural elements continues on several levels within the East Front Extension. The work will clear the way for the transition zone between the CVC and the Capitol, which will include escalators, stairwells and two 25-passenger elevators.

Senate Side (Truck Tunnel Zone)

Truck Tunnel Construction:

- CVC truck tunnel construction work continues on the East Front Plaza adjacent to and within the Senate triangular parking area, along Constitution Avenue NW, and along the east side of New Jersey Avenue NW between Constitution Avenue and C Street NW.

Next Week – Anticipated Work – 9/8/03 through 9/12/03

East Front Plaza Work

- Excavation will continue throughout the CVC construction site. Installation of utilities and caissons will continue in the southwest quadrant of the site.

East Front (Inside the Capitol Building)

- Demolition of architectural and structural elements will continue in the basement, sub-basement and upper floors within the East Front Extension.

Senate Side (Outside the CVC Construction Fence)

- CVC truck tunnel work will continue in all areas of the tunnel construction zone.

*If you have any questions about the Capitol Visitor Center Project, please contact **Tom Fontana**, CVC Project Communications Officer for the Architect of the Capitol, at (202) 228-1310, or by e-mail at: tfontana@ao.gov. You can read this document and previous editions on our web site at www.aoc.gov (click on the "Capitol Visitor Center" link in the project list).*

See the next page for aerial photos of the CVC project site before and after construction began.

One year ago...

This photo taken August 22, 2002, shows the East Front Plaza just before major excavation began. The Sequence 1 contractor, Centex Construction Company, is responsible for the CVC foundation and structure and had just completed situating trailers and equipment within the landscaped portions of the East Capitol Grounds. Most of the utility relocation had been completed and within a few days, back-hoes began peeling back the asphalt paving in the center of the Plaza. Tree protection fencing, clearly visible here, was erected early in 2002.



Right: Ground-level view of the East Front Plaza in September 2002.



One year later...

By August 14, 2003, crews had completed 2,100 linear feet of concrete perimeter wall and had installed close to 500 tie-backs. In addition, excavation crews have now removed more than 400,000 cubic yards of material (40,000 truckloads) from both the East Plaza and the north side of the Capitol, where the truck tunnel is being constructed (top right of photo). With excavation 80 percent complete, crews will begin erecting steel columns the first week of September. Personnel have been relocated out of the East Front Extension and interior demolition is continuing on all levels. Finally, the Sequence 2 contractor, Manhattan Construction Company, is now on site. The Sequence 2 work involves installation of mechanical, electrical and plumbing systems, building fit-out and all interior and exterior finishes.



Right: The East Front Plaza within the CVC footprint is now 50 feet below grade.





United States Capitol Visitor Center Weekly Construction Summary



Prepared by the Capitol Visitor Center Project Office, Architect of the Capitol, September 8, 2003

This Week – Ongoing Work – 9/8/03 through 9/12/03

Highlights:

- **14 steel columns have been erected** in the southwest quadrant of the site. More than 40 cross beams have been bolted to the columns to secure the columns to the roof line of the perimeter walls.
- **Crews have installed more than 50 caissons in the southwest quadrant.** Eventually, 165 caissons will be poured to support all of the steel and concrete columns that will be erected on the CVC site.
- Excavation has reached its base depth of 50 feet throughout most of the site.

East Front Plaza Work

- Crews will continue to erect steel columns in the southwest quadrant during the week. Steel erection work will occur in spurts over the next few months as areas are cleared for installation and as steel is delivered to the site.
- Between 300 and 400 truckloads of soil continue to be excavated and removed each day. Truck traffic has diminished slightly with excavation now more than 80 percent complete. More than 400,000 cubic yards of soil have been removed, but some areas need to be maintained at higher elevations to provide construction vehicle access to and from the site.
- Installation of tie-backs is expected to be completed this week.
- Excavation continues below the existing Russell Tunnel to clear the way for the CVC truck tunnel. Steel support beams are being installed below the tunnel slab to ensure its stability.

The first steel column for the CVC structure was raised and set into place in the southwest quadrant of the site on Friday, September 5. The event marks a turning point in the construction process as focus will shift from excavating the site down to building the structure up.



East Front Extension (Inside the Capitol)

- Demolition of architectural and structural elements continues on several levels within the East Front Extension. The work will clear the way for the transition zone between the CVC and the Capitol, which will include escalators, stairwells and two 25-passenger elevators.

Senate Side (Truck Tunnel Zone)

Truck Tunnel Construction:

- CVC truck tunnel construction work continues on the East Front Plaza adjacent to and within the Senate triangular parking area, along Constitution Avenue NW, and along the east side of New Jersey Avenue NW between Constitution Avenue and C Street NW.

Next Week – Anticipated Work – 9/15/03 through 9/19/03

East Front Plaza Work

- Crews will continue to erect steel columns in the southwest quadrant
- Excavation will continue throughout the northern half of the CVC construction site. Installation of utilities and caissons will continue in several locations.

East Front (Inside the Capitol Building)

- Demolition of architectural and structural elements will continue in the basement, sub-basement and upper floors within the East Front Extension.

Senate Side (Outside the CVC Construction Fence)

- CVC truck tunnel work will continue in all areas of the tunnel construction zone.



Above: An American flag is suspended from the first crossbeam to be used to construct the CVC roof structure. At right: Two workers roll up the flag after the crossbeam was secured to the first column that had been erected on the CVC site.



*If you have any questions about the Capitol Visitor Center Project, please contact **Tom Fontana**, CVC Project Communications Officer for the Architect of the Capitol, at (202) 228-1310, or by e-mail at: tfontana@aoc.gov. You can read this document and previous editions on our web site at www.aoc.gov (click on the "Capitol Visitor Center" link in the project list).*



United States Capitol Visitor Center Weekly Construction Summary



Prepared by the Capitol Visitor Center Project Office, Architect of the Capitol

September 15, 2003

This Week – Ongoing Work – 9/15/03 through 9/19/03

Highlights:

- Crews have begun to weld corrugated steel roof decking to steel crossbeams in the southwest quadrant of the CVC site.
- 26 steel columns have been erected in the southwest quadrant of the site and have been secured to the roof line of the perimeter walls.
- Crews have installed more than 60 caissons in the southern half of the site. Eventually, 165 caissons will be poured to support all of the steel and concrete columns that will be erected on the CVC site.
- Portions of a large tower crane will begin to arrive on site early next week. The crane will be situated within the CVC site just east of the original House wing.
- Excavation has reached its base depth of 50 feet throughout most of the site.



Man of steel: A worker guides a steel crossbeam into position in the southwest quadrant of the CVC site.



The steel structure of the CVC begins to take shape in the southwest quadrant of the site in the area to be occupied by House expansion space.

East Front Plaza Work

- Crews will continue to erect steel columns in the southern half of the CVC site during the week. Steel erection work will occur in spurts over the next few months as areas are cleared for installation and as steel is delivered to the site.
- Between 300 and 400 truckloads of soil continue to be excavated and removed each day.
- Excavation continues below the existing Russell Tunnel to clear the way for the CVC truck tunnel. Steel support beams are being installed below the tunnel slab to ensure its stability.



Elevated 50 feet aboveground, a welder secures a steel crossbeam support clip to the perimeter wall in the southwest quadrant of the site.

East Front Extension (Inside the Capitol)

- Demolition of architectural and structural elements continues on several levels within the East Front Extension. The work will clear the way for the transition zone between the CVC and the Capitol, which will include escalators, stairwells and two 25-passenger elevators.

Senate Side (Truck Tunnel Zone)

Truck Tunnel Construction:

- CVC truck tunnel construction work continues on the East Front Plaza adjacent to and within the Senate triangular parking area, along Constitution Avenue NW, and along the east side of New Jersey Avenue NW between Constitution Avenue and C Street NW.

Next Week – Anticipated Work – 9/22/03 through 9/26/03

East Front Plaza Work

- Crews will continue to erect steel columns in the southwest quadrant
- Excavation will continue throughout the northern half of the CVC construction site. Installation of utilities and caissons will continue in several locations.

East Front (Inside the Capitol Building)

- Demolition of architectural and structural elements will continue in the basement, sub-basement and upper floors within the East Front Extension.

Senate Side (Outside the CVC Construction Fence)

- CVC truck tunnel work will continue in all areas of the tunnel construction zone.



Demolition crews continue to remove tons of debris from the East Front. Here, workers pile concrete rubble in an area that formerly housed the Capitol Historical Society gift shop.

If you have any questions about the Capitol Visitor Center Project, please contact **Tom Fontana**, CVC Project Communications Officer for the Architect of the Capitol, at (202) 228-1310, or by e-mail at: tfontana@ao.gov. You can read this document and previous editions on our web site at www.aoc.gov (click on the "Capitol Visitor Center" link in the project list).



United States Capitol Visitor Center Weekly Construction Summary



Prepared by the Capitol Visitor Center Project Office, Architect of the Capitol

September 22, 2003



With the exception of just a few pools of water, the effects of Hurricane Isabel are scarcely noticeable on the CVC construction site. This photo, taken September 22, 2003, shows the steel framing of the CVC as it progresses northward. Steel roof decking is already in place above most of the southernmost portion of the site and steel framing is now visible adjacent to the Capitol façade. The framing for the first of the CVC's four smaller skylights is also visible in the center of the photo. Two larger skylights above the Great Hall will be framed later this fall.

This Week – Ongoing Work – 9/22/03 through 9/26/03

Highlights:

- The CVC site suffered no significant damages as a result of Hurricane Isabel. Some minor damages that did occur, primarily to the perimeter fence, have been repaired and pumps were used throughout the site to keep water accumulations to a minimum. Excavation and other activities are again moving at full speed.
- Steel framing is now visible adjacent to the Capitol façade and the first of four smaller skylights has been framed.
- Crews will continue to erect columns and secure crossbeams in the southwest quadrant. Corrugated steel roof decking will be installed as framing continues. Approximately 40 steel columns have been erected.
- Crews have installed more than 70 caissons in the southern half of the site. Eventually, 165 caissons will be poured to support all of the steel and concrete columns that will be erected on the CVC site.
- Portions of a large tower crane will begin to arrive on site late this week. The crane will be situated within the CVC site just east of the original House wing.

East Front Plaza Work

- Crews will continue to erect steel columns in the southern half of the CVC site during the week. Steel erection work will occur in spurts over the next few months as areas are cleared for installation and as steel is delivered to the site.
- Between 300 and 400 truckloads of soil continue to be excavated and removed each day.
- Excavation continues below the existing Russell Tunnel to clear the way for the CVC truck tunnel. Steel support beams are being installed below the tunnel slab to ensure its stability.



A worker secures a steel crossbeam to a column in the southwest quadrant of the CVC site.

East Front Extension (Inside the Capitol)

- Demolition of structural elements continues on several levels within the East Front Extension. The work will clear the way for the transition zone between the CVC and the Capitol, which will include escalators, stairwells and two 25-passenger elevators.

Senate Side (Truck Tunnel Zone)

Truck Tunnel Construction:

- CVC truck tunnel construction work continues on the East Front Plaza adjacent to and within the Senate triangular parking area, along Constitution Avenue NW, and along the east side of New Jersey Avenue NW between Constitution Avenue and C Street NW. Excavation is approximately 70 percent complete in this zone.

Next Week – Anticipated Work – 9/29/03 through 10/03/03

East Front Plaza Work

- Crews will continue to erect steel columns and crossbeams, and install roof decking in the southern half of the site.
- Excavation will continue throughout the northern half of the CVC construction site. Installation of caissons will continue in the central portion of the site.



- A large tower crane will be assembled on site in the southwest quadrant.

East Front (Inside the Capitol Building)

- Demolition of architectural and structural elements will continue in the basement, sub-basement and upper floors within the East Front Extension.

Senate Side

- CVC truck tunnel work will continue in all areas of the tunnel construction zone.

In anticipation of Hurricane Isabel, some additional welding was done to secure steel roof decking to the main structure.

*If you have any questions about the Capitol Visitor Center Project, please contact **Tom Fontana**, CVC Project Communications Officer for the Architect of the Capitol, at (202) 228-1310, or by e-mail at: tfontana@ao.gov. You can read this document and previous editions on our web site at www.aoc.gov (click on the "Capitol Visitor Center" link in the project list).*



United States Capitol Visitor Center Weekly Construction Summary



Prepared by the Capitol Visitor Center Project Office, Architect of the Capitol

September 29, 2003



Set against the early morning sky on Monday, September 29, 2003, a tower crane rises 220-feet from the southwest quadrant of the CVC construction site. The crane will be the Capitol Dome's neighbor for at least six months and will be joined by a second tower crane on the north side of the site later this fall. The cranes will be used to place concrete and move materials throughout the project area.

This Week – Ongoing Work – 9/29/03 through 10/3/03

Highlights:

- A tower crane (photo above) was assembled and erected this past weekend and is now operational in the southwest quadrant of the CVC site. The crane will be used to place concrete for the roof deck and the three interior floor slabs. Some portions of the roof deck will remain open to allow for the interior placement of concrete and other construction materials. A second tower crane will be erected on the north side of the site later this fall.
- Crews will continue to erect columns and secure crossbeams in the southwest quadrant. Corrugated steel roof decking will be installed as framing continues. Steel framing is expected to reach the Rotunda Steps by early next week. Approximately 40 steel columns have been erected thus far.
- Crews have installed more than 70 caissons in the southern half of the site. Eventually, 165 caissons will be poured to support all of the steel and concrete columns that will be erected on the CVC site.
- Approximately 300 truckloads of material are being removed each day. Excavation work will diminish over the next few weeks as crews reach the base level throughout the site.

East Front Plaza Work

- Crews will continue to erect steel columns in the southern half of the CVC site during the week. Steel erection work will occur in spurts over the next few months as areas are cleared for installation and as steel is delivered to the site.
- Between 200 and 300 truckloads of soil continue to be excavated and removed each day.
- Excavation continues below the existing Russell Tunnel to clear the way for the CVC truck tunnel.

East Front Extension (Inside the Capitol)

- Demolition of structural elements continues on several levels within the East Front Extension. The work will clear the way for the transition zone between the CVC and the Capitol, which will include escalators, stairwells and two 25-passenger elevators.

Senate Side (Truck Tunnel Zone)

Truck Tunnel Construction:

- CVC truck tunnel construction work continues on the East Front Plaza adjacent to and within the Senate triangular parking area, along Constitution Avenue NW, and along the east side of New Jersey Avenue NW between Constitution Avenue and C Street NW. Excavation is approximately 75 percent complete in this zone.



Nearly 200 feet above ground, a worker connects two sections of a new tower crane erected on the CVC site on Saturday, September 27, 2003.

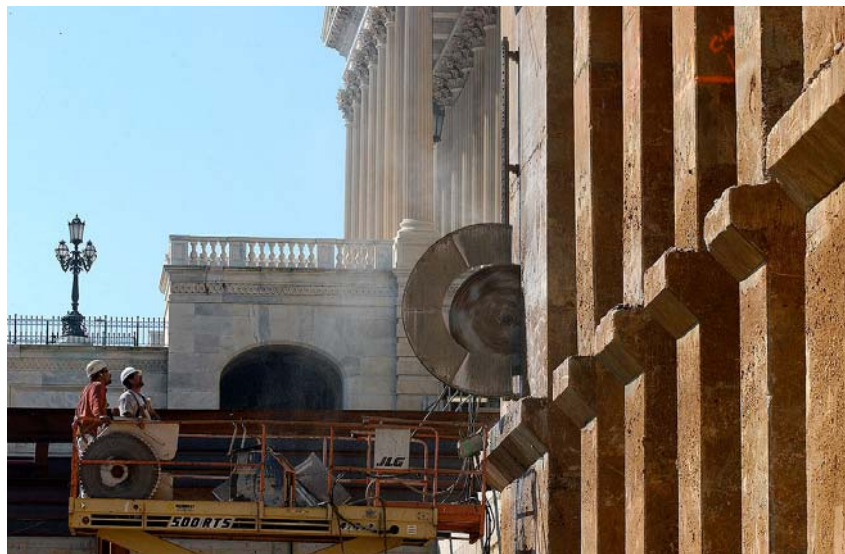
Next Week – Anticipated Work – 10/06/03 through 10/10/03

East Front Plaza Work

- Crews will continue to erect steel columns and crossbeams, and install roof decking in the southern half of the site.
- Excavation will continue throughout the northern half of the CVC construction site. Installation of caissons will continue in the north and central portions of the site.

East Front (Inside the Capitol Building)

- Demolition of structural elements will continue on all levels within the East Front Extension.



Senate Side

- CVC truck tunnel work will continue in all areas of the tunnel construction zone.

Workers use a 4-foot-diameter saw to cut slots into the concrete below the East Front Rotunda steps. Structural steel will be inserted into the slots to support the Rotunda steps and, thereby, allow a demolition crew to remove the existing center concrete columns. Once the columns are removed, a grand staircase will be constructed that will connect the CVC to the Capitol.



United States Capitol Visitor Center Weekly Construction Summary



Prepared by the Capitol Visitor Center Project Office, Architect of the Capitol

October 6, 2003



An aerial view of the CVC project site taken October 1, 2003, shows the structural steel and roof decking over a portion of the southwest quadrant of the project area. Steel erection crews will continue to move northward across the site with installation of roof decking following close behind. A 220-foot-high tower crane at left will transport materials and concrete throughout the southern half of the CVC site.

This Week – Ongoing Work – 10/06/03 through 10/10/03

East Front Plaza Highlights:

- Crews will continue to erect columns and secure crossbeams in the southwest quadrant. Corrugated steel roof decking will be installed as framing continues. Approximately 50 steel columns have been erected thus far and steel framing has now reached the Rotunda Steps.
- Crews have installed more than 90 caissons. Eventually, 165 caissons will be poured to support all of the steel and concrete columns that will be erected on the CVC site.
- Approximately 300 truckloads of material are being removed each day. More than 500,000 cubic yards (50,000 truckloads) of material have been removed from the site since excavation began August 2002.

East Front Extension (Inside the Capitol)

- Demolition of structural elements continues on several levels within the East Front Extension. The work will clear the way for the transition zone between the CVC and the Capitol, which will include escalators, stairwells and two 25-passenger elevators.

Senate Side (Truck Tunnel Zone) Truck Tunnel Construction:

- CVC truck tunnel construction work continues on the East Front Plaza adjacent to and within the Senate triangular parking area, along Constitution Avenue NW, and along the east side of New Jersey Avenue NW between Constitution Avenue and C Street NW. Excavation is approximately 75 percent complete in this zone.



During a site walk October 3, 2003, Architect of the Capitol, Alan Hantman, points out CVC project activities to House staff from the Office of the Speaker, the Office of the Clerk, the House Sergeant at Arms, the House Administration Committee and the House Appropriations Committee. The group is seen here below the roof decking and amid the steel columns in the southwest quadrant of the CVC site.

Next Week – Anticipated Work – 10/13/03 through 10/17/03

East Front Plaza Work

- Crews will continue to erect steel columns and crossbeams, and install roof decking in the southern half of the site.
- Excavation will continue throughout the northern half of the CVC construction site. Installation of caissons will continue in the north and central portions of the site.

East Front (Inside the Capitol Building)

- Demolition of structural elements will continue on all levels within the East Front Extension.



Senate Side

- CVC truck tunnel work will continue in all areas of the tunnel construction zone.

In the southwest quadrant of the CVC site, a worker welds one of thousands of steel studs through steel roof decking and into the structural steel below. Approximately 3 inches of the stud will remain above the deck to help provide structural support to a concrete roof slab that will be placed on the deck in late October.

*If you have any questions about the Capitol Visitor Center Project, please contact **Tom Fontana**, CVC Project Communications Officer for the Architect of the Capitol, at (202) 228-1310, or by e-mail at: tfontana@ao.gov. You can read this document and previous editions on our web site at www.aoc.gov (click on the "Capitol Visitor Center" link in the project list).*



United States Capitol Visitor Center Weekly Construction Summary



Prepared by the Capitol Visitor Center Project Office, Architect of the Capitol

October 14, 2003



Speaker J. Dennis Hastert, left, is briefed on CVC construction activities by Alan Hantman, Architect of the Capitol, during a site visit on Thursday, October 9, 2003. Steel framework, which can be seen in the background, has been erected throughout most of the southern half of the site and columns can now be seen adjacent to the Rotunda Steps.

This Week – Ongoing Work – 10/13/03 through 10/17/03

East Front Plaza Highlights:

- Crews will continue to erect columns and secure crossbeams in the southern half of the CVC site. Corrugated steel roof decking will be installed as framing continues. Steel framing has now been erected adjacent to the Rotunda Steps. Steel rebar cages are now being assembled on the roof deck in the southwest quadrant in preparation for the first of two concrete slabs that will be placed on the roof.
- Crews have installed more than 100 caissons. Eventually, 165 caissons will be poured to support all of the steel and concrete columns that will be erected on the CVC site.
- More than 500,000 cubic yards (50,000 truckloads) of material have been removed from the site since excavation began August 2002. Only 20,000 cubic yards of material to be excavated will remain to provide access for vehicles.

East Front Extension (Inside the Capitol)

- Demolition of structural elements continues on several levels within the East Front. The work will clear the way for the transition zone between the CVC and the Capitol, which will include escalators, stairwells and two 25-passenger elevators.

Senate Side (Truck Tunnel Zone)

Truck Tunnel Construction:

- CVC truck tunnel construction work continues on the East Front Plaza adjacent to and within the Senate triangular parking area, along Constitution Avenue NW, and along the east side of New Jersey Avenue NW between Constitution Avenue and C Street NW. Excavation is approximately 75 percent complete in this zone.

Next Week – 10/20/03 - 10/24/03

East Front Plaza Work

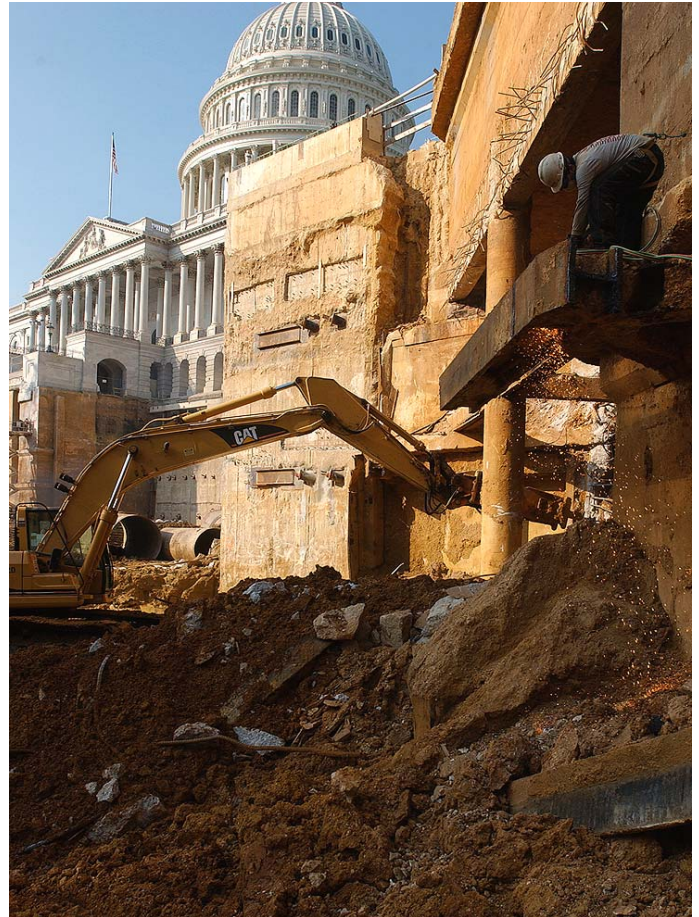
- Crews will continue to erect steel columns and crossbeams, and install roof decking in the southern half of the site.
- Excavation will continue throughout the northern half of the CVC construction site. Installation of caissons will continue in the north and central portions of the site.

East Front (Inside the Capitol Building)

- Demolition of structural elements will continue on all levels within the East Front Extension.

Senate Side

- CVC truck tunnel work will continue in all areas of the tunnel construction zone.



Workers continue demolition and excavation on the north side of the CVC site to clear the way for the new truck tunnel entrance.



Steel workers guide a crossbeam into place near the face of the Capitol between the House Steps and Rotunda Steps. Steel roof decking will be installed over the next several weeks and then covered with a 13-inch concrete slab. When completed, the roof deck will have a thickness of 27 inches.

If you have any questions about the Capitol Visitor Center Project, please contact **Tom Fontana**, CVC Project Communications Officer for the Architect of the Capitol, at (202) 228-1310, or by e-mail at: tfontana@ao.gov. You can read this document and previous editions on our web site at www.aoc.gov (click on the "Capitol Visitor Center" link in the project list).



United States Capitol Visitor Center Weekly Construction Summary



Prepared by the Capitol Visitor Center Project Office, Architect of the Capitol

October 20, 2003



A worker positions steel rebar on the roof deck of the CVC in the southwest quadrant of the project area. The rebar will serve as structural reinforcement for the first of two concrete slabs that will be placed on the roof deck. The green epoxy coating on the rebar prevents rusting.

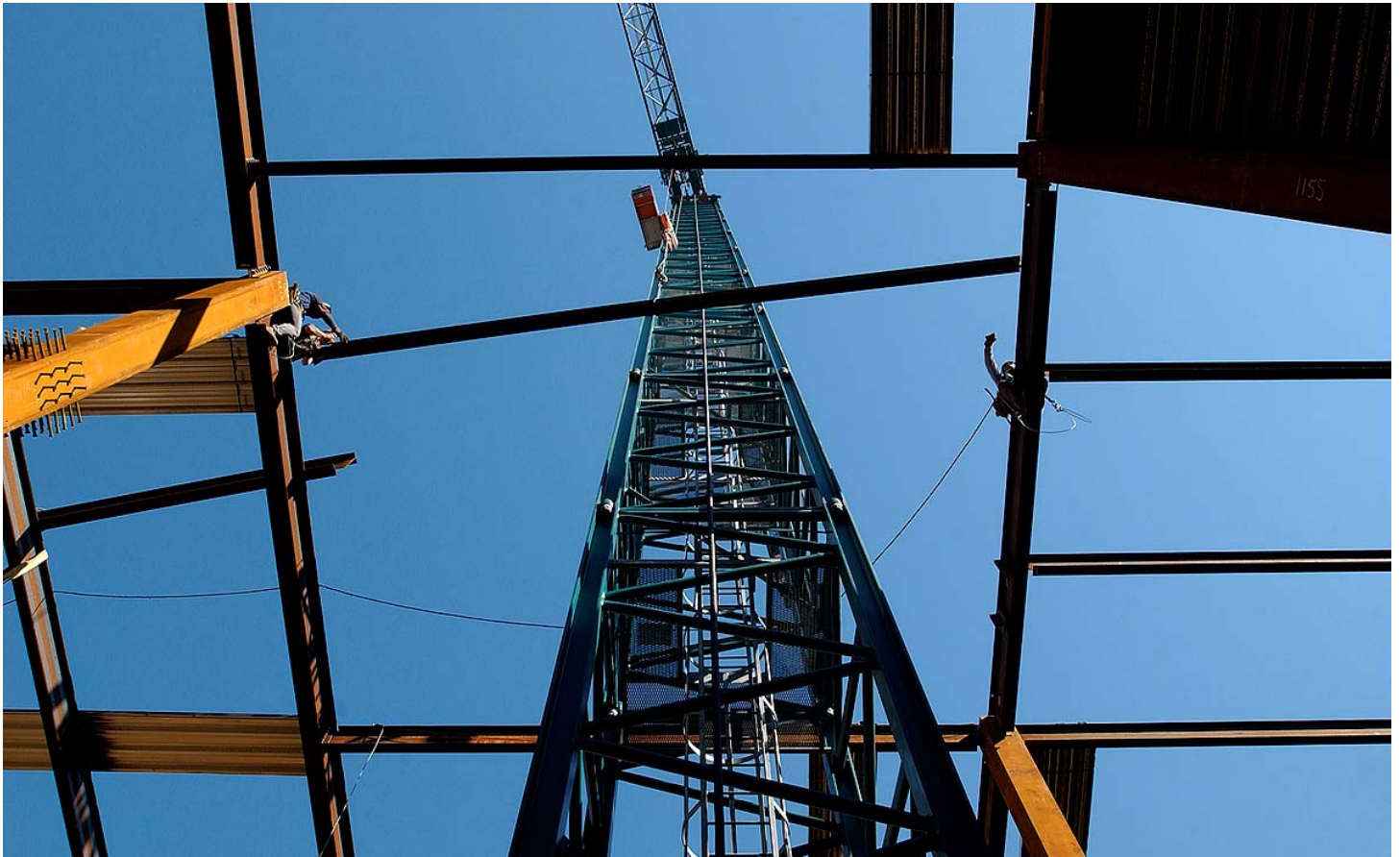
This Week – Ongoing Work – 10/20/03 through 10/24/03

East Front Plaza Highlights:

- Crews will continue to erect columns and secure crossbeams in the southern half of the CVC site. Corrugated steel roof decking will be installed as framing continues. Steel framing has now been erected adjacent to the Rotunda Steps. Steel rebar cages continue to be assembled on the roof deck in the southwest quadrant in preparation for the first of two concrete slabs that will be placed on the roof. Weather permitting, the first concrete slab will be placed at the end of this week.
- Crews will continue to install concrete caissons in the northern half of the site. More than 100 caissons, out of a total of 165, have been installed thus far. A caisson is needed to support each column that is erected on the site.
- More than 500,000 cubic yards (50,000 truckloads) of material have been removed from the site since excavation began August 2002. Only 20,000 cubic yards of material to be excavated will remain to provide access for vehicles.
- The dirt ramp in the center of the site will be shifted northward this weekend to clear the way for placement of caissons in the center of the site.

East Front Extension (Inside the Capitol)

- Demolition of structural elements continues on several levels within the East Front. The work will clear the way for the transition zone between the CVC and the Capitol, which will include escalators, stairwells and two 25-passenger elevators.



Working near a 220-foot-high tower crane in the southern half of the CVC site, steel works guide a crossbeam into place.

Senate Side (Truck Tunnel Zone)

Truck Tunnel Construction:

- CVC truck tunnel construction work continues on the East Front Plaza adjacent to and within the Senate triangular parking area, along Constitution Avenue NW, and along the east side of New Jersey Avenue NW between Constitution Avenue and C Street NW. Excavation is approximately 80 percent complete in this zone.

Next Week – 10/27/03 - 10/31/03

East Front Plaza Work

- Crews will continue to erect steel columns and crossbeams, install roof decking and lay rebar atop the decking in the southern half of the site.
- Installation of caissons will continue in the north and central portions of the site.
- Installation of utilities and storm drainage pipes will continue throughout the site.

East Front (Inside the Capitol Building)

- Demolition of structural elements will continue on all levels within the East Front Extension and in the Carriageway below the center steps.

Senate Side

- CVC truck tunnel work will continue in all areas of the tunnel construction zone.

*If you have any questions about the Capitol Visitor Center Project, please contact **Tom Fontana**, CVC Project Communications Officer for the Architect of the Capitol, at (202) 228-1310, or by e-mail at: tfontana@aac.gov. You can read this document and previous editions on our web site at www.aoc.gov (click on the "Capitol Visitor Center" link in the project list).*



In the center of the CVC site, a worker welds a steel clip at the top of a 50-foot-high steel column. A dirt access ramp, visible in the background, provides vehicle access to the site.



United States Capitol Visitor Center Weekly Construction Summary



Prepared by the Capitol Visitor Center Project Office, Architect of the Capitol

October 27, 2003



On Friday, October 24, 2003, a crew completed the first concrete placement on a portion of the CVC roof deck in the southwest quadrant of the project site. Concrete is being generated within the CVC construction perimeter thereby keeping up to 30 cement trucks off the roads each day.

This Week – Ongoing Work – 10/27/03 through 10/31/03

East Front Plaza Highlights:

- Crews completed the first concrete placement on the CVC roof deck last week (photo above) and will continue placing concrete later this week as steel rebar is assembled on the corrugate steel roof decking.
- Steel crews will continue to erect columns and secure crossbeams in the central portion of the CVC site.
- Crews will continue to drill and install concrete caissons in the northern half of the site. More than 100 caissons, out of a total of 165, have been installed thus far. A caisson is needed to support each column that is erected on the site.
- Utility installation continues throughout the site.
- More than 500,000 cubic yards (50,000 truckloads) of material have been removed from the site since excavation began August 2002. Only 20,000 cubic yards of material to be excavated will remain to provide access for vehicles.

East Front Extension (Inside the Capitol)

- Demolition of structural elements continues on several levels within the East Front. The work will clear the way for the transition zone between the CVC and the Capitol, which will include escalators, stairwells and two 25-passenger elevators.



Looking east from atop the House Steps last Friday, October 24, 2003, a crew is seen leveling the first concrete slab placed on the CVC roof deck. Inset: Once concrete sets a while, a sit-on trowel machine that rides on two rotating blades is used to make the concrete surface smooth and level.

Senate Side (Truck Tunnel Zone)

Truck Tunnel Construction:

- CVC truck tunnel construction work continues on the East Front Plaza adjacent to and within the Senate triangular parking area, along Constitution Avenue NW, and along the east side of New Jersey Avenue NW between Constitution Avenue and C Street NW. Excavation is approximately 80 percent complete in this zone.

Next Week – 11/03/03 - 11/07/03

East Front Plaza Work

- Crews will continue erect steel columns and crossbeams, install roof decking, lay rebar and place concrete atop the decking in the southern half of the site.
- Installation of caissons will continue in the north and central portions of the site.
- Installation of utilities and storm drainage pipes will continue throughout the site.

East Front (Inside the Capitol Building)

- Demolition of structural elements will continue on all levels within the East Front Extension and in the Carriageway below the center steps.

Senate Side

- CVC truck tunnel work will continue in all areas of the tunnel construction zone.



Standing 55 feet below grade in the center of the CVC site, (from left) Rep. John Mica (R-FL), Rep. Vernon Ehlers (R-MI), Architect of the Capitol Alan Hantman, and Rep. John Larson (D-CT) observe demolition activities below the East Front Center Steps during a site visit October 21, 2003.

If you have any questions about the Capitol Visitor Center Project, please contact **Tom Fontana**, CVC Project Communications Officer for the Architect of the Capitol, at (202) 228-1310, or by e-mail at: tfontana@ao.gov. You can read this document and previous editions on our web site at www.aoc.gov (click on the "Capitol Visitor Center" link in the project list).



United States Capitol Visitor Center Weekly Construction Summary



Prepared by the Capitol Visitor Center Project Office, Architect of the Capitol

November 3, 2003



Under cover: Below the CVC roof deck just east of the House Steps, workers lay a gravel bed for the first concrete placement of the floor slab.

This Week – Ongoing Work – 11/03/03 through 11/07/03

East Front Plaza Highlights:

- Crews completed the second concrete placement on the CVC roof deck last week and will continue placing concrete later this week as steel rebar is assembled on the corrugated steel roof decking.
- Concrete has also been placed for a portion of the floor slab in the southwest quadrant.
- Steel crews will continue to erect columns and secure crossbeams in the central portion of the CVC site. Close to 90 percent of the steel erected thus far has been covered with steel decking.
- Crews will continue to drill and install concrete caissons in the central and northern portions of the site.
- More than 500,000 cubic yards (50,000 truckloads) of material have been removed from the site since excavation began August 2002. Only 20,000 cubic yards of material to be excavated will remain to provide access for vehicles.

East Front Extension (Inside the Capitol)

- Demolition of structural elements continues on several levels within the East Front. The work will clear the way for the transition zone between the CVC and the Capitol, which will include escalators, stairwells and two 25-passenger elevators.

Senate Side (Truck Tunnel Zone)

Truck Tunnel Construction:

- CVC truck tunnel construction work continues on the East Front Plaza adjacent to and within the Senate triangular parking area, along Constitution Avenue NW, and along the east side of New Jersey Avenue NW between Constitution Avenue and C Street NW. Excavation is approximately 85 percent complete in this zone.

Tunnel vision: Inside the new truck tunnel, a waterproofing membrane can be seen suspended along the tunnel walls. Formwork will be erected in front of the membrane and concrete walls will be constructed.



Next Week – 11/10/03 - 11/14/03

East Front Plaza Work

- Crews will continue to erect steel columns and crossbeams, install roof decking, lay rebar and place concrete atop the decking in the southern half of the site.
- Installation of caissons will continue in the north and central portions of the site.
- Installation of utilities and storm drainage pipes will continue throughout the site.



East Front (Inside the Capitol Building)

- Demolition of structural elements will continue on all levels within the East Front Extension and in the Carriageway below the center steps.

Senate Side

- CVC truck tunnel work will continue in all areas of the tunnel construction zone.

A steel worker guides a 30-ton crossbeam in place in the southern half of the CVC site.

If you have any questions about the Capitol Visitor Center Project, please contact **Tom Fontana**, CVC Project Communications Officer for the Architect of the Capitol, at (202) 228-1310, or by e-mail at: tfontana@ao.gov. You can read this document and previous editions on our web site at www.ao.gov (click on the "Capitol Visitor Center" link in the project list).



United States Capitol Visitor Center Weekly Construction Summary



Prepared by the Capitol Visitor Center Project Office, Architect of the Capitol

November 10, 2003



Taken during a misty morning on Thursday, November 6, 2003, this aerial view of the southern half of the CVC project site shows the progress of steel erection, now visible in front of the East Front Center Steps. Also visible at the eastern-most edge of the steel framing near the center of the photo is the large opening for one of two grand skylights that will allow natural light to fill the Great Hall while providing visitors views of the Capitol Dome. Two smaller skylight openings, now surrounded by steel decking, can be seen closer to the Capitol building.

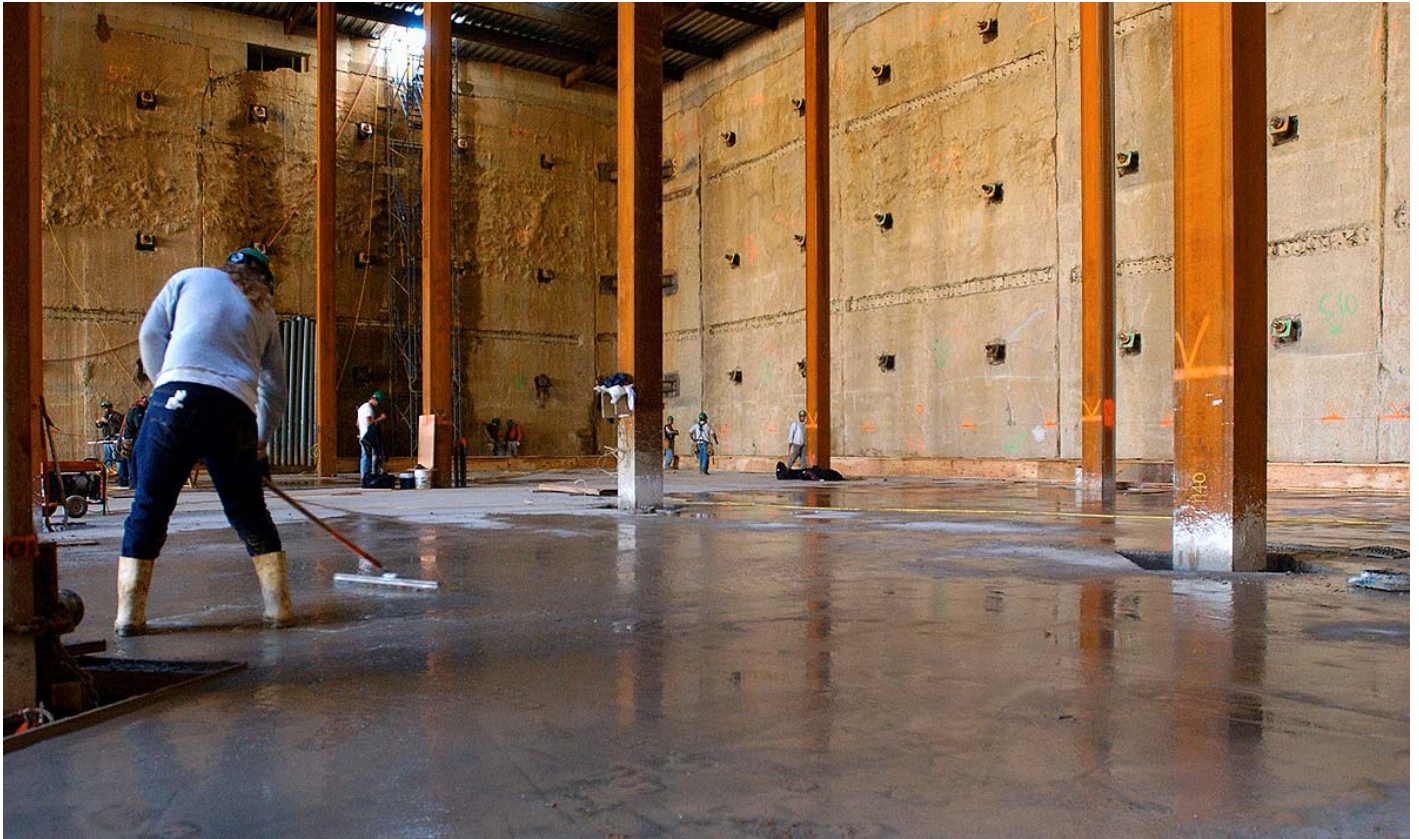
This Week – Ongoing Work – 11/10/03 through 11/14/03

East Front Plaza Highlights:

- Crews are expected to complete the fourth concrete placement on the CVC roof deck.
- The second concrete placement will occur for the floor slab in the southwest quadrant (*see photo on page 2*).
- Steel crews will continue to erect columns and secure crossbeams in the central portion of the CVC site.
- Crews will continue to drill and install concrete caissons in the northern half of the site.
- Close to 500,000 cubic yards (50,000 truckloads) of material have been removed from the site since excavation began August 2002.

East Front Extension (Inside the Capitol)

- Demolition of structural elements continues on several levels within the East Front. The work will clear the way for the transition zone between the CVC and the Capitol, which will include escalators, stairwells and two 25-passenger elevators.



On Friday, November 7, crews completed the first concrete placement for the floor slab in the southwest quadrant of the CVC site. The horizontal notches in the walls indicate the locations of the floor slabs for the middle and upper levels of the House expansion space.

Senate Side (Truck Tunnel Zone)

Truck Tunnel Construction:

- CVC truck tunnel construction work continues on the East Front Plaza adjacent to and within the Senate triangular parking area, along Constitution Avenue NW, and along the east side of New Jersey Avenue NW between Constitution Avenue and C Street NW. Excavation is approximately 85 percent complete in this zone.
- Crews have begun assembling steel rebar across the tunnel opening in preparation of a concrete roof deck.

Next Week – 11/17/03 - 11/21/03

East Front Plaza Work

- Crews will continue to erect steel columns and crossbeams, install roof decking, lay rebar and place concrete atop the decking and on grade in the southern half of the site.
- Installation of caissons will continue in the northern half of the site.
- Installation of utilities and storm drainage pipes will continue throughout the site.

East Front (Inside the Capitol Building)

- Demolition of structural elements will continue on all levels within the East Front Extension and in the Carriageway below the center steps.

Senate Side

- CVC truck tunnel work will continue in all areas of the tunnel construction zone.

*If you have any questions about the Capitol Visitor Center Project, please contact **Tom Fontana**, CVC Project Communications Officer for the Architect of the Capitol, at (202) 228-1310, or by e-mail at: tfontana@ao.gov. You can read this document and previous editions on our web site at www.aoc.gov (click on the "Capitol Visitor Center" link in the project list).*



United States Capitol Visitor Center Weekly Construction Summary



Prepared by the Capitol Visitor Center Project Office, Architect of the Capitol

November 17, 2003



Sneak preview: Steel already frames one of two grand skylights over an area that will become the Great Hall of the CVC. The skylights will allow natural light to illuminate the interior space while providing visitors a view of the Capitol Dome.

This Week – Ongoing Work – 11/17/03 through 11/21/03

East Front Plaza Highlights:

- Crews have completed concrete placements on the roof deck over the entire area above the House expansion space, south of the tower crane. Weather permitting additional concrete placements will occur on the roof deck throughout the week.
- Crews will continue to place concrete for the floor slab in the southwest quadrant.
- Steel erection will not occur this week as crews complete installation of caissons.
- Crews will continue to drill and install concrete caissons in the northern half of the site and, weather permitting, are expected to complete the last of the CVC's 186 caissons by the end of the week.
- Close to 500,000 cubic yards (50,000 truckloads) of material have been removed from the site since excavation began August 2002.

East Front Extension (Inside the Capitol)

- Demolition of structural elements continues on several levels within the East Front. The work is clearing the way for the transition zone between the CVC and the Capitol, which will include escalators, stairwells and two 25-passenger elevators.

Senate Side (Truck Tunnel Zone)

Truck Tunnel Construction:

- A drill rig is now being assembled and will be situated near the southernmost end of the construction zone near the Senate drive-thru canopy. Parking will not be impacted.
- CVC truck tunnel construction work continues on the East Front Plaza adjacent to and within the Senate triangular parking area, along Constitution Avenue NW, and along the east side of New Jersey Avenue NW between Constitution Avenue and C Street NW. Excavation is approximately 90 percent complete in this zone and concrete placement is ongoing.
- Crews continue assembling steel rebar across the tunnel opening in preparation of a concrete roof deck.

Next Week – 11/24/03 - 11/28/03

East Front Plaza Work

- Crews will resume erecting steel columns and crossbeams. They will continue to install roof decking, lay rebar and place concrete atop the decking and on grade in the southern half of the site.
- Depending on the weather this week, some finishing work related to the installation of caissons may still be required.
- Installation of utilities and storm drainage pipes will continue throughout the site.

East Front (Inside the Capitol Building)

- Demolition of structural elements will continue on all levels within the East Front Extension and in the Carriageway below the center steps.

Senate Side

- CVC truck tunnel work will continue in all areas of the tunnel construction zone.
- During the upcoming recess, a crane is expected to be situated near the southeastern-most end of the construction zone near the Senate drive-thru canopy. This crane will impact several parking spaces and will require the realignment of the drive lane to the Senate drive-thru canopy. A detailed construction notice will be disseminated once a work-plan is finalized.



Workers guide a cylindrical steel rebar cage into a caisson trench. A caisson is a concrete footer that serves as the foundation for each steel or concrete column that is erected on site. The last of 186 caissons may be completed by the end of this week.



Last month, on the north side of the Capitol, workers inside the new truck tunnel laid steel rebar along the base of the tunnel to prepare it for placement of a concrete road bed.

*If you have any questions about the Capitol Visitor Center Project, please contact **Tom Fontana**, CVC Project Communications Officer for the Architect of the Capitol, at (202) 228-1310, or by e-mail at: tfontana@aac.gov. You can read this document and previous editions on our web site at www.aoc.gov (click on the "Capitol Visitor Center" link in the project list).*



United States Capitol Visitor Center Weekly Construction Summary



Prepared by the Capitol Visitor Center Project Office, Architect of the Capitol

November 24, 2003



From high atop the Capitol Dome (foreground), this view of the southern half of the CVC site shows roof decking covering most of steel framework that has been erected thus far. Steel erection continues this week now that all 186 caissons have been installed.

This Week – Ongoing Work – 11/24/03 through 11/28/03



East Front Plaza Highlights:

- Crews have completed concrete placements on the roof deck over the entire area above the House expansion space, south of the tower crane. Additional concrete placements will occur on the roof deck throughout the week.
- With caisson work now complete, the two large drill rigs that dug the caisson trenches have left the site clearing the way for steel erection throughout the northern half of the site.
- A tower crane similar to the one on the southern half of the site will be erected in the northwest quadrant by the end of this week.
- Crews continue to assemble the formwork for the lower of two floor slabs inside the CVC (see photo on back page).
- Utility crews continue to install the subgrade utilities throughout the site.

Milestone: On Thursday, Nov. 20, workers lowered the steel skeleton for the last of 186 caissons that were installed on the site. Each caisson serves as a concrete footer for the steel and concrete columns that will hold up the CVC structure.

East Front Extension (Inside the Capitol)

- During the upcoming recess, crews will begin demolishing and saw-cutting floor slabs to clear the way for elevator shafts, stairwells, and mechanical systems.
- Demolition of structural elements continues on several levels within the East Front.

Senate Side (Truck Tunnel Zone)

Truck Tunnel Construction:

- A drill rig is now being assembled and will be situated near the southernmost end of the construction zone near the Senate drive-thru canopy. No parking spaces will be impacted, but the pedestrian path along the jersey barriers will be shifted slightly southward.
- Crews will place a concrete roof slab over a portion of the tunnel directly below Constitution Avenue NW.
- Crews continue assembling steel rebar across the tunnel opening in preparation of a concrete roof deck.

Next Week – 12/01/03 - 12/05/03

East Front Plaza Work

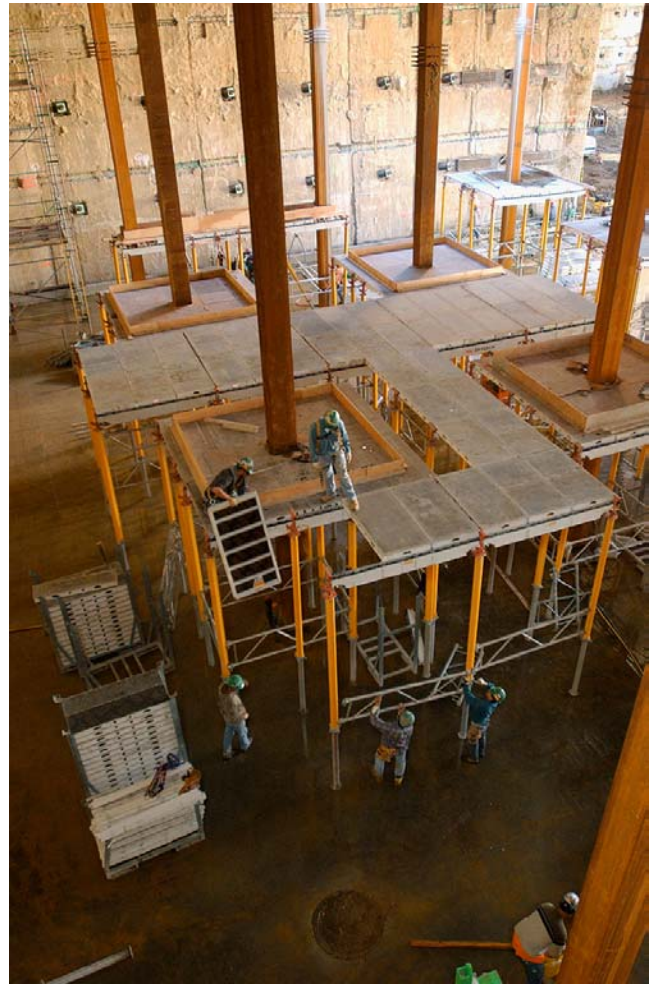
- Crews will continue erecting steel columns and crossbeams in the northern half of the site. They will continue to install roof decking, lay rebar and place concrete on the decking and on grade in the southern half of the site.
- Installation of utilities and storm drain pipes will continue throughout the site.
- The tower crane in the northwest quadrant is expected to be fully operational.

East Front (Inside the Capitol Building)

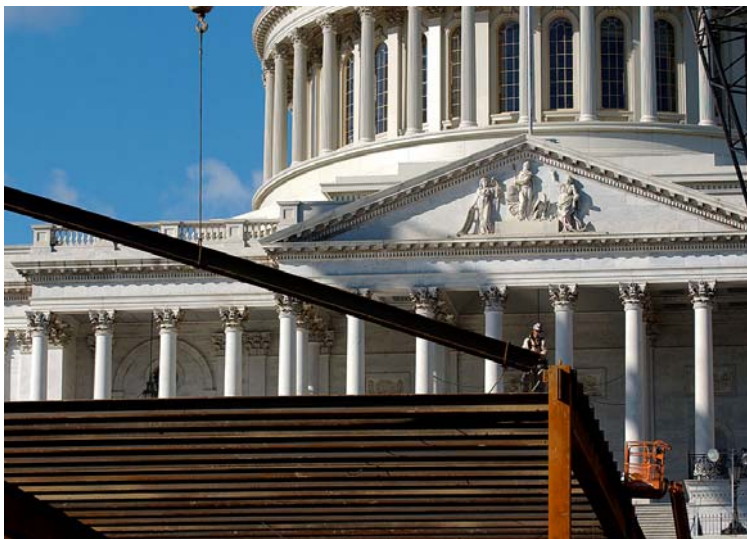
- Demolition of structural elements will continue on all levels within the East Front Extension and in the Carriageway below the center steps.

Senate Side

- CVC truck tunnel work will continue in all areas of the tunnel construction zone.
- Weather permitting, a drill rig at the southernmost end of the tunnel construction zone is expected to complete its work and any affected parking spaces may be returned by the following Monday.



With the slab-on-grade completed in the southwest quadrant, workers began last week to assemble the scaffolded formwork for the lower of two intermediate floor slabs inside the CVC.



A steel worker guides a beam in place in front of the East Front center steps. Steel erection will continue throughout the northern half of the site and is expected to be completed by late January 2004.

If you have any questions about the Capitol Visitor Center Project, please contact Tom Fontana, CVC project communications officer, at (202) 228-1310, or by e-mail at tfontana@oc.gov. You can read this document and previous editions on the CVC web site at www.oc.gov (click on the Capitol Visitor Center link in the project list).



United States Capitol Visitor Center Weekly Construction Summary



Prepared by the Capitol Visitor Center Project Office, Architect of the Capitol

December 1, 2003



A view of the CVC site from the East Front Center Steps on Monday, December 1, shows a second tower crane (left of photo) that was erected this past weekend. The crane will be used to transport concrete, steel and other materials throughout the northern half of the site.

This Week – Ongoing Work – 12/01/03 through 12/05/03

East Front Plaza Highlights:

- Crews have completed concrete placements on the roof deck over the entire area above the House expansion space, south of the south tower crane. Additional concrete placements will occur on the roof deck throughout the week.
- With caisson work now complete, the two large drill rigs that dug the caisson trenches have left the site clearing the way for steel erection throughout the northern half of the site. Steel erection will resume this week.
- A tower crane similar to the one on the southern half of the site has been erected in the northwest quadrant.
- Crews continue to assemble the formwork for the lower of two floor slabs inside the CVC.
- Utility crews continue to install the subgrade utilities throughout the site.

East Front Extension (Inside the Capitol)

- During the recess, crews will begin demolishing and saw-cutting floor slabs to clear the way for elevator shafts, stairwells, and mechanical systems.
- Demolition of structural elements continues on several levels within the East Front.

Senate Side (Truck Tunnel Zone)

Truck Tunnel Construction:

- A drill rig will be operating near the southwestern most end of the tunnel construction zone near the Senate drive-thru canopy. No parking spaces have been impacted, but the pedestrian path along the jersey barriers is being shifted slightly southward.
- A large yellow drill rig is expected to complete its work by the end of the week and be removed from the site.
- Crews have placed a concrete roof slab over a portion of the tunnel directly below Constitution Avenue NW.
- Crews continue assembling steel rebar across the tunnel opening in preparation of a concrete roof deck.



A crew working on the new truck tunnel builds the formwork for the roof of the tunnel in preparation of a concrete pour. Eventually, the area above the tunnel roof will be backfilled.

Next Week – 12/08/03 - 12/12/03

East Front Plaza Work

- Crews will continue erecting steel columns and crossbeams in the northern half of the site. They will continue to install roof decking, lay rebar and place concrete on the decking and on grade in the southern half of the site.
- Installation of utilities, mechanical trenches, footings and storm drain pipes will continue throughout the site.
- Scaffolding for the first-level floor slab will continue to be erected. Concrete placements will continue to occur for the first-level floor slab.



East Front (Inside the Capitol Building)

- Demolition of structural elements will continue on all levels within the East Front Extension and in the Carriageway below the center steps (see photo at left).

Senate Side

- CVC truck tunnel work will continue in all areas of the tunnel construction zone.
- Weather permitting, a drill rig at the southernmost end of the tunnel construction zone is expected to have complete its work and be removed from the site.

Demolition continues below the East Front Center Steps to clear the way for a grand stairwell and escalators within the transition zone between the CVC and the Capitol.

If you have any questions about the Capitol Visitor Center Project, please contact Tom Fontana, CVC project communications officer, at (202) 228-1310, or by e-mail at tfontana@aoc.gov. You can read this document and previous editions on the CVC web site at www.aoc.gov (click on the Capitol Visitor Center link in the project list).

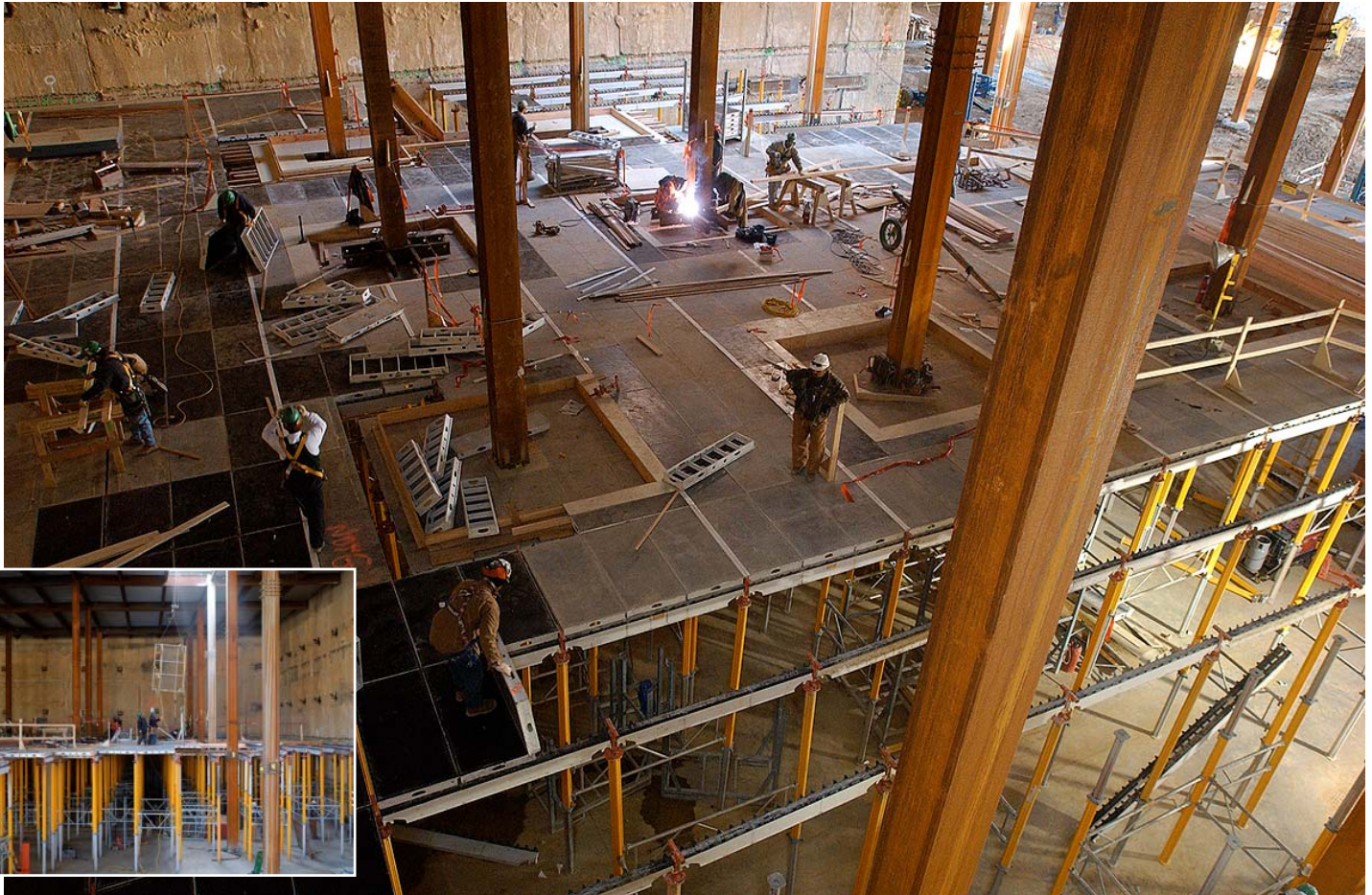


United States Capitol Visitor Center Weekly Construction Summary



Prepared by the Capitol Visitor Center Project Office, Architect of the Capitol

December 8, 2003



Workers assemble formwork for the first-level concrete floor slab in the southwest quadrant of the CVC. Inset: A side view of the same area shows materials being lowered through a temporary opening in the roof deck. A concrete pour for the first-level floor slab may occur this week.

This Week – Ongoing Work – 12/08/03 through 12/12/03

East Front Plaza Highlights:

- Steel crews will continue to erect steel in the northern half of the site.
- Crews have completed concrete placements on the roof deck over the entire area above the House expansion space, south of the south tower crane. Additional concrete placements will occur on the roof deck up to the East Front Center Steps.
- A tower crane similar to the one on the southern half of the site has been erected in the northwest quadrant and is now fully operational.
- Crews continue to assemble the formwork for the lower of two floor slabs above the slab on grade inside the CVC.
- Utility crews continue to install the subgrade utilities throughout the site.

Concrete continues to be placed on the CVC roof deck on the south side of the site. Here, concrete is being placed adjacent to the original House wing.





Demolition crews continue saw-cutting through walls to clear the way for new elevators, escalators and mechanical rooms in the East Front.

East Front Extension (Inside the Capitol)

- During the recess, crews will continue demolishing and saw-cutting floor slabs and walls to clear the way for elevator shafts, stairwells and new mechanical systems (see photo above).

Senate Side (Truck Tunnel Zone)

Truck Tunnel Construction:

- Crews continue assembling rebar and placing concrete roof slabs over portions of the truck tunnel.

Next Week – 12/15/03 - 12/19/03

East Front Plaza Work

- Crews will continue erecting steel columns and crossbeams in the northern half of the site. They will continue to install roof decking, lay rebar and place concrete on the decking and on grade in the southern half of the site.
- Installation of utilities, mechanical trenches, footings and storm drain pipes will continue throughout the site.
- Scaffolding for the first-level floor slab will continue to be erected. Concrete placements will continue to occur for the first-level floor slab.

East Front Extension (Inside the Capitol)

- Demolition of structural elements will continue on all levels within the East Front Extension and in the Carriageway below the East Front center steps.

Senate Side (Truck Tunnel Zone)

- CVC truck tunnel work will continue in all areas of the tunnel construction zone.

If you have any questions about the Capitol Visitor Center Project, please contact Tom Fontana, CVC project communications officer, at (202) 228-1310, or by e-mail at fontana@aac.gov. You can read this document and previous editions on the CVC web site at www.aac.gov (click on the Capitol Visitor Center link in the project list).



United States Capitol Visitor Center Weekly Construction Summary



Prepared by the Capitol Visitor Center Project Office, Architect of the Capitol

December 15, 2003



A view from the top of a tower crane on the north side of the CVC site shows the progress of steel erection, which now can be seen adjacent to the original north wing of the Capitol. Steel decking covers most of the southern half of the CVC roof structure and concrete slabs on the roof deck now support hundreds of tons of building materials that will be used to construct the interior slabs and walls of the visitor center.

This Week – Ongoing Work – 12/15/03 through 12/19/03

East Front Plaza Highlights:

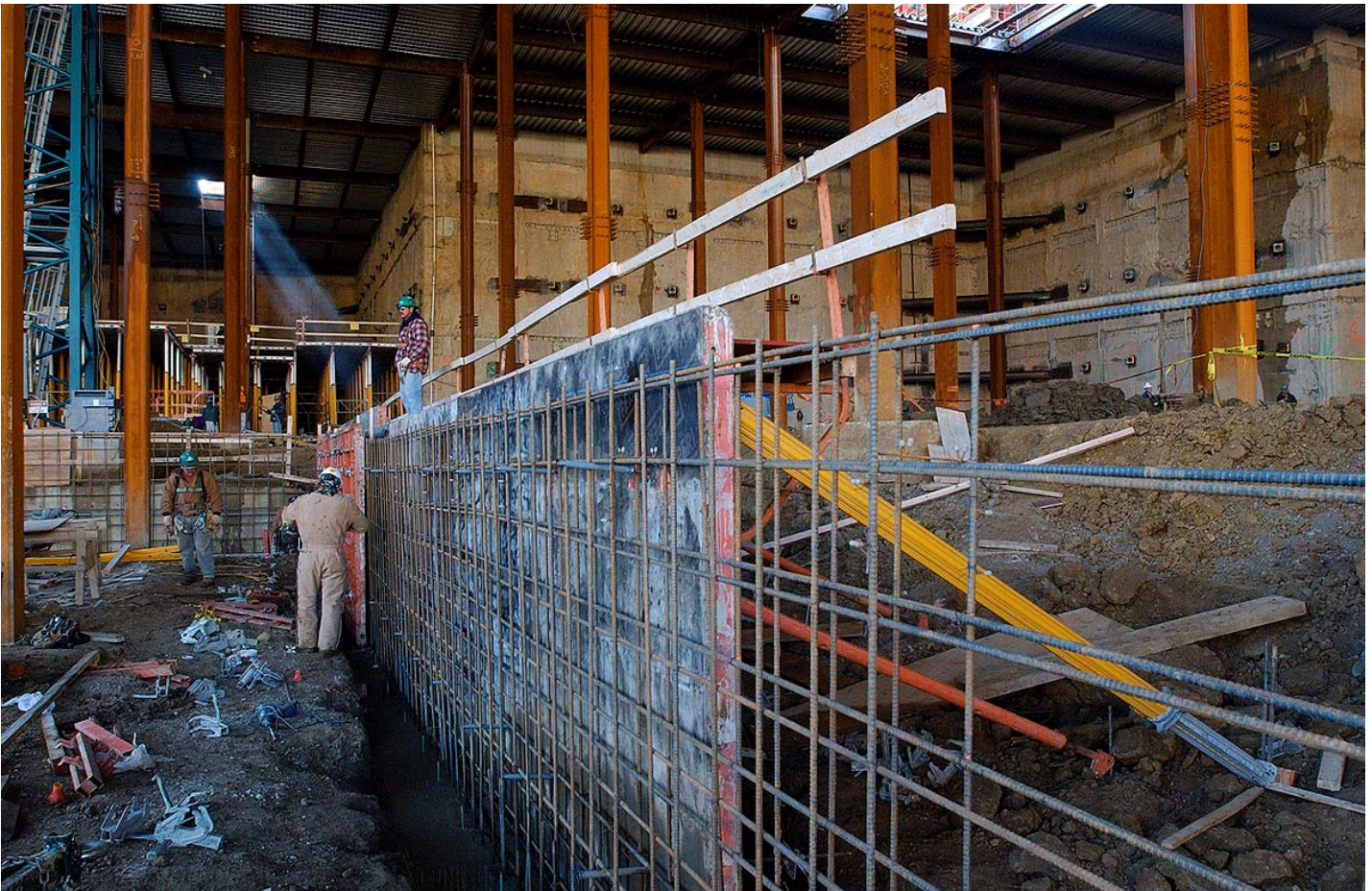
- Steel crews will continue to erect steel in the northern half of the site.
- Crews have completed concrete placements on the roof deck over the entire area above the House expansion space, south of the south tower crane. Additional concrete placements will occur on the roof deck up to the East Front Center Steps.
- Crews continue to assemble the formwork for the lower of two floor slabs above the slab on grade inside the CVC. Concrete placements for the lower level slab will occur during the week.
- Utility crews continue to excavate and install utilities throughout the site.

East Front Extension (Inside the Capitol)

- During the recess, crews will continue demolishing and saw-cutting floor slabs and walls to clear the way for elevator shafts, stairwells and new mechanical systems.

On Friday, Dec. 12, a CVC construction crew assembled a portion of the rebar for the first of two concrete roof slabs that will be placed on the deck near the East Front Center Steps.





Sequence 1 construction crews are now busy assembling formwork for mechanical rooms, utilities, and other service-level facilities in the CVC.

Senate Side (Truck Tunnel Zone)

Truck Tunnel Construction:

- Crews continue assembling rebar and placing concrete roof slabs over portions of the truck tunnel.

Next Week – 12/22/03 - 12/26/03

East Front Plaza Work

- Crews will continue erecting steel columns and crossbeams in the northern half of the site. They will continue to install roof decking, lay rebar and place concrete on the decking and on grade in the southern half of the site.
- Installation of utilities, mechanical trenches, footings and storm drain pipes will continue throughout the site.
- Scaffolding for the first-level floor slab will continue to be erected and concrete placements will occur inside the CVC.

East Front Extension (Inside the Capitol)

- Demolition of structural elements will continue on all levels within the East Front Extension and in the Carriageway below the East Front center steps.

Senate Side (Truck Tunnel Zone)

- CVC truck tunnel work will continue in all areas of the tunnel construction zone.



In the basement level of the East Front Extension, CVC construction crews often work within extremely tight conditions that require workers to excavate the old-fashioned way—with shovels and buckets.



United States Capitol Visitor Center Weekly Construction Summary



Prepared by the Capitol Visitor Center Project Office, Architect of the Capitol

December 22, 2003



This aerial view of the CVC project site from Dec. 17, 2003, shows the progress of steel erection, which is now visible adjacent to the Senate Steps (center right). Also visible is the placement of concrete on the roof deck in front of the Center Steps and the staging of hundreds of tons of construction materials on the roof deck near the House Steps. Most of the steel for the CVC structure will be erected by the end of January.

This Week – Ongoing Work – 12/22/03 through 12/26/03

East Front Plaza Highlights:

- Steel crews continue to erect steel in the northern half of the site.
- Crews have completed concrete placements on the roof deck over the entire area above the House expansion space. Additional concrete placements have also been completed in front of the Center Steps.
- Crews continue to assemble the formwork for the lower of two floor slabs above the slab on grade inside the CVC and concrete placements for the lower level slab will occur during the next two weeks.
- Crews continue to excavate and install utilities throughout the site.



East Front Extension (Inside the Capitol)

- During the winter recess, crews will continue demolishing and saw-cutting floor slabs and walls to clear the way for elevator shafts, stairwells and new mechanical systems.

Architect of the Capitol, Alan Hantman, described construction activities to Senate Majority Leader Frist, during a CVC site walk on Dec. 19, 2003.

Senate Side (Truck Tunnel Zone)

Truck Tunnel Construction:

- Crews continue assembling rebar and placing concrete roof slabs over portions of the truck tunnel.

Next Week – 12/29/03 - 1/02/04

East Front Plaza Work

- Crews will continue erecting steel columns and crossbeams in the northern half of the site. They will continue to install roof decking, lay rebar and place concrete on the decking and on grade in the southern half of the site.
- Installation of utilities, mechanical trenches, footings and storm drain pipes will continue throughout the project site.
- Scaffolding for the first-level floor slab will continue to be erected and concrete placements will occur inside the CVC in the southwest quadrant.

East Front Extension (Inside the Capitol)

- Demolition of structural elements will continue on all levels within the East Front Extension and in the Carriageway below the East Front Center Steps.

Senate Side (Truck Tunnel Zone)

- CVC truck tunnel work will continue in all areas of the tunnel construction zone.



AOC photographer Chuck Badal has taken thousands of photographs of CVC construction activities since work began late in 2001. Chuck is responsible for the majority of photographs that have appeared in the CVC Weekly Construction Summary and on the CVC web site.



Far left: New York Times photographer, Doug Mills, visited the CVC site on Dec. 22, 2003, to capture current project activities. According to Mills, a CVC photo caption story is expected to appear in the Times before the end of December.

Left: Below the Statue of Freedom's watchful gaze, steel workers guide a crossbeam into place on the north side of the CVC construction site on Dec. 22, 2003.



United States Capitol Visitor Center Weekly Construction Summary



Prepared by the Capitol Visitor Center Project Office, Architect of the Capitol

December 29, 2003



This view of the CVC project site from Dec. 29, 2003, shows the progress of steel erection and placement of roof decking, which is now visible adjacent to the Senate Steps. The opening for one of the two large skylights over the Great Hall is clearly visible in foreground. A concrete deck can also be seen on the south and east sides of the East Front Center Steps. More concrete pours will occur on the roof deck this week.

This Week – Ongoing Work – 12/29/03 through 1/02/04

East Front Plaza Highlights:

- Steel crews continue to erect steel in the northern half of the site.
- Crews have completed concrete placements on the roof deck over the entire area above the House expansion space. Additional concrete placements have also been completed in front of the Center Steps.
- Crews continue to assemble the formwork for the lower of two floor slabs above the slab on grade inside the CVC and concrete placements for the lower level slab will occur during the next two weeks.
- Crews continue to excavate and install utilities throughout the site.

East Front Extension (Inside the Capitol)

- During the winter recess, crews will continue demolishing and saw-cutting floor slabs and walls to clear the way for elevator shafts, stairwells and new mechanical systems.

Demolition crews continue to remove tons of debris from the East Front Extension to clear the way for the transition zone between the CVC and the Capitol.





A beam of sunlight penetrates a temporary opening in the CVC roof deck in the southwest quadrant of the site where crews are busy assembling the formwork for the lower-level floor slab. Concrete placements for the floor slab are expected to occur this week.

Senate Side (Truck Tunnel Zone)

Truck Tunnel Construction:

- Crews continue assembling rebar and placing concrete roof slabs over portions of the truck tunnel.

Next Week – 1/05/04 - 1/09/04

East Front Plaza Work

- Crews will continue erecting steel columns and crossbeams in the northern half of the site. They will continue to install roof decking, lay rebar and place concrete on the decking and on grade in the southern half of the site.
- Installation of utilities, mechanical trenches, footings and storm drain pipes will continue throughout the project site.
- Scaffolding for the first-level floor slab will continue to be erected and concrete placements will occur inside the CVC in the southwest quadrant.



A crew guides the placement of concrete on a portion of the CVC roof deck in the center of the site.

East Front Extension (Inside the Capitol)

- Demolition of structural elements will continue on all levels within the East Front Extension and in the Carriageway below the East Front Center Steps.

Senate Side (Truck Tunnel Zone)

- CVC truck tunnel work will continue in all areas of the tunnel construction zone.